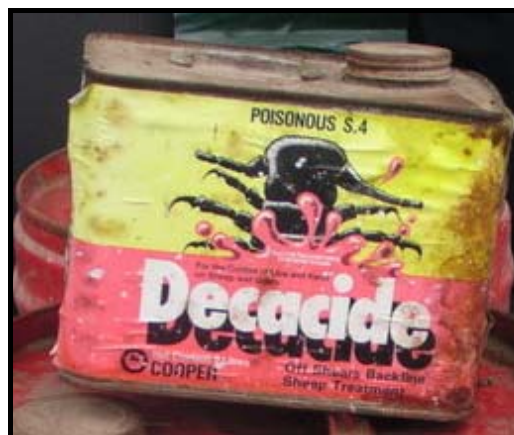
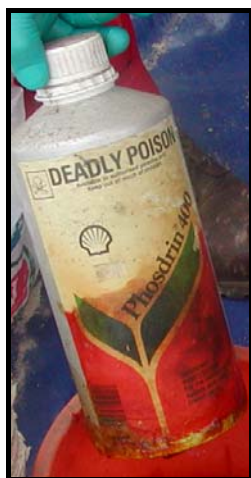


Zero Hazardous Waste



Zero Hazardous Waste Directory of Contacts



Find what you need, when you need it.

QUICK REFERENCE CONTACT LIST

HAZARDOUS WASTE	CONTACT	PHONE
<u>Asbestos</u>	Victoria Flats Landfill: Landfill Manager	☎03 445 1860
	Canterbury Heating Services Ltd	☎03 388 5981
<u>Appliances</u>	Wakatipu Recycling Centre	☎03 451 0105
	Wanaka Wastebusters	☎03 443 8606
	Upper Clutha Messenger	☎03 443 7804
	Frankton Transfer Station	☎03 451 0106
	Wanaka Transfer Station	☎03 443 6063
	QLDC Waste Exchange	✉ http://www.recirculate.org.nz
	Donate NZ	✉ http://www.donatenz.co.nz
	Trade Me	✉ http://www.trademe.co.nz
<u>Batteries</u>	Wakatipu Recycling Centre	☎03 451 0105
	Frankton Transfer Station	☎03 451 0106
	Wanaka Wastebusters	☎03 443 8606
	Wanaka Transfer Station	☎03 443 6063
<u>Car bodies</u>	Alexandra Auto Parts	☎0800 253 9971
	Man and A Van Transport, Queenstown	☎027 530 6312
	Wanaka Transfer Station	☎03 443 6063
<u>Chemicals</u>	<u>Agrichemicals</u>	Otago Regional Council: Lyndon Taylor ☎03 474 0827
	<u>Household Chemicals</u>	Council Services Team ☎03 441 0499
<u>Containers Contaminated with Hazardous Waste</u>		
	Frankton Transfer Station	☎03 451 0106
	Wanaka Transfer Station	☎03 443 6063
	Agrecovery Rural Recycling	☎0800 247 326
<u>Computers, Monitors, Office /IT Equipment</u>		
<u>Recycling</u>	Wakatipu Recycling Centre	☎03 451 0105
	Wanaka Wastebusters	☎03 443 8686
	QLDC Waste Exchange	✉ http://www.recirculate.org.nz
	Donate NZ	✉ http://www.donatenz.co.nz
	Trade Me	✉ http://www.trademe.co.nz
<u>Disposal</u>	Upper Clutha Messenger	☎03 443 7804
	Council Customer Services Team	☎03 441 0499
	E-day Collection Information	✉ http://www.eday.org.nz
<u>Explosives</u>	Queenstown police station	☎03 441 1600
	Arrowtown police station	☎03 442 1274
	Wanaka police station	☎03 443 7272
<u>Fire Extinguishers</u>	Refer to extinguisher for contact details	
<u>Fuels & Oils</u>		
<u>Used Oils (engine, machinery lubricating and hydraulic oil)</u>	Wakatipu Recycling Centre	☎03 451 0105
	Wanaka Wastebusters	☎03 443 8606
<u>Diesel, petrol, kerosene and mixed oils</u>	Council Customer Services Team	☎03 441 0499

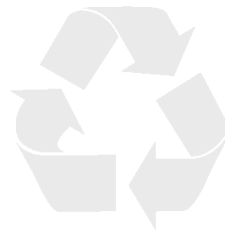
HAZARDOUS WASTE	CONTACT	PHONE
<u>Gas Cylinders/LPG Bottles</u>	Frankton Transfer Station	☎03 451 0106
	Wanaka Transfer Station	☎03 443 6063
	Wanaka Wastebusters	☎03 443 8606
<u>Lighting Products: Fluorescent lights & lights containing mercury</u>		
	Wakatipu Recycling Centre	☎03 451 0105
	Wanaka Wastebusters	☎03 443 8606
	Interwaste	☎03 479 0045
<u>Mobile Phones</u>		
Telecom	Big Bear Computers	☎03 441 6000
	Noel Leeming	☎03 450 9170
Vodafone	O'Connells Shopping Centre	☎03 442 4934
	Spencer House Mall, Wanaka	☎03 443 2086
Recycling	Wakatipu Recycling Centre	☎03 451 0120
	Wanaka Wastebusters	☎03 443 8606
<u>Paint</u>		
(see Hazardous Waste Directory for types of paints and paint products accepted)	Frankton Transfer Station	☎03 451 0106
	Wanaka Wastebusters	☎03 443 8606
	Placemakers Queenstown	☎03 450 9000
	Placemakers Wanaka	☎03 443 0080
	Resene Colourshop	☎03 442 4152
<u>Pharmaceuticals</u>		
	Unichem Wilkinsons Pharmacy	☎03 4427313
	Summerfields Pharmacy	☎03 442 3467
	Aspiring Pharmacy	☎03 443 7986
<u>Pollution Response</u>		
	24 Hour Pollution Hotline	☎0800 800 033
	Queenstown Lakes District Council	☎03 441 0499
	Wanaka Lakes District Council	☎03 443 0024
	Otago Regional Council	☎03 474 0827
<u>Printer Cartridges</u>		
	Wakatipu Recycling Centre	☎03 451 0105
	Wanaka Wastebusters	☎03 443 8606
	Cartridge World	☎03 442 6878
	Paper Plus Queenstown	☎03 442 5296
	Paper Plus Wanaka	☎03 443 7532
	Toner Recycling Centre	☎0800 180 160
<u>Tyres</u>		
	Frankton Transfer Station	☎03 451 0106
	Wanaka Wastebusters	☎03 443 8606
	Tyre Track: see website	✉ http://www.mta.org.nz/?id=796
	Victoria Flats Landfill (large quantities)	☎03 4451860
<u>Whiteware</u>		
Recycling	Wakatipu Recycling Centre	☎03 451 0105
	Wanaka Wastebusters	☎03 443 8686
	QLDC Waste Exchange	✉ http://www.recirculate.org.nz
	Donate NZ	✉ http://www.donatenz.co.nz
Reuse/Resale	Trade Me	✉ http://www.trademe.co.nz
	Upper Clutha Messenger	☎03 443 7804
Disposal	Frankton Transfer Station	☎03 451 0106
	Wanaka Transfer Station	☎03 443 6063
	H & J Electrical (Queenstown)	☎03 442 3858

CONTENTS PAGE

This section of the Zero Hazardous Waste Toolkit provides a quick reference for all local service providers, contacts and hazardous waste related contractors.

Hazardous wastes are listed in material groups, which are alphabetically ordered.

QUICK REFERENCE CONTACT LIST	1
1.1 ASBESTOS	2
1.2 AUTOMOTIVE	3
1.3 BATTERIES.....	4
1.4 CHEMICALS.....	5
1.5 CONTAINERS CONTAMINATED WITH HAZARDOUS WASTE	8
1.6 ELECTRICAL.....	9
1.7 EXPLOSIVES	13
1.8 FIRE EXTINGUISHERS	14
1.9 FUELS & USED OILS	15
1.10 GAS CYLINDERS.....	16
1.11 LIGHTING PRODUCTS.....	17
1.12 PHARMACEUTICALS	18
1.13 PAINT & SOLVENTS.....	19
1.14 POLLUTION RESPONSE	21



Did you know?

Since 2003 more than 378 tonnes of agrichemicals have been collected and removed from New Zealand's rural area.

Approximately 80% of these agrichemicals have been intractable requiring disposal offshore.¹

¹ <http://www.mfe.govt.nz/issues/waste/special/agrichemicals/index.html>

1.1 ASBESTOS

Asbestos use

Asbestos has been used predominantly in construction commonly found in and around older homes such as: roofing materials, shingles, attic and wall insulation, vinyl floor tiles, insulation for water pipes and ashes/embers in gas fireplaces.²



The inhalation of toxic asbestos fibres can cause serious illnesses, including malignant mesothelioma, lung cancer, and asbestosis.³

Should you decide to remove the asbestos and not use professional contractors read the Ministry of Health booklets All About Asbestos (code 7021) and Removing Asbestos From the Home (code 7022). Electronic copies can be obtained from the Health Education Resources website:

<http://www.healthed.govt.nz/uploads/does/HE7021.pdf>

<http://www.healthed.govt.nz/uploads/does/HE7022.pdf>

ASBESTOS: CONTACTS

TRANSFER STATIONS

X Will not accept asbestos

VICTORIA LANDFILL

✓ Special Permit required

Contact:
Landfill Manager
☎03 3885981

CANTERBURY HEATING LTD

✓ Offer a handling and disposal service for residential and commercial clients covering the South Island

336 Breezes Road
Bexley
Christchurch
☎03 388 5981



Poison or Toxic

This symbol indicates materials are poisonous or toxic – materials, if ingested, can cause serious illness or death, in addition to cancer, birth defects, or other chronic health problems⁴

² <http://www.epa.gov/asbestos/pubs/ashome.html#example>.

³ <http://en.wikipedia.org/wiki/Asbestos>

⁴ <http://www.wildededucation.org>

1.2 AUTOMOTIVE

Automotive categories

Automotive Chemicals.....(see Chemicals on page 6)
Automotive Batteries.....(see Batteries on page 5)
Car Bodies.....(see below)
Tyres.....(see below)
Used Oils.....(see Fuels on page15)

CAR BODIES: CONTACTS

ALEXANDRA AUTO PARTS

50 Boundary Road
Alexandra
☎0800 253 9971

- ✓ Will collect and accept car bodies for recycling
- ✓ Charges apply

QUEENSTOWN MAN & A VAN SERVICE

Contact Leigh Blackford
☎027 530 6312

- ✓ Will collect your car and process it for crushing and transportation and for metal recycling. Processing involves bleeding all fluids from the engine, removing tyres, seat coverings and window glass
- ✓ Charges apply

WANAKA TRANSFER STATION

Corner Ballantyne and Riverbank Roads
Wanaka
☎03 443 6063:
Opening Hours: 11.30am – 3.30pm, 7 days

- ✓ Drop-off
- ✓ Charges apply
- ✓ There is an extra charge for draining oil and fluids

TYRES: CONTACTS

FRANKTON TRANSFER STATION

110 Glenda Drive
Frankton Industrial Estate, Queenstown
☎03 451 0106
Opening hours: 8am – 5pm, 7 days

- ✓ Drop-off
- ✓ Tyres accepted for reuse
- ✓ Charges apply

WANAKA WASTEBUSTERS

Cnr Riverbank and Ballantyne Roads
Wanaka
☎03 443 8606
Opening hours: 9am – 4pm; 7 days

- ✓ Tyres and wheels accepted
- ✓ Drop-off
- ✓ Pick ups
- ✓ Charges apply

TYRE DEALERS may accept tyres, as they give away unwanted tyres for reuse

- ✓ Refer to your phone directory

TYRE TRACK for tyre collection is an online database and 0508 phone system to link tyre dealers with transporters, recyclers and sanitary landfills.

- ✓ Further Information available from: <http://www.mta.org.nz/?id=796>

Tyres contain potential contaminants such as heavy metals and organic matter. If not managed appropriately these contaminants can leach into the soil and groundwater. Burning tyres will cause air and water pollution⁵.

⁵ See www.mfe.govt.nz/issues/special/tyres for more information.

1.3 BATTERIES

Battery Types⁶

- **Dry Cell Rechargeable** These batteries are used in mobile phones, cordless power tools, laptop computers, shavers, motorised toys, personal stereos, and cameras.
- **Dry Cell Non-Rechargeable** These single use batteries are used in torches, clocks, shavers, radios, toys and smoke alarms. They come in AA, AAA, C and D, 6 and 9 volt, lantern and miniature sizes.
- **Wet Cell (Lead Acid)** These are used in cars, trucks, boats, tractors and motorcycles.
- **Primary Button Cell** These are used in hearing aids, pacemakers, cameras, pagers, calculators, watches and computers.

BATTERIES: CONTACTS

QUEENSTOWN	FRANKTON TRANSFER STATION 110 Glenda Drive Frankton Industrial Estate Queenstown ☎03 451 0106 Opening hours: 8am – 5pm, 7 days	✓ Drop-off ✓ Wet cell batteries ✓ Primary button cells ✓ Charges apply
Recycle 🗑️	WAKATIPU RECYCLING CENTRE 110 Glenda Drive Frankton Queenstown 03 4510120 Opening hours: 8.00am – 5.00pm, 7 days	✓ Drop-off ✓ Wet cell batteries ✓ All dry cell batteries ✓ No charge
WANAKA	WANAKA TRANSFER STATION Corner Ballantyne and Riverbank Roads Wanaka ☎03 443 6063: Opening Hours: 11.30am – 3.30pm, 7 days	✓ Drop-off ✓ Wet cell batteries ✓ Primary button cells ✓ Charges apply
Recycle 🗑️	WANAKA WASTEBUSTERS Cnr Riverbank and Ballantyne Roads Wanaka ☎03 443 8606 Opening Hours: 9.00am – 4.00pm; 7 days	✓ Drop-off (No charge) ✓ Pick up (charge applies) ✓ Wet cell batteries ✓ All dry cell batteries ✓ Primary button cells
LOCAL SERVICE STATIONS	Check if a service station near you will accept your unwanted batteries.	✓ Drop-off ✓ Wet cell batteries

⁶ Batteries "are a concentrated source of toxic heavy metals such as mercury, lead and cadmium. The amount of these heavy metals may vary from battery to battery...If batteries containing heavy metals are disposed of inappropriately the metals can leach out and pollute the soil and groundwater, endangering humans and wildlife. Long-term exposure to cadmium, a known human carcinogen, can cause liver and lung disease": Ministry for the Environment, Wellington, The Safe use and disposal of batteries, July 2008. Retrieved 25 November 2008: <http://www.mfe.govt.nz/issues/waste/special/index.html>.

1.4 CHEMICALS

Chemical categories

Agrichemicals.....(see below)
Household Chemicals.....(see page 7)

Agrichemical use

Agrichemicals or agricultural chemicals are chemicals usually used for agricultural purposes (both large and small scale). Most of these chemicals can be described as intractable⁷, and include old pesticides, insecticides and fertilisers. Intractable agrichemicals used in New Zealand include (but are not limited to) Organochlorines⁸ or persistent organic pollutants (POPs), for example:

- Dieldrin⁹ used as an insecticide and in timber processing;
- DDT¹⁰ used as an insecticide;
- Dioxin contained in the herbicide 2,4,5-T¹¹;
- Lindane¹² used to control grass grub and cattle lice and insect control in orchards; and
- Fertilisers than contain DDT, Aldrin or similar.

AGRICHEMICALS: CONTACT

OTAGO REGIONAL COUNCIL
☎03 474 0827

- ✓ Agrichemical Collection Programme: This is a free urban and rural collection of unwanted agricultural chemicals and animal remedies

⁷“Any hazardous waste that does not degrade naturally into non-hazardous residues over time when released into the environment, and for which there is no present environmentally acceptable methods of treatment or disposal currently available in New Zealand”: http://www.orc.govt.nz/Documents/ContentDocuments/regional_plan_waste/10.%20Glossary.pdf

⁸ Organochlorine chemicals are carbon and chlorine chemicals combined, which bioaccumulate, building up within the body, in humans and mammals, and stay in the environment and in our bodies for a long time. Certain organochlorine chemicals are classified as persistent organic pollutants (POPs) under the United Nations Stockholm Convention on Persistent Organic Pollutants. The Convention aims to protect human health and the environment by banning the production and use of POPs, at the global level. Chemicals listed as POPs under the Convention are: (a) nine pesticides (aldrin, chlordane, DDT, dieldrin, endrin, heptachlor, mirex, hexachlorobenzene and toxaphene); (b) polychlorinated byphenyls (PCBs [industrial chemicals]); and, (c) dioxins and furans. Ministry for the Environment: Wellington, Targets in the New Zealand Waste Strategy: 2006 Review of Progress, 2006, p.48.

⁹ Its sale for use in agriculture was banned in 1968, and its sale for use for other purposes (such as spider control) was banned in 1989: Taranaki Regional Council, Taranaki, *Cleaning Up The Leftovers*, December 2004, p.4.

¹⁰ In 1970 the use of DDT on farmland was prohibited, and its sale for other uses (such as household borer bombs) was banned in 1989: Taranaki Regional Council, Taranaki, *Cleaning Up The Leftovers*, December 2004, p.4.

¹¹ The manufacture of dioxin for use in the herbicide 2,4,5-T ceased in 1987:
<http://www.mfe.govt.nz/issues/hazardous/contaminated/organochlorines.html>.

¹² Its sale was banned in 1989: Taranaki Regional Council, Taranaki, *Cleaning Up The Leftovers*, December 2004, p.4.

Household chemical use

Household chemicals¹³ include but are not limited to:

- Pet flea collars;
- Toilet bowl cleaners;
- Furniture, floor and shoe polish;
- Disinfectant;
- Ink and dyes;
- Detergents and glass cleaners;
- Bleaches;
- Room deodorisers;
- Oven Cleaners; and
- Swimming Pool Chemicals.

Garden chemicals may include but are not limited to:

- Pesticides, herbicides and fertilisers.

DIY products such as:

- Solvents, glues, varnishes and wood preservatives, anti-freeze fluids and automotive chemicals, pool chemicals, brake fluids and photographic chemicals.

Hazardous waste amnesty

The Council holds an Annual Hazardous Waste Amnesty in May each year. The annual hazardous waste drop-off service will be held on consecutive days at Frankton and Wanaka transfer stations. This service will be provided for the community to drop off hazardous waste material free of charge. The hazardous waste will be appropriately managed and sorted for safe recycling and disposal.

The Hazardous Waste Amnesty will be carried out at the Frankton and Wanaka transfer stations during the following opening hours:

Frankton Transfer Station

110 Glenda Drive
Frankton Industrial Estate
8.00 am to 5.00 pm

Wanaka Transfer Station

Ballantyne Road
Wanaka
11.30 am to 3.30 pm

Hazardous wastes that will be **Accepted** and **Not Accepted** are as follows:

ACCEPTED HAZARDOUS WASTE:

Household/Commercial Products

- | | |
|---------------------------|--------------------------------|
| ✓ Chemicals | ✓ Fuels |
| ✓ Kerosene | ✓ Oven, toilet, drain cleaners |
| ✓ Paint & paint strippers | ✓ Poisons |
| ✓ Pool chemicals | ✓ Stain removers |
| ✓ Solvents & turpentine | ✓ Vegetable oils |

Garden Products

- | | |
|-----------------------------|--------------------|
| ✓ Fertilisers | ✓ Fungicides |
| ✓ Herbicides & Weed Killers | ✓ Insecticides |
| ✓ Pesticides | ✓ Timber treatment |
| ✓ Timber preservatives | ✓ Timber varnishes |

¹³Information on whether the chemicals you have are hazardous or not, or for a comprehensive list refer to the New Zealand Waste List, see <http://www.mfe.govt.nz/issues/waste/hazardous/index.html>. You can also check <http://www.erna.govt.nz> for classification of hazardous chemicals and an inventory of hazardous chemicals.

Vehicle Products

- ✓ Antifreeze
- ✓ Degreasers
- ✓ Fuels
- ✓ Brake Fluid
- ✓ Lubricants

NON ACCEPTED HAZARDOUS WASTE:

X Asbestos	See Directory of Contacts for further information
X Batteries	See Directory of Contacts for further information
X Electronic Waste	See Directory of Contacts for further information
X Fluorescent Light Fittings	See Directory of Contacts for further information
X LPG Gas Cylinders	See Directory of Contacts for further information
X Mineral Oil	See Directory of Contacts for further information
X Mobile Phones	See Directory of Contacts for further information
X Pharmaceuticals	See Directory of Contacts for further information

Please Note:

- The service is open to all residents and businesses within the Queenstown Lakes District.
- A limit of 20 litres or 20 kilograms of the same waste type will be applicable.
- When transporting hazardous waste ensure:
 - All containers are in good condition: i.e. no holes or cracks;
 - Solid hazardous wastes in damaged or old containers should be put into heavy duty plastic bags;
 - Leaking containers should be placed into a bucket with a tight fitting lid;
 - Do not mix different types of hazardous waste together;
 - Transport wastes in upright containers to prevent liquid or gas leaks.

HAZARDOUS WASTE AMNESTY: CONTACT

QUEENSTOWN LAKES DISTRICT COUNCIL

Contact for more information:
Customer Services Team

☎ 03 441 0499

Email: services@qldc.govt.nz

- ✓ Annual drop-off of hazardous waste
- ✓ For further information see information sheet on Council's website: www.qldc.govt.nz
- ✓ No charges apply (subject to conditions)



CORROSIVE

This symbol indicates corrosive material, corrosive materials can eat away other substances, including living tissue

1.5 CONTAINERS CONTAMINATED WITH HAZARDOUS WASTE

CONTAMINATED CONTAINERS: CONTACTS

AGRECOVERY RURAL RECYCLING 3R GROUP LIMITED

409 Queen Street West
Hastings 4156
Hastings
☎0800 247 326

Website: <http://www.agrecovery.co.nz>

Email: info@agrecovery.co.nz

- ✓ A nationwide programme for the recovery of agrichemical containers
- ✓ Containers to be triple-rinsed
- ✓ Triple rinsing and cleaning tips are outlined at www.agrecovery.co.nz

FRANKTON TRANSFER STATION

110 Glenda Drive
Frankton Industrial Estate
Queenstown
☎03 451 0106
Opening hours: 8am – 5pm, 7 days

- ✓ Drop-off
- ✓ Used oil and plastic containers
- ✓ Charges apply

WANAKA TRANSFER STATION

Corner Ballantyne and Riverbank
Roads
Wanaka
☎03 443 6063:
Opening Hours:
11.30am – 3.30pm, 7 days

- ✓ Drop off
- ✓ Used oil and plastic containers
- ✓ Charges apply

QUEENSTOWN LAKES DISTRICT COUNCIL: Hazardous Waste Amnesty

Contact for more information:
Customer Services Team
☎03 441 0499
Email: services@qldc.govt.nz

- ✓ Hazardous waste amnesty
- ✓ For further information see information on Council's website: www.qldc.govt.nz
- ✓ No charge



1.6 ELECTRICAL

Electrical waste¹⁴ includes

Appliances

- Televisions, video and DVD Players, stereos, entertainment electronics, kitchen appliances.

Computers, Monitors, Office IT Equipment

Mobile Phones and Accessories
Printer Cartridges

- Telecom and Vodafone.
- Printer waste such as toner bottles, laser cartridges, fascimile and inkjet cartridges.

Whiteware

- Fridges, washing machines, dryers, ovens, microwaves, freezers.

APPLIANCES: CONTACTS

QUEENSTOWN

FRANKTON TRANSFER STATION

110 Glenda Drive
Frankton Industrial Estate, Queenstown
☎03 451 0106
Opening hours: 8am – 5pm, 7 days

- ✓ Drop-off
- ✓ Charges apply

Disposal ☞

Reuse and Recycle ☞

SALVATION ARMY

62 Industrial Place
Gorge Road, Queenstown
☎03 442 9661
Opening hours: 10am – 5pm Mon-Fri,
10am – 2pm Saturdays

- ✓ Drop-off
- ✓ In working order only

Reuse and Recycle ☞

WAKATIPU RECYCLING CENTRE

110 Glenda Drive
Frankton, Queenstown
☎ (03) 451 0120
Opening hours: 8am – 5pm; 7 days

- ✓ Drop-off
- ✓ In working order only
- ✓ No charge

WANAKA

WANAKA TRANSFER STATION

Corner Ballantyne and Riverbank Roads
Wanaka
☎03 443 6063:
Opening Hours:
11.30am – 3.30pm, 7 days

- ✓ Drop-off
- ✓ Charges apply

Disposal ☞

Reuse and Recycle ☞

WANAKA WASTEBUSTERS

Cnr Riverbank and Ballantyne Roads
Wanaka
☎ (03) 443 8606
Opening hours: 9.00am - 4.00pm; 7 days

- ✓ Pick-up
- ✓ Drop-off
- ✓ Charges apply

Sell on-line or advertise ☞

WASTE EXCHANGE: www.recirculate.org.nz
DONATE NZ: <http://www.donatenz.co.nz>
TRADE ME: <http://www.trademe.co.nz>
UPPER CLUTHA MESSENGER:
☎03 443 7804

- ✓ All appliances that can be reused can be on-sold!

¹⁴Electrical waste and electronic equipment may contain substances (lead, cadmium, mercury, chromium and brominated flame retardant plastics) which are dangerous if they are burnt or if they leach into the soil or waterways: Ministry for the Environment: Wellington, Targets in the New Zealand Waste Strategy: 2006 Review of Progress, 2006, p.48.

Computers, monitors, office IT equipment

The Council and Wanaka Wastebusters provide an annual drop off for non-working and obsolete computer equipment called eDay.

What is eDay all about? eDay is a community initiative created in response to a growing concern about the volume of e-waste being dumped in landfills around the country with a potentially toxic effect on the environment. Launched in Wellington in 2006, fifty-four tonnes of unused computer hardware were collected in one day. In 2007 eDay was extended to 12 locations throughout New Zealand where a total of 6,900 cars dropped off 415 tonnes of e-waste. This included more than 26,000 computer items including monitors, CPUs and printers.¹⁵ eDay is now available once a year in Queenstown and Wanaka, for more information on computers, monitors and office IT equipment refer to the contacts listed below:

COMPUTERS, MONITORS, OFFICE IT EQUIPMENT: CONTACTS

QUEENSTOWN LAKES DISTRICT COUNCIL

Contact for more information:
Customer Services Team
☎03 441 0499
Email: services@qldc.govt.nz
Web: www.eday.org.nz

- ✓ Check online for details of the next eDay: see Councils website: www.qldc.govt.nz and www.eday.org.nz.

<p>Sell on-line or advertise ☞</p>	<p>WASTE EXCHANGE: www.recirculate.org.nz DONATE NZ: http://www.donatenz.co.nz TRADE ME: http://www.trademe.co.nz UPPER CLUTHA MESSENGER: ☎03 443 7804</p>	<ul style="list-style-type: none"> ✓ All appliances that can be reused can be on-sold!
---	---	---

MOBILE PHONES AND ACCESSORIES: CONTACTS

QUEENSTOWN

WAKATIPU RECYCLING CENTRE

110 Glenda Drive
Frankton
Queenstown
☎03 451 0120
Opening hours: 8.00am – 5.00pm; 7 days

- ✓ Drop-off Vodafone and Telecom unwanted mobile phones and accessories - for reuse and recycling

Reuse and Recycle ☞

BIG BEAR COMPUTERS

11 Henry Street
Queenstown
☎03 441 6000

- ✓ Outlets for Telecom mobile phones and accessories
- ✓ Will also accept Vodafone

Reuse and Recycle ☞

NOEL LEEMING

Remarkables Park
Queenstown
☎03 450 9170

- ✓ Outlets for Telecom mobile phones and accessories
- ✓ Will also accept Vodafone

¹⁵ <http://www.eday.org.nz>

Reuse and Recycle	VODAFONE O'Connells Shopping Centre Queenstown ☎03 442 4934	✓ Drop-off unwanted Vodafone mobile phones and accessories for reuse and recycling
WANAKA	WANAKA WASTEBUSTERS Cnr Riverbank and Ballantyne Roads Wanaka ☎03 443 8606 Opening hours: 9.00am - 4.00pm; 7 days	✓ Drop-off Vodafone and Telecom unwanted mobile phones and accessories - for reuse and recycling
Reuse and Recycle	VODAFONE Spencer House Mall Wanaka ☎03 443 2086	✓ Drop-off unwanted Vodafone mobile phones and accessories for reuse and recycling
VODAFONE FREEPOST	VODAFONE HANDSET RECYCLING PROGRAMME Private Bag 9222 Auckland http://www.vodafone.co.nz/	<ul style="list-style-type: none"> ✓ Send your unwanted Vodafone mobile phones and accessories in the post ✓ No charge

Did You Know?
A plastic cartridge takes about 400 years to decompose in the landfill. By choosing to refill or recycle you will be helping to save your environment¹⁶.

PRINTER CARTRIDGES: CONTACTS

QUEENSTOWN Recycle	CARTRIDGE WORLD 3 Church Street Queenstown ☎03 442 6878 Opening hours: 9.00am – 5.00pm Mon-Fri	<ul style="list-style-type: none"> ✓ Drop-Off ✓ All cartridge types accepted ✓ No charge
Recycle	TONER RECYCLING CENTRE Free ☎0800 180 160 Email: http://www.trconline.co.nz	<ul style="list-style-type: none"> ✓ Phone to arrange Drop-Off ✓ All cartridge types accepted ✓ Phone to check if charges apply
Recycle	WAKATIPU RECYCLING CENTRE 110 Glenda Drive Frankton Queenstown ☎03 451 0120 Opening hours: 8.00am – 5.00pm; 7 days	<ul style="list-style-type: none"> ✓ A drop-off box is available ✓ No Charge
Recycle	PAPER PLUS 10 Brecon Street Queenstown ☎03 442 5296	<ul style="list-style-type: none"> ✓ Drop-Off ✓ All cartridge types accepted ✓ No charge

¹⁶ See www.cartridgeworld.co.nz for more information.

WANAKA	PAPER PLUS 23 Helwick Street Wanaka ☎03 443 7532	<ul style="list-style-type: none"> ✓ Drop-Off ✓ All cartridge types accepted ✓ No charge
Recycle ☞	WANAKA WASTEBUSTERS Cnr Riverbank and Ballantyne Roads Wanaka ☎03 443 8606 Opening hours: 9.00am - 4.00pm; 7 days	<ul style="list-style-type: none"> ✓ Drop-Off ✓ All cartridge types accepted ✓ No charge
<u>WHITEWARE: CONTACTS</u>		
QUEENSTOWN	FRANKTON TRANSFER STATION 110 Glenda Drive Frankton Industrial Estate Queenstown ☎03 451 0106 Opening hours: 8am – 5pm, 7 days	<ul style="list-style-type: none"> ✓ Drop-Off ✓ Degassing: H & J Electrical (Queenstown) offer a degassing service and will transport your fridge/freezer to the transfer station for you ✓ Charges apply
Disposal ☞	WAKATIPU RECYCLING CENTRE 110 Glenda Drive Frankton Queenstown ☎03 451 0120 Opening hours: 8.00am – 5.00pm; 7 days	<ul style="list-style-type: none"> ✓ Drop-Off ✓ In good working order only ✓ No charge
Reuse and Recycle ☞	H & J ELECTRICAL 121 Glenda Drive Frankton Queenstown ☎03 443 7804	<ul style="list-style-type: none"> ✓ Degassing: H & J Electrical (Queenstown) offer a degassing service and will transport your fridge/freezer to the transfer station for you ✓ Charges apply
Recycle ☞	WANAKA TRANSFER STATION Corner Ballantyne and Riverbank Roads Wanaka ☎03 443 6063: Opening Hours:11.30am – 3.30pm, 7 days	<ul style="list-style-type: none"> ✓ Drop-Off ✓ Degassing is required ✓ Charges apply
WANAKA	WANAKA WASTEBUSTERS Cnr Riverbank and Ballantyne Roads Wanaka ☎03 443 8606 Opening hours: 9.00am - 4.00pm; 7 days	<ul style="list-style-type: none"> ✓ Drop-Off or Pick Up ✓ Degassing not required ✓ Charges apply
Recycle ☞	WANAKA WASTEBUSTERS Cnr Riverbank and Ballantyne Roads Wanaka ☎03 443 8606 Opening hours: 9.00am - 4.00pm; 7 days	<ul style="list-style-type: none"> ✓ Drop-Off or Pick Up ✓ Degassing not required ✓ Charges apply

Sell on-line or advertise ☞	WASTE EXCHANGE: www.recirculate.org.nz DONATE NZ: http://www.donatenz.co.nz TRADE ME: http://www.trademe.co.nz UPPER CLUTHA MESSENGER: ☎03 443 7804	<ul style="list-style-type: none"> ✓ All appliances that can be reused can be on-sold!
------------------------------------	--	---

1.7 EXPLOSIVES



Do not try to transport explosives without first getting advice from the police.

If you have explosive materials or devices phone your local police station for instructions on safely moving or disposing of them.

EXPLOSIVES: CONTACTS

QUEENSTOWN POLICE STATION

11 Camp Street
Queenstown
☎03 441 1600

- ✓ Ammunition and guns should be handed to your local police station

ARROWTOWN POLICE STATION

57 Buckingham Street
Arrowtown
☎03 442 1274

- ✓ Ammunition and guns should be handed to your local police station

WANAKA POLICE STATION

Helwick Street
Wanaka
☎03 443 7272

- ✓ Ammunition and guns should be handed to your local police station



Explosive

This symbol indicates materials may react violently when exposed to heat or other substances. They may also be toxic to humans or other living things¹⁷

¹⁷ <http://www.wildeducation.org>

1.8 FIRE EXTINGUISHERS



Fire Extinguishers Must Not Be Disposed Of With General Refuse

CAUTION: Fire extinguishers can explode when compacted releasing harmful substances and creating a health and safety hazards for refuse collectors.

FIRE EXTINGUISHERS: CONTACTS

YELLOW EXTINGUISHERS

- ✓ Contact details for servicing and disposal will be written on the extinguisher

REFER TO EXTINGUISHER

OTHER TYPES OF EXTINGUISHER

- ✓ Can be refilled and reused
- ✓ Contact details for servicing will be written on the extinguisher
- ✓ Extinguishers will need to be pressure tested before refilling

REFER TO EXTINGUISHER

Did You Know?

It is illegal to discharge the contents of a yellow fire extinguisher unless it is to put out a fire as they contain emissions that affect the ozone layer¹⁸.



¹⁸ See www.fireprotection.org.nz for more information.

1.9 FUELS & USED OILS

Fuels include:

- Unwanted diesel
- Unwanted petrol
- Mixed oils (oil that has been mixed with other fuels such as petrol, diesel or other hazardous waste)
- Aviation fuel
- Used engine, machinery lubricating and hydraulic oil¹⁹

FUELS & USED OIL: CONTACTS

WAKATIPU RECYCLING CENTRE

110 Glenda Drive

Frankton

Queenstown

☎03 451 0120

Opening hours: 8.00am – 5.00pm; 7 days

- ✓ Drop-off
- ✓ Engine oil only
- X No solvents or fuels
- X No mineral (cooking) oil
- ✓ No charge for households
- ✓ Charges apply to business customers

QUEENSTOWN LAKES DISTRICT COUNCIL

Contact for more information:

Customer Services Team

☎03 441 0499

Email: services@qldc.govt.nz

- ✓ Hazardous waste amnesty
- ✓ For further information see information on Council's website: www.qldc.govt.nz
- ✓ Free of charge (conditions apply)

WANAKA WASTEBUSTERS

Cnr Riverbank and Ballantyne Roads
Wanaka

☎03 443 8606

Opening hours: 9.00am - 4.00pm; 7 days

- ✓ Pick up
- ✓ Drop-off
- ✓ Engine oil
- ✓ Vegetable oil
- X No solvents or fuels
- ✓ No charge for households
- ✓ Charges apply to business customers

SERVICE STATIONS

Refer to your phone directory for contact details.

- ✓ Service stations may accept unwanted fuels and used oils.

Remember!

Dispose of used oil and fuels appropriately.

Pouring hazardous waste down the storm-water drain will pollute waterways, destroy habitats and harm aquatic life and living animals²⁰.

¹⁹Used oil is the single largest non-watery liquid waste stream in New Zealand. An estimated 33 to 40 million litres of waste oil are generated each year. The major oil companies involved in the waste oil product stewardship scheme operate a nationwide collection network. This is available to territorial authorities to use at their landfill and transfer stations on a user-pays basis Ministry for the Environment: Wellington, *Targets in the New Zealand Waste Strategy: 2006 Review of Progress*, 2006, p.48.

²⁰ See www.mfe.govt.nz/issues/special/oil for more information.

1.10 GAS CYLINDERS



A compressed gas cylinder is considered 'empty' if the pressure inside the cylinder equals or nearly equals atmospheric pressure.

If it is not empty compressed gasses may be flammable, reactive, corrosive and/or toxic, depending on the gas involved.

GAS CYLINDERS: CONTACTS

FRANKTON TRANSFER STATION

110 Glenda Drive
Frankton Industrial Estate
Queenstown
☎03 451 0106
Opening hours: 8am – 5pm, 7 days

- ✓ Drop-Off
- ✓ Refillable gas cylinders (LPG bottles)
- ✓ Single use
- ✓ Camping stove cylinders
- ✓ Empty cylinders can be decommissioned at the transfer station
- ✓ Charges apply

WANAKA TRANSFER STATION

Corner Ballantyne and Riverbank Roads
Wanaka
☎03 443 6063:
Opening Hours:
11.30am – 3.30pm, 7 days

- ✓ Drop-Off
- ✓ Refillable gas cylinders (LPG bottles)
- ✓ Single use
- ✓ Camping stove cylinders
- ✓ Empty cylinders can be decommissioned at the transfer station
- ✓ Charges apply

WANAKA WASTEBUSTERS

Cnr Riverbank and Ballantyne Roads
Wanaka
☎03 443 8606
Opening hours: 9.00am - 4.00pm; 7 days

- ✓ Drop-Off
- ✓ Refillable gas cylinders (LPG bottles)
- ✓ Single use
- ✓ Camping stove cylinders
- ✓ Cylinder must be empty
- ✓ Charges apply

Sell on-line or advertise 

WASTE EXCHANGE: www.recirculate.org.nz
DONATE NZ: <http://www.donatenz.co.nz>
TRADE ME: <http://www.trademe.co.nz>
UPPER CLUTHA MESSENGER:
☎03 443 7804

- ✓ All appliances that can be reused can be on-sold!



Flammable

***Flammable materials will burn under certain conditions.
They may also be toxic to humans or other living things.²¹***

²¹ <http://www.wildeducation.org>

1.11 LIGHTING PRODUCTS

Did You Know?

Fluorescent tubes contain glass, metal and mercury. Disposal to landfill or incineration is not acceptable. PCBs are still occasionally found in capacitors of old fluorescent light fittings.

When buying compact fluorescent bulbs look for brands which are low in mercury and lead, contain safety glass and offer a 'take back' recycling scheme²².

LIGHTING PRODUCTS: CONTACTS

WAKATIPU RECYCLING CENTRE

110 Glenda Drive

Frankton

Queenstown

☎03 451 0120

Opening hours: 8.00am – 5.00pm; 7 days

- ✓ Drop-Off
- ✓ Fluorescent lights
- ✓ Lights containing mercury
- ✓ Ecobulbs contain a small amount of mercury
- ✓ Charges apply

WANAKA WASTEBUSTERS

Cnr Riverbank and Ballantyne Roads

Wanaka

☎03 443 8606

Opening hours: 9.00am - 4.00pm; 7 days

- ✓ Drop-Off
- ✓ Fluorescent lights
- ✓ Lights containing mercury
- ✓ Ecobulbs contain a small amount of mercury
- ✓ Charges apply

INTERWASTE²³

53-55 Ward Street

PO Box 272

Dunedin

☎03 479 0045

- ✓ Offer a zero-to-landfill 100% recycling service for all forms of mercury lights
- ✓ Collection service across New Zealand, and provide purpose built boxes for collection and transportation of tubes²⁴
- ✓ Charges apply



²² See www.zerowaste.co.nz, www.interwaste.co.nz and www.mfe.govt.nz/publications.waste for more information.

²³ Recyclers (such as Interwaste) separate the tubes into their component materials – glass, metal, phosphor powder and mercury so that these materials can be recycled or reused. Aluminium can be recycled into cast products. Glass can be recycled into glass wool for home insulation. Mercury is recycled into dental amalgam and recycled back into lights, for example. Phosphor powder can be used in the manufacture of fertiliser products.

²⁴ The tubes are processed in New Zealand then sent to EcoCycle in Australia for recycling.

1.12 PHARMACEUTICALS

Pharmaceuticals:

Pharmaceutical waste may include old medicines, ointments, cough mixtures, equipment (sharps such as syringes), vitamins, powders, ampoules, inhalers, and any contaminated medical dressings, considered hazardous.

PHARMACEUTICALS: CONTACTS

REFER TO YOUR PHONE DIRECTORY ALSO

QUEENSTOWN	SUMMERFIELDS PHARMACY 1091 Frankton Road Frankton Queenstown ☎03 442 3467	✓ Drop-off ✓ Disposal bin for unwanted medicines X No disposal bin for sharps
	UNICHEM WILKINSONS PHARMACY Cnr The Mall & Rees Street Queenstown ☎03 442 7313	✓ Drop-off ✓ Disposal bin for sharps ✓ Disposal bin for unwanted medicines
WANAKA	ASPIRING PHARMACY 29 Helwick Street Wanaka ☎03 443 7986	✓ Drop-off ✓ Disposal bin for sharps ✓ Disposal bin for unwanted medicines



Biohazardous/Infectious

This symbol indicates that materials may pass on disease. It is highly unlikely household items would contain this symbol. If you see containers with this symbol stay away from them!²⁵

²⁵ <http://www.wildeducation.org>

1.13 PAINT & SOLVENTS

Paint categories defined:

Household	These may be water based or solvent based (referred to as oil-based) and include wood stains and finishes, and lacquers or polyurethanes. ²⁶
Special Purpose	These paints include anti-fouling paint for boats and aerosol paints, as well as paint used for artwork. Very old lead-based paint also belongs in this category.
Industrial	Industrial paints are used in specialist coatings in the automotive industry, aircraft and on various machines.
Solvents and Paint Products	Such as: paint thinners, turpentine and mineral spirits.

PAINT: CONTACTS

QUEENSTOWN	FRANKTON TRANSFER STATION	✓ Drop-off
Disposal ☞	110 Glenda Drive	✓ All paint types and paint products
	Frankton Industrial Estate	✓ Charges apply
	Queenstown	
	☎03 451 0106	
	Opening hours: 8am – 5pm, 7 days	
Reuse and Recycle ☞	PLACEMAKERS	✓ See below for what Placemakers <u>DO</u> and <u>Do NOT</u> accept
	1 Glenda Drive	
	Frankton	
	Queenstown	
	☎03 450900	
	Email: http://www.placemakers.co.nz	
	Opening hours:	
	7.00am – 5.30pm Mon-Fri	
	8.00am – 3.00pm Saturday	
	9.30am – 3.00pm Sunday	
Reuse and Recycle ☞	RESENE COLOURSHOP	✓ Accepts all decorative paint and containers
	87 Gorge Road	✓ Free of charge for Resene paints and Resene containers
	Queenstown	✓ Other brands, charges apply (\$1 per 4L can or similar, \$2.50 per 10L pail or larger)
	☎03 442 4152	
	Email: http://www.resene.co.nz	

²⁶ The ingredients in paint that are of concern are the solvents in solvent-based (also often referred to as oil-based) paint. Solvents contain volatile organic compounds that can have an impact on people's health, and they are also flammable. Water-based household paints are not considered dangerous to human health, but as long as these paints are liquid they can spill and end up in streams, rivers and the sea where they can kill fish and other water dwellers (www.hazmobile.govt.nz/waste-paint.htm).

WANAKA

Disposal 🗑️

WANAKA TRANSFER STATION

Corner Ballantyne and Riverbank
Roads
Wanaka
☎03 443 6063:
Opening Hours:
11.30am – 3.30pm, 7 days

- ✓ Drop-off
- ✓ All paint types and paint products
- ✓ Charges apply

Reuse and Recycle ♻️

PLACEMAKERS

8 Connell Terrace
Wanaka
☎03 443 0080
Email: <http://www.placemakers.co.nz>
Opening hours:
7.00am – 5.30pm Mon-Fri
9.00am – 1.00pm Weekends

- ✓ See below for what Placemakers **DO** and **Do NOT** accept...

Reuse and Recycle ♻️

WANAKA WASTEBUSTERS

Cnr Riverbank and Ballantyne Roads
Wanaka
☎03 443 8606
Opening hours: 9.00am - 4.00pm; 7 days

- ✓ Paint products in reusable condition
- ✓ Dry empty paint cans
- ✓ Drop-offs
- ✓ Pick up
- ✓ No charges apply

PlaceMakers **DO** Accept:

- ✓ All Liquid Acrylic Paint
- ✓ All Liquid Oil Based Paint
- ✓ Oil Stains
- ✓ Raw or Boiled Linseed Oil
- ✓ Tung Oil
- ✓ Turps
- ✓ Meths

PlaceMakers **DO NOT** Accept:

- X Texture Coating or Gritty Paint
- X Automotive or Marine Paint
- X Lead Based Paint
- X Bituminous Paint
- X Polyurethane
- X Varnish
- X Aerosols
- X Filling Components
- X Dry Paint
- X Acids
- X Empty Containers

1.14 POLLUTION RESPONSE

Call the NZ Fire Service Immediately On 111 If You See A Pollution Spill That Is Anything Other Than Minor

24 Hour Pollution Hotline ☎0800 800 033

Contact

Otago Regional Council
☎03 474 0827

Queenstown Lakes District Council
☎03 441 0499 (Queenstown)

Queenstown Lakes District Council
☎03 443 0024 (Wanaka)

Pollution Response responsibility

Responsible for Air Pollution & Water Pollution

Responsible for Land Pollution & Water Pollution

Responsible for Land Pollution & Water Pollution

What Information Do I Need To Provide When Reporting A Pollution Spill?

- ✓ Your name and contact number;
- ✓ Location of the pollution and the suspected source;
- ✓ Whether you saw someone cause the spill;
- ✓ The nature of the spill, for example is it bubbling or foaming;
- ✓ What you think the substance might be; and
- ✓ Whether you believe the spill is likely to cause harm to people or property.

For more information please contact:

Queenstown Lakes District Council
Private Bag 50072
Queenstown

Tel: +64 3 441 0499
Fax: +64 3 450 2223
Email: services@qldc.govt.nz
Website: www.qldc.govt.nz



April 2009