

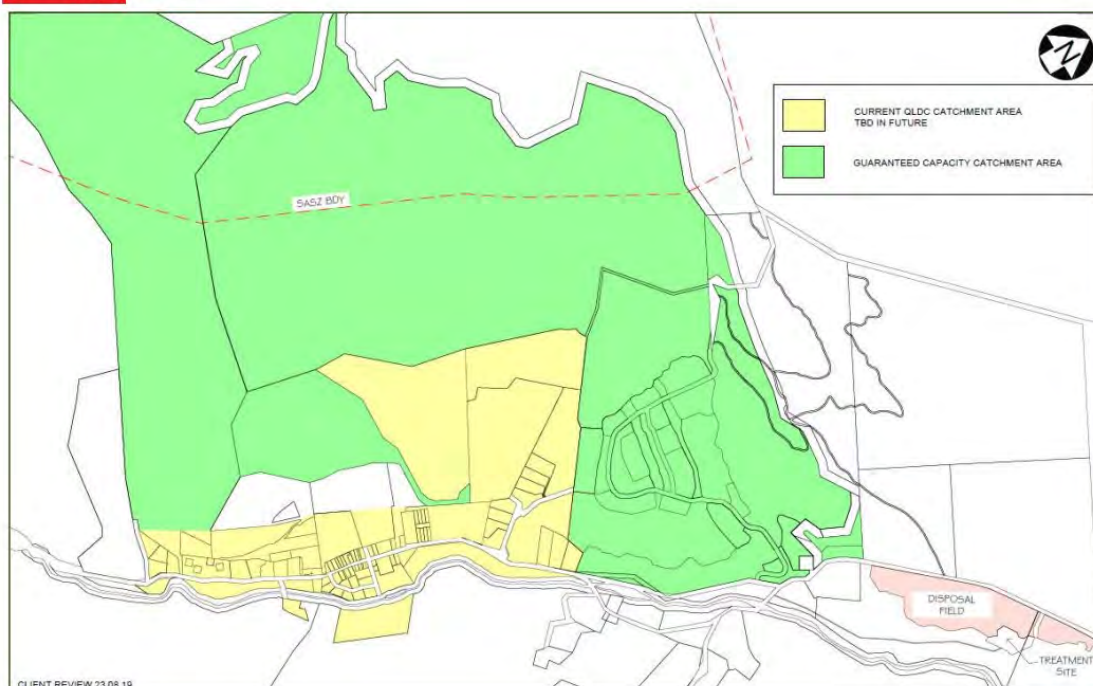
ATTACHMENT F: Proposed change to Cardrona Development Contribution Contributing Area Maps – page 27 of 40, see supporting documents to in the Development Contribution Policy 2021; Volume 2 of 2021/31 Ten Year Plan

<https://www.qldc.govt.nz/media/u25fpdx/final-contributing-area-maps.pdf>

The below figure in the QLDC TEN YEAR PLAN 2021–2031 VOLUME TWO Development Contribution Policy 2021 – Supporting Documents; Contributing Area Maps Page 27 of 40 Cardrona 17.1 - Water Supply & Wastewater shall be amended as shown below.

Specifically first such that the title and reference of *17.1 Water Supply & Wastewater* to be amended in title and reinstated as *17.1 Wastewater*. Removing any reference to water supply.

17. Cardrona
17.1 Water Supply & Wastewater



Second, a new map 17.2 Cardrona Water Supply to be adopted as per Attachment E, and as shown below.

