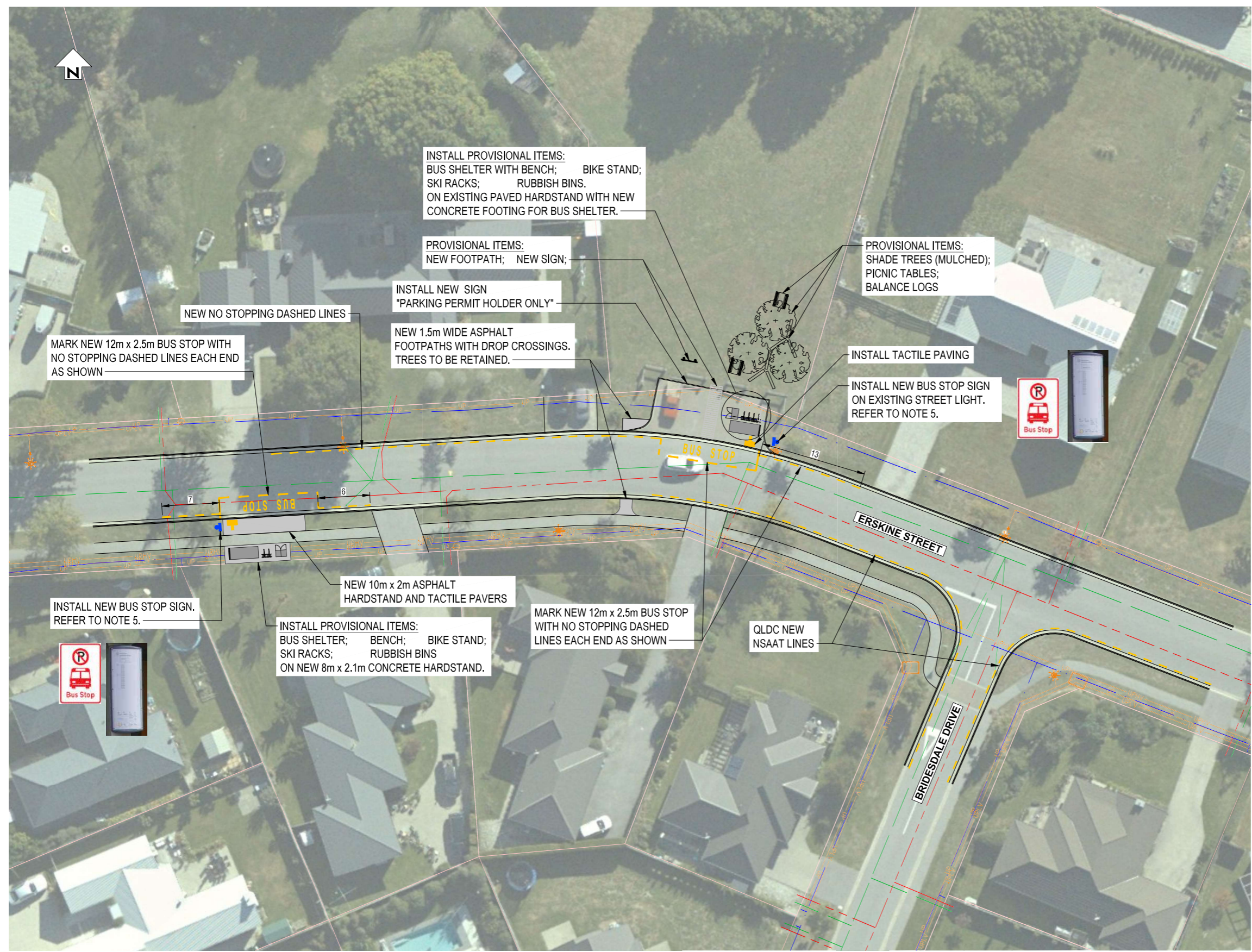


DO NOT SCALE - IF IN DOUBT, ASK

200 mm  
150  
100  
50  
0

ORIGINAL SIZE A1

Last modified: Feb 5 2021 By Phillip Cook



**NOTES**

- CONTRACTOR TO SUPPLY, FABRICATE AND INSTALL NEW QLDC STANDARD BUS SHELTER WITH SKI RACK ACCESSORY FROM CAM NZ OR APPROVED EQUIVALENT.
- REFER TO OPUS DRAWING 6-XQ081.01-C05 FOR BUS SHELTER DETAILS AND SPECIFICATIONS, DRAWING 6-XQ081.01-C06 FOR BUS SHELTER STANDARD SLAB DETAILS AND 6-XQ081.01-C07 FOR STANDARD BIKE RACK DETAILS.
- ALL CONSTRUCTION ELEMENTS ARE TO BE IN ACCORDANCE WITH QLDC STANDARD DETAILS, REFER TO LIST ABOVE.
- ALL TRAFFIC SIGNS AND ROAD MARKINGS TO BE IN ACCORDANCE WITH MOTSAM/TCO.
- BUS STOP SIGN SUPPLIERS:
  - RP-5 BUS STOP AND POST TO BE SUPPLIED BY CONTRACTOR.
  - TIMETABLE TO BE SUPPLIED BY ORC.
  - SWIVEL BOARD TO BE SUPPLIED BY QLDC.
- TREES TO BE TRIMMED TO ALLOW FOOTPATH CONSTRUCTION.

**SERVICES DISCLAIMER**

PIPES, CABLES AND OTHER UTILITIES, FOUNDATIONS, LEVELS, REFERENCE MARKS AND OTHER OBSTRUCTIONS INDICATED ON THIS DRAWING ARE BASED ONLY ON READILY AVAILABLE RECORD PLANS AND OTHER INFORMATION. THIS INFORMATION MAY NOT BE COMPLETE, ACCURATE NOR UP TO DATE. PRIOR TO CARRYING OUT ANY EXCAVATION OR OTHER PHYSICAL WORK, CONTRACTORS SHALL OBTAIN THE LATEST INFORMATION FROM UTILITY PROVIDERS AND CARRY OUT DETAILED EXPLORATORY WORK, TRACING, SW LOCATING, PROTECTION, ISOLATION AND ALTERATIONS AS ARE REQUIRED UNDER NZS 3910 CLAUSE 5.13.

**QLDC INFRASTRUCTURE CODE PART 4**

- STANDARD DRAWINGS REFERENCED :
- B5-8 KERB AND DISH CHANNEL (PROFILES)
  - B5-22 HEAVY DUTY FOOTPATH (CONCRETE)
  - B5-23 FOOTPATH - ASPHALT AND GRITTED DETAILS

**SITE 4**

**LAKE HAYES ESTATE - ERSKINE STREET**



**NOT FOR CONSTRUCTION**

REV	DESCRIPTION	DATE	BY	CHK	APP
0	FOR TENDER		PJC	IB	
D	DETAILED DESIGN - LAYOUT AMENDED	07/21	PJC	IB	
C	DETAILED DESIGN	05/21	PJC	IB	
B	CLIENT REVIEW	03/21	PJC	WB	
A	PRELIMINARY DESIGN	01/21	PJC	WB	
	REVISIONS		DRN	CHK	APP

STATUS	DATE	BY
SURVEYED		
DESIGNED		
DRAWN	01/21	Phillip J Cook
CAD REVIEW	11/11/21	Phillip Cook
DESIGN CHECK	11/11/21	Wendy Banks
DESIGN REVIEW		Iain Banks
APPROVED	09/12/21	Alli Siddiqui
PROF REGISTRATION:		



QUEENSTOWN LAKES DISTRICT COUNCIL  
MODE SHIFT PT MINOR IMPROVEMENTS TRANCHE 2

LAKE HAYES ESTATE - SITE F ERSKINE STREET  
LAYOUT PLAN

Status Stamp	<b>FOR TENDER</b>
Date Stamp	<b>09.12.21</b>
Scale	1 : 250
Drawing No.	310204458-T2-004-C033
Rev.	0