

Notes
 Computer model built from 1m surveyed contours for large area of site & 20m contours for surrounding terrain. Visibility model run at 150m intervals along Cardrona Valley Road at 1.5m above terrain model.
 Survey contours supplied by Clarka Fortune McDonald & Associates.
 20m Contours sourced from NZTopo Database - Crown Copyright Reserved.

Mount Cardrona Visibility Sample Points Overview Sheet Index

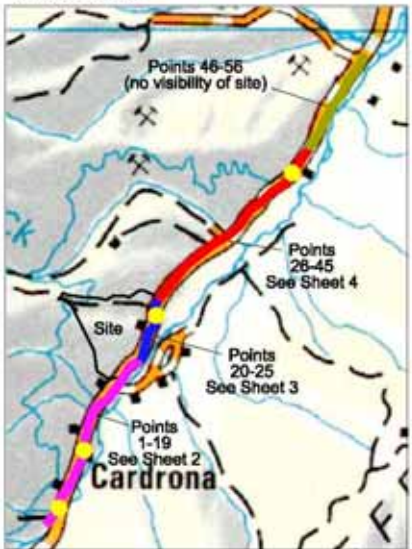


Figure 4 - Mount Cardrona Visibility Analysis
 INDICATIVE INTERVISIBILITY ANALYSIS - SHEET 1
 ALL POINTS 1 to 56

Scale: 1:2,500 (A1) 1:5,000 (A3) | Date: 7 April 2006
 Tel: 64 3 366 8691 | Contact: gary.white@boffamiskell.co.nz
 Christchurch Office © Boffa Miskell Limited 2006
 UniversalDoc2006_DW_MountCardrona_InterVisCAD00099_001_of_01.dwg

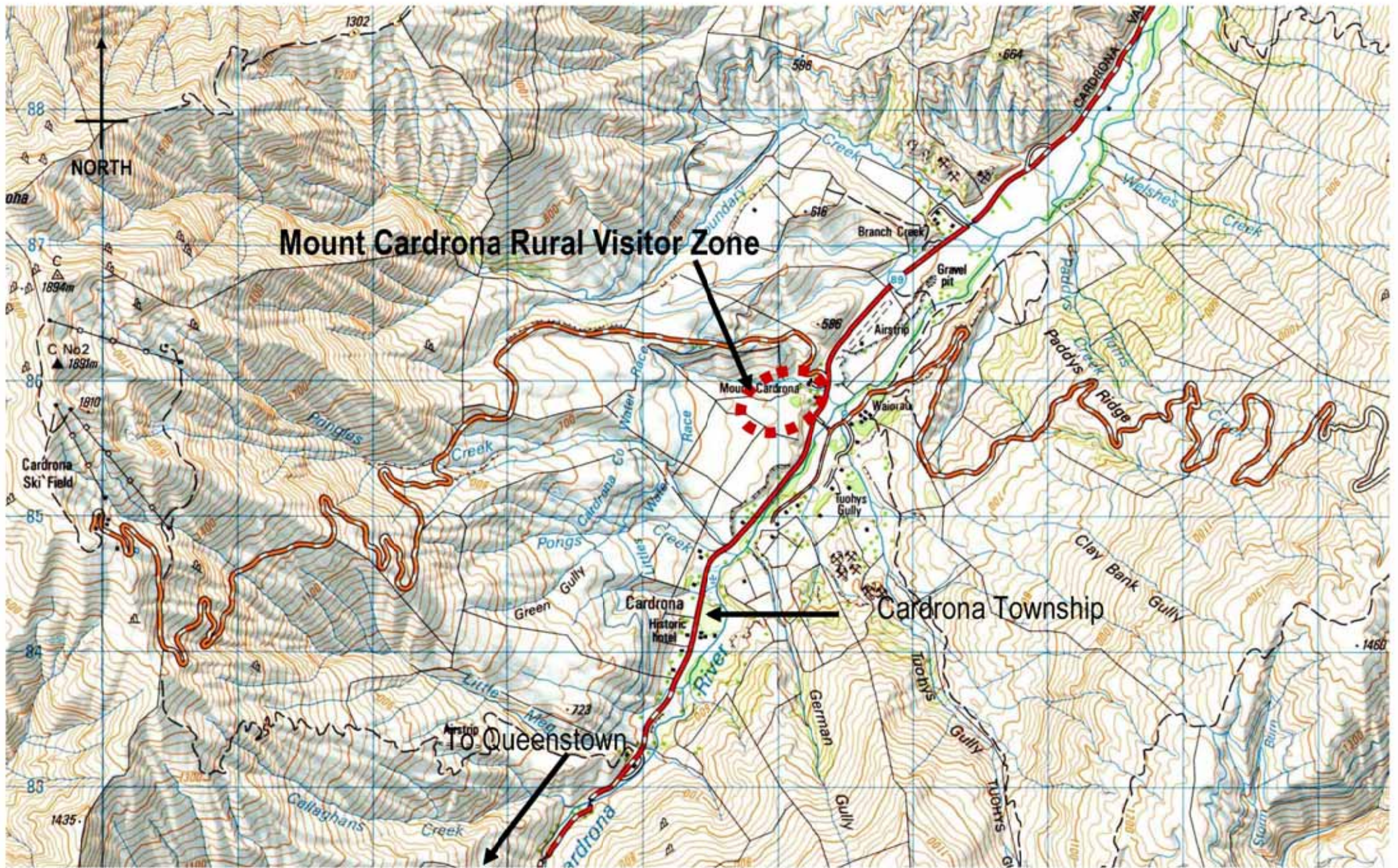
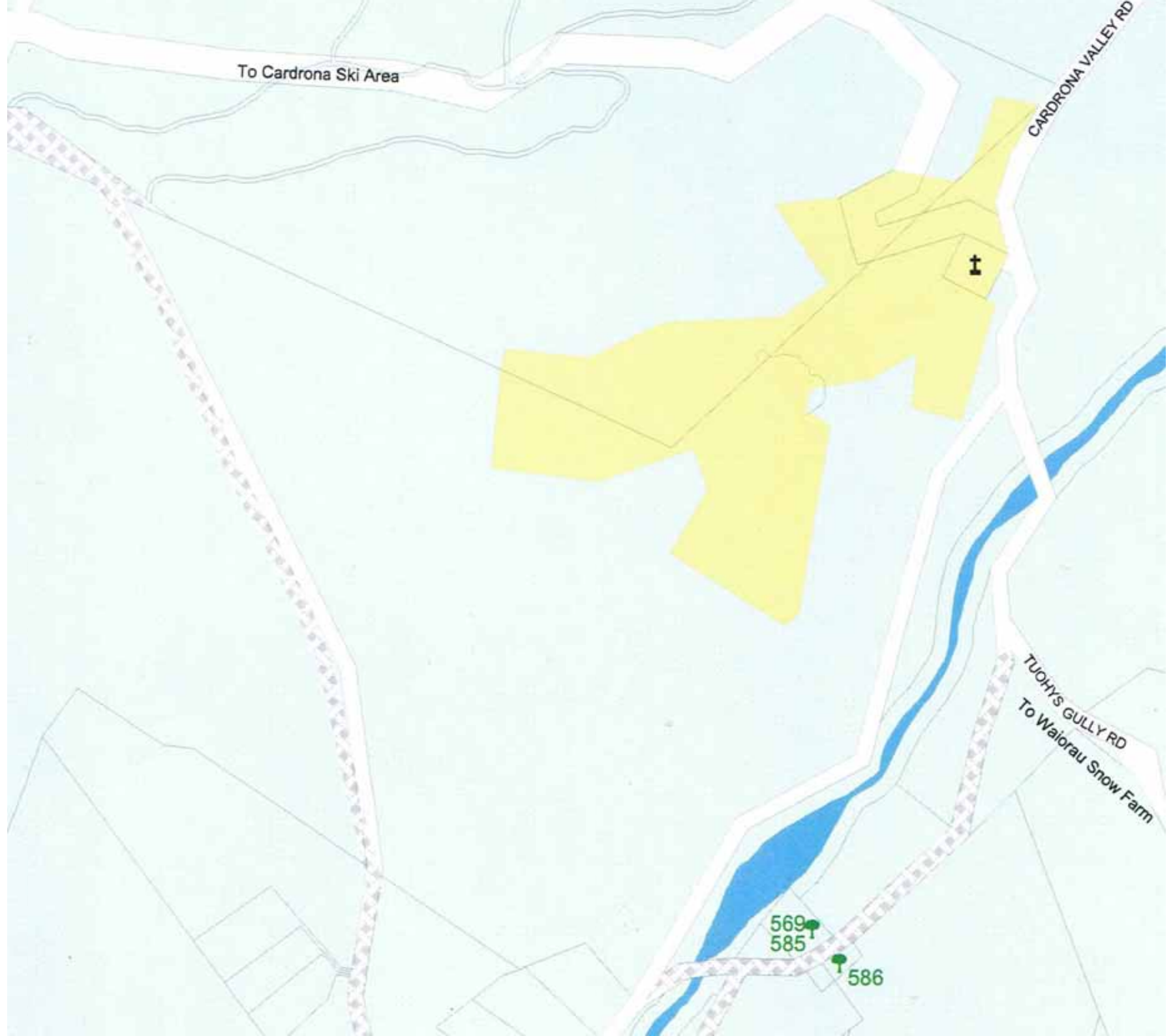


Figure 5: Site Location Plan



To Cardrona Ski Area

CARDRONA VALLEY RD

i

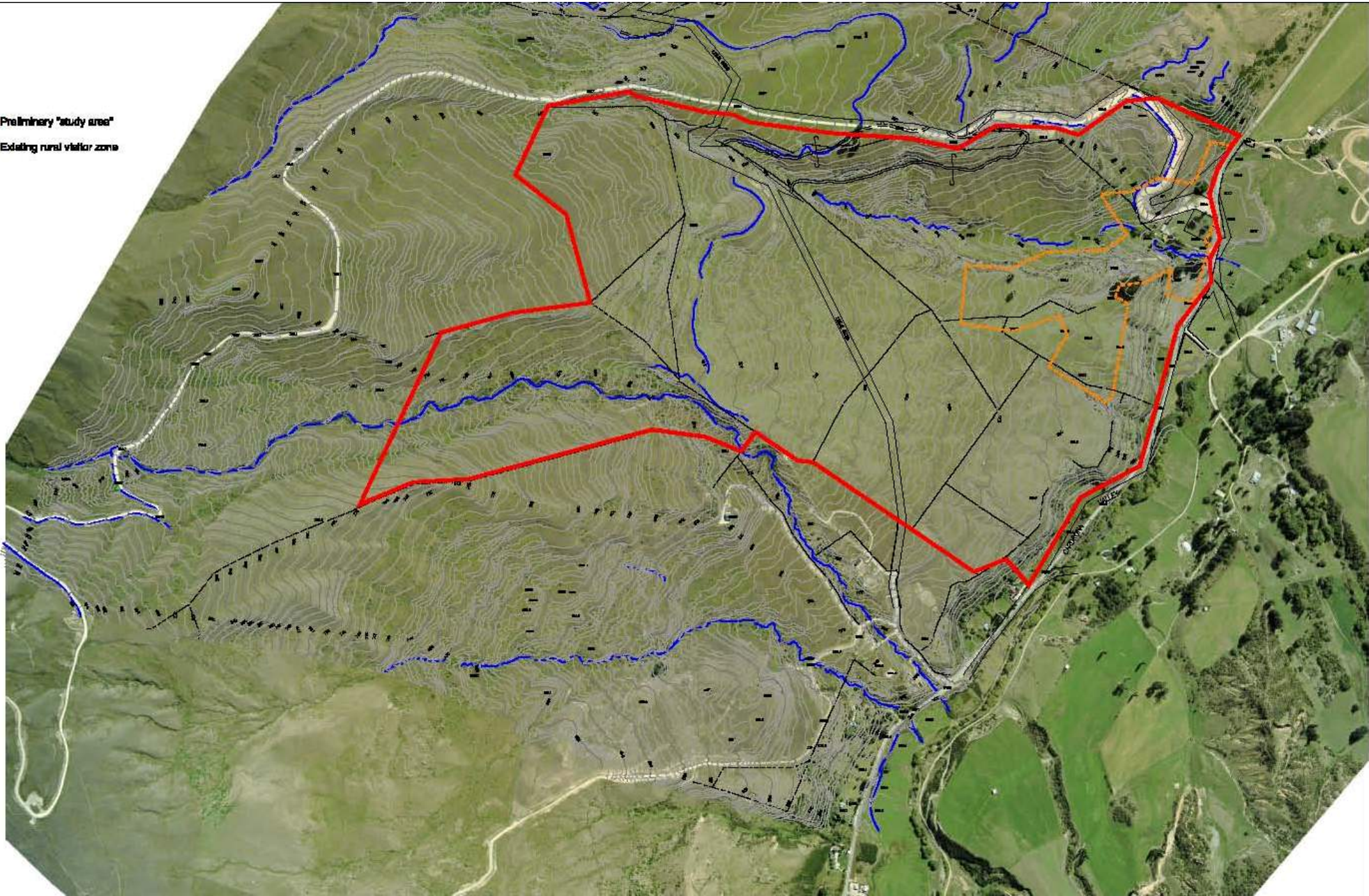
TUOHYS GULLY RD
To Waiorau Snow Farm

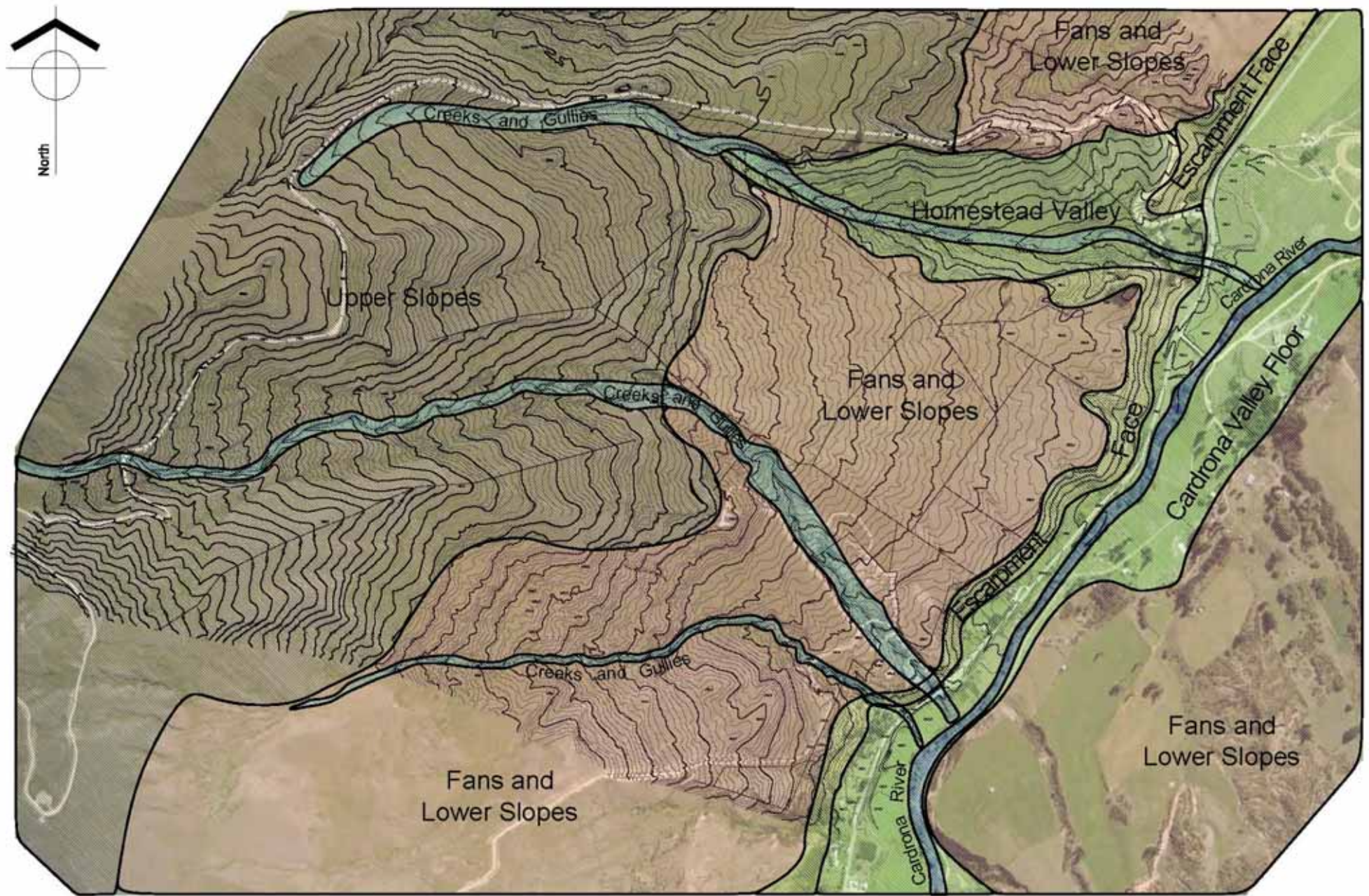
569
585

586

Key

- Preliminary "study area"**
- Existing rural visitor zone**





Mount Cardrona Station: Figure 8 Landscape Components of the study area

27th Feb 2006, Scale 1:10000 @ A3

	KIDSON LANDSCAPE CONSULTING landscape planning and design	tel: 03-4510073
		fax: 03-4510078
		cell: 0275123655
		email: kidson@kic.co.nz
		po box 1759, Queensdown, NZ