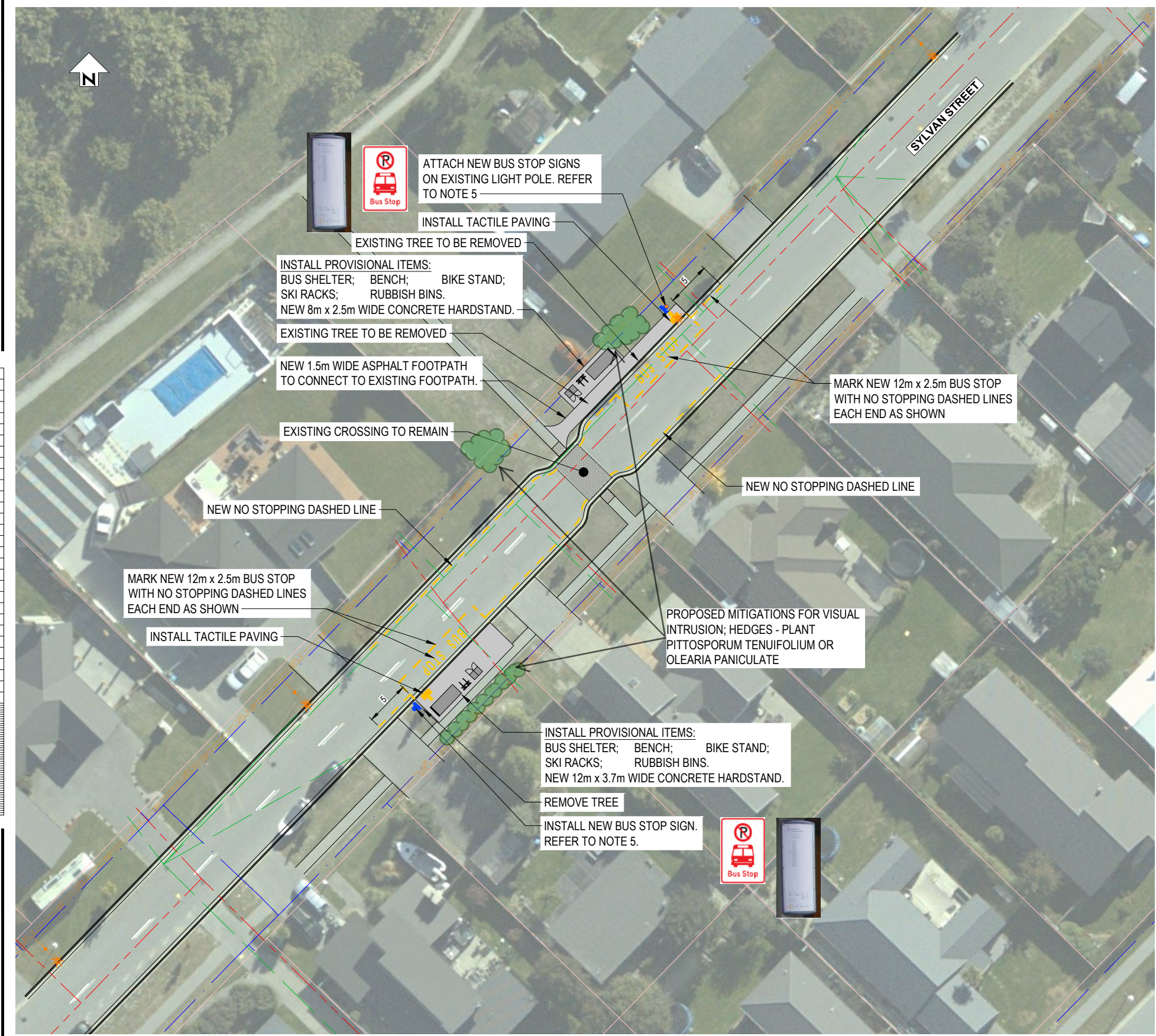


DO NOT SCALE - IF IN DOUBT, ASK

200mm  
150  
100  
90  
80  
70  
60  
50  
40  
30  
20  
10  
0

ORIGINAL SIZE A1

Last modified: Jan 19 2021 By Phillip Cook



**SITE 3**  
LAKE HAYES ESTATE - SYLVAN STREET



- NOTES**
- CONTRACTOR TO SUPPLY, FABRICATE AND INSTALL NEW QLDC STANDARD BUS SHELTER WITH SKI RACK ACCESSORY FROM CAM NZ OR APPROVED EQUIVALENT.
  - REFER TO OPUS DRAWING 6-XQ081.01-C05 FOR BUS SHELTER DETAILS AND SPECIFICATIONS, DRAWING 6-XQ081.01-C06 FOR BUS SHELTER STANDARD SLAB DETAILS AND 6-XQ081.01-C07 FOR STANDARD BIKE RACK DETAILS.
  - ALL CONSTRUCTION ELEMENTS ARE TO BE IN ACCORDANCE WITH QLDC STANDARD DETAILS, REFER TO LIST ABOVE.
  - ALL TRAFFIC SIGNS AND ROAD MARKINGS TO BE IN ACCORDANCE WITH MOTSAM/TCO.
  - BUS STOP SIGN SUPPLIERS:
    - RP-5 BUS STOP AND POST TO BE SUPPLIED BY CONTRACTOR.
    - TIMETABLE TO BE SUPPLIED BY ORC.
    - SWIVEL BOARD TO BE SUPPLIED BY QLDC.
  - TREES TO BE TRIMMED TO ALLOW FOOTPATH CONSTRUCTION.
- SERVICES DISCLAIMER**
- PIPES, CABLES AND OTHER UTILITIES, FOUNDATIONS, LEVELS, REFERENCE MARKS AND OTHER OBSTRUCTIONS INDICATED ON THIS DRAWING ARE BASED ONLY ON READILY AVAILABLE RECORD PLANS AND OTHER INFORMATION. THIS INFORMATION MAY NOT BE COMPLETE, ACCURATE NOR UP TO DATE. PRIOR TO CARRYING OUT ANY EXCAVATION OR OTHER PHYSICAL WORK, CONTRACTORS SHALL OBTAIN THE LATEST INFORMATION FROM UTILITY PROVIDERS AND CARRY OUT DETAILED EXPLORATORY WORK, TRACING, SW LOCATING, PROTECTION, ISOLATION AND ALTERATIONS AS ARE REQUIRED UNDER NZS 3910 CLAUSE 5.13.
- QLDC INFRASTRUCTURE CODE PART 4**  
STANDARD DRAWINGS REFERENCED :
- B5-8 KERB AND DISH CHANNEL (PROFILES)
  - B5-22 HEAVY DUTY FOOTPATH (CONCRETE)
  - B5-23 FOOTPATH - ASPHALT AND GRITTED DETAILS

**NOT FOR CONSTRUCTION**

REV	DESCRIPTION	DRN	CHK	APP	DATE
C	DETAILED DESIGN	PJC	IB		05/21
B	CLIENT REVIEW	PJC	WB		03/21
A	PRELIMINARY DESIGN	PJC	WB		01/21
		DRN	CHK	APP	DATE

SURVEYED		
DESIGNED		
DRAWN	Phillip J Cook	01/21
CAD REVIEW		
DESIGN CHECK		
DESIGN REVIEW		
APPROVED	<b>NOT APPROVED</b>	
PROF REGISTRATION:		



QUEENSTOWN LAKES DISTRICT COUNCIL  
MODE SHIFT PT MINOR IMPROVEMENTS TRANCHE 2

LAKE HAYES ESTATE - SITE C SYLVAN STREET  
LAYOUT PLAN

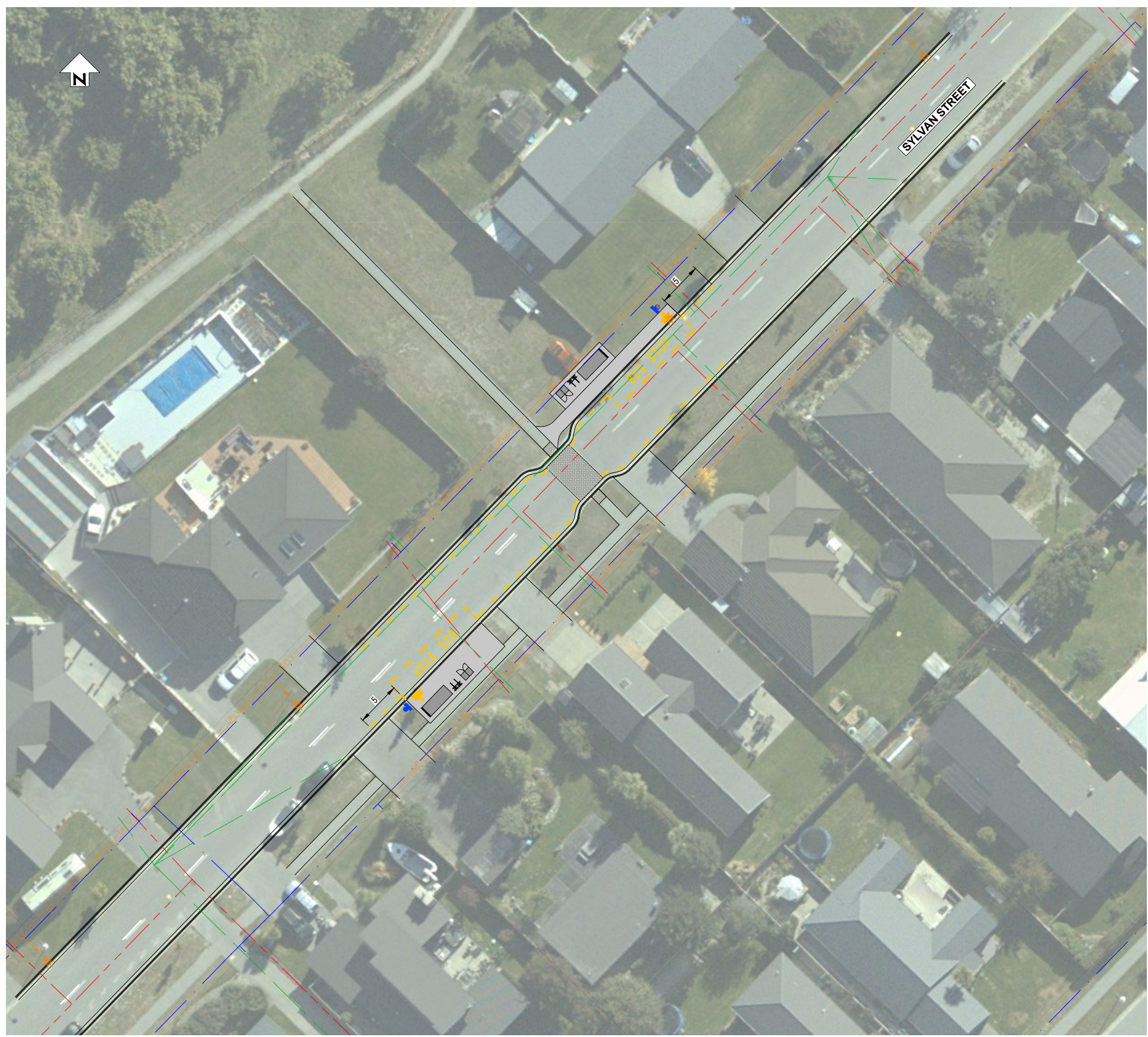
Status Stamp	<b>FOR REVIEW</b>
Date Stamp	<b>04.05.21</b>
Scales	1 : 250
Drawing No.	310204458-T2-003-C021
Rev.	<b>C</b>

DO NOT SCALE - IF IN DOUBT, ASK

200 mm  
150  
100  
90  
80  
70  
60  
50  
40  
30  
20  
10  
0

ORIGINAL SIZE A1

Last modified: Jan 19 2021 By Phillip Cook



LEGEND	
	STORMWATER
	SANITARY SEWER
	WATER
	FIRE HYDRANT
	COMMUNICATION
	POWER - HV
	POWER - LV
	POWER - LV
	POWERPOLE
	STREET LIGHT
	TRANSFORMER / SWITCH
	POWER PILLAR

**WARNING**  
BEWARE OF UNDERGROUND SERVICES  
THE LOCATIONS OF UNDERGROUND SERVICES ARE APPROXIMATE ONLY AND THEIR EXACT POSITION SHOULD BE PROVEN ON SITE NO GUARANTEE IS GIVEN THAT ALL EXISTING SERVICES ARE SHOWN.

**DIAL BEFORE YOU DIG**

**SITE 3**  
**LAKE HAYES ESTATE - SYLVAN STREET**



**NOT FOR CONSTRUCTION**

REV	DESCRIPTION	DATE	APP	CHK	DRN
C	DETAILED DESIGN	05/21	PJC	IB	
B	CLIENT REVIEW	03/21	PJC	WB	
A	PRELIMINARY DESIGN	01/21	PJC	WB	
	REVISIONS				

SURVEYED		
DESIGNED		
DRAWN	Phillip J Cook	01/21
CAD REVIEW		
DESIGN CHECK		
DESIGN REVIEW		
APPROVED	<b>NOT APPROVED</b>	
PROF REGISTRATION:		



QUEENSTOWN LAKES DISTRICT COUNCIL  
MODE SHIFT PT MINOR IMPROVEMENTS TRANCHE 2  
LAKE HAYES ESTATE - SITE C SYLVAN STREET  
SERVICES PLAN

Status Stamp	<b>FOR REVIEW</b>
Date Stamp	<b>04.05.21</b>
Scales	1 : 250
Drawing No.	310204458-T2-003-C022
Rev.	<b>C</b>