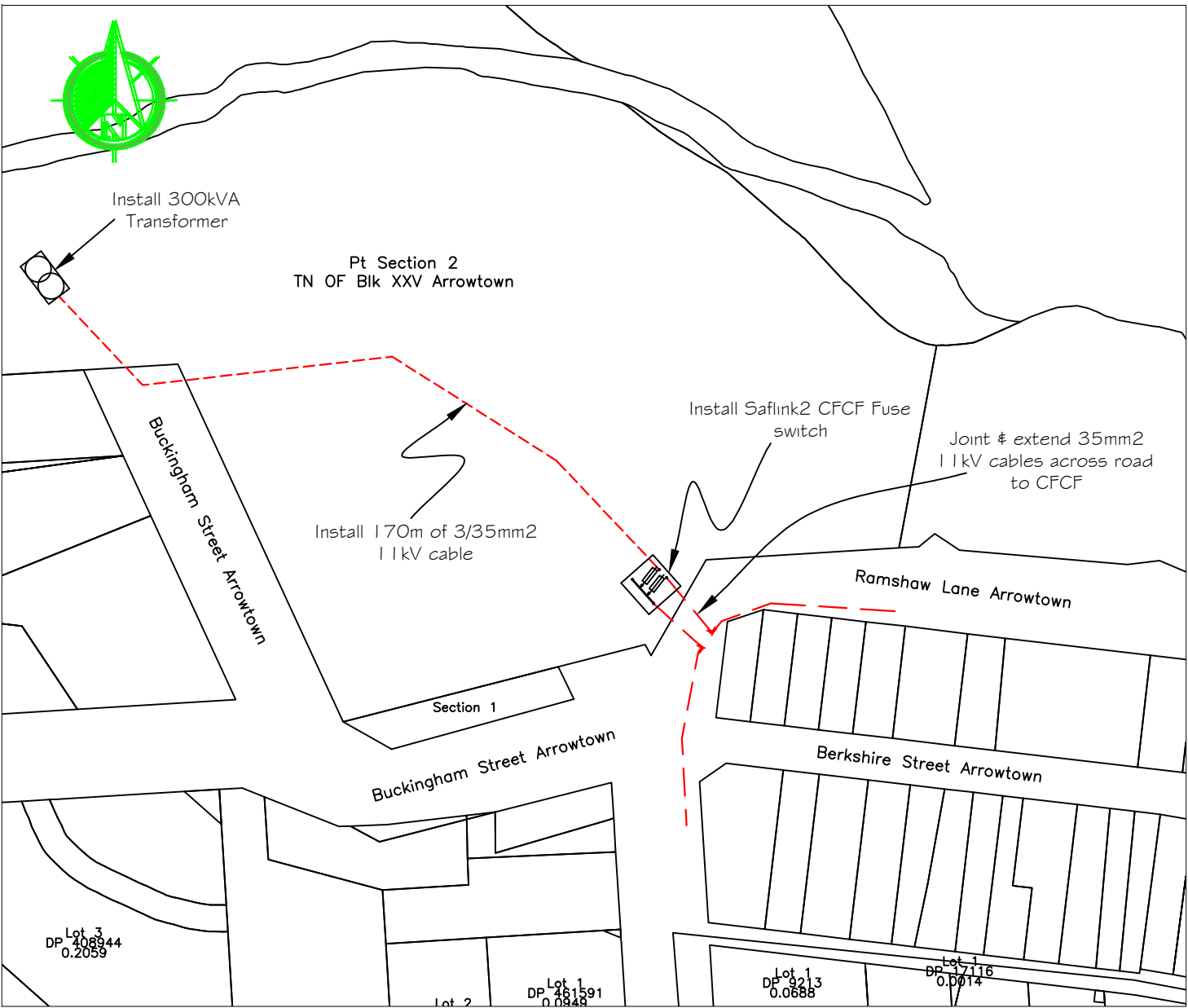
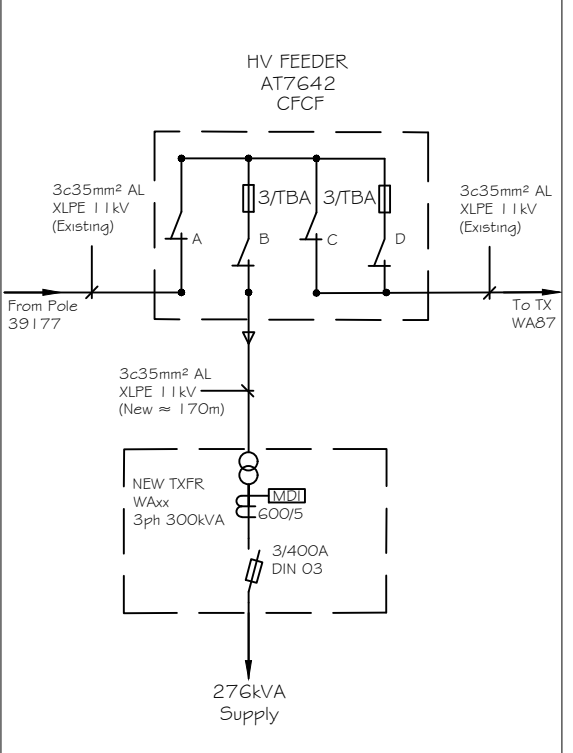


ATTACHMENT A

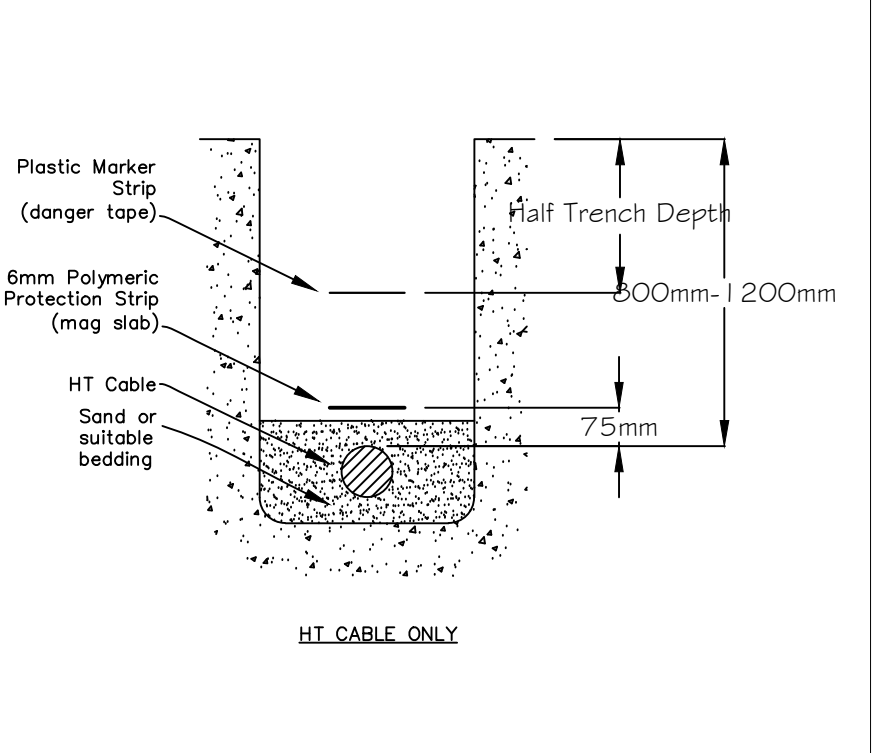
SITE LAYOUT SCALE NTS A3



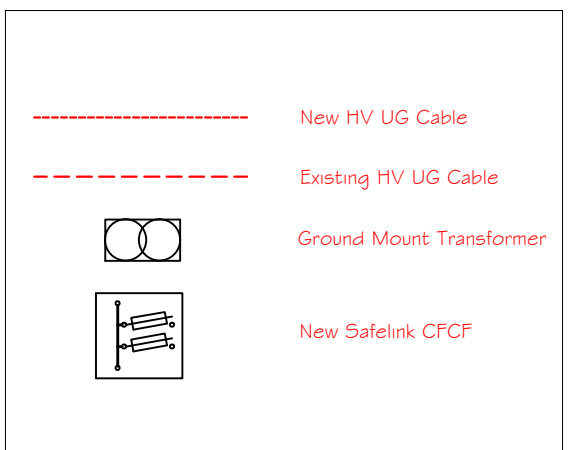
SINGLE LINE DIAGRAM



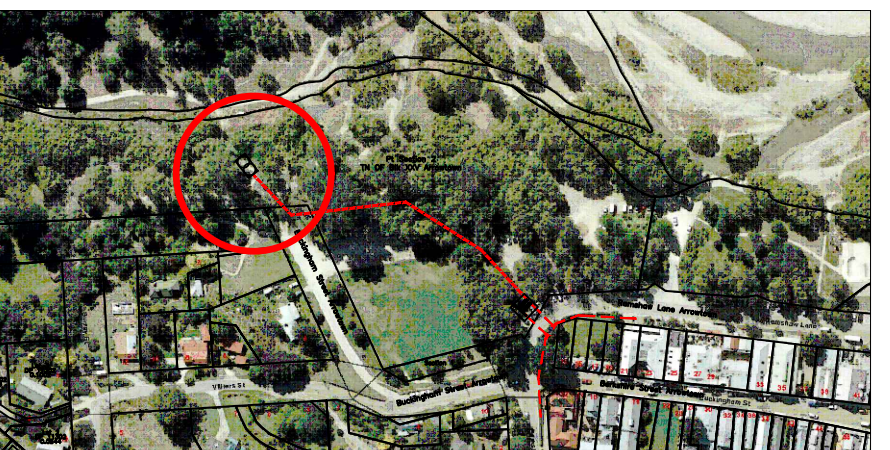
TRENCH PROFILE



LEGEND



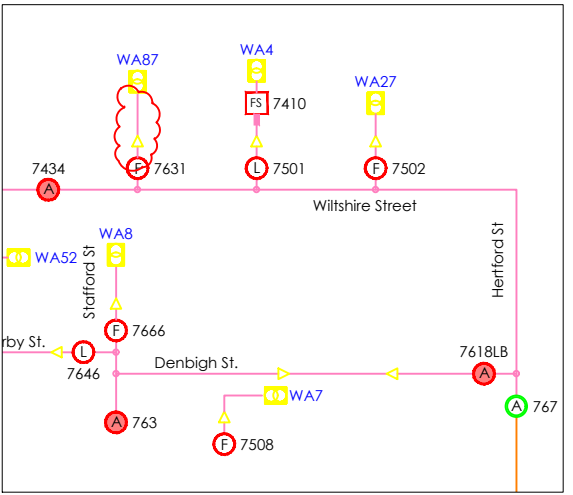
LOCATION



Work Scope

- Break into the existing 11kV cable on Ramshaw Lane and joint two tails across the road to the new switch.
- Install Safelink 2 CFCF onto blast chamber.
- Install 170m of 3/35mm² XLPE 11kV cable.
- Install a 300kVA MiniPad transformer fused at 400A.
- Upgrade the existing DO Fuses on Pole 39177 to 40A

HV Schematic



Material List

| Item | Type | Quantity |
|------|---|----------|
| 1 | 300kVA MiniSub Fitted with 600/5 CT's & MDI's | 1 |
| 2 | Safelink 2 CFCF | 1 |
| 3 | 3/35mm² 11kV XLPE Cable | 170m |
| 4 | Miscellaneous: | As Req'd |

| Rev. | Description | Dm | Ckd | Date | References | Job number | Drawing No. | CFR | Job Package | Scale | Sheet | Rev. |
|------|--------------------|----|-----|------|------------|--|-------------|-----|-------------|-------|-------|------|
| A | Original Issue | DD | | | | QLDC - Arrowtown Water Supply Upgrades | TW7084 | | - | 152 | NTS | B |
| B | Change CFC to CFCF | DD | | | | Feeder: AT7642 | | | - | | A3 | |
| | | | | | | Address: Ramshaw Lane Arrowtown | | | | | | |
| | | | | | | | | | | | | |
| | | | | | | | | | | | | |



ATTACHMENT B

Optional features



Outdoor enclosure

The outdoor enclosure to suit the SafeLink 2 attaches to the ring main unit. It is padlockable and no special tools are required for its installation. Once installed all critical fixings are hidden. For access to the SafeLink 2 unit, the top lifts up, and the door is hinged.

The enclosure can be supplied in a flat-pack form for retrofitting or fully assembled. Full instructions for assembly and mounting are supplied with each enclosure.

| Dimensions | | | | |
|---------------|----|------------------|------------------|------|
| Configuration | | CFC, CCC, DF, DC | CFCC, CCCC, CFCD | CFCF |
| Height | mm | 1380 | 1380 | 1380 |
| Width | mm | 810 | 1015 | 1235 |
| Depth | mm | 838 | 838 | 838 |
| Weight | kg | 94 | 106 | 122 |

Concrete pad

SafeLink should be mounted on a concrete base designed to support the equipment weight of the switchgear and for the outdoor enclosure if used. The base pad shall be mounted on a prepared and compacted base.

The units are fastened to the concrete base by four M10 bolts. Ensure that there is free air movement around the stand and prevent build up of material (vegetation, bark, etc.) around the base of the stand.

ABB is able to supply a suitable concrete base as an optional item. The concrete pads have a removable section to improve access for connecting cables. The pad is designed for seismic loads up to 1g.



| Dimensions | | | | |
|---------------|----|------------------|------------------|------|
| Configuration | | CFC, CCC, DF, DC | CFCC, CCCC, CFCD | CFCF |
| Height | mm | 150 | 150 | 150 |
| Width | mm | 945 | 1155 | 1375 |
| Depth | mm | 850 | 850 | 850 |
| Weight | kg | 210 | 260 | 325 |