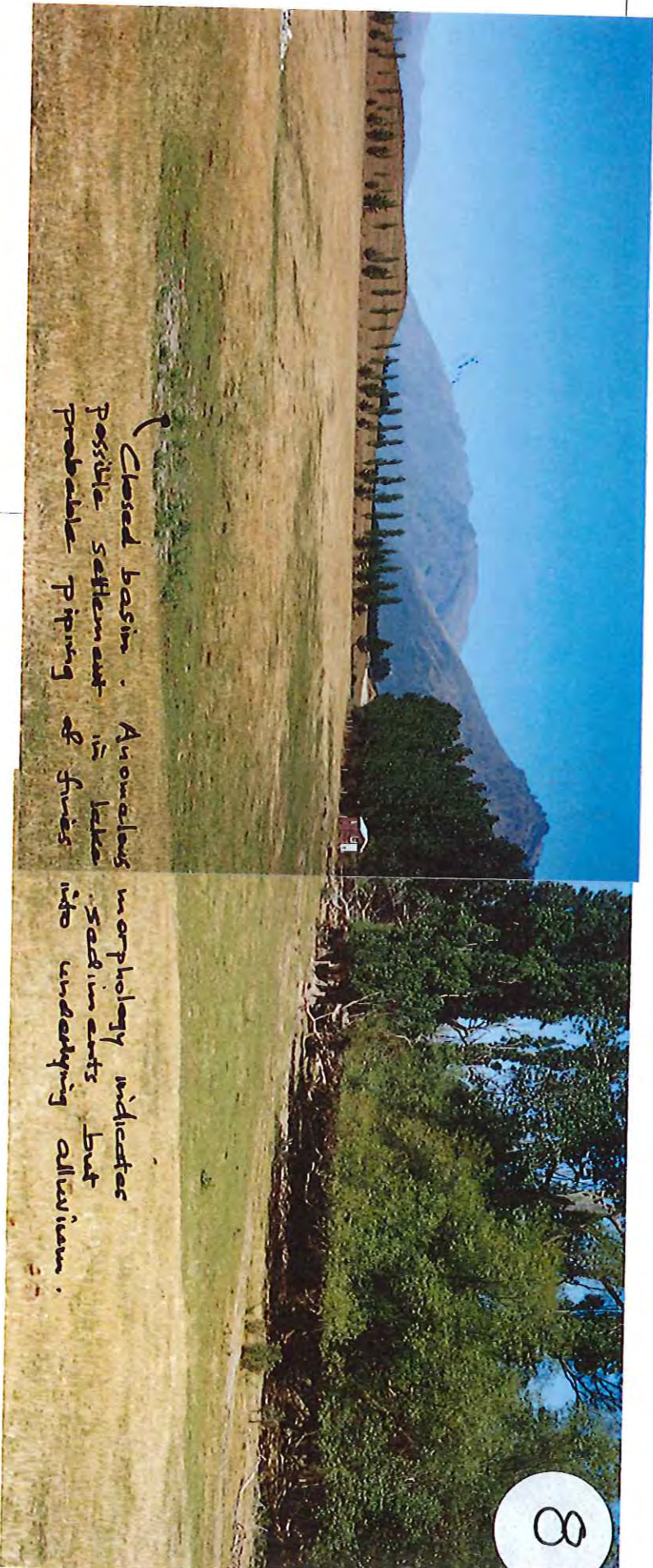
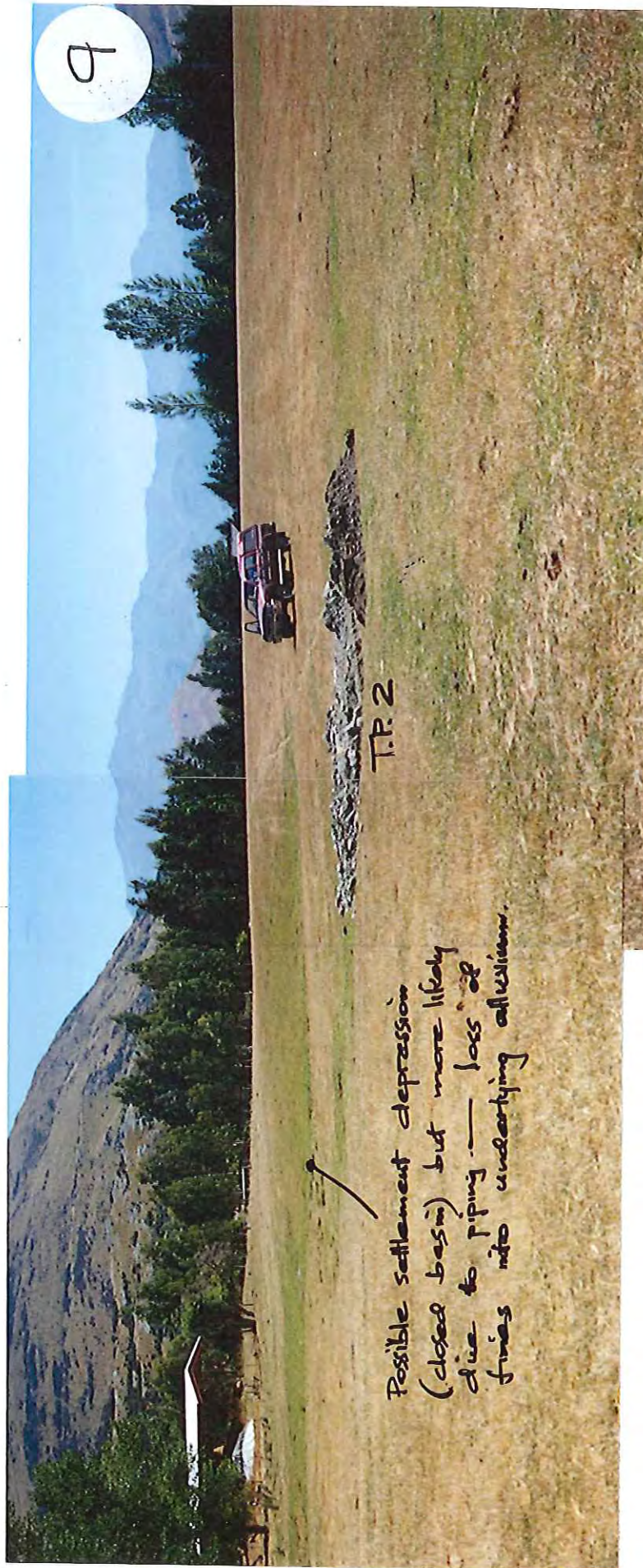


Fold Out

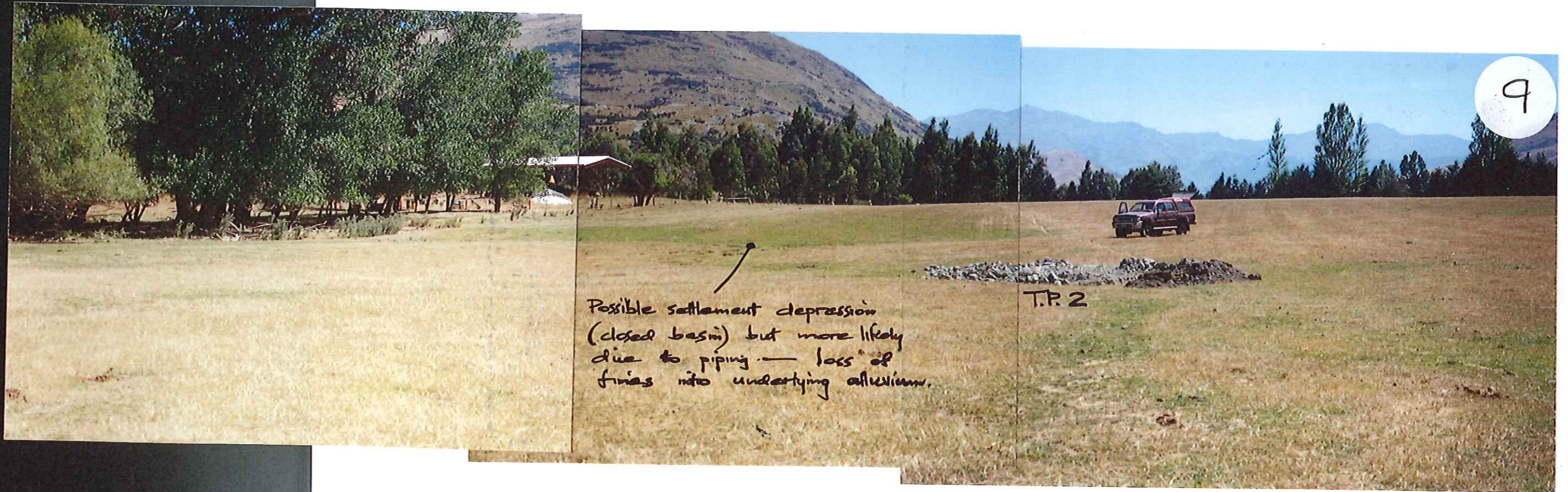


Closed basin. Anomalous
possible settlement in lake.
Probable piping of fines

morphology indicates
sodic soils but
into underlying alluvium.



Fold Out



Possible settlement depression
(closed basin) but more likely
due to piping — loss of
finer into underlying alluvium.

T.P. 2

9



Beach

Depression formed
behind storm beach

Beach

Schüt outcrop

Top level of
lake (beach remnant)

T.P. 3

10

