

30 May 2018

Universal Investments Hawea LP

Dear Tim,

RE: Proposed Hawea Universal Developments Special Housing Area – Ecological Review

1.0 Introduction

On the 25th May 2018, e3Scientific Ltd (e3s) walked over the proposed 34-hectare SHA site just outside of Hawea, accessed from Cemetery Road (see Figure 1). The site was dominated by exotic pasture grasses and clover, and mature exotic conifer trees and hedgerows.

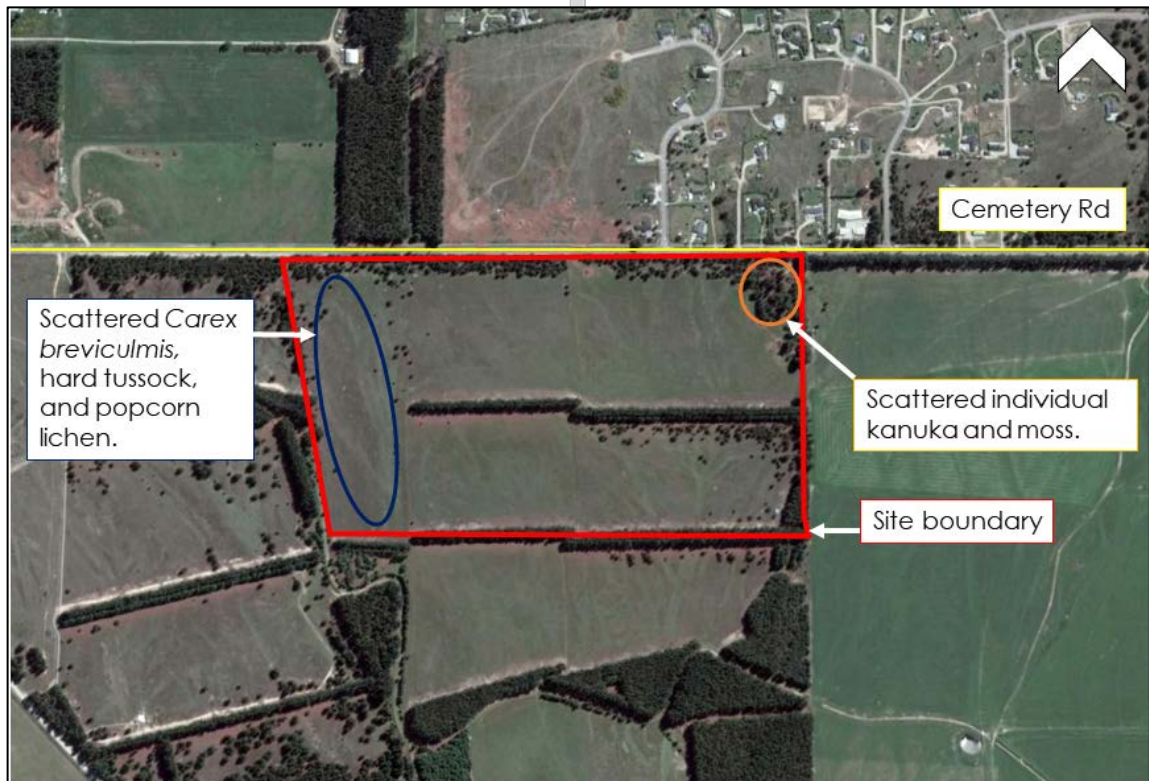


Figure 1: Site Location and distribution of indigenous plants observed on site.

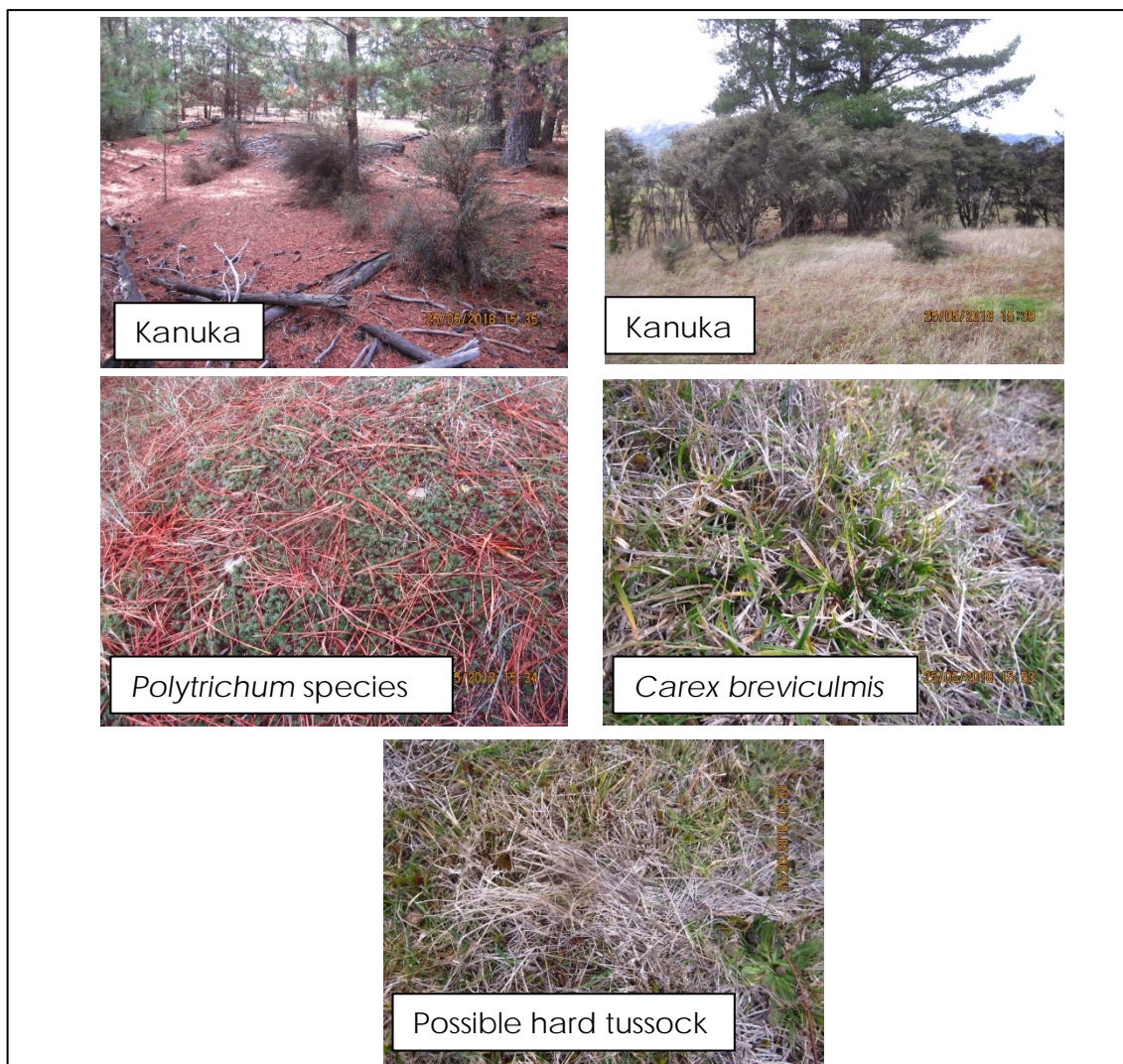


Plate 1: Photographs of the native plants observed on site.

Given the small number of native plants remaining, and their isolated and scattered nature, they do not constitute 'indigenous vegetation' under the Operative and Proposed District Plan definitions. The native plants on site are too isolated and scattered to constitute a 'community' or native 'vegetation', nor are they 'important in terms of coverage, structure and/or species diversity'.

If you have any further questions, please contact Glenn Davis on 03 409 8664

Yours sincerely,

Glenn Davis
Principal Environment Scientist