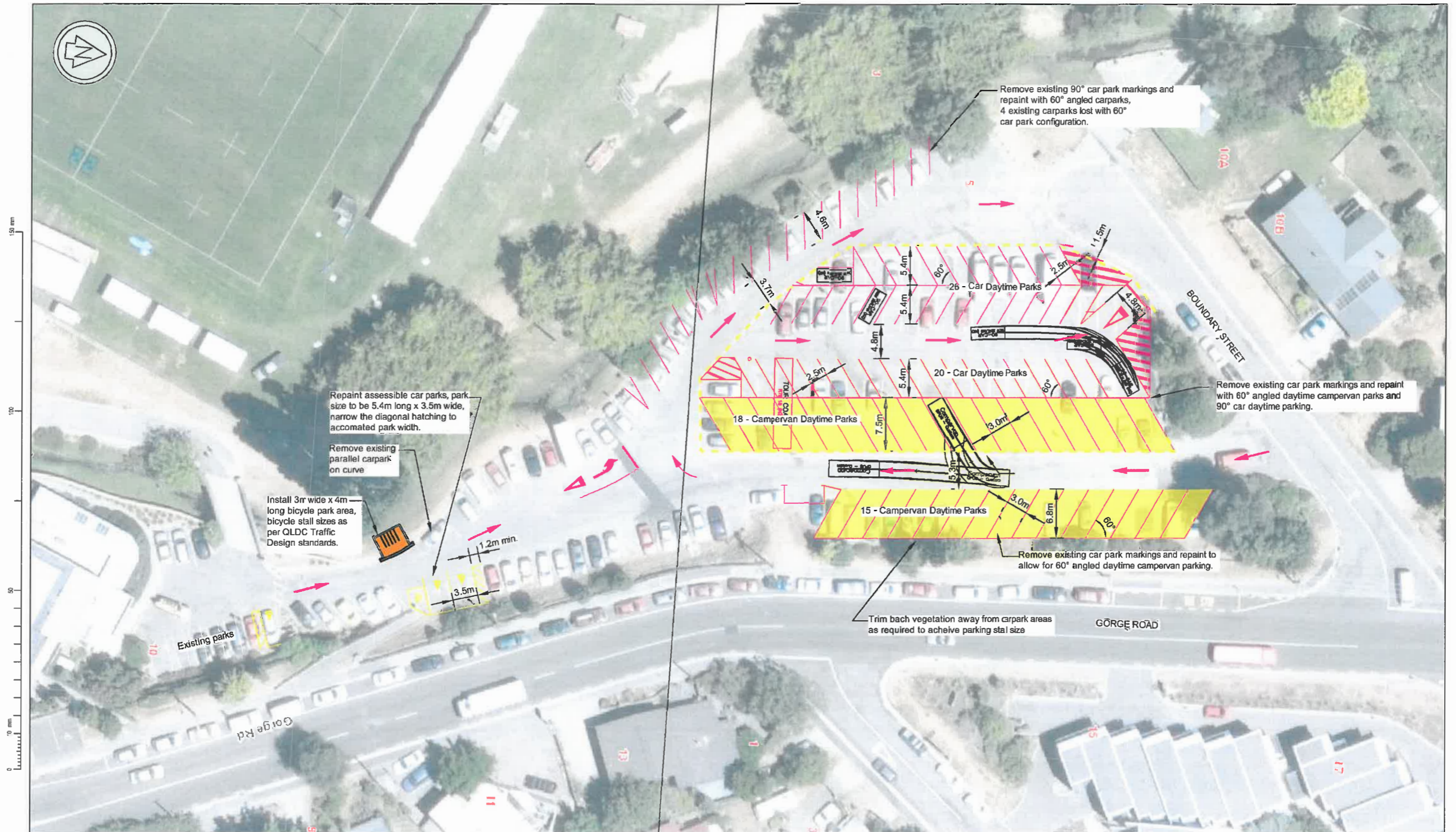
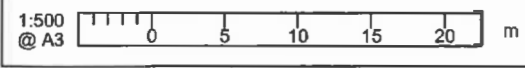


Attachment C: Design Options for Boundary Street Campervan Parking



LEGEND

- Campervan Day Time Parks
- Bus Night Time Parks



| Revision | Amendment | Approved | Revision Date |
|----------|-------------------------------------------------|----------|---------------|
| RA | Drawn issued for Review | | |
| RB | Revised option after review from D. Mander QLDC | | |
| RC | Revised option after review from A. Timms QLDC | | |
| | | | |
| | | | |
| | | | |
| | | | |



PO Box 273
Alexandra 9340
New Zealand

| | | |
|-----------------------------|----------------------------------------|---------------|
| Designed Bede Mulholland | Approved <i>[Signature]</i> 4/16 | Approved Date |
| Drawn Bede Mulholland | Scale 1:500(A3) | |

PRELIMINARY

Project
QUEENSTOWN LAKES DISTRICT COUNCIL
BOUNDARY STREET
BOUNDARY STREET CAR PARK MULTI-USE CONCEPTS

Sheet
OPTION 3B - LAYOUT PLAN

Project No.
6-XQ030.00(555GX)

Sheet No.
004

Revision
RC