

# WATERWAY PESTS

- Lagarosiphon** is a weed found in several Otago lakes and rivers - Wanaka, Dunstan and Clutha.
- Didymo** is a microscopic alga currently present in the Von River, Hawea River, Clutha River and Lake Dunstan.
- Don't move items between waterways:**
  - Check** For weed or clumps of debris on equipment and trailers.
  - Clean** All items should be washed and soaked in dishwashing detergent for at least one minute.
  - Dry** Dry items until touch dry before entering another waterway.

# FISHING

- Licence required.
- Lakes Wanaka and Hawea are open all year.
- For further details see Fish and Game Guide for Wanaka.



# CAUTION

## THE RIGHT-HAND RULE APPLIES ON ALL RIVERS FIVE KNOT AREAS

- Clutha River**
- Area 1] From Lake Wanaka outlet for 3 kilometres downstream, which is marked by yellow poles on the shore and a yellow buoy. The speed limit is 5 knots.
  - Area 2] The section of river from the yellow poles and a yellow buoy downstream to the Council's boundary which is approximately 3 kilometres below the red Luggate Bridge, the speed limit is 5 knots except as detailed below. Between the hours of 10am and 4pm and during daylight saving 10am and 6pm, the 5 knot speed limit is uplifted.
  - Area 3] The river channel on the true right of the river adjacent to Albert Town the speed limit is 5 knots. This area is marked by yellow marker buoys upstream and downstream of the island.

**Hawea River**  
The 5 knot limit applies from the dam to the Clutha River.

**Lake Hawea**  
Keep clear of the dam intake, marked by buoys.  
*Any enquiries contact:*  
The Wanaka Service Centre: (03) 443-0024 or  
Harbourmaster: Queenstown (03) 442-3445  
Mobile 0274 345 289

There are bylaws in force as to the use of vessels on these waters. You should familiarise yourself with such bylaws before using any waters under the control of the Queenstown Lakes District Council.

**If in doubt – ASK  
EXTREME CARE IS NEEDED**

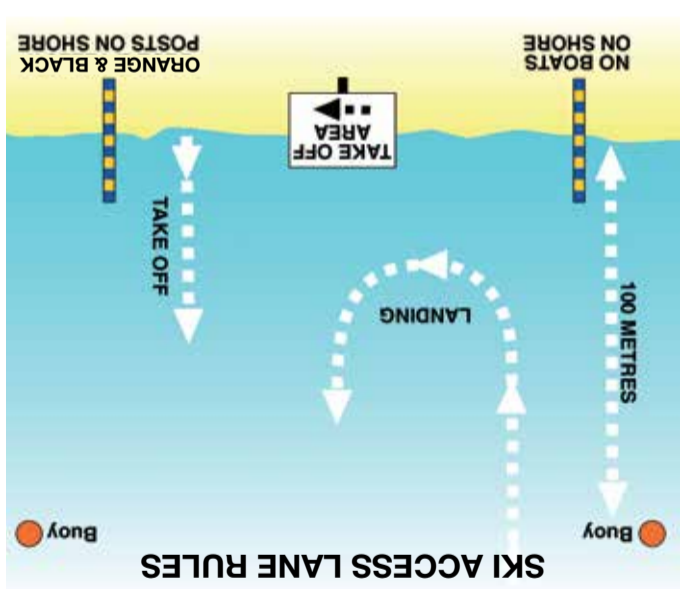
# BOATING GUIDE

## LAKES WANAKA & HAWEA



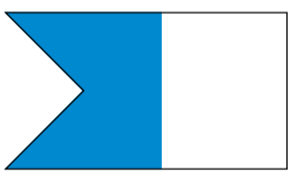
**POLLUTION HOTLINE 0800 800 033**  
TAKE YOUR RUBBISH HOME

# POLLUTION



- SKI ACCESS LANE MARKINGS**
- Access lanes enable powered craft (including jetskis) and waterskiers to legally leave or approach the shore at speeds in excess of 5 knots.
  - You must keep right in the lanes.
  - You must:
  - Enter and leave at right angles to the shore.
  - Have an observer (over 12 years) to report any mishap to the driver.
  - Not proceed in any manner dangerous to other persons or vessels in the lane.
  - Not beach your boat in the lane.
  - Not use the lane for any other purposes.
  - Proceed only in an anti-clockwise direction when using the lane (see illustration).
- SKI ACCESS LANE RULES**
- Buoy
  - TAKE OFF
  - TAKE OFF
  - LANDING
  - 100 METRES
  - NO BOATS ON SHORE
  - ORANGE & BLACK POSTS ON SHORE

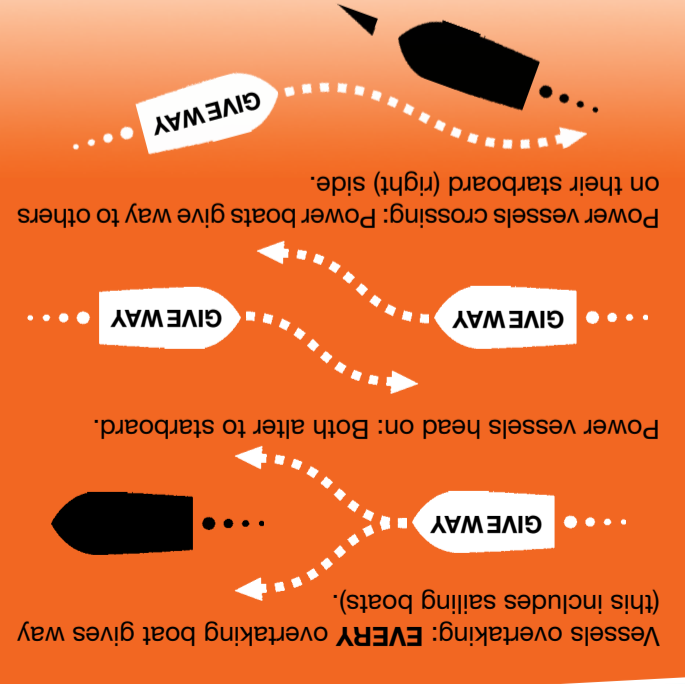
# WATER SKIERS



- Remember to DiveSafe.**
- The diver's flag means a diver is in the water.
  - Maintain 5 knots within 200 metres' distance from the flag.
  - Always dive with a buddy.
  - Get professional instruction.
  - Maintain your equipment.
  - Take a refresher course.

# DIVING

- Give way boats should cross behind.
- Always make a bold alteration as soon as possible.
- Keep 50 metres apart if speed is over 5 knots.
- Sailing boats have different rules.



# GIVE WAY RULES

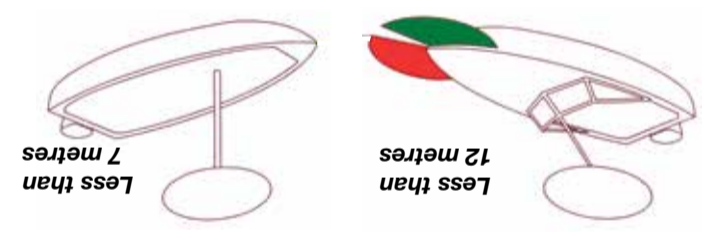
# NAVIGATION LIGHTS

- 90% of fatal accidents involve the Skipper not having enough boating knowledge and experience.
- All boats must travel at a safe speed, taking into account the amount of boat traffic in the area, weather conditions and when visibility is affected by glare.
- Specifically, you must not exceed a speed of 5 knots (a fast walking speed) if you are:
- Within 200 metres of the shore.
- Within 200 metres of a boat displaying a diver's flag.
- Within 50 metres of any other boat.
- Within 50 metres of a person swimming.
- On a power boat if any person has any part of their body outside the rails on the edge of the deck.
- You must be over the age of 15 to operate any power boat which is capable of speed exceeding 5 knots. This includes dinghies and personal water craft.
- All craft shall have an effective silencing device.
- Proper navigation lights to be displayed throughout the hours of darkness.
- Lifejackets must be carried to fit all persons on board.
- Boats 6 metres and under life jackets must be worn.

These are the navigation lights required on most power-driven vessels operating on lakes by night (sunset to sunrise). Refer to regulations for other vessels and the distances from which each light must be visible. Masthead lights on power-driven vessels of less than 12 metres shall be a minimum height of 0.91 metres above the side lights.

Less than 7 metres  
Less than 12 metres

Craft less than 12 metres can show an all-around masthead light and side lights. Craft less than 7 metres and not capable of speeds over 7 knots need only display an all-around white light.

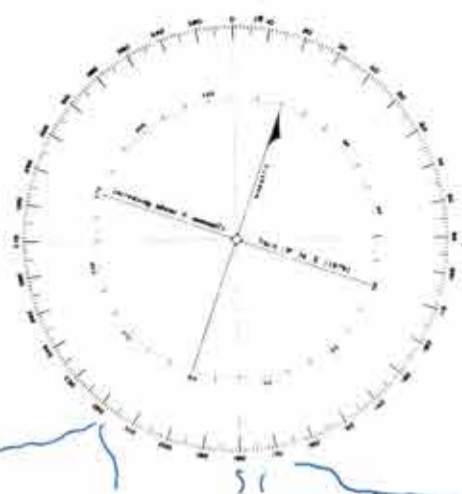


# BOATING GUIDE LAKES WANAKA & HAWEA

Covering 180 km<sup>2</sup>, Lake Wanaka is New Zealand's fourth largest lake. It is 45.5 km long and up to 300 m deep. Water temperatures range from 8.9°C to 10°C on average. Lake Hawea has an area of 149 km<sup>2</sup> and is 35 km long. Although narrow, this lake plunges to a depth of 389 m.

### Three Bewares:

1. Lake Hawea requires extra care being a hydro storage lake with an 8m operating range (346.0 - 338.0 mas). Objects/dangerous obstacles can be exposed, or lay just underwater, at any given lake level.
2. The lakes can become very rough, very quickly.
3. The lakes are subject to rapidly changing wind conditions.



## KEY

**SKI LANES**  
Waterfall Creek  
Eely Point  
Roys Bay  
Glendhu Bay

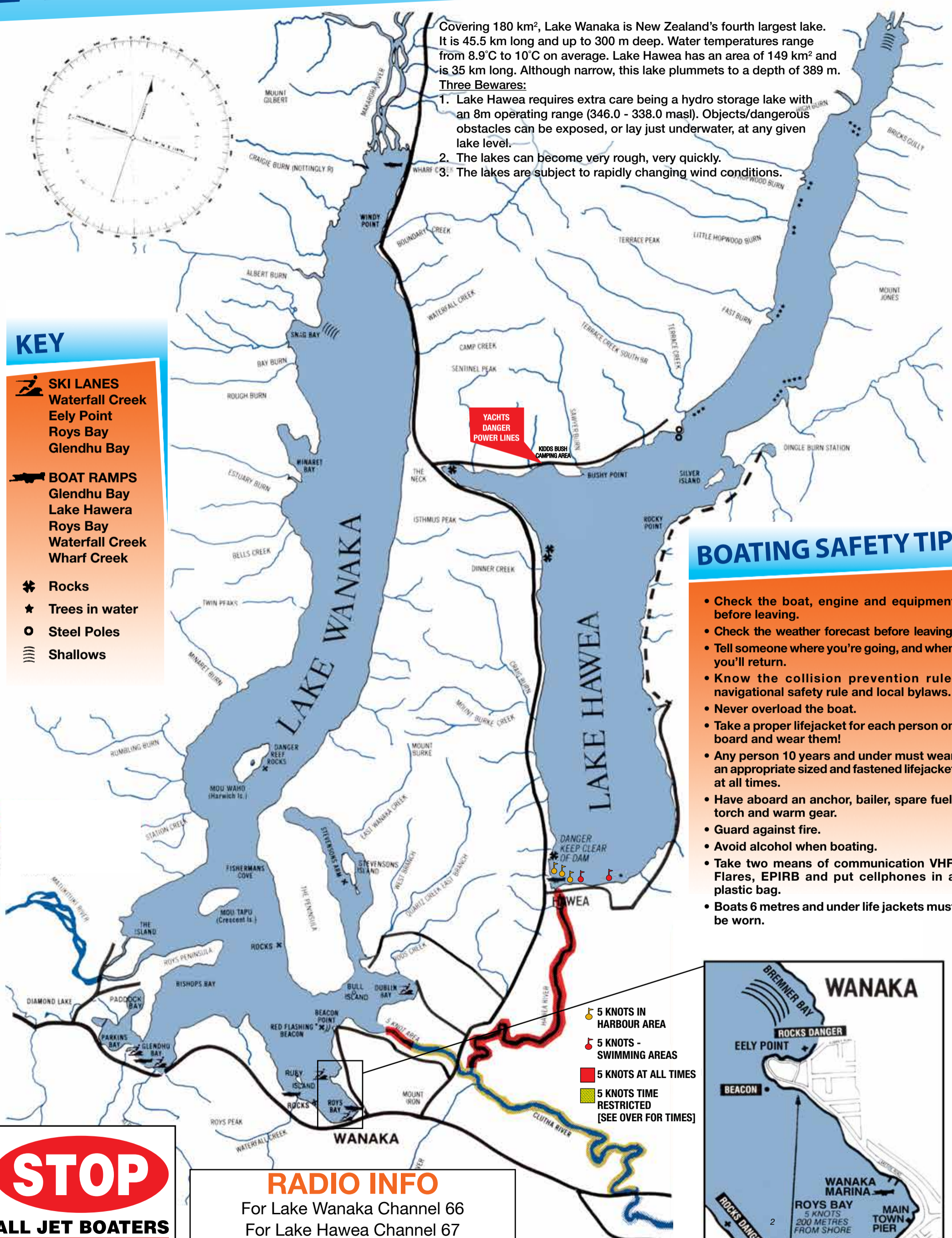
**BOAT RAMPS**  
Glendhu Bay  
Lake Hawera  
Roys Bay  
Waterfall Creek  
Wharf Creek

**Rocks**  
**Trees in water**  
**Steel Poles**  
**Shallows**

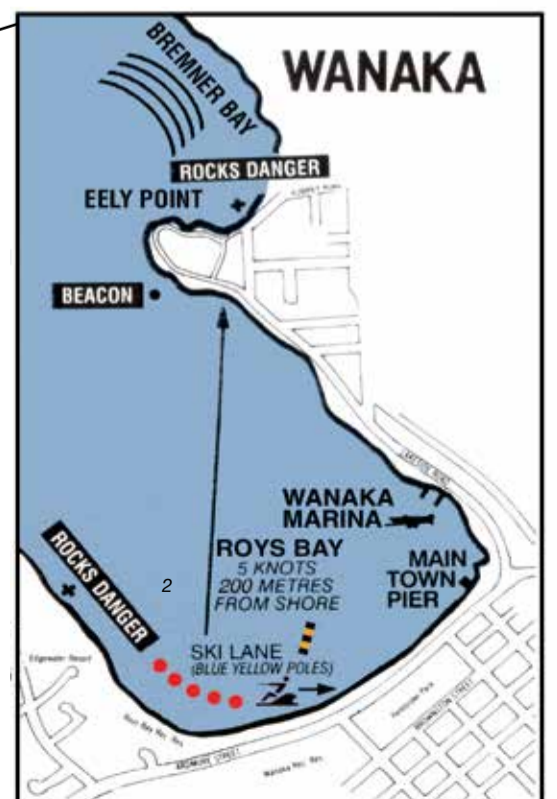
**YACHTS  
DANGER  
POWER LINES**

## BOATING SAFETY TIPS

- Check the boat, engine and equipment before leaving.
- Check the weather forecast before leaving.
- Tell someone where you're going, and when you'll return.
- Know the collision prevention rule, navigational safety rule and local bylaws.
- Never overload the boat.
- Take a proper lifejacket for each person on board and wear them!
- Any person 10 years and under must wear an appropriate sized and fastened lifejacket at all times.
- Have aboard an anchor, bailer, spare fuel, torch and warm gear.
- Guard against fire.
- Avoid alcohol when boating.
- Take two means of communication VHF, Flares, EPIRB and put cellphones in a plastic bag.
- Boats 6 metres and under life jackets must be worn.



- 5 KNOTS IN HARBOUR AREA
- 5 KNOTS - SWIMMING AREAS
- 5 KNOTS AT ALL TIMES
- 5 KNOTS TIME RESTRICTED [SEE OVER FOR TIMES]



**STOP**  
**ALL JET BOATERS**

**Do you know the River Rules?**  
- **Upstream Craft Give Way to Downstream Craft**  
- **Keep Right Up & Down Stream**

## RADIO INFO

For Lake Wanaka Channel 66  
For Lake Hawea Channel 67

Channel 16 is not a monitored channel in this area. Voluntary Ch66 monitoring is undertaken by Lakeland Adventures, Wanaka Marine & Torque Marine. Any enquiries regarding Channel 66 contact Upper Clutha Radio Telephone Association.