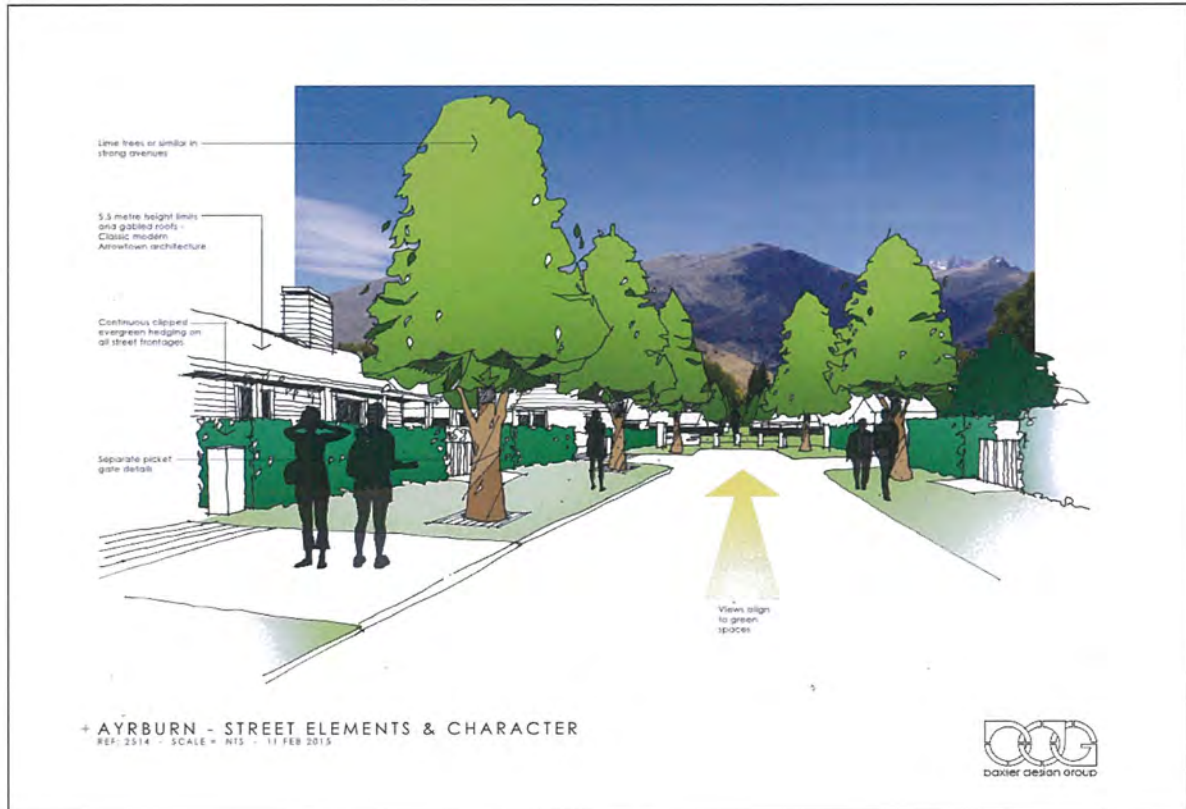


Appendix 1: Project Team

Consultant	Area of Expertise	Description
John Edmonds & Associates	Planning and Environmental Effects	John Edmonds & Associates is a Queenstown based town planning and resource management consultancy with a reputation for excellence.
Anderson Lloyd	Planning and Legal	One of New Zealand's top tier law firms, Anderson Lloyd has had detailed involvement in the affordable housing initiatives arising out of the Jacks Point and Shotover Country developments.
Clark Fortune McDonald & Associates	Surveyors and infrastructure	Clark Fortune McDonald has been servicing the Otago / Southland area since 1898. Considerable corporate knowledge is held within the practice regarding local property ownership and history, community infrastructure and services.
Baxter Design Group	Landscape Architects and Urban Design Assessment	Baxter Design Group is an energetic team of landscape architects involved with many high profile projects encompassing the Southern Lakes region, Central Otago and other main centres in New Zealand.
Dravitzki Brown Architecture	Architects	Dravitzki Brown Architecture are current members of the New Zealand Institute of Architects and are committed to designing beautiful and functional structures that enhance people's lives.
Jackie Gillies & Associates	Archaeological Assessment	Jackie Gillies + Associates carry out building conservation, creative re-use and associated archaeology of historic buildings and sites to the highest possible professional standards as well as promoting awareness of building conservation. Based in Queenstown and Dunedin, the team focuses on the South Island whilst also offering its expertise to the rest of New Zealand and Australasia.
GeoSolve	Geotechnical	GeoSolve has a long track record of finding practical solutions to the management of geotechnical risk, particularly throughout the South Island. The team have unparalleled experience in geological and geotechnical investigations, reaching back to involvement in the major hydroelectric dam projects of the 1970s and 1980s.
Fluent Solutions	Hydrology	Based in Dunedin, Fluent Solutions are a group of experienced professionals with expertise in the fields of Civil, Infrastructure, 3-Waters and Environmental Engineering.
Traffic Design Group	Traffic Management	TDG is New Zealand's largest specialist transportation engineering consultancy offering a full range of professional services in transportation: engineering, planning, modeling, analysis and design. With offices throughout the country, our work spans large and small developments, in both the private and public sectors.

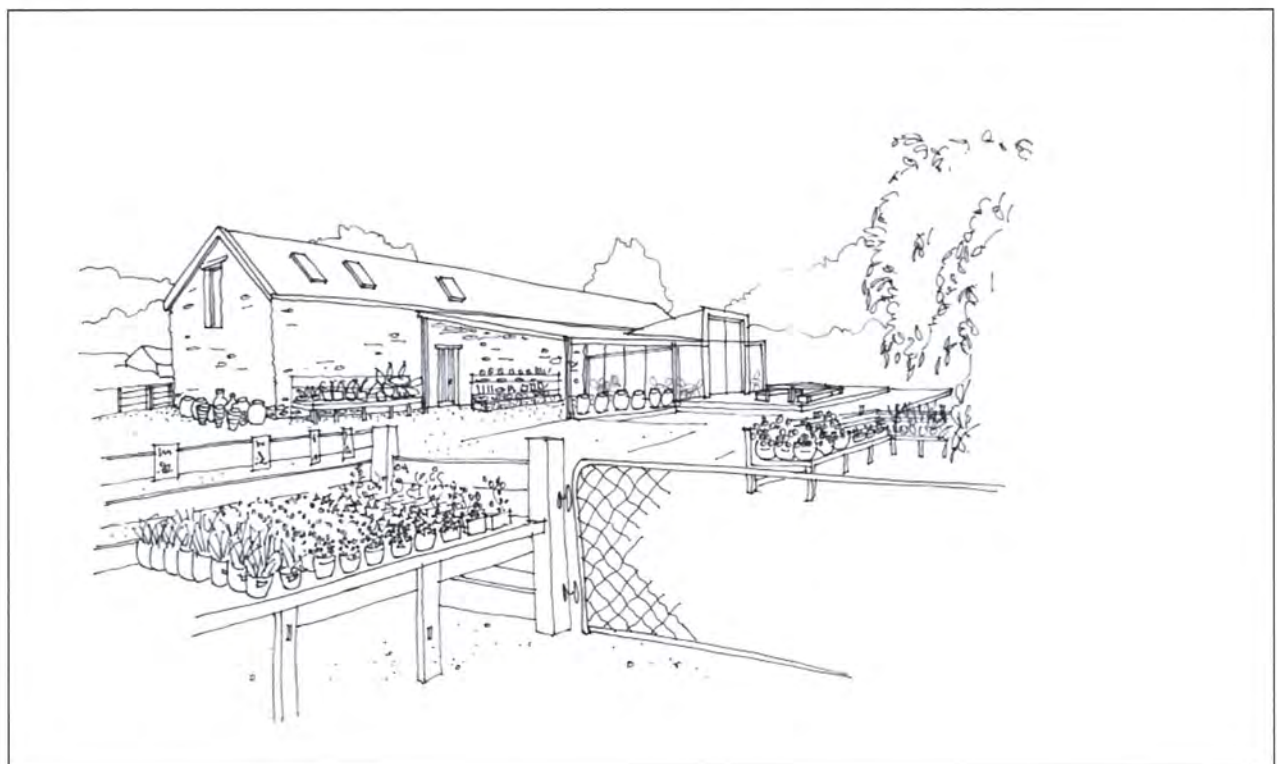
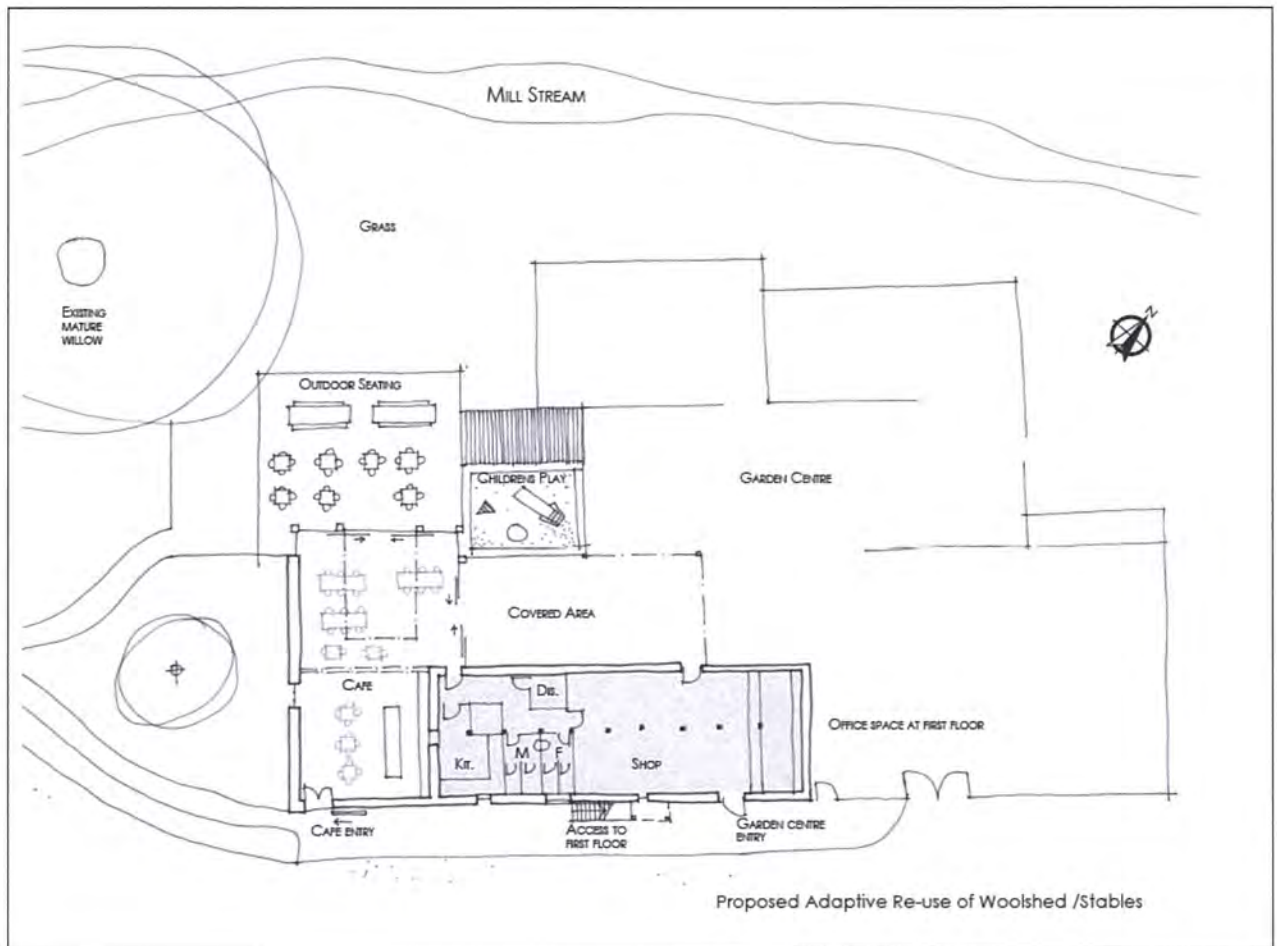
Appendix 2: Ayrburn Farm Perspectives

Street View Perspective




Appendix 3: Ayrburn Farm Concepts

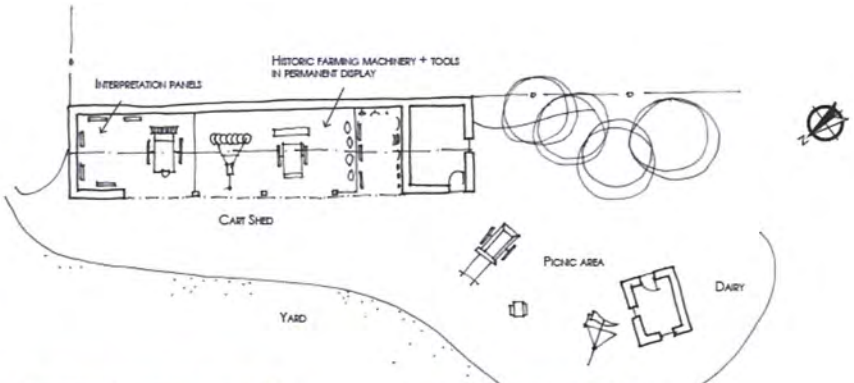
Cafe/ Garden Centre Indicative Scheme




Cart Shed Proposed Arrowtown Museum Display Centre Scheme


Examples of historic agricultural machinery for display inside cart shed








View of shingle roof



View of dairy



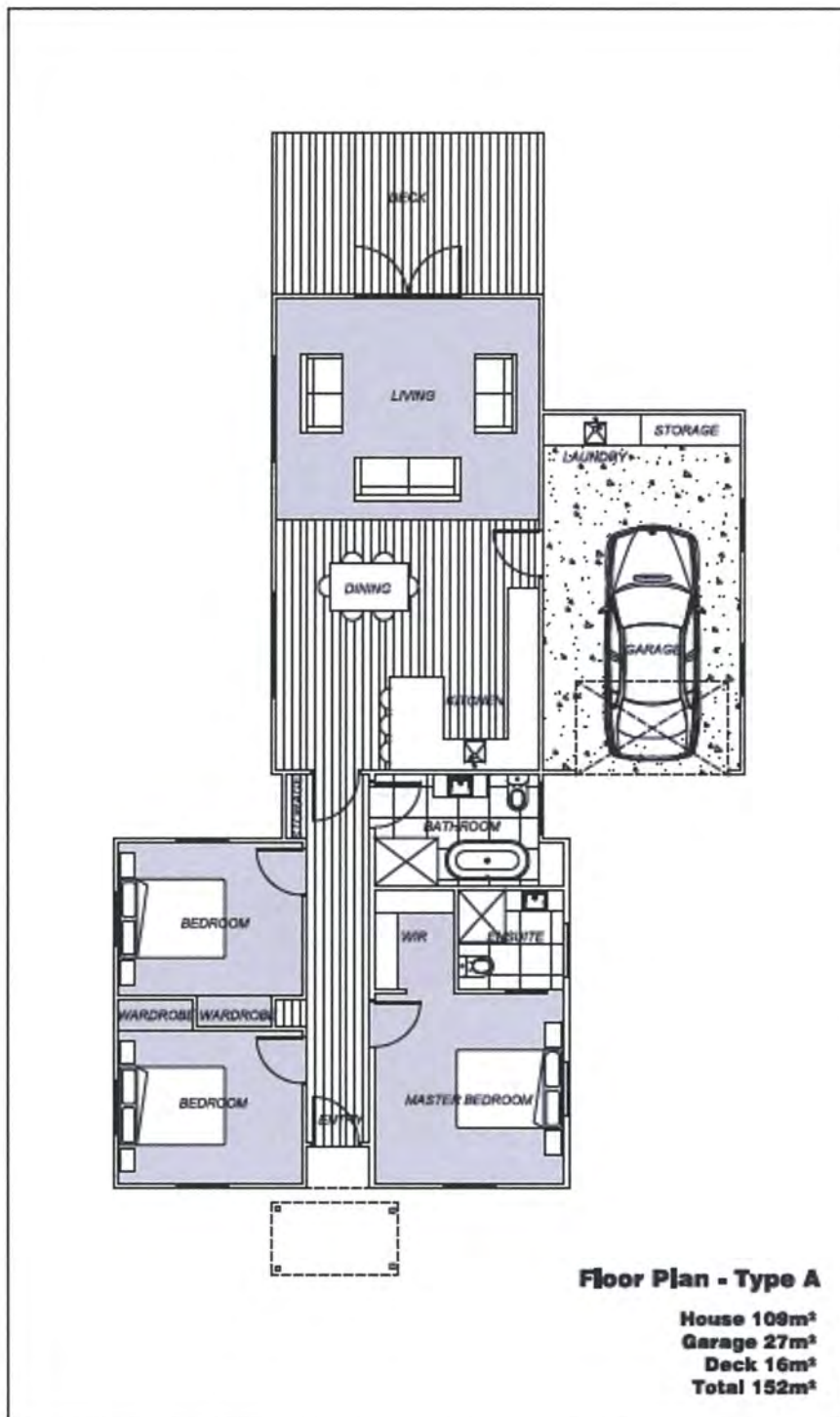
Northwest elevation

Cart Shed - Proposals

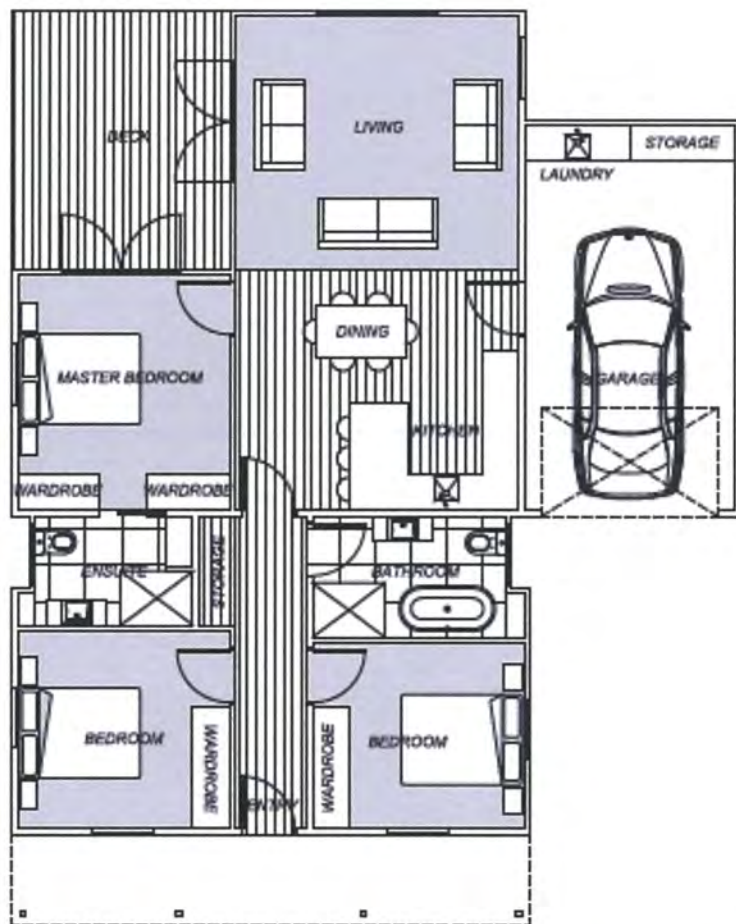
PLAN

Appendix 4: Ayrburn Farm Homes Types

Ayrburn Farm Homes Type A: - Home Plan



Ayrburn Farm Homes Type B – Home Plan



Floor Plan - Type B

House 100m²
Garage 24m²
Deck 16m²
Total 140m²

Ayrburn Farm Homes Types A and B: – Street Frontage



Dravitzki & Brown
ARCHITECTURE



Dravitzki | Brown
ARCHITECTURE