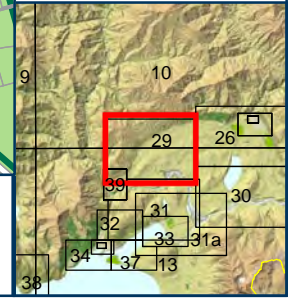




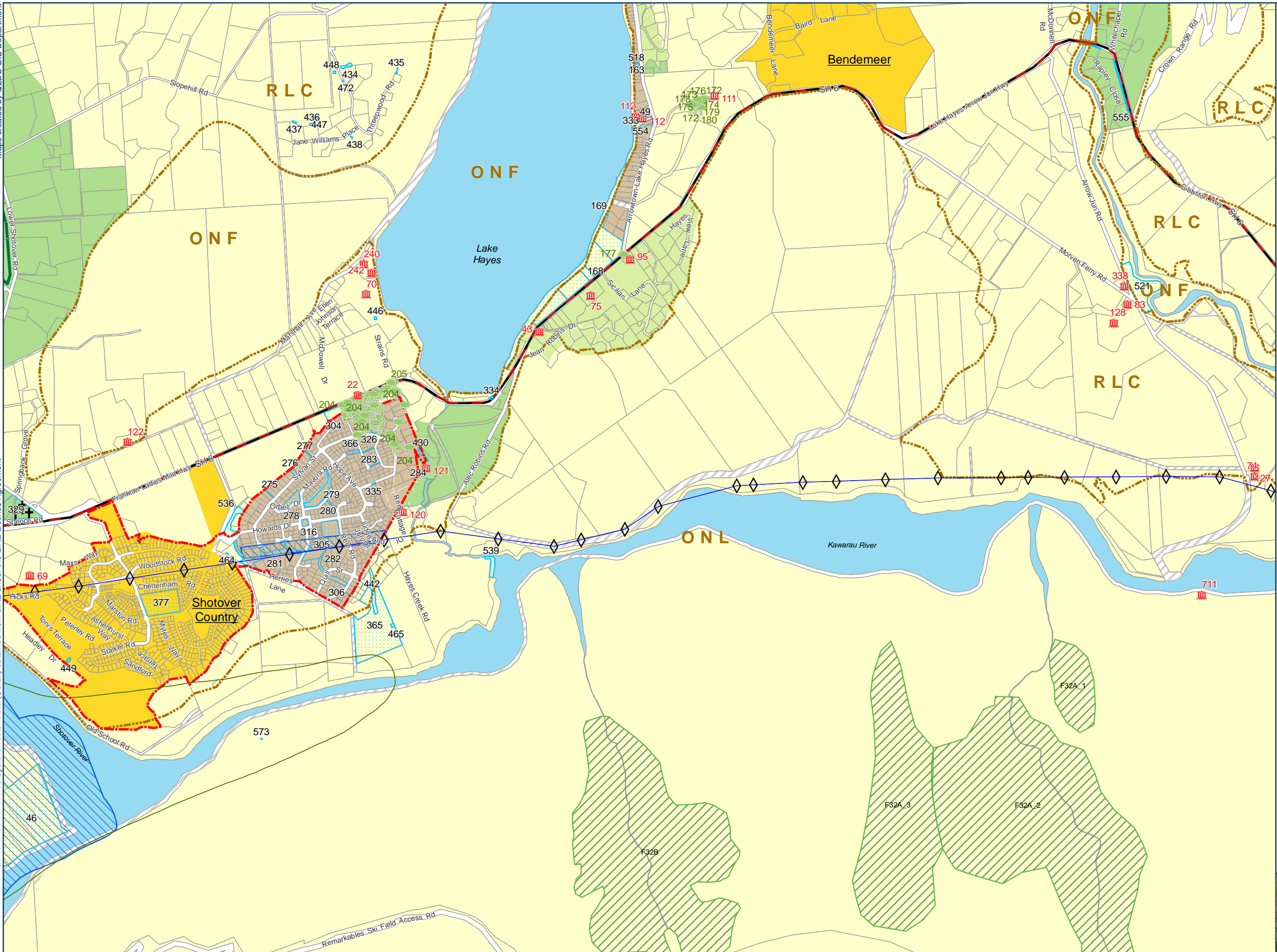
- Legend**
- Historic Heritage Features
 - Protected Tree
 - Protected Avenue of Trees/Other Vegetation
 - Parcel/Road Boundary
 - Landscape Classification (ONF, ONL, RLC)
 - Urban Growth Boundary
 - Unformed Roads
 - Designated Areas
 - Building Restriction
 - Ski Area Sub-Zone
 - Low Density Residential
 - Rural
 - Rural Residential
 - Rural Lifestyle
 - Ferry Hill Rural Residential Sub-Zone
 - Rural Lifestyle Deferred
 - Rural Lifestyle Buffer
 - Water (zoned Rural unless otherwise shown)
 - Special Zones (Operative)



Proposed District Plan Map 29 - Dalefield, Coronet Peak Road

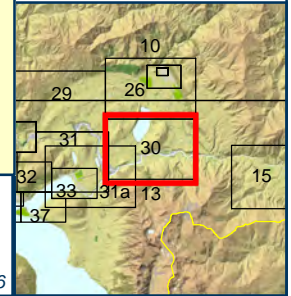


29



- Legend**
- ◇ Transpower Pylons
 - ⊕ Open Cemetery
 - 🏛 Historic Heritage Features
 - 🌳 Protected Tree
 - 🌿 Protected Avenue of Trees/Other Vegetation
 - ⚡ Transmission Corridor
 - ▭ Parcel/Road Boundary
 - 📐 Landscape Classification (ONF, ONL, RLC)
 - 🔴 Urban Growth Boundary
 - 📐 Queenstown Airport Outer Control Boundary (Ldn55)
 - 🛣 State Highway
 - 🌿 Significant Natural Area
 - 🛤 Unformed Roads
 - 🏠 Designated Areas
 - 🏠 Building Restriction
 - 🏠 Low Density Residential
 - 🏠 Rural
 - 🏠 Rural Residential
 - 🏠 Rural Lifestyle
 - 💧 Water (zoned Rural unless otherwise shown)
 - 🟡 Special Zones (Operative)

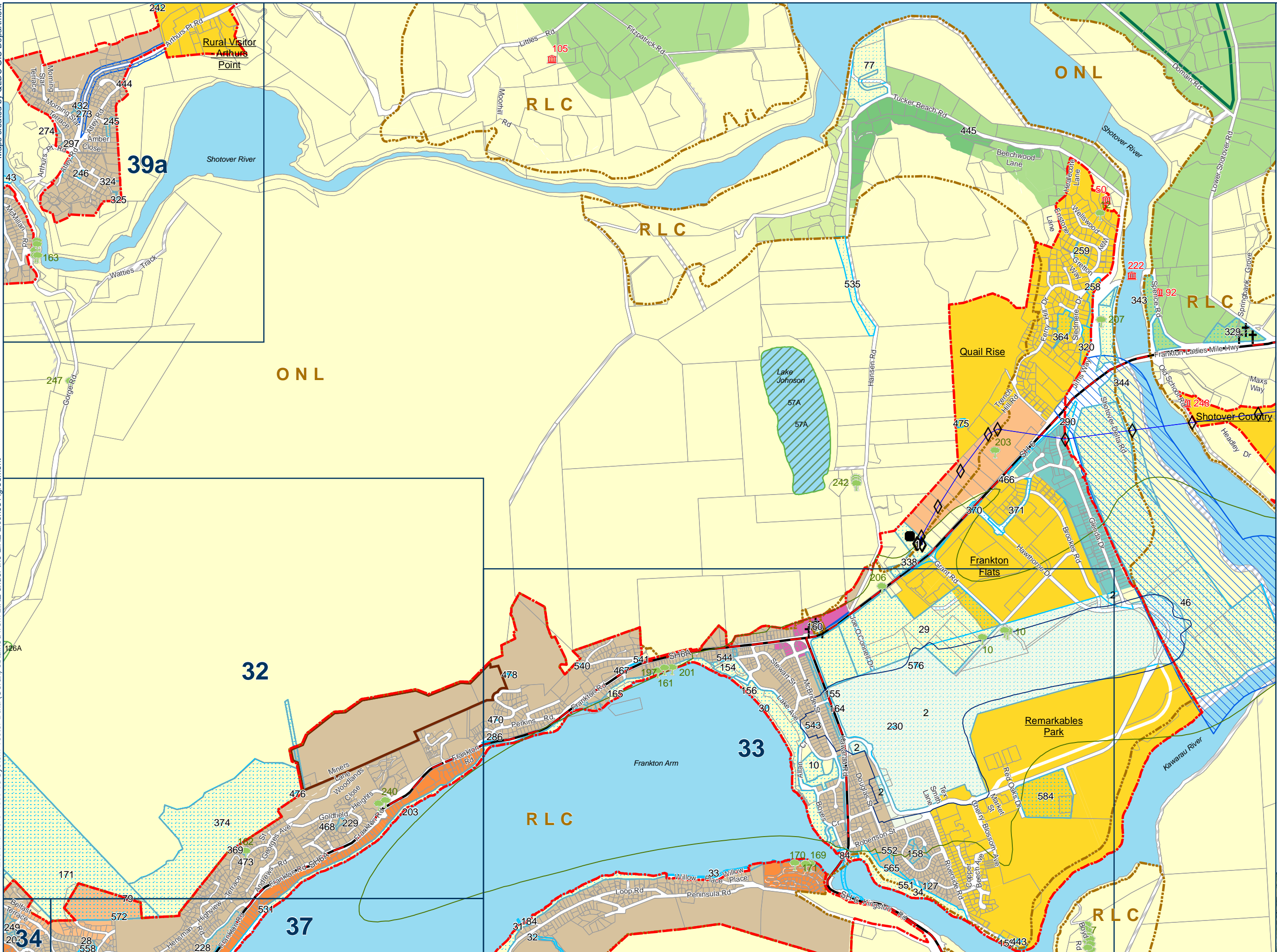
30



Proposed District Plan Map 30 - Lake Hayes



Date Published: 19/12/2016



Legend

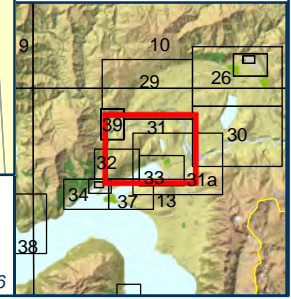
- Open Cemetery
- Transpower AC Substation
- Transpower Pylons
- Historic Heritage Features
- Protected Tree
- Protected Avenue of Trees/Other Vegetation
- Transmission Corridor
- Parcel/Road Boundary
- Landscape Classification (ONF, ONL, RLC)
- Urban Growth Boundary
- Queenstown Airport Air Noise Boundary (Ldn65)
- Queenstown Airport Outer Control Boundary (Ldn55)
- State Highway
- Significant Natural Area
- Unformed Roads
- Queenstown Heights Overlay Area
- Designated Areas
- Building Restriction
- Medium Density Residential
- Low Density Residential
- High Density Residential
- Local Shopping Centre
- Airport Mixed Use Zone
- Rural
- Rural Residential
- Rural Lifestyle
- Ferry Hill Rural Residential Sub-Zone
- Water (zoned Rural unless otherwise shown)
- Industrial A Zone (Operative)
- Special Zones (Operative)



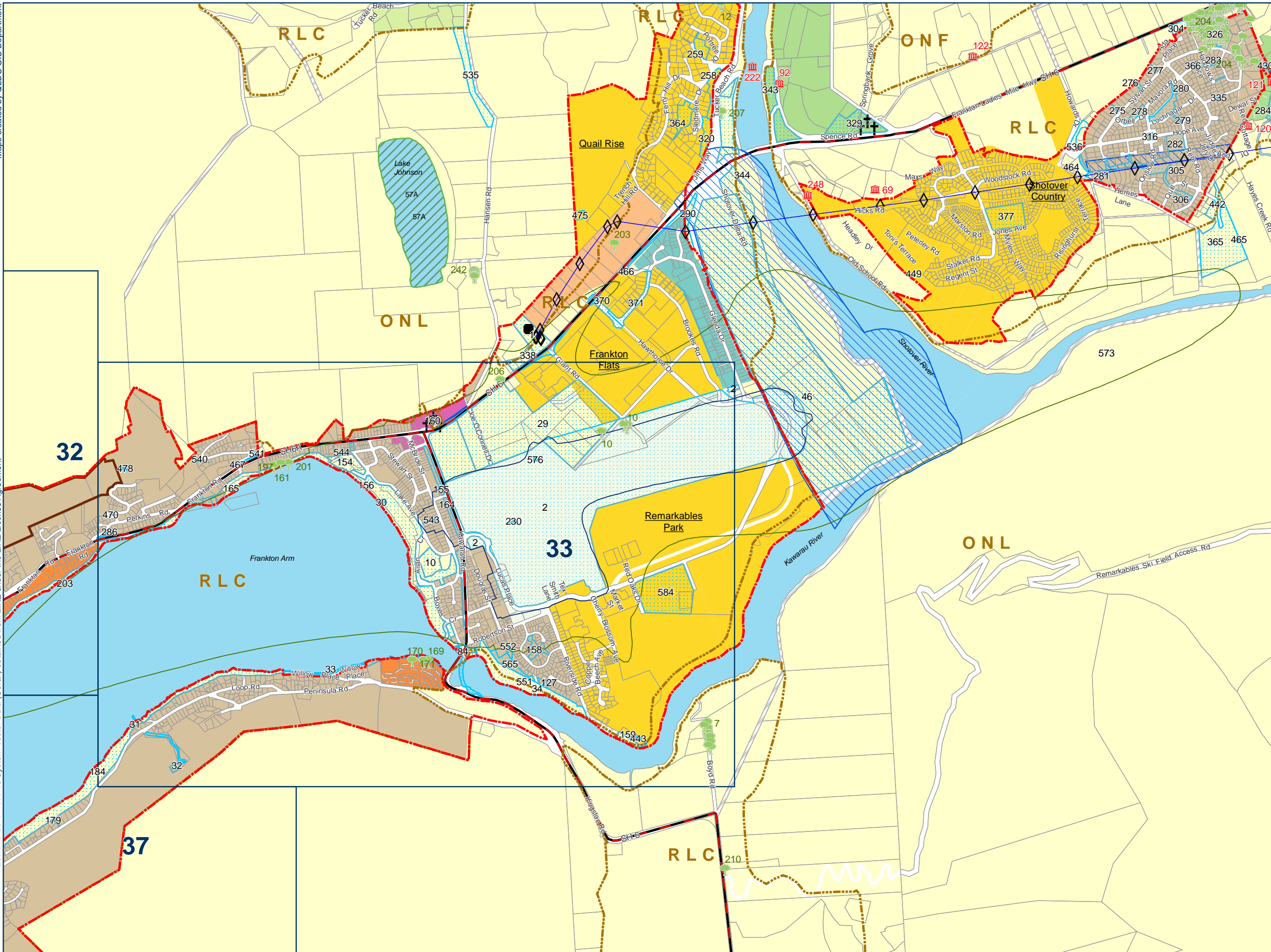
Proposed District Plan Map 31 - Lower Shotover



Date Published: 16/12/2016

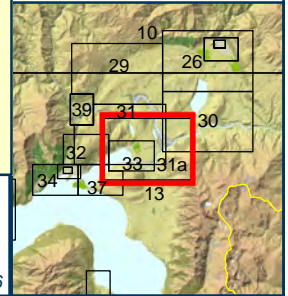


31



- Legend**
- Open Cemetery
 - Transpower AC Substation
 - Transpower Pylons
 - Historic Heritage Features
 - Protected Tree
 - Transmission Corridor
 - Parcel/Road Boundary
 - Landscape Classification (ONF,ONL,RLC)
 - Urban Growth Boundary
 - Queenstown Airport Air Noise Boundary (Ldn65)
 - Queenstown Airport Outer Control Boundary (Ldn55)
 - State Highway
 - Significant Natural Area
 - Unformed Roads
 - Queenstown Heights Overlay Area
 - Designated Areas
 - Building Restriction
 - Medium Density Residential
 - Low Density Residential
 - High Density Residential
 - Local Shopping Centre
 - Airport Mixed Use Zone
 - Rural
 - Rural Residential
 - Rural Lifestyle
 - Water (zoned Rural unless otherwise shown)
 - Industrial A Zone (Operative)
 - Special Zones (Operative)

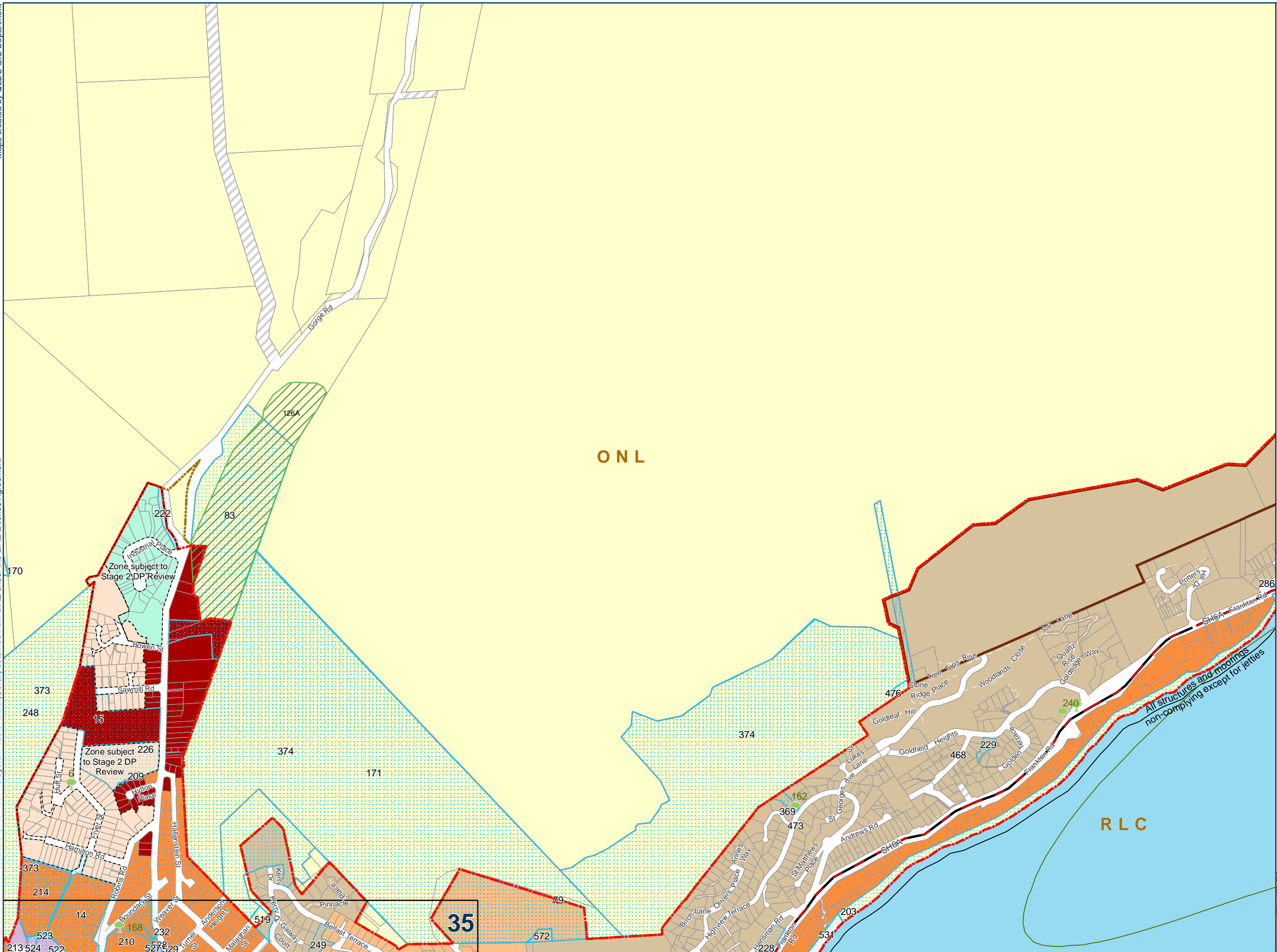
31a



Proposed District Plan Map 31a - Queenstown Airport



Date Published: 16/12/2016



- Legend**
- Protected Tree
 - Parcel/Road Boundary
 - Landscape Classification (ONF, ONL, RLC)
 - Urban Growth Boundary
 - Queenstown Airport Outer Control Boundary (Ldn55)
 - State Highway
 - Significant Natural Area
 - Unformed Roads
 - Queenstown Heights Overlay Area
 - Designated Areas
 - Plan Change Boundary
 - Medium Density Residential
 - Low Density Residential
 - High Density Residential
 - Town Centres
 - Business Mixed Use
 - Rural
 - Water (zoned Rural unless otherwise shown)
 - Business (Operative)
 - High Density Residential (Operative)

ONL

RLC

35

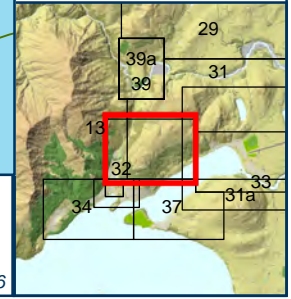
32

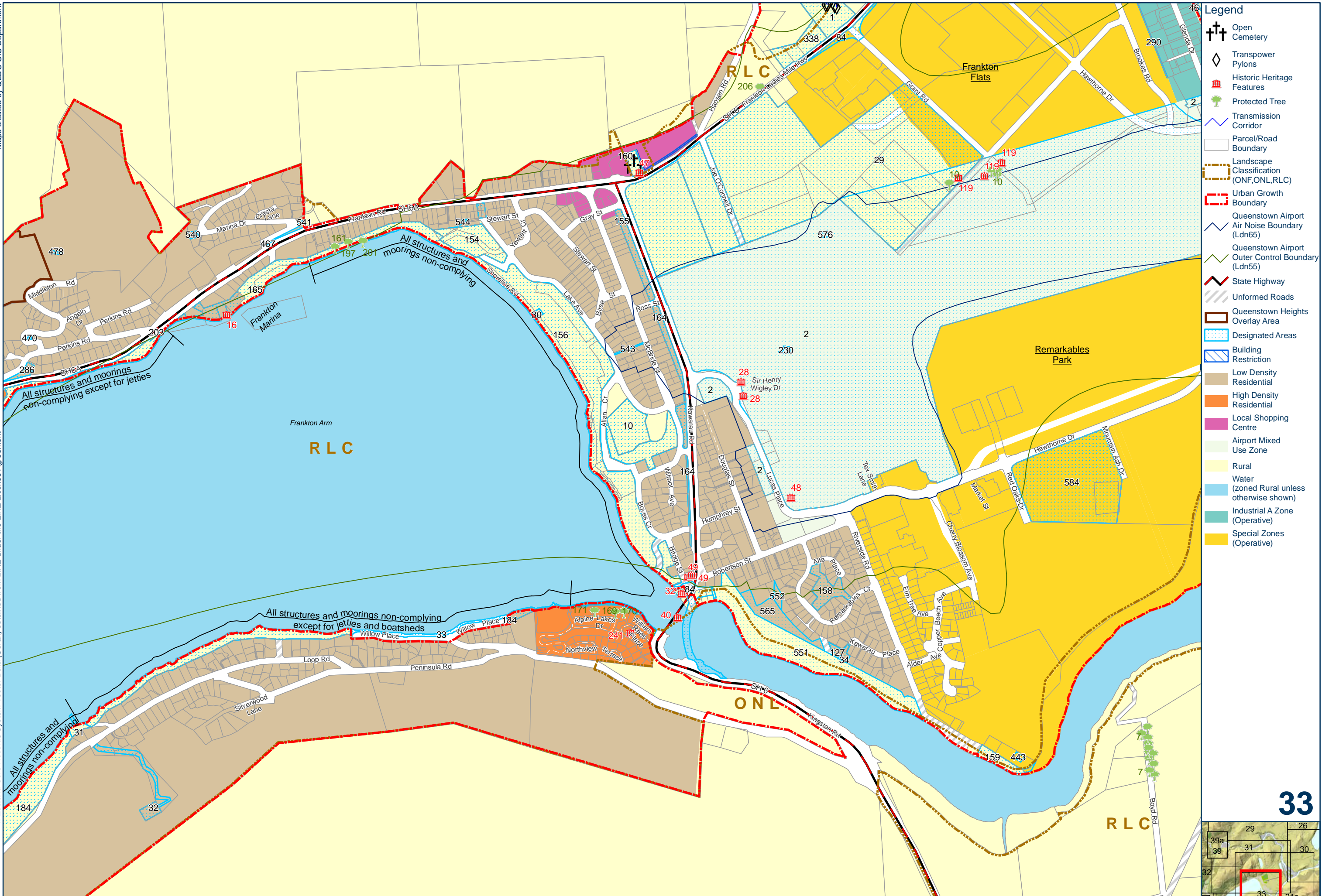


Proposed District Plan Map 32 - Queenstown Hill, Gorge Road



Date Published: 16/12/2016





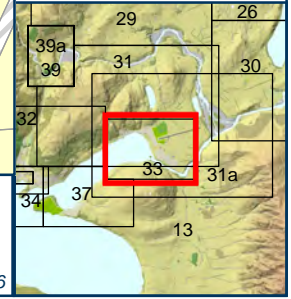
- Legend**
- ⊕ Open Cemetery
 - ◇ Transpower Pylons
 - 🏛️ Historic Heritage Features
 - 🌳 Protected Tree
 - 📏 Transmission Corridor
 - ▭ Parcel/Road Boundary
 - 🔲 Landscape Classification (ONF, ONL, RLC)
 - 🔴 Urban Growth Boundary
 - ✈️ Queenstown Airport
 - 📉 Air Noise Boundary (Ldn65)
 - 📉 Queenstown Airport Outer Control Boundary (Ldn55)
 - 🛣️ State Highway
 - 🛤️ Unformed Roads
 - 🏠 Queenstown Heights Overlay Area
 - 🔲 Designated Areas
 - 🏠 Building Restriction
 - 🏠 Low Density Residential
 - 🏠 High Density Residential
 - 🏠 Local Shopping Centre
 - 🏠 Airport Mixed Use Zone
 - 🌳 Rural
 - 💧 Water (zoned Rural unless otherwise shown)
 - 🏠 Industrial A Zone (Operative)
 - 🏠 Special Zones (Operative)

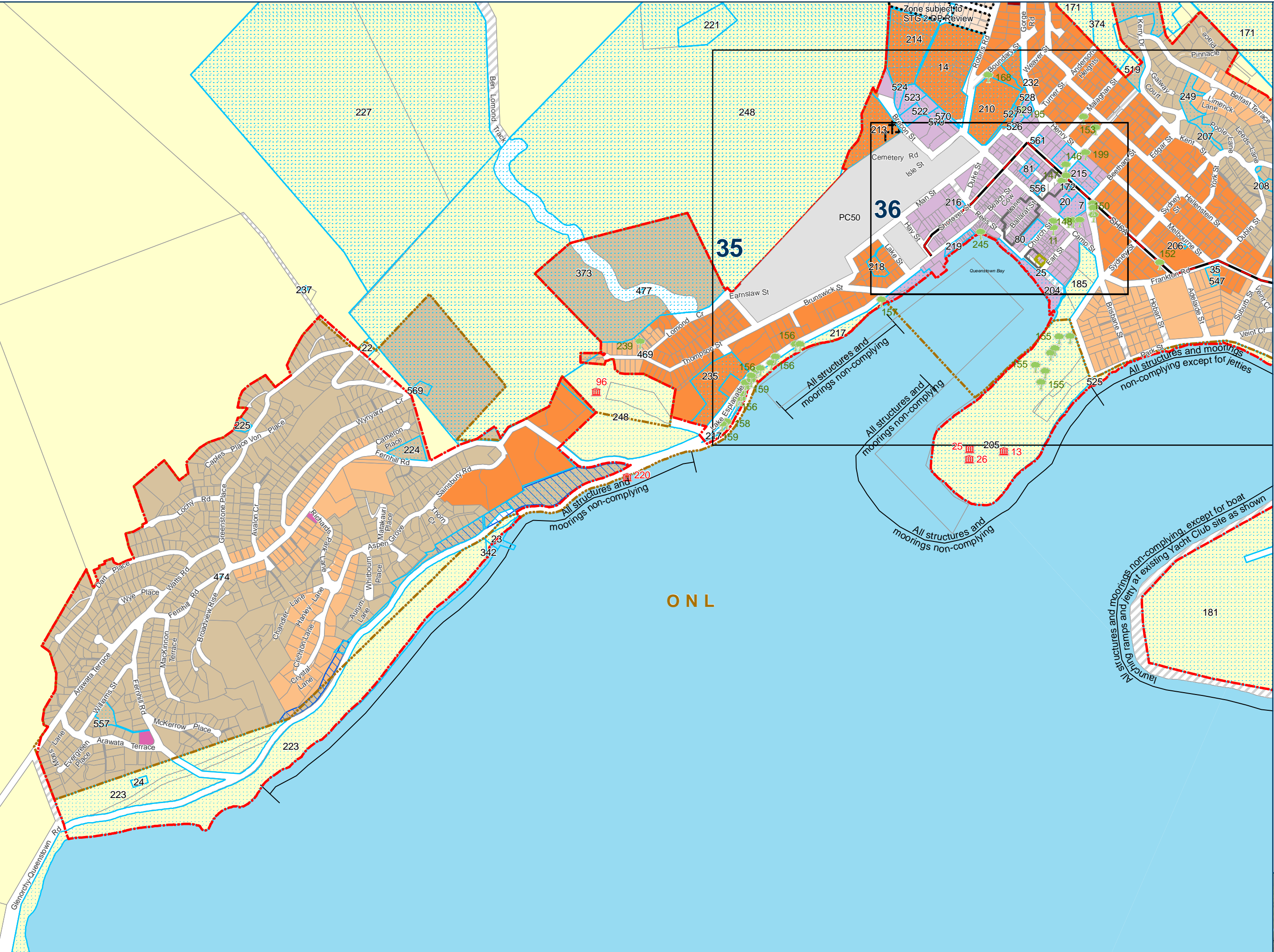


Proposed District Plan Map 33 - Frankton



Date Published: 16/12/2016





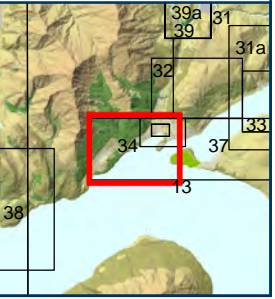
- Legend**
- Open Cemetery
 - Historic Heritage Features
 - Protected Tree
 - Parcel/Road Boundary
 - Landscape Classification (ONF, ONL, RLC)
 - Urban Growth Boundary
 - State Highway
 - Unformed Roads
 - Historic Heritage Precinct
 - Designated Areas
 - Plan Change 50 Area
 - Plan Change Boundary (Other)
 - Building Restriction
 - Heritage Protection Order
 - Medium Density Residential
 - Low Density Residential
 - High Density Residential
 - Town Centres
 - Local Shopping Centre
 - Business Mixed Use
 - Rural
 - Water (zoned Rural unless otherwise shown)
 - High Density Residential (Operative)



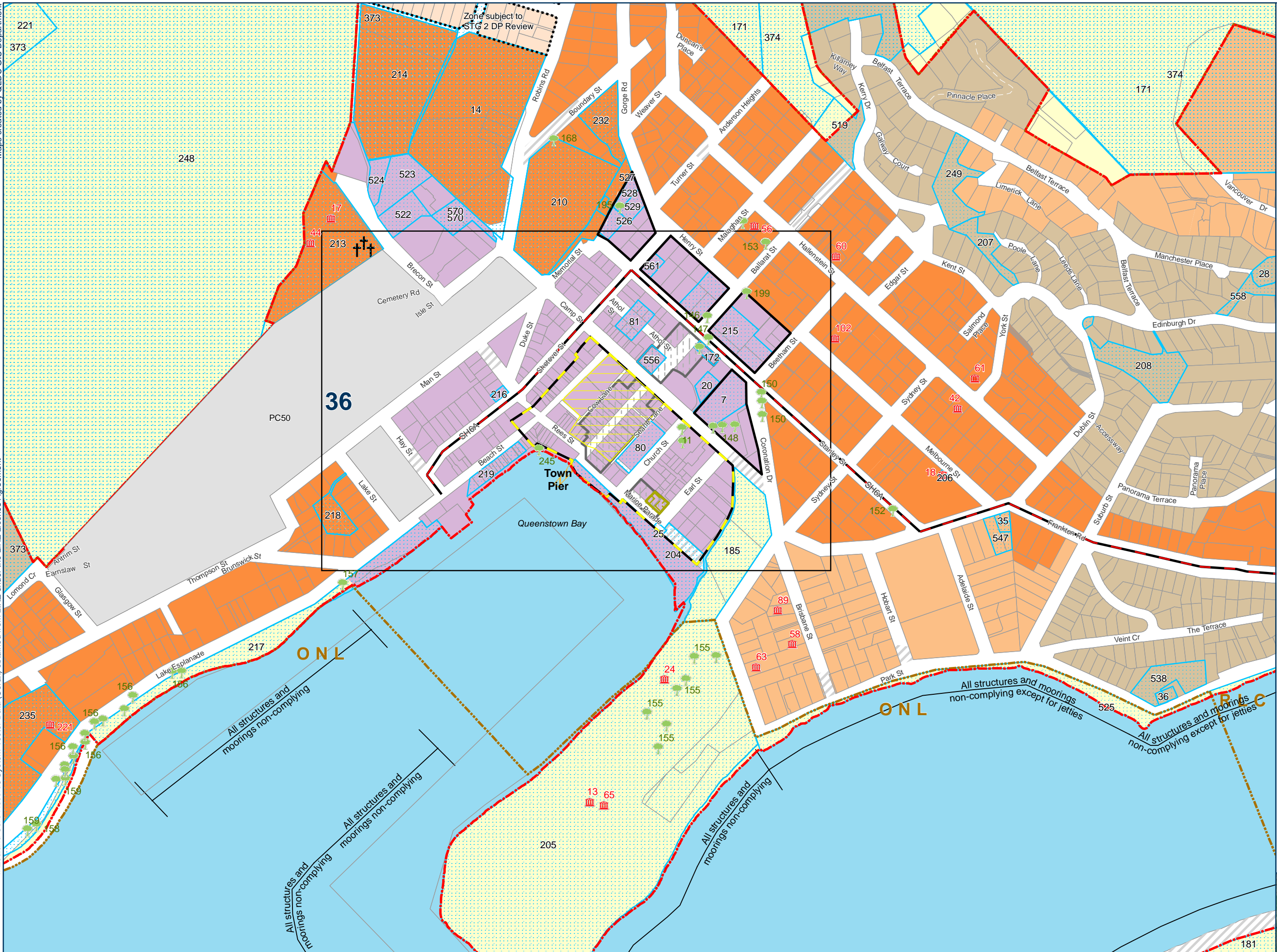
Proposed District Plan Map 34 - Fernhill and Sunshine Bay



Date Published: 16/12/2016

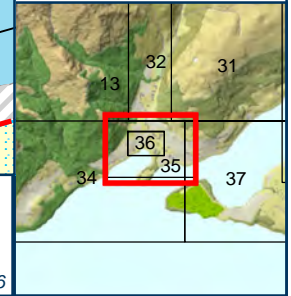


34



- Legend**
- Open Cemetery
 - Historic Heritage Features
 - Protected Tree
 - Parcel/Road Boundary
 - Landscape Classification (ONF, ONL, RLC)
 - Urban Growth Boundary
 - State Highway
 - Unformed Roads
 - Historic Heritage Precinct
 - Designated Areas
 - Plan Change 50 Area
 - Plan Change Boundary (Other)
 - Heritage Protection Order
 - Town Centre Entertainment Precinct
 - Town Centre Special Character Area
 - Town Centre Transition Sub-Zone
 - Town Centre Town Pier
 - Medium Density Residential
 - Low Density Residential
 - High Density Residential
 - Town Centres
 - Rural
 - Water (zoned Rural unless otherwise shown)
 - High Density Residential (Operative)

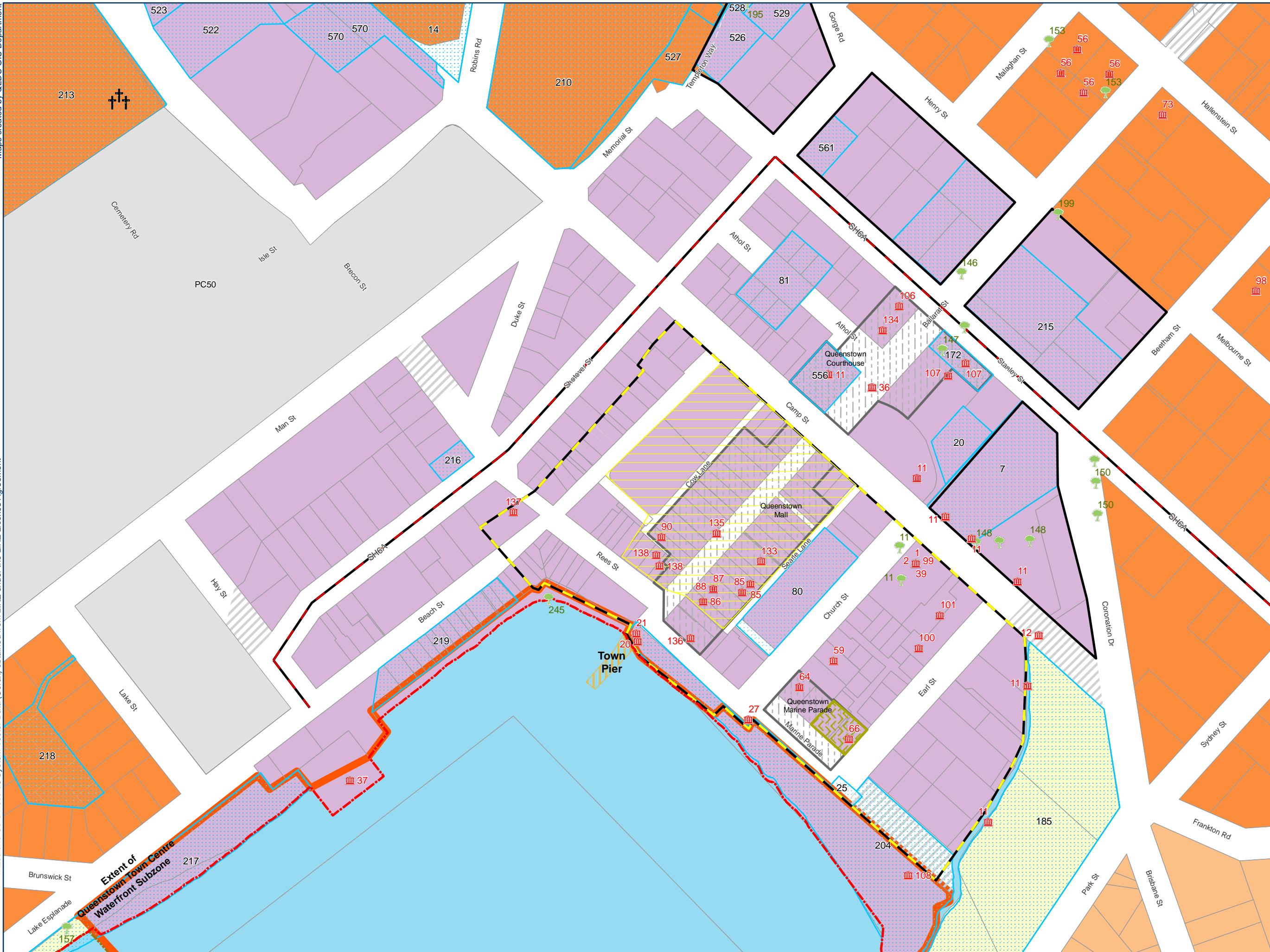
35



Proposed District Plan Map 35 - Queenstown

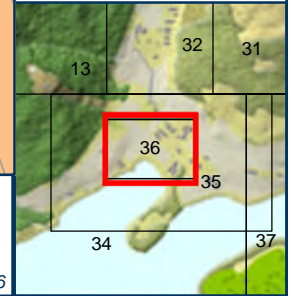


Date Published: 16/12/2016



- Legend**
- Open Cemetery
 - Historic Heritage Features
 - Protected Tree
 - Queenstown Town Centre Waterfront Subzone
 - Parcel/Road Boundary
 - Landscape Classification (ONF, ONL, RLC)
 - Urban Growth Boundary
 - State Highway
 - Unformed Roads
 - Historic Heritage Precinct
 - Designated Areas
 - Plan Change 50 Area
 - Heritage Protection Order
 - Town Centre Entertainment Precinct
 - Town Centre Special Character Area
 - Town Centre Transition Sub-Zone
 - Town Centre Town Pier
 - Medium Density Residential
 - High Density Residential
 - Town Centres
 - Rural
 - Water (zoned Rural unless otherwise shown)

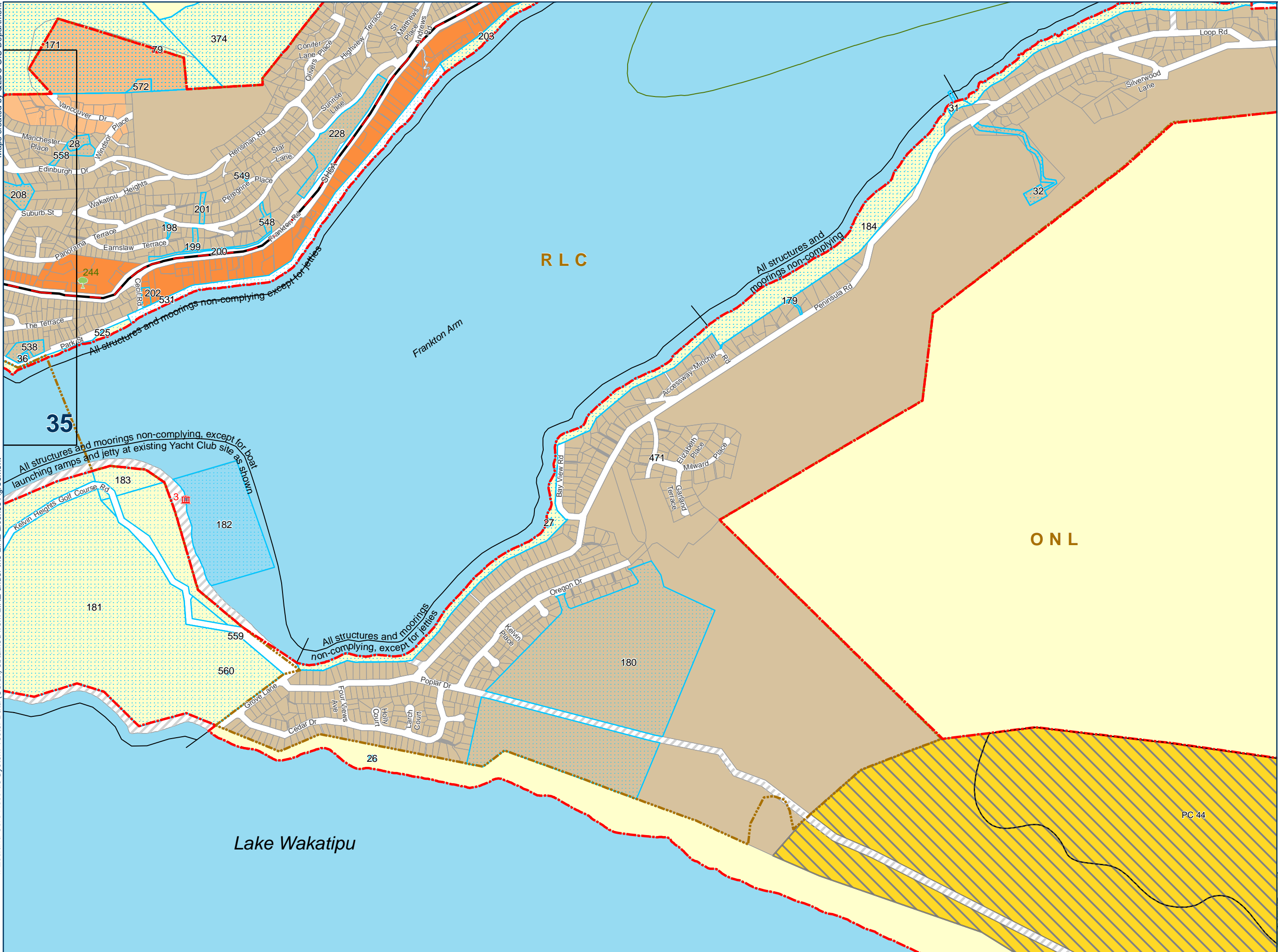
36



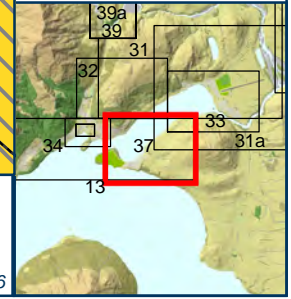
Proposed District Plan Map 36 - Queenstown Central



Date Published: 16/12/2016

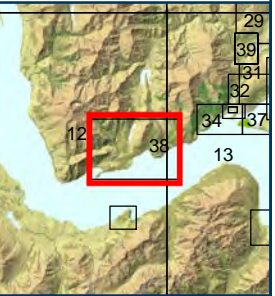


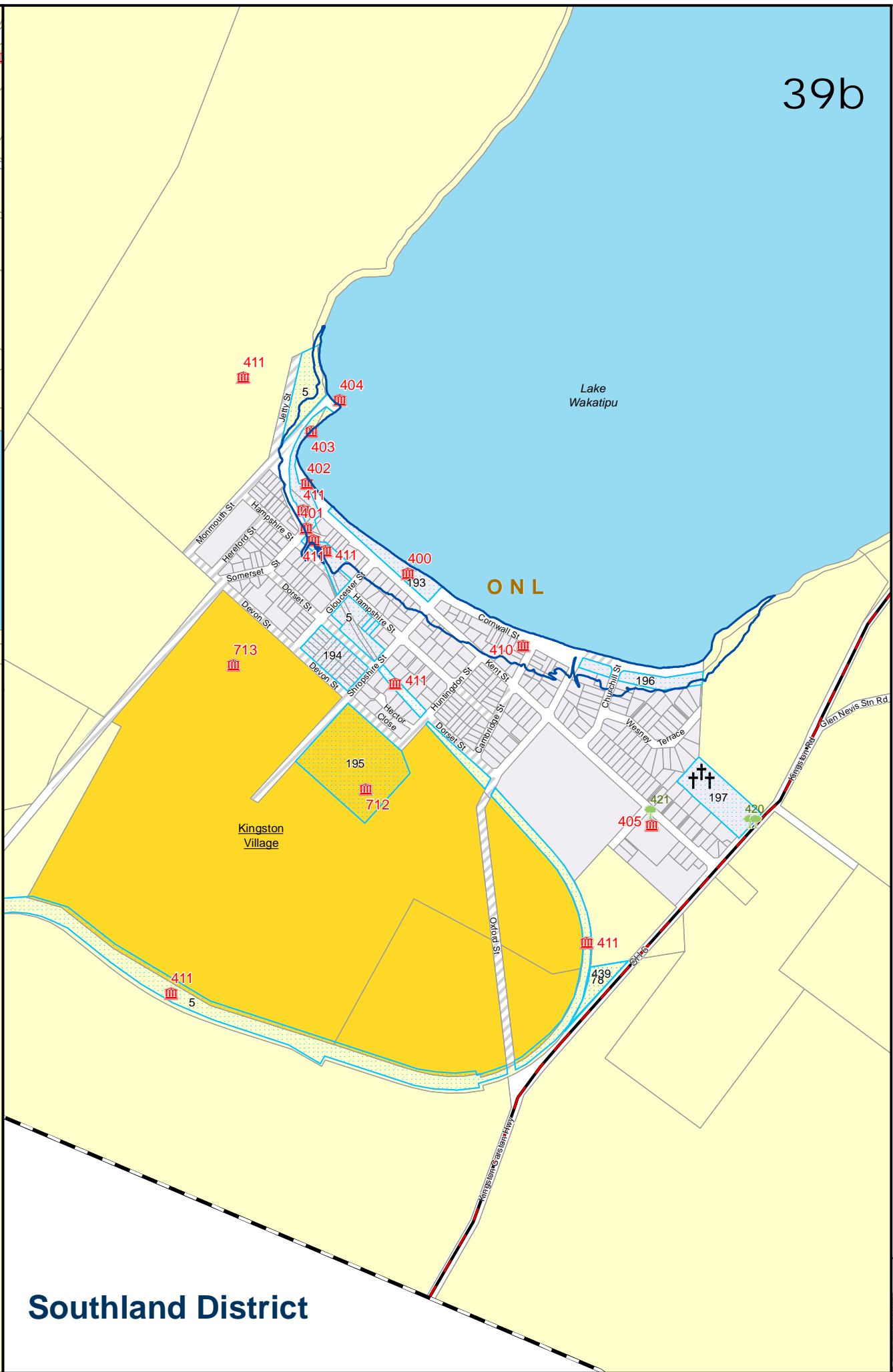
- Legend**
- Historic Heritage Features
 - Protected Tree
 - Parcel/Road Boundary
 - Landscape Classification (ONF, ONL, RLC)
 - Urban Growth Boundary
 - Queenstown Airport Outer Control Boundary (Ldn55)
 - State Highway
 - Unformed Roads
 - Designated Areas
 - Plan Change Boundary
 - Medium Density Residential
 - Low Density Residential
 - High Density Residential
 - Rural
 - Special Zone
 - Water (zoned Rural unless otherwise shown)





- Legend**
- Historic Heritage Features
 - Protected Tree
 - Parcel/Road Boundary
 - Landscape Classification (ONF, ONL, RLC)
 - Significant Natural Area
 - Unformed Roads
 - Designated Areas
 - Visitor Accommodation Sub-Zone
 - Building Restriction
 - Rural Residential Sub-Zone
 - Rural
 - Rural Residential
 - Rural Lifestyle
 - Water (zoned Rural unless otherwise shown)





- Legend**
- Open Cemetery
 - Historic Heritage Features
 - Protected Tree
 - Parcel/Road Boundary
 - Landscape Classification (ONF, ONL, RLC)
 - Urban Growth Boundary
 - State Highway
 - Territorial Authority Boundary
 - Unformed Roads
 - Designated Areas
 - Building Restriction
 - Low Density Residential
 - Rural
 - Water (zoned Rural unless otherwise shown)
 - Township (Operative)
 - Special Zones (Operative)
 - Historical Flood Zone (ie. Land Area below RL 312.8 AMSL)

Southland District

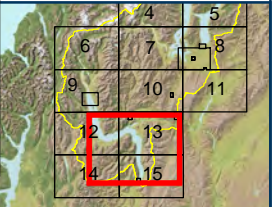
39b

39a

ONL

ONL

39



Proposed District Plan Map 39 - Arthurs Point, Kingston



Date Published: 14/12/2016

Map no.	Changes	Link to Memo	Link to Superseded Map
Legend	Amend notations and zones in the planning map legend. Add the word operative where relevant to the notations and zones. Remove the notation "Potential Open Space (Stage 2 DP Review)" from the map legend.	Clause 16	Map Legend - SUPERSEDED
2	Amend ordering of notations and zones in planning map legend.	Clause 16	Map 2 - SUPERSEDED
3	Amend ordering of notations and zones in planning map legend.	Clause 16	Map 3 - SUPERSEDED
4	Amend water annotation.	Clause 16	Map 4 - SUPERSEDED
5	Amend ordering of notations and zones in planning map legend.	Clause 16	Map 5 - SUPERSEDED
6	Amend ordering of notations and zones in planning map legend and add (Operative) to the Arcadia Special Zone notations.	Clause 16	Map 6 - SUPERSEDED
7	Amend water annotation.	Clause 16	Map 7 - SUPERSEDED
8	Amend ordering of notations and zones in planning map legend and add (Operative) to the Open Space notation and the Three Parks and Rural Visitor Special Zone notations and to the Industrial A Zones. Remove the Potential Open Space Zone notation.	Clause 16	Map 8 - SUPERSEDED
9	Amend ordering of notations and zones in planning map legend and add (Operative) to the Arcadia and Rural Visitor – Blanket Bay Special Zone notations.	Clause 16	Map 9 - SUPERSEDED
10	Amend ordering of notations and zones in planning map legend and add the word (Operative) to the Special Zone notations Mt Cardrona Station, Rural Visitor – Cardrona, Meadow Park, Arrowtown South, and Bendemeer, as well as adding a hashed overlay to Special Zones Millbrook and Waterfall Park.	Clause 16	Map 10 - SUPERSEDED
11	Amend ordering of notations and zones in planning map legend and add (Operative) to the Commercial Precinct notation.	Clause 16	Map 11 - SUPERSEDED
12	Amend ordering of notations and zones in planning map legend and add (Operative) to the Rural visitor – Walter Peak Special Zone notation.	Clause 16	Map 12 - SUPERSEDED

Map no.	Changes	Link to Memo	Link to Superseded Map
13	Add the heritage symbol for item 94 (Roaring Meg Power Station). Amend ordering of notations and zones in planning map legend and add (Operative) to the Arrowtown South, Bendemeer, Shotover Country, Quail Rise, Remarkables Park and Frankton Flats Special Zone notations. Amend the Waterfall Park, Millbrook and Jacks Point Special Zones to have a hashed overlay.	Clause 16	Map 13 - SUPERSEDED
14	Amend water annotation.	Clause 16	Map 14 - SUPERSEDED
15	Amend ordering of notations and zones in planning map legend and add (Operative) to the Kingston Village Special Zone notation. Amend the labelling of the inset 39a to the correct label of 39b.	Clause 16	Map 15 - SUPERSEDED
16	Amend ordering of notations and zones in planning map 16 legend including adding (Operative) to the Visitor Accommodation Sub-Zone notation.	Clause 16	Map 16 - SUPERSEDED
17	Amend ordering of notations and zones in planning map legend including adding (Operative) to the Visitor Accommodation Sub-Zone notation.	Clause 16	Map 17 - SUPERSEDED
18	Amend ordering of notations and zones in planning map legend and add (Operative) to the Open Space notation and the Three Parks and Rural Visitor Special Zone notations.	Clause 16	Map 18 - SUPERSEDED
18a	Amend ordering of notations and zones in planning map legend and add (Operative) to the Rural Visitor Special Zone and notation. Remove the Visitor Accommodation Sub-Zone annotation.	Clause 16	Map 18a - SUPERSEDED
19	Amend ordering of notations and zones in planning map legend and add (Operative) to the Open Space notation and the Penrith Park Special Zone notation. Amend the legend of the planning map 19 to include a Building Restriction Area notation, and remove the annotation for Visitor Accommodation Sub-Zone.	Clause 16	Map 19 - SUPERSEDED
20	Amend ordering of notations and zones in planning map legend and add (Operative) to the Open Space notation. Remove the Visitor Accommodation Sub-Zone annotation from the map 20 legend and map.	Clause 16	Map 20 - SUPERSEDED
21	Amend Roy's Bay annotation. Amend the ordering of notations and zones in planning map legend and remove the notation for Potential Open Space from the map and legend. Remove the Visitor Accommodation Sub-Zone from the planning map and legend.	Clause 16	Map 21 - SUPERSEDED

Map no.	Changes	Link to Memo	Link to Superseded Map
22	Amend ordering of notations and zones in planning map 22 legend. Remove the Visitor Accommodation Sub-Zone annotation from the map 22 legend and map.	Clause 16	Map 22 - SUPERSEDED
23	Amend the ordering of notations and zones in planning map legend and remove the notation for Potential Open Space from the map and legend. Add the word Operative to the Three Parks Special Zone notation. Remove the Visitor Accommodation Sub-Zone annotation from the map 23 legend and map.	Clause 16	Map 23 - SUPERSEDED
24	Amend ordering of notations and zones in planning map legend and add (Operative) to the Open Space notation. Add the word Operative to the Mt Cardrona Station and Rural Visitor - Cardrona Special Zone notations.	Clause 16	Map 24 - SUPERSEDED
25	Amend ordering of notations and zones in planning map legend and add (Operative) to the Commercial Precinct notation and to the Visitor Accommodation Sub-Zone notation and the Rural Visitor – Blanket Bay Special Zone notation. Remove the second Designations annotation from the legend, and add the flood line notation.	Clause 16	Map 25 - SUPERSEDED
26	Amend ordering of notations and zones in planning map legend and remove (Operative) from the Town Centres notation, also adding (Operative) to the Visitor Accommodation Sub-Zone notation for the area in Rural Residential on Speargrass Flat Road. Add the word Operative to the Arrowtown South, Meadow Park and Bendemeer Special Zones. Amend the Waterfall Park and Millbrook Special Zones to have a hashed overlay. Remove the Visitor Accommodation Sub-Zone notation in the Arrowtown Residential Historic Management	Clause 16	Map 26 - SUPERSEDED
27	Amend ordering of notations and zones in planning map legend and add (Operative) to the Arrowtown South and Meadow Park Special Zone notations. Amend the Millbrook Special Zone to have a hashed overlay. Remove the Visitor Accommodation Sub-Zone annotation from the map 27 legend and map.	Clause 16	Map 27 - SUPERSEDED
28	Amend ordering of notations and zones in planning map legend and add a hashed overlay to the Millbrook Special Zone notations. Remove the Visitor Accommodation Sub-Zone annotation from the map 28 legend and map.	Clause 16	Map 28 - SUPERSEDED

Map no.	Changes	Link to Memo	Link to Superseded Map
29	Amend ordering of notations and zones in planning map legend and add (Operative) to the Rural Visitor – Arthurs Point Special Zone notation. Remove the annotations for Visitor Accommodation Sub-Zone from the legend.	Clause 16	Map 29 - SUPERSEDED
30	Amend the Shotover Country Special Zone annotation.	Clause 16	Map 30 - SUPERSEDED
	Amend ordering of notations and zones in planning map legend and add (Operative) to the Bendemeer and Shotover Country Special Zone notations. Remove the Visitor Accommodation Sub-Zone annotation from the map 30 legend and map.	Clause 16	
31	Amend the Special Zone notations by adding the word Operative to the Rural Visitor – Arthurs Point, Shotover Country, Quail Rise, Frankton Flat and Remarkables Park Special Zones. Remove the Visitor Accommodation Sub-Zone annotation from the map 31 legend and map.	Clause 16	Map 31 - SUPERSEDED
31a	Amend the Shotover Country Special Zone annotation.	Clause 16	Map 31a - SUPERSEDED
	Amend ordering of notations and zones in planning map legend and add (Operative) to the Industrial A Zones and Remarkables Park, Frankton Flats, Quail Rise and Shotover Country Special Zones notations. Remove the Visitor Accommodation Sub-Zone annotation from the map 31a legend and map.	Clause 16	
32	Amend ordering of notations and zones in planning map legend. Remove the Visitor Accommodation Sub-Zone annotation from the map 32 legend and map.	Clause 16	Map 32 - SUPERSEDED
33	Amend ordering of notations and zones in planning map legend and add (Operative) to the Frankton Flats and Remarkables Park Special Zone notations. Remove the Visitor Accommodation Sub-Zone annotation from the map 33 legend and map.	Clause 16	Map 33 - SUPERSEDED
34	Amend ordering of notations and zones in planning map legend. Remove the Visitor Accommodation Sub-Zone annotation from the map 34 legend and map.	Clause 16	Map 34 - SUPERSEDED
35	Amend ordering of notations and zones in planning map legend. Remove the Visitor Accommodation Sub-Zone annotation from the map 35 legend and map. Amend Proposed District Plan Map 35 to include William’s Cottage under the Heritage Protection Order annotation. Amend PC50 area.	Clause 16	Map 35 - SUPERSEDED

Map no.	Changes	Link to Memo	Link to Superseded Map
36	Amend ordering of notations and zones in planning map legend. Remove the annotations for Visitor Accommodation Sub-Zone from the legend. Amend Proposed District Plan Map 36 to include William's Cottage under the Heritage Protection Order annotation. Amend PC50 area.	Clause 16	Map 36 - SUPERSEDED
37	Amend ordering of notations and zones in planning map legend and adding a hashed overlay to the Jacks Point Special Zone notations. Remove the Visitor Accommodation Sub-Zone annotation from the map 37 legend and map.	Clause 16	Map 37 - SUPERSEDED
38	Amend water annotation.	Clause 16	Map 38 - SUPERSEDED
39	Amend ordering of notations and zones in planning map legend and add (Operative) to the Rural Visitor – Arthurs Point and Kingston Village Special Zone notations. Amend the labelling of the insets to read 39a and 39b. Add the flood line annotation. Remove duplicate Designation annotations from the legend. Remove the Visitor Accommodation Sub-Zone annotation from the map 39 legend and map 39a.	Clause 16	Map 39 - SUPERSEDED
Legend Maps 30, 31, 31a, 32, 33 & 37	Amend maps 30-33 (inclusive) and 37 legends for the Queenstown Airport Outer Control Boundary annotation	Clause 16	As above

Map no.	Changes	Link to Memo	Link to Superseded Map
13	Amend PDP Map 13 as the Plan Change 44 area is currently shown as “Special Zone (Operative)”. As this area has been included in the Proposed District Plan Review, it is necessary to show it as “Special Zone” as used for the Jack’s Point Zone adjacent to it.	Clause 16	Map 13 - SUPERSEDED