

**KEY**

- VIEW POINT FROM ROAD
- SIGHT LINES

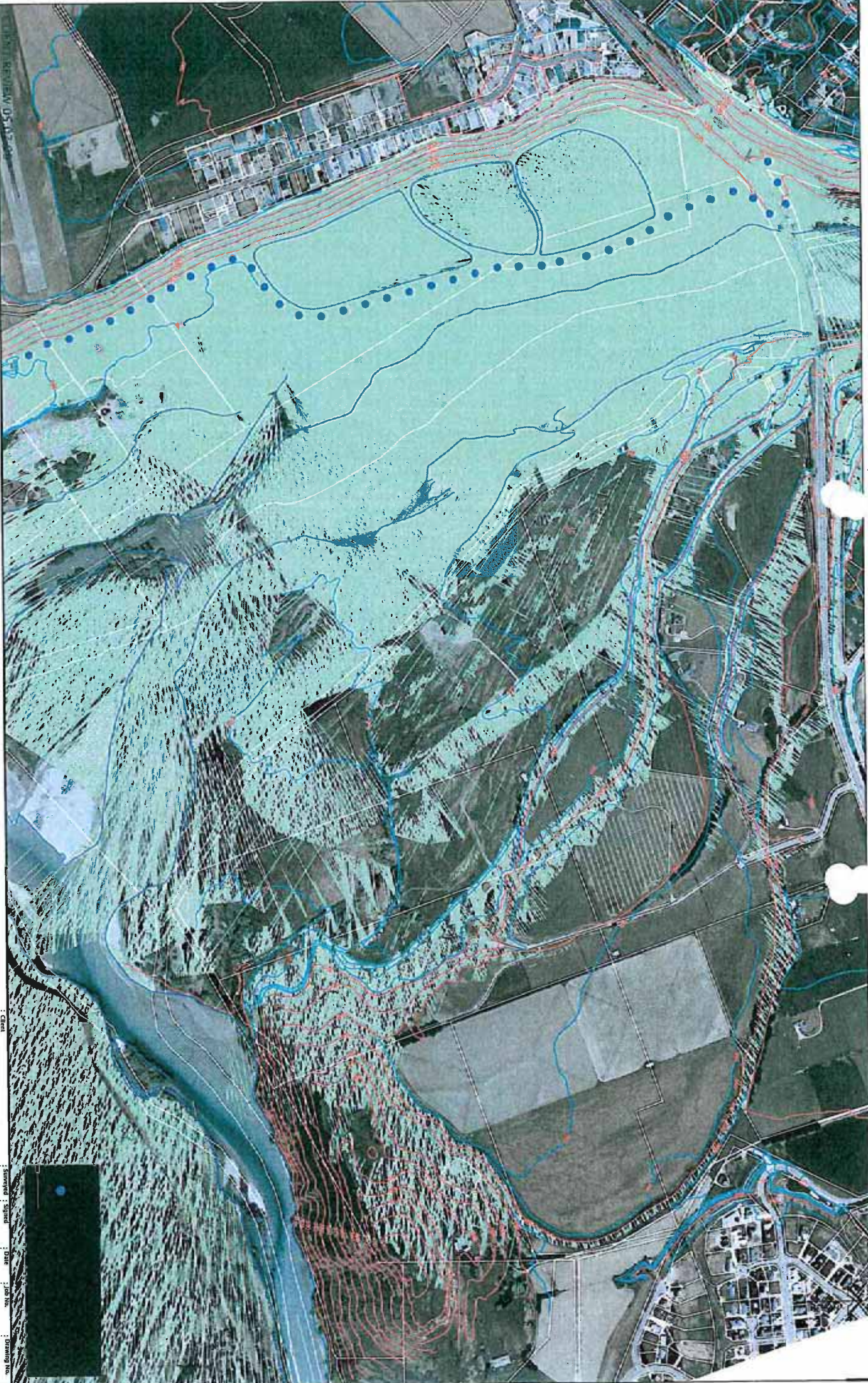
**FIGURE 15:**  
**VISIBILITY ANALYSIS -**  
**SLEDMERE DRIVE**

**Clark Fortune McDonald & Associates**  
 309 Lower Shaker Road, P.O. Box 559 Queenstown  
 Tel. 033441-8144, Fax 033442-1066, Email admin@cfma.co.nz  
 21 Reed Crescent, P.O. Box 550, Wanaka  
 Tel. 033443-4148, Fax 033443-4145, Email admin@cfma.co.nz  
 1099 2, Campbell Road, P.O. Box 100, Invercargill  
 Tel. 033225-5555, Fax 033225-1889, Email admin@cfma.co.nz

Rev.	Date	Description

Client	LADIES MILE PARTNERSHIP
Map	Site plan showing 21, 22, 23, 24, 25, 26, 27, 28, 29, 30, 31, 32, 33, 34, 35, 36, 37, 38, 39, 40, 41, 42, 43, 44, 45, 46, 47, 48, 49, 50, 51, 52, 53, 54, 55, 56, 57, 58, 59, 60, 61, 62, 63, 64, 65, 66, 67, 68, 69, 70, 71, 72, 73, 74, 75, 76, 77, 78, 79, 80, 81, 82, 83, 84, 85, 86, 87, 88, 89, 90, 91, 92, 93, 94, 95, 96, 97, 98, 99, 100, 101, 102, 103, 104, 105, 106, 107, 108, 109, 110, 111, 112, 113, 114, 115, 116, 117, 118, 119, 120, 121, 122, 123, 124, 125, 126, 127, 128, 129, 130, 131, 132, 133, 134, 135, 136, 137, 138, 139, 140, 141, 142, 143, 144, 145, 146, 147, 148, 149, 150, 151, 152, 153, 154, 155, 156, 157, 158, 159, 160, 161, 162, 163, 164, 165, 166, 167, 168, 169, 170, 171, 172, 173, 174, 175, 176, 177, 178, 179, 180, 181, 182, 183, 184, 185, 186, 187, 188, 189, 190, 191, 192, 193, 194, 195, 196, 197, 198, 199, 200, 201, 202, 203, 204, 205, 206, 207, 208, 209, 210, 211, 212, 213, 214, 215, 216, 217, 218, 219, 220, 221, 222, 223, 224, 225, 226, 227, 228, 229, 230, 231, 232, 233, 234, 235, 236, 237, 238, 239, 240, 241, 242, 243, 244, 245, 246, 247, 248, 249, 250, 251, 252, 253, 254, 255, 256, 257, 258, 259, 260, 261, 262, 263, 264, 265, 266, 267, 268, 269, 270, 271, 272, 273, 274, 275, 276, 277, 278, 279, 280, 281, 282, 283, 284, 285, 286, 287, 288, 289, 290, 291, 292, 293, 294, 295, 296, 297, 298, 299, 300, 301, 302, 303, 304, 305, 306, 307, 308, 309, 310, 311, 312, 313, 314, 315, 316, 317, 318, 319, 320, 321, 322, 323, 324, 325, 326, 327, 328, 329, 330, 331, 332, 333, 334, 335, 336, 337, 338, 339, 340, 341, 342, 343, 344, 345, 346, 347, 348, 349, 350, 351, 352, 353, 354, 355, 356, 357, 358, 359, 360, 361, 362, 363, 364, 365, 366, 367, 368, 369, 370, 371, 372, 373, 374, 375, 376, 377, 378, 379, 380, 381, 382, 383, 384, 385, 386, 387, 388, 389, 390, 391, 392, 393, 394, 395, 396, 397, 398, 399, 400, 401, 402, 403, 404, 405, 406, 407, 408, 409, 410, 411, 412, 413, 414, 415, 416, 417, 418, 419, 420, 421, 422, 423, 424, 425, 426, 427, 428, 429, 430, 431, 432, 433, 434, 435, 436, 437, 438, 439, 440, 441, 442, 443, 444, 445, 446, 447, 448, 449, 450, 451, 452, 453, 454, 455, 456, 457, 458, 459, 460, 461, 462, 463, 464, 465, 466, 467, 468, 469, 470, 471, 472, 473, 474, 475, 476, 477, 478, 479, 480, 481, 482, 483, 484, 485, 486, 487, 488, 489, 490, 491, 492, 493, 494, 495, 496, 497, 498, 499, 500, 501, 502, 503, 504, 505, 506, 507, 508, 509, 510, 511, 512, 513, 514, 515, 516, 517, 518, 519, 520, 521, 522, 523, 524, 525, 526, 527, 528, 529, 530, 531, 532, 533, 534, 535, 536, 537, 538, 539, 540, 541, 542, 543, 544, 545, 546, 547, 548, 549, 550, 551, 552, 553, 554, 555, 556, 557, 558, 559, 560, 561, 562, 563, 564, 565, 566, 567, 568, 569, 570, 571, 572, 573, 574, 575, 576, 577, 578, 579, 580, 581, 582, 583, 584, 585, 586, 587, 588, 589, 590, 591, 592, 593, 594, 595, 596, 597, 598, 599, 600, 601, 602, 603, 604, 605, 606, 607, 608, 609, 610, 611, 612, 613, 614, 615, 616, 617, 618, 619, 620, 621, 622, 623, 624, 625, 626, 627, 628, 629, 630, 631, 632, 633, 634, 635, 636, 637, 638, 639, 640, 641, 642, 643, 644, 645, 646, 647, 648, 649, 650, 651, 652, 653, 654, 655, 656, 657, 658, 659, 660, 661, 662, 663, 664, 665, 666, 667, 668, 669, 670, 671, 672, 673, 674, 675, 676, 677, 678, 679, 680, 681, 682, 683, 684, 685, 686, 687, 688, 689, 690, 691, 692, 693, 694, 695, 696, 697, 698, 699, 700, 701, 702, 703, 704, 705, 706, 707, 708, 709, 710, 711, 712, 713, 714, 715, 716, 717, 718, 719, 720, 721, 722, 723, 724, 725, 726, 727, 728, 729, 730, 731, 732, 733, 734, 735, 736, 737, 738, 739, 740, 741, 742, 743, 744, 745, 746, 747, 748, 749, 750, 751, 752, 753, 754, 755, 756, 757, 758, 759, 760, 761, 762, 763, 764, 765, 766, 767, 768, 769, 770, 771, 772, 773, 774, 775, 776, 777, 778, 779, 780, 781, 782, 783, 784, 785, 786, 787, 788, 789, 790, 791, 792, 793, 794, 795, 796, 797, 798, 799, 800, 801, 802, 803, 804, 805, 806, 807, 808, 809, 810, 811, 812, 813, 814, 815, 816, 817, 818, 819, 820, 821, 822, 823, 824, 825, 826, 827, 828, 829, 830, 831, 832, 833, 834, 835, 836, 837, 838, 839, 840, 841, 842, 843, 844, 845, 846, 847, 848, 849, 850, 851, 852, 853, 854, 855, 856, 857, 858, 859, 860, 861, 862, 863, 864, 865, 866, 867, 868, 869, 870, 871, 872, 873, 874, 875, 876, 877, 878, 879, 880, 881, 882, 883, 884, 885, 886, 887, 888, 889, 890, 891, 892, 893, 894, 895, 896, 897, 898, 899, 900, 901, 902, 903, 904, 905, 906, 907, 908, 909, 910, 911, 912, 913, 914, 915, 916, 917, 918, 919, 920, 921, 922, 923, 924, 925, 926, 927, 928, 929, 930, 931, 932, 933, 934, 935, 936, 937, 938, 939, 940, 941, 942, 943, 944, 945, 946, 947, 948, 949, 950, 951, 952, 953, 954, 955, 956, 957, 958, 959, 960, 961, 962, 963, 964, 965, 966, 967, 968, 969, 970, 971, 972, 973, 974, 975, 976, 977, 978, 979, 980, 981, 982, 983, 984, 985, 986, 987, 988, 989, 990, 991, 992, 993, 994, 995, 996, 997, 998, 999, 1000, 1001, 1002, 1003, 1004, 1005, 1006, 1007, 1008, 1009, 1010, 1011, 1012, 1013, 1014, 1015, 1016, 1017, 1018, 1019, 1020, 1021, 1022, 1023, 1024, 1025, 1026, 1027, 1028, 1029, 1030, 1031, 1032, 1033, 1034, 1035, 1036, 1037, 1038, 1039, 1040, 1041, 1042, 1043, 1044, 1045, 1046, 1047, 1048, 1049, 1050, 1051, 1052, 1053, 1054, 1055, 1056, 1057, 1058, 1059, 1060, 1061, 1062, 1063, 1064, 1065, 1066, 1067, 1068, 1069, 1070, 1071, 1072, 1073, 1074, 1075, 1076, 1077, 1078, 1079, 1080, 1081, 1082, 1083, 1084, 1085, 1086, 1087, 1088, 1089, 1090, 1091, 1092, 1093, 1094, 1095, 1096, 1097, 1098, 1099, 1100, 1101, 1102, 1103, 1104, 1105, 1106, 1107, 1108, 1109, 1110, 1111, 1112, 1113, 1114, 1115, 1116, 1117, 1118, 1119, 1120, 1121, 1122, 1123, 1124, 1125, 1126, 1127, 1128, 1129, 1130, 1131, 1132, 1133, 1134, 1135, 1136, 1137, 1138, 1139, 1140, 1141, 1142, 1143, 1144, 1145, 1146, 1147, 1148, 1149, 1150, 1151, 1152, 1153, 1154, 1155, 1156, 1157, 1158, 1159, 1160, 1161, 1162, 1163, 1164, 1165, 1166, 1167, 1168, 1169, 1170, 1171, 1172, 1173, 1174, 1175, 1176, 1177, 1178, 1179, 1180, 1181, 1182, 1183, 1184, 1185, 1186, 1187, 1188, 1189, 1190, 1191, 1192, 1193, 1194, 1195, 1196, 1197, 1198, 1199, 1200, 1201, 1202, 1203, 1204, 1205, 1206, 1207, 1208, 1209, 1210, 1211, 1212, 1213, 1214, 1215, 1216, 1217, 1218, 1219, 1220, 1221, 1222, 1223, 1224, 1225, 1226, 1227, 1228, 1229, 1230, 1231, 1232, 1233, 1234, 1235, 1236, 1237, 1238, 1239, 1240, 1241, 1242, 1243, 1244, 1245, 1246, 1247, 1248, 1249, 1250, 1251, 1252, 1253, 1254, 1255, 1256, 1257, 1258, 1259, 1260, 1261, 1262, 1263, 1264, 1265, 1266, 1267, 1268, 1269, 1270, 1271, 1272, 1273, 1274, 1275, 1276, 1277, 1278, 1279, 1280, 1281, 1282, 1283, 1284, 1285, 1286, 1287, 1288, 1289, 1290, 1291, 1292, 1293, 1294, 1295, 1296, 1297, 1298, 1299, 1300, 1301, 1302, 1303, 1304, 1305, 1306, 1307, 1308, 1309, 1310, 1311, 1312, 1313, 1314, 1315, 1316, 1317, 1318, 1319, 1320, 1321, 1322, 1323, 1324, 1325, 1326, 1327, 1328, 1329, 1330, 1331, 1332, 1333, 1334, 1335, 1336, 1337, 1338, 1339, 1340, 1341, 1342, 1343, 1344, 1345, 1346, 1347, 1348, 1349, 1350, 1351, 1352, 1353, 1354, 1355, 1356, 1357, 1358, 1359, 1360, 1361, 1362, 1363, 1364, 1365, 1366, 1367, 1368, 1369, 1370, 1371, 1372, 1373, 1374, 1375, 1376, 1377, 1378, 1379, 1380, 1381, 1382, 1383, 1384, 1385, 1386, 1387, 1388, 1389, 1390, 1391, 1392, 1393, 1394, 1395, 1396, 1397, 1398, 1399, 1400, 1401, 1402, 1403, 1404, 1405, 1406, 1407, 1408, 1409, 1410, 1411, 1412, 1413, 1414, 1415, 1416, 1417, 1418, 1419, 1420, 1421, 1422, 1423, 1424, 1425, 1426, 1427, 1428, 1429, 1430, 1431, 1432, 1433, 1434, 1435, 1436, 1437, 1438, 1439, 1440, 1441, 1442, 1443, 1444, 1445, 1446, 1447, 1448, 1449, 1450, 1451, 1452, 1453, 1454, 1455, 1456, 1457, 1458, 1459, 1460, 1461, 1462, 1463, 1464, 1465, 1466, 1467, 1468, 1469, 1470, 1471, 1472, 1473, 1474, 1475, 1476, 1477, 1478, 1479, 1480, 1481, 1482, 1483, 1484, 1485, 1486, 1487, 1488, 1489, 1490, 1491, 1492, 1493, 1494, 1495, 1496, 1497, 1498, 1499, 1500, 1501, 1502, 1503, 1504, 1505, 1506, 1507, 1508, 1509, 1510, 1511, 1512, 1513, 1514, 1515, 1516, 1517, 1518, 1519, 1520, 1521, 1522, 1523, 1524, 1525, 1526, 1527, 1528, 1529, 1530, 1531, 1532, 1533, 1534, 1535, 1536, 1537, 1538, 1539, 1540, 1541, 1542, 1543, 1544, 1545, 1546, 1547, 1548, 1549, 1550, 1551, 1552, 1553, 1554, 1555, 1556, 1557, 1558, 1559, 1560, 1561, 1562, 1563, 1564, 1565, 1566, 1567, 1568, 1569, 1570, 1571, 1572, 1573, 1574, 1575, 1576, 1577, 1578, 1579, 1580, 1581, 1582, 1583, 1584, 1585, 1586, 1587, 1588, 1589, 1590, 1591, 1592, 1593, 1594, 1595, 1596, 1597, 1598, 1599, 1600, 1601, 1602, 1603, 1604, 1605, 1606, 1607, 1608, 1609, 1610, 1611, 1612, 1613, 1614, 1615, 1616, 1617, 1618, 1619, 1620, 1621, 1622, 1623, 1624, 1625, 1626, 1627, 1628, 1629, 1630, 1631, 1632, 1633, 1634, 1635, 1636, 1637, 1638, 1639, 1640, 1641, 1642, 1643, 1644, 1645, 1646, 1647, 1648, 1649, 1650, 1651, 1652, 1653, 1654, 1655, 1656, 1657, 1658, 1659, 1660, 1661, 1662, 1663, 1664, 1665, 1666, 1667, 1668, 1669, 1670, 1671, 1672, 1673, 1674, 1675, 1676, 1677, 1678, 1679, 1680, 1681, 1682, 1683, 1684, 1685, 1686, 1687, 1688, 1689, 1690, 1691, 1692, 1693, 1694, 1695, 1696, 1697, 1698, 1699, 1700, 1701, 1702, 1703, 1704, 1705, 1706, 1707, 1708, 1709, 1710, 1711, 1712, 1713, 1714, 1715, 1716, 1717, 1718, 1719, 1720, 1721, 1722, 1723, 1724, 1725, 1726, 1727, 1728, 1729, 1730, 1731, 1732, 1733, 1734, 1735, 1736, 1737, 1738, 1739, 1740, 1741, 1742, 1743, 1744, 1745, 1746, 1747, 1748, 1749, 1750, 1751, 1752, 1753, 1754, 1755, 1756, 1757, 1758, 1759, 1760, 1761, 1762, 1763, 1764, 1765, 1766, 1767, 1768, 1769, 1770, 1771, 1772, 1773, 1774, 1775, 1776, 1777, 1778, 1779, 1780, 1781, 1782, 1783, 1784, 1785, 1786, 1787, 1788, 1789, 1790, 1791, 1792, 1793, 1794, 1795, 1796, 1797, 1798, 1799, 1800, 1801, 1802, 1803, 1804, 1805, 1806, 1807, 1808, 1809, 1810, 1811, 1812, 1813, 1814, 1815, 1816, 1817, 1818, 1819, 1820, 1821, 1822, 1823, 1824, 1825, 1826, 1827, 1828, 1829, 1830, 1831, 1832, 1833, 1834, 1835, 1836, 1837, 1838, 1839, 1840, 1841, 1842, 1843, 1844, 1845, 1846, 1847, 1848, 1849, 1850, 1851, 1852, 1853, 1854, 1855, 1856, 1857, 1858, 1859, 1860, 1861, 1862, 1863, 1864, 1865, 1866, 1867, 1868, 1869, 1870, 1871, 1872, 1873, 1874, 1875, 1876, 1877, 1878, 1879, 1880, 1881, 1882, 1883, 1884, 1885, 1886, 1887, 1888, 1889, 1890, 1891, 1892, 1893, 1894, 1895, 1896, 1897, 1898, 1899, 1900, 1901, 1902, 1903, 1904, 1905, 1906, 1907, 1908, 1909, 1910, 1911, 1912, 1913, 1914, 1915, 1916, 1917, 1918, 1919, 1920, 1921, 1922, 1923, 1924, 1925, 1926, 1927, 1928, 1929, 1930, 1931, 1932, 1933, 1934, 1935, 1936, 1937, 1938, 1939, 1940, 1941, 1942, 1943, 1944, 1945, 1946, 1947, 1948, 1949, 1950, 1951, 1952, 1953, 1954, 1955, 1956, 1957, 1958, 1959, 1960, 1961, 1962, 1963, 1964, 1965, 1966, 1967, 1968, 1969, 1970, 1971, 1972, 1973, 1974, 1975, 1976, 1977, 1978, 1979, 1980, 1981, 1982, 1983, 1984, 1985, 1986, 1987, 1988, 1989, 1990, 1991, 1992, 1993, 1994, 1995, 1996, 1997, 1998, 1999, 2000, 2001, 2002, 2003, 2004, 2005, 2006, 2007, 2008, 2009, 2010, 2011, 2012, 2013, 2014, 2015, 2016, 2017, 2018, 2019, 2020, 2021, 2022, 2023, 2024, 2025, 2026, 2027, 2028, 2029, 2030, 2031, 2032, 2033, 2034, 2035, 2036, 2037, 2038, 2039, 2040, 2041, 2042, 2043, 2044, 2045, 2046, 2047, 2048, 2049, 2050, 2051, 2052, 2053, 2054, 2055, 2056, 2057, 2058, 2059, 2060, 2061, 2062, 2063, 2064, 2065, 2066, 2067, 2068, 2069, 2070, 2071, 2072, 2073, 2074, 2075, 2076, 2077, 2078, 2079, 2080, 2081, 2082, 2083, 2084, 2085, 2086, 2087, 2088, 2089, 2090, 2091, 2092, 2093, 2094, 2095, 2096, 2097, 2098, 2099, 2100, 2101, 2102, 2103, 2104, 2105, 2106, 2107, 2108, 2109, 2110, 2111, 2112, 2113, 2114, 2115, 2116, 2117, 2118, 2119, 2120, 2121, 2122, 2123,





DATE REVIEW 05/12/2010

DRAWING NO. 16

REV. 2 DATE REVISIONS

BY

CLIENT

DRAWN

DATE

JOB NO.

DRAWING NO.

**Clark, Fortune, McDonald & Associates**

303 Lower Shimmer Road, P.O. Box 553 Queenstown  
 Tel. (03) 941-6044, Fax (03) 942-1066, Email [info@cfm.co.nz](mailto:info@cfm.co.nz)  
 21 Rizee Crescent, P.O. Box 550, Whangarei  
 Tel. (03) 943-4968, Fax (03) 943-4751, Email [whangarei@cfm.co.nz](mailto:whangarei@cfm.co.nz)  
 Tel. (03) 970-1582, Fax (03) 970-1583, Email [admin@cfm.co.nz](mailto:admin@cfm.co.nz)

**FIGURE 16:  
 VISIBILITY ANALYSIS -  
 SHOTOVER DELTA**

**LADIES MILE PARTNERSHIP**

Note: This drawing is a plan view of the site and does not show any other information. It is intended to provide a general overview of the site and is not to be used for any other purpose. The information contained herein is for reference only and does not constitute a contract. The information contained herein is the property of Clark, Fortune, McDonald & Associates and is not to be used for any other purpose without the written consent of Clark, Fortune, McDonald & Associates.

Drawn: EMD

Date: 10.09.08

Scale: 1:3750

1:7500

Signed: [Signature]

Date: [Date]

Scale: 1:3750

1:7500

Designed: [Signature]

Date: [Date]

Scale: 1:3750

1:7500

Checked: [Signature]

Date: [Date]

Scale: 1:3750

1:7500

Approved: [Signature]

Date: [Date]

Scale: 1:3750

1:7500

MSL

A









Clark Fortunate McDonald & Associates  
 100 Lower Shimmer Road, P.O. Box 551 Queensland  
 QLD 4034-1504, Fax (03)42-2166, Email admin@cfma.com.au  
 21 Beech Green, P.O. Box 550, Wavinda  
 QLD 4034-4446, Fax (03)43-4445, Email admin@cfma.com.au  
 Shop 2, Otago House, 475 Murray Street, P.O. Box 5500  
 QLD 4032-1582, Fax (03)20-1583, Email admin@cfma.com.au

Rev.	Date	Revisions/Comments

**FIGURE 18:**  
**VISIBILITY ANALYSIS -**  
**FERRY HILL**

**KEY**

- VIEW POINT FROM ROAD
- SIGHT LINES

Client	LADIES MILE PARTNERSHIP
Drawn	ESMD
Checked	ESMD
Date	10.05.08
Scale	1:10270
Drawn & Checked	ESMD
MSL	18
	1-3750
	1-7500
	A

NOTE: All measurements taken from the top of the road surface. The data on this plan has been derived from a combination of field measurements and existing data. The data is for information only and should not be used for any other purpose. The data is for information only and should not be used for any other purpose. The data is for information only and should not be used for any other purpose.









**KEY**  
 ● VIEW POINT FROM ROAD  
 — SIGHT LINES

**FIGURE 20:**  
**VISIBILITY ANALYSIS -**  
**KAWARAU RIVER**

**Client:** Fortune McDonald & Associates  
 300 Lower Shilshier Road, PO Box 553 Queenstown  
 Tel: (03) 941-5044, Fax: (03) 942-1066, Email: [info@fma.co.nz](mailto:info@fma.co.nz)  
 21 Rees Street, PO Box 550, Waiwaka  
 Tel: (03) 943-4966, Fax: (03) 943-4975, Email: [info@fma.co.nz](mailto:info@fma.co.nz)  
 Tel: (03) 943-4966, Fax: (03) 943-4975, Email: [info@fma.co.nz](mailto:info@fma.co.nz)

Rev.	Date	Revision Details	By

**Client:**  
**LADIES MILE PARTNERSHIP**

Scale	Date	Scale	Scale	Scale
BM50	14.09.08	1:3750	1:7500	MSL

**Notes:**  
 All dimensions shown are in metres unless otherwise stated.  
 All elevations are in metres above sea level unless otherwise stated.  
 All bearings are in degrees true unless otherwise stated.  
 All bearings are in degrees true unless otherwise stated.  
 All bearings are in degrees true unless otherwise stated.  
 All bearings are in degrees true unless otherwise stated.





**FIGURE 21:**  
**LANDSCAPE ABSORPTION PLAN -**  
**KIDSON LANDSCAPE CONSULTING**

**KEY:**

- T1: HV/H Terrace 1: High Visibility/High Absorption
- T2: LV/H Terrace 2: Low Visibility/High Absorption
- T3: LV/H Terrace 3: Low Visibility/High Absorption
- T4: MV/H Terrace 4: Medium Visibility/High Absorption
- T5: MV/M Terrace 5: Medium Visibility/Medium Absorption
- T6: MV/L Terrace 6: High Visibility/Low Absorption
- T7: HV/L Terrace 7: High Visibility/Low Absorption
- T8: MV/N Terrace 8: Medium Visibility/No Absorption
- T9: HV/L Terrace 9: High Visibility/Low Absorption
- T10: HV/L Terrace 10: High Visibility/Low Absorption
- T11: HV/L Terrace 11: High Visibility/Low Absorption
- T12: HV/L Terrace 12: High Visibility/Low Absorption
- T13: HV/L Terrace 13: High Visibility/Low Absorption
- T14: HV/L Terrace 14: High Visibility/Low Absorption
- T15: HV/L Terrace 15: High Visibility/Low Absorption
- T16: HV/L Terrace 16: High Visibility/Low Absorption
- T17: HV/L Terrace 17: High Visibility/Low Absorption
- T18: HV/L Terrace 18: High Visibility/Low Absorption
- T19: HV/L Terrace 19: High Visibility/Low Absorption
- T20: HV/L Terrace 20: High Visibility/Low Absorption
- T21: HV/L Terrace 21: High Visibility/Low Absorption
- T22: HV/L Terrace 22: High Visibility/Low Absorption
- T23: HV/L Terrace 23: High Visibility/Low Absorption
- T24: HV/L Terrace 24: High Visibility/Low Absorption
- T25: HV/L Terrace 25: High Visibility/Low Absorption
- T26: HV/L Terrace 26: High Visibility/Low Absorption
- T27: HV/L Terrace 27: High Visibility/Low Absorption
- T28: HV/L Terrace 28: High Visibility/Low Absorption
- T29: HV/L Terrace 29: High Visibility/Low Absorption
- T30: HV/L Terrace 30: High Visibility/Low Absorption
- T31: HV/L Terrace 31: High Visibility/Low Absorption
- T32: HV/L Terrace 32: High Visibility/Low Absorption
- T33: HV/L Terrace 33: High Visibility/Low Absorption
- T34: HV/L Terrace 34: High Visibility/Low Absorption
- T35: HV/L Terrace 35: High Visibility/Low Absorption
- T36: HV/L Terrace 36: High Visibility/Low Absorption
- T37: HV/L Terrace 37: High Visibility/Low Absorption
- T38: HV/L Terrace 38: High Visibility/Low Absorption
- T39: HV/L Terrace 39: High Visibility/Low Absorption
- T40: HV/L Terrace 40: High Visibility/Low Absorption
- T41: HV/L Terrace 41: High Visibility/Low Absorption
- T42: HV/L Terrace 42: High Visibility/Low Absorption
- T43: HV/L Terrace 43: High Visibility/Low Absorption
- T44: HV/L Terrace 44: High Visibility/Low Absorption
- T45: HV/L Terrace 45: High Visibility/Low Absorption
- T46: HV/L Terrace 46: High Visibility/Low Absorption
- T47: HV/L Terrace 47: High Visibility/Low Absorption
- T48: HV/L Terrace 48: High Visibility/Low Absorption
- T49: HV/L Terrace 49: High Visibility/Low Absorption
- T50: HV/L Terrace 50: High Visibility/Low Absorption
- T51: HV/L Terrace 51: High Visibility/Low Absorption
- T52: HV/L Terrace 52: High Visibility/Low Absorption
- T53: HV/L Terrace 53: High Visibility/Low Absorption
- T54: HV/L Terrace 54: High Visibility/Low Absorption
- T55: HV/L Terrace 55: High Visibility/Low Absorption
- T56: HV/L Terrace 56: High Visibility/Low Absorption
- T57: HV/L Terrace 57: High Visibility/Low Absorption
- T58: HV/L Terrace 58: High Visibility/Low Absorption
- T59: HV/L Terrace 59: High Visibility/Low Absorption
- T60: HV/L Terrace 60: High Visibility/Low Absorption
- T61: HV/L Terrace 61: High Visibility/Low Absorption
- T62: HV/L Terrace 62: High Visibility/Low Absorption
- T63: HV/L Terrace 63: High Visibility/Low Absorption
- T64: HV/L Terrace 64: High Visibility/Low Absorption
- T65: HV/L Terrace 65: High Visibility/Low Absorption
- T66: HV/L Terrace 66: High Visibility/Low Absorption
- T67: HV/L Terrace 67: High Visibility/Low Absorption
- T68: HV/L Terrace 68: High Visibility/Low Absorption
- T69: HV/L Terrace 69: High Visibility/Low Absorption
- T70: HV/L Terrace 70: High Visibility/Low Absorption
- T71: HV/L Terrace 71: High Visibility/Low Absorption
- T72: HV/L Terrace 72: High Visibility/Low Absorption
- T73: HV/L Terrace 73: High Visibility/Low Absorption
- T74: HV/L Terrace 74: High Visibility/Low Absorption
- T75: HV/L Terrace 75: High Visibility/Low Absorption
- T76: HV/L Terrace 76: High Visibility/Low Absorption
- T77: HV/L Terrace 77: High Visibility/Low Absorption
- T78: HV/L Terrace 78: High Visibility/Low Absorption
- T79: HV/L Terrace 79: High Visibility/Low Absorption
- T80: HV/L Terrace 80: High Visibility/Low Absorption
- T81: HV/L Terrace 81: High Visibility/Low Absorption
- T82: HV/L Terrace 82: High Visibility/Low Absorption
- T83: HV/L Terrace 83: High Visibility/Low Absorption
- T84: HV/L Terrace 84: High Visibility/Low Absorption
- T85: HV/L Terrace 85: High Visibility/Low Absorption
- T86: HV/L Terrace 86: High Visibility/Low Absorption
- T87: HV/L Terrace 87: High Visibility/Low Absorption
- T88: HV/L Terrace 88: High Visibility/Low Absorption
- T89: HV/L Terrace 89: High Visibility/Low Absorption
- T90: HV/L Terrace 90: High Visibility/Low Absorption
- T91: HV/L Terrace 91: High Visibility/Low Absorption
- T92: HV/L Terrace 92: High Visibility/Low Absorption
- T93: HV/L Terrace 93: High Visibility/Low Absorption
- T94: HV/L Terrace 94: High Visibility/Low Absorption
- T95: HV/L Terrace 95: High Visibility/Low Absorption
- T96: HV/L Terrace 96: High Visibility/Low Absorption
- T97: HV/L Terrace 97: High Visibility/Low Absorption
- T98: HV/L Terrace 98: High Visibility/Low Absorption
- T99: HV/L Terrace 99: High Visibility/Low Absorption
- T100: HV/L Terrace 100: High Visibility/Low Absorption

■ St. A. Stopping Land - low absorption capacity  
 ■ Buffer/ open landscaped to buffer to neighbours  
 ■ Study Area Boundary

**KIDSON LANDSCAPE CONSULTING**  
 10000 16th Avenue SW, Suite 100  
 Richmond, BC V6V 2E9  
 Tel: 604-273-8888  
 Fax: 604-273-8889  
 Email: info@kidsonlandscape.com

Client	LADIES MILE PARTNERSHIP
Project	10270
Scale	1:3750
Date	15.08.09
Drawn by	MSL
Checked by	B

**Clark Fortune McDonald & Associates**  
 309 Lower Stouffer Road, P.O. Box 553 Quetzalton  
 Tel: (314) 41-5094, Fax: (314) 42-2088, Email: admin@cfma.com  
 174 (314) 41-4444, Fax: (314) 41-4445, Email: admin@cfma.com  
 Shop 2, Chapo House, 475 Healey Place, P.O. Box 5966

Rev.	Date	Revision Details
1		
2		
3		
4		
5		
6		
7		
8		
9		
10		





**Key**

- Existing flooding
- - - Proposed walkways
- Open Space

**FIGURE 22:  
PUBLIC ACCESS, RECREATION &  
OPEN SPACE**

**Clark Fortune McDonald & Associates**  
 309 Lower Siltcoast Road, P.O. Box 553 Queenstown  
 Tel: (03) 941-6844, Fax: (03) 942-1066, Email: admin@cmf.co.nz  
 21 Race Crescent, P.O. Box 550, Waiuku  
 Tel: (03) 943-4466, Fax: (03) 943-4448, Email: admin@cmf.co.nz  
 P.O. Box 5, South Bay, P.O. Box 1583, Email: admin@cmf.co.nz

Rev.	Date	Revisions

Client	LADIES MILE PARTNERSHIP	
Note	All dimensions shown are in metric unless otherwise stated. All measurements are to the centre of the road. All measurements are to the centre of the road. All measurements are to the centre of the road. All measurements are to the centre of the road.	
Drawn	Signed	
GSMD		
Designed	Signed	
TS		
Date	15.09.09	
Scale	10270	22
Scale	1:3750	1:7500
Scale	MSL	A



**Clark Fortune McDonald & Associates**  
 309 Lower Shiloh Road, P.O. Box 553, Queensland  
 Tel: (0)3441-6044, Fax: (0)3441-1066, Email: admin@cfma.co.nz  
 21 Hecce Crescent, P.O. Box 550, Manuka  
 Tel: (0)3441-6044, Fax: (0)3441-1066, Email: admin@cfma.co.nz  
 Shop 2, 100 The Arcade, 475 Main Street, P.O. Box 580  
 Tel: (0)3470-1582, Fax: (0)3470-1583, Email: admin@cfma.co.nz




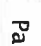
Rev.	Date	Revision Details

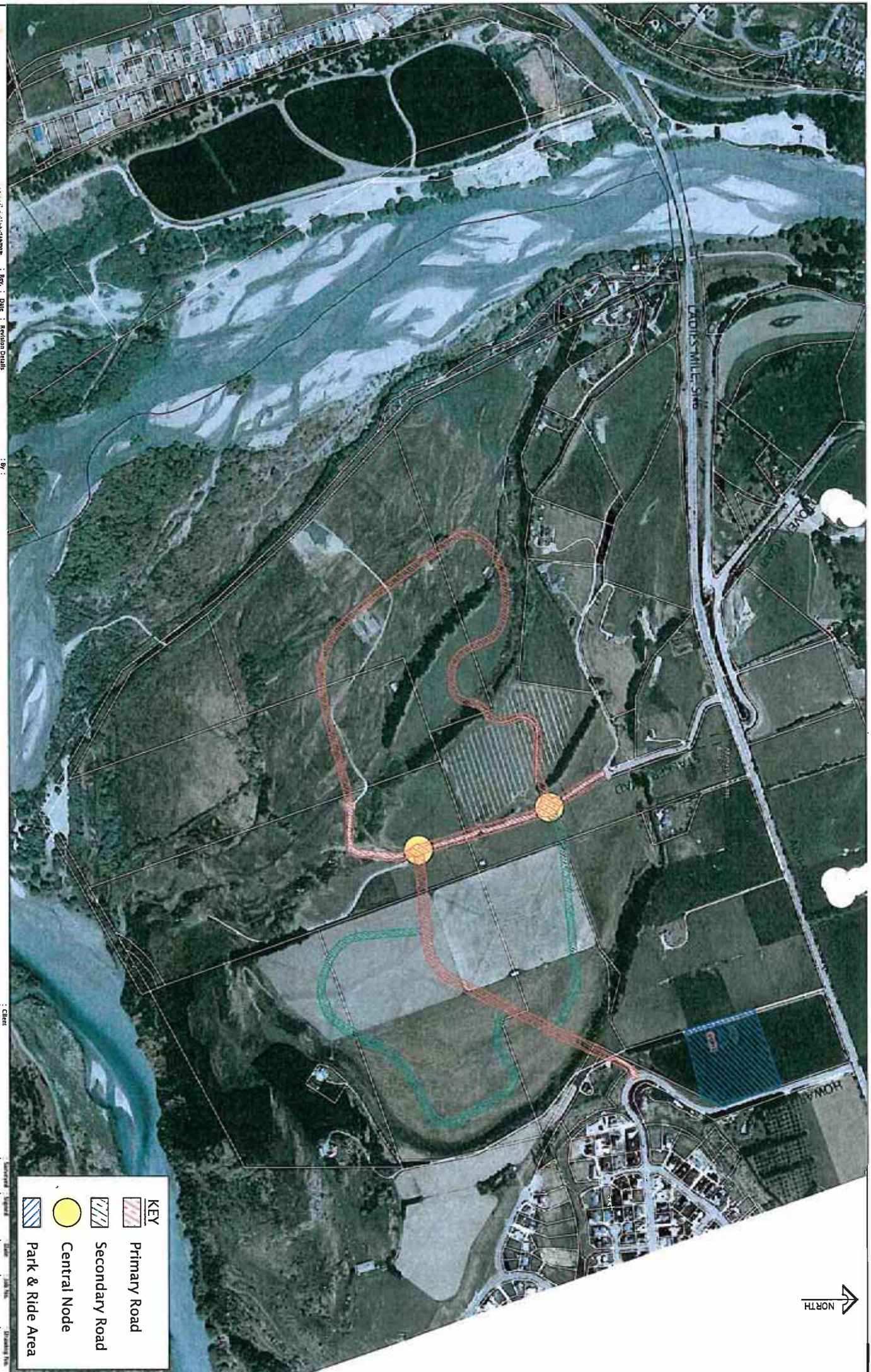
**FIGURE 23:  
 VEHICLE ACCESS CONNECTIONS  
 AND PARK & RIDE**

Client: **LADIES MILE PARTNERSHIP**

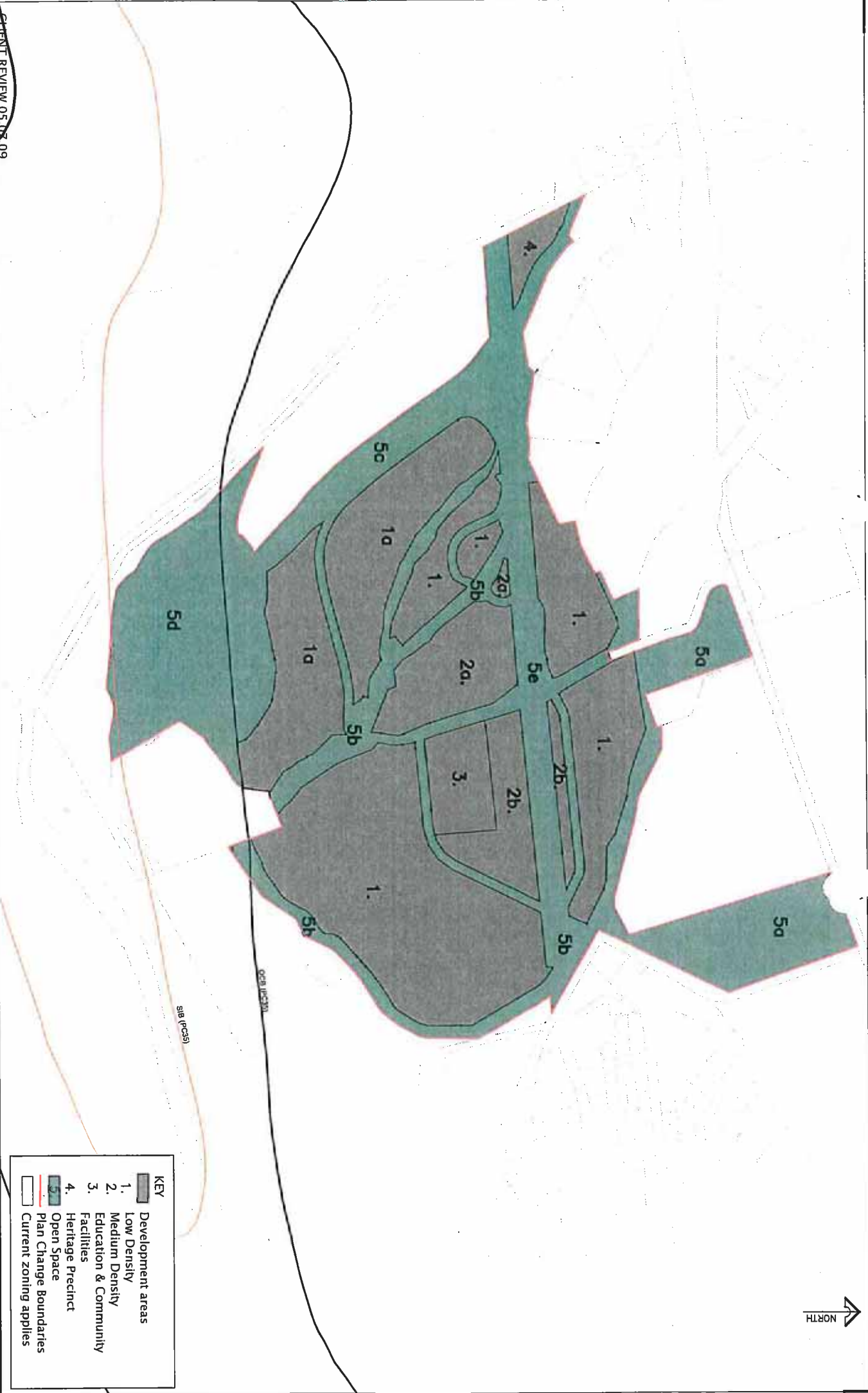
Drawn	Signed	Date	Scale	Sheet No.
ESMP		17/09/09	1:3750	23
Designed	Signed	Date	Drawn & Level	Rev.
			MSL	A

**KEY**

-  Primary Road
-  Secondary Road
-  Central Node
-  Park & Ride Area







KEY	
[Green Box]	4. Open Space Heritage Precinct
[Grey Box]	Development areas
[White Box]	Current zoning applies
[Red Outline]	Plan Change Boundaries
[Blue Outline]	Facilities
[Yellow Outline]	Education & Community
[Light Green Outline]	Medium Density
[Light Blue Outline]	Low Density

CLIENT REVIEW 05.07.09

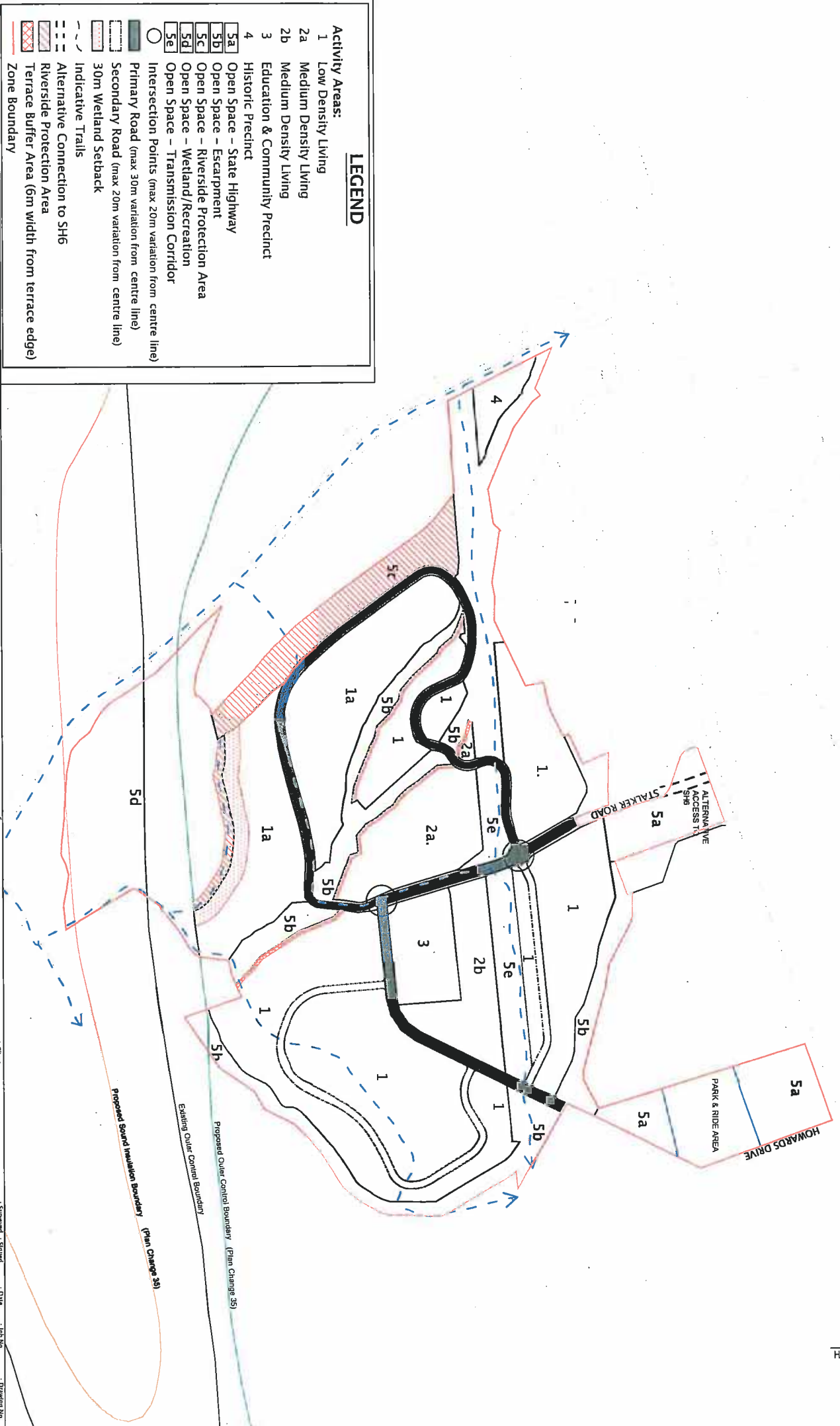
**Clark Fortune McDonald & Associates**  
 309 Lower Shireview Road, PO Box 553 Queensland  
 Tel: (03)443-4444, Fax: (03)443-4443, Email: admin@cfm.com.au  
 Tel: (03)443-4444, Fax: (03)443-4443, Email: admin@cfm.com.au  
 Shop 2, Orlong House, 475 Mundy Place, P.O. Box 5560  
 Tel: (03)472-1502, Fax: (03)472-1503, Email: admin@cfm.com.au

Rev	Date	Revision Details	By
1	05.07.09	Add Air Noise boundaries	AD
2	05.07.09	Include Wetland in plan Change Areas	AD
3	05.07.09	Include Wetland in plan Change Areas	AD

FIGURE 24:  
LAND USE STRATEGY

Client		Submitted		Date		Job No.		Drawing No.	
LADIES MILE PARTNERSHIP		signed	signed	11.09.09	10.07.09	10270	24	1-3750	1-7500
<small>Notes: 1. This drawing is for the development of the Ladies Mile Partnership. 2. The development is subject to the approval of the relevant authorities. 3. The development is subject to the approval of the relevant authorities. 4. The development is subject to the approval of the relevant authorities. 5. The development is subject to the approval of the relevant authorities.</small>		signed	signed	11.09.09	10.07.09	10270	24	1-3750	1-7500
<small>Notes: 1. This drawing is for the development of the Ladies Mile Partnership. 2. The development is subject to the approval of the relevant authorities. 3. The development is subject to the approval of the relevant authorities. 4. The development is subject to the approval of the relevant authorities. 5. The development is subject to the approval of the relevant authorities.</small>		signed	signed	11.09.09	10.07.09	10270	24	1-3750	1-7500





**LEGEND**

- Activity Areas:**
- 1 Low Density Living
  - 2a Medium Density Living
  - 2b Medium Density Living
  - 3 Education & Community Precinct
  - 4 Historic Precinct
  - 5a Open Space – State Highway
  - 5b Open Space – Escarpment
  - 5c Open Space – Riverside Protection Area
  - 5d Open Space – Wetland/Recreation
  - 5e Open Space – Transmission Corridor
- Intersection Points (max 20m variation from centre line)
- █ Primary Road (max 30m variation from centre line)
  - █ Secondary Road (max 20m variation from centre line)
  - █ 30m Wetland Setback
  - █ Indicative Trails
  - █ Alternative Connection to SH6
  - █ Riverside Protection Area
  - █ Terrace Buffer Area (6m width from terrace edge)
- Zone Boundary

**Clark Fortune McDonald & Associates**  
 309 Levee Road, P.O. Box 533, Queensland  
 Tel: 037443-4444, Fax: 037443-4445, Email: admin@cfma.com.au  
 Shop 2, Onge House, 475 Monro Place, P.O. Box 5960  
 Tel: 037470-1588, Fax: 037470-1589, Email: admin@cfma.com.au

Rev.	Date	Revision Details

**FIGURE 25:**  
**SHOTOVER COUNTRY STRUCTURE PLAN**

Client	LADIES MILE PARTNERSHIP	Drawn	ESMD	Scale	1:3750
Site	Shotover Country Structure Plan, Plan Change 35, Shotover Country, Queensland	Signed	ESMD	Date	11/09
Notes	1. All areas shown are subject to the Shotover Country Structure Plan, Plan Change 35, Queensland.	Designed	ESMD	Scale	1:7500
Author	Clark Fortune McDonald & Associates	Signed	ESMD	Date	11/09
Checked	Clark Fortune McDonald & Associates	Designed	ESMD	Scale	1:7500
Drawn	Clark Fortune McDonald & Associates	Signed	ESMD	Date	11/09
Client	LADIES MILE PARTNERSHIP	Job No.	10270	Drawing No.	25
Scale	1:3750	Author & Lead	MSL	Rev.	F