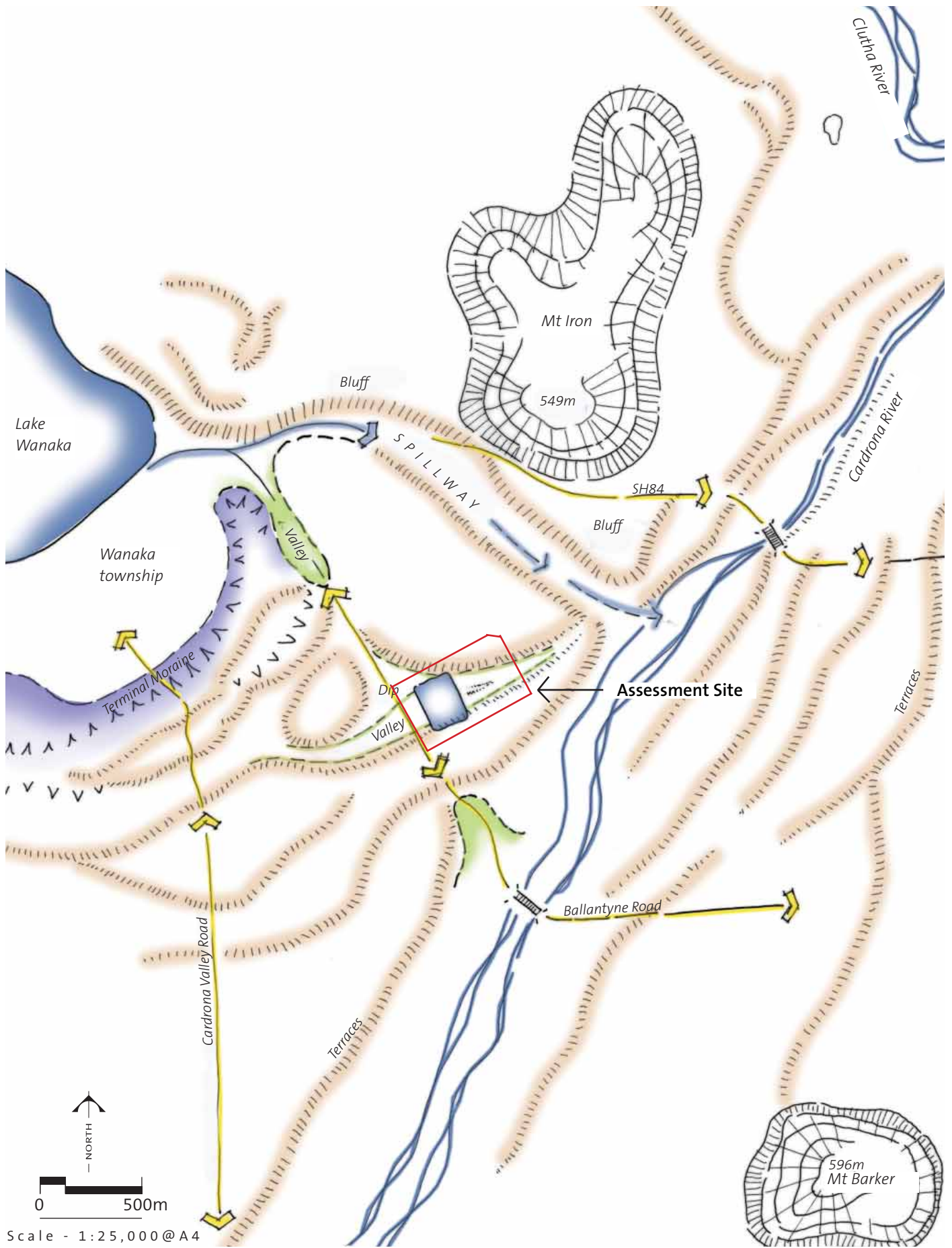
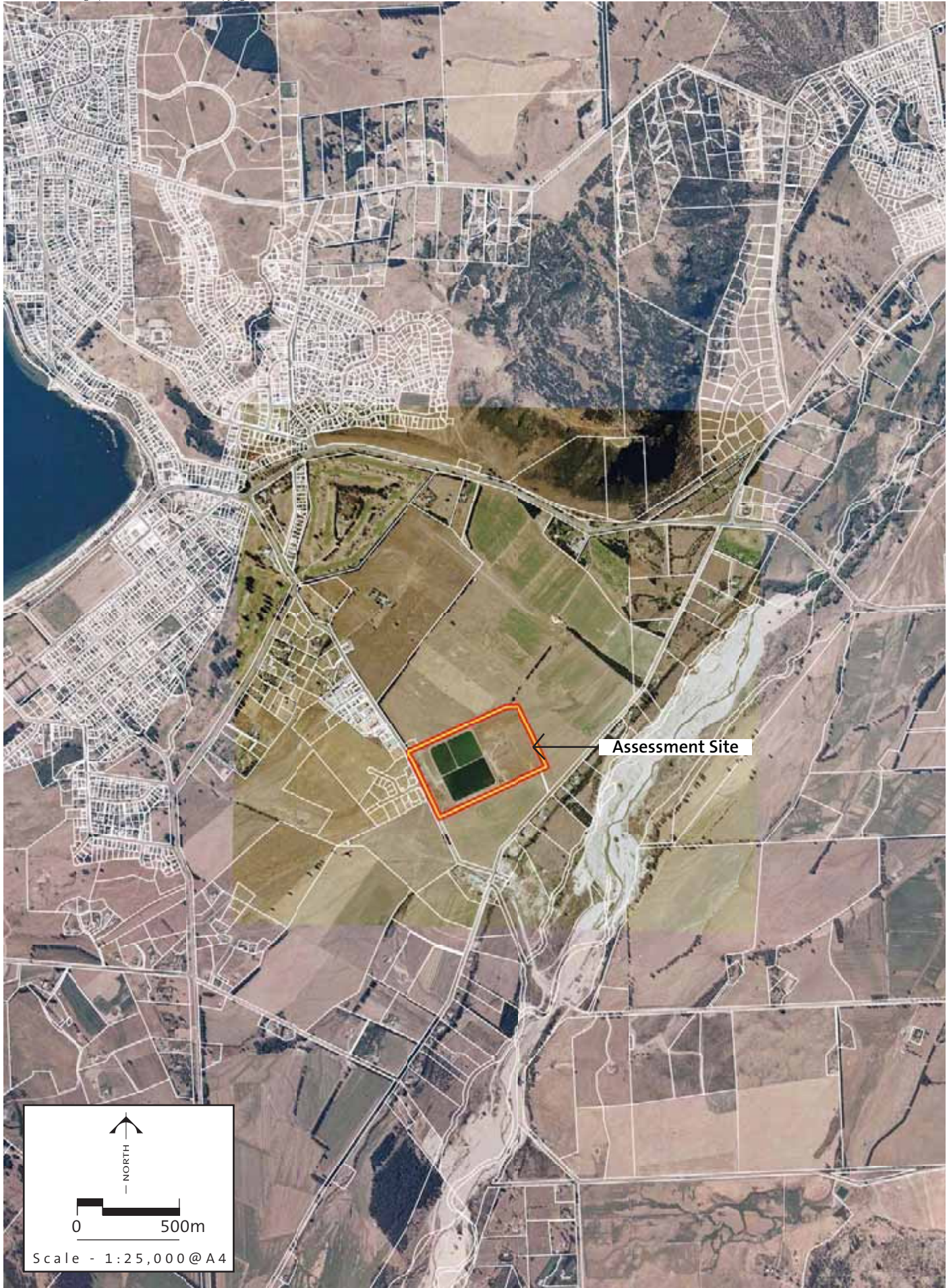
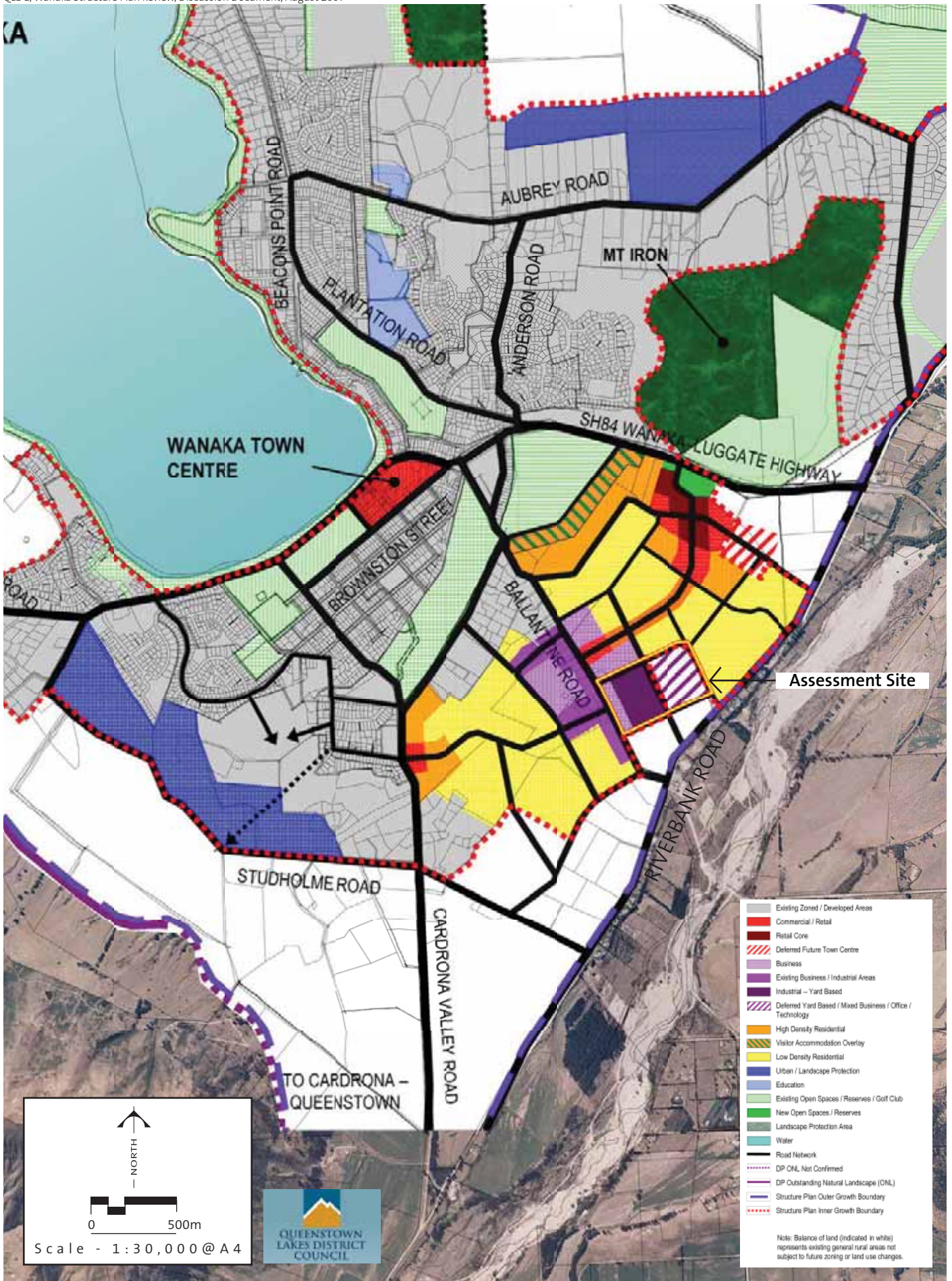


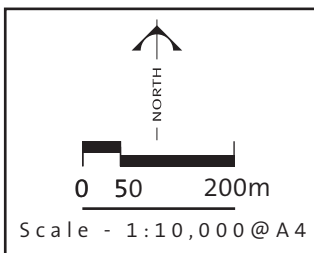
Assessment Site

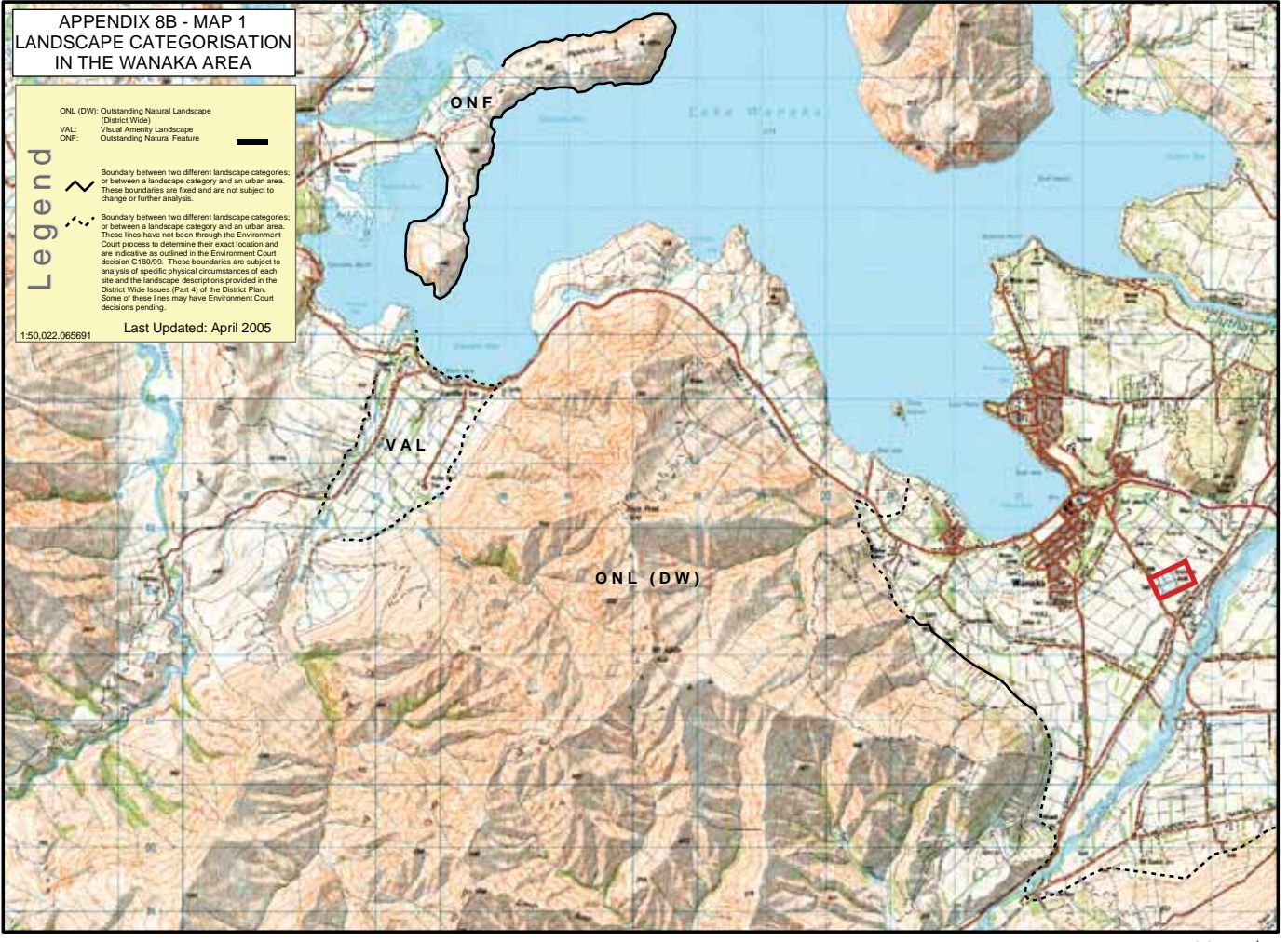




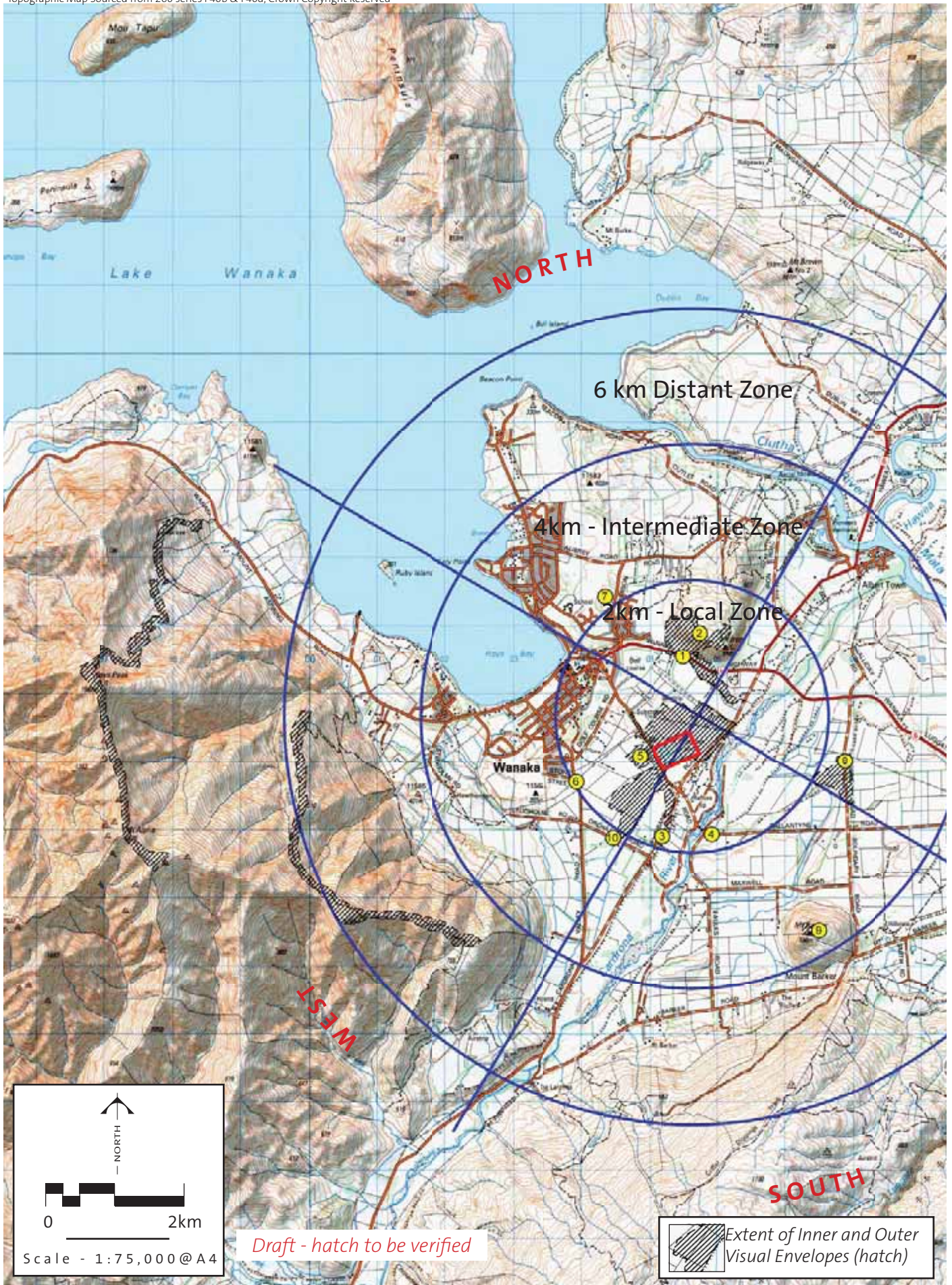














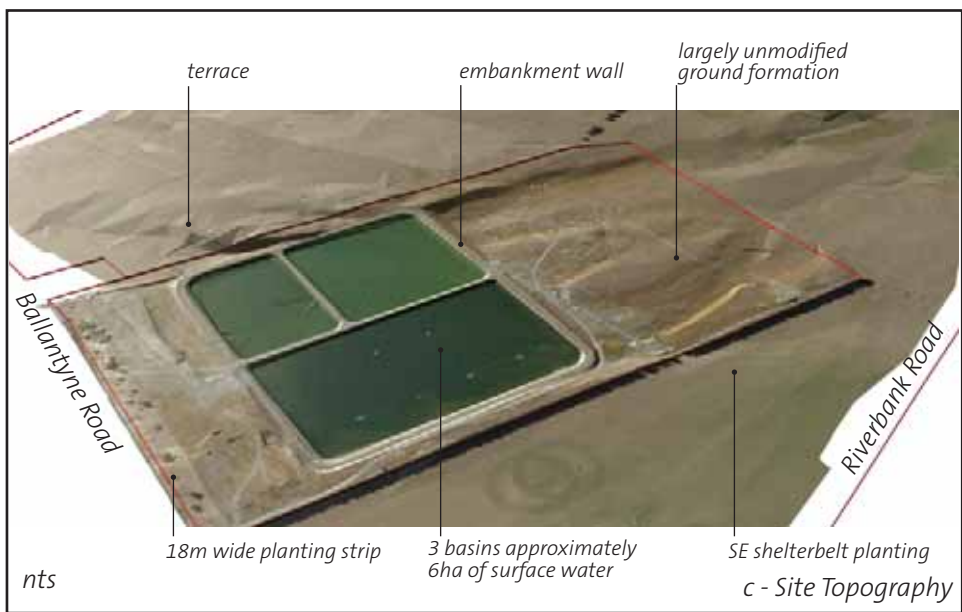
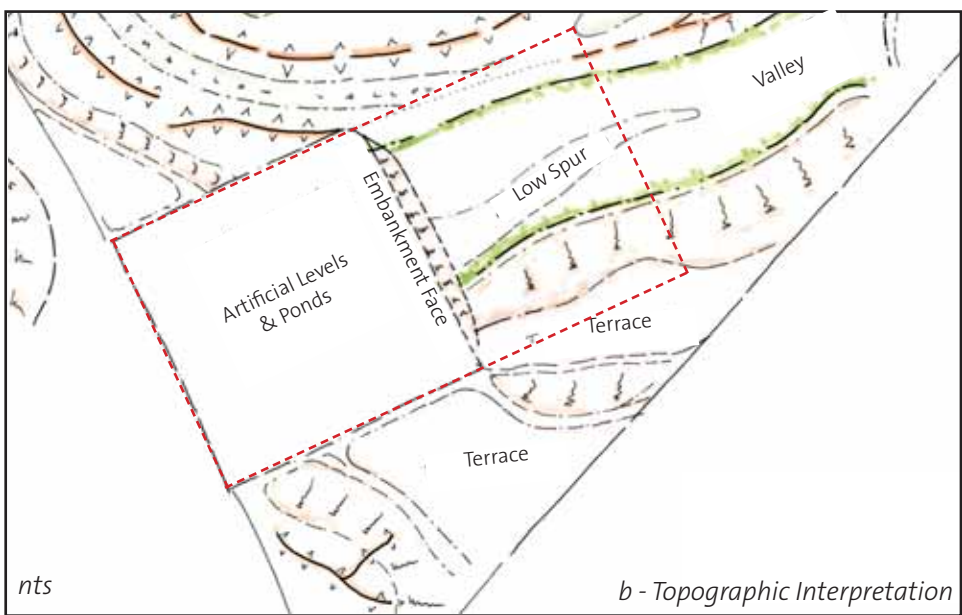
Looking south across the site at an oblique angle from Mt Iron, 548m.

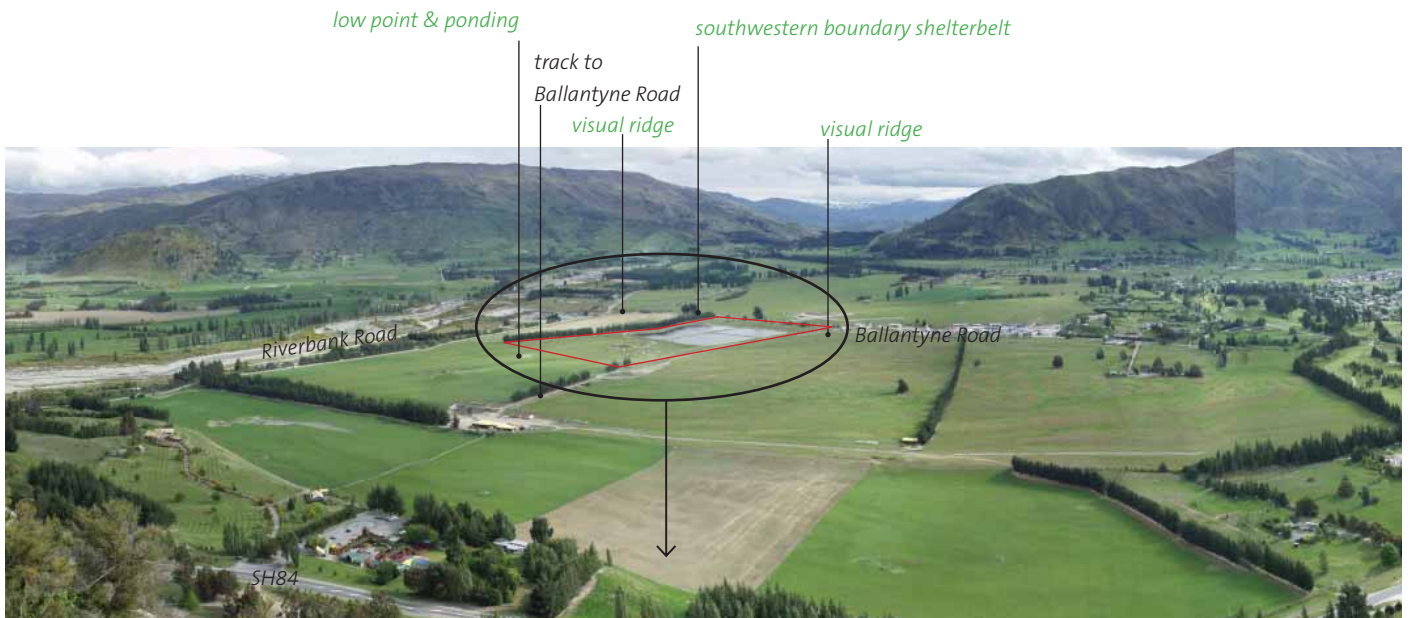


Looking north-west from Mt Barker, 596m, across the site in the valley.

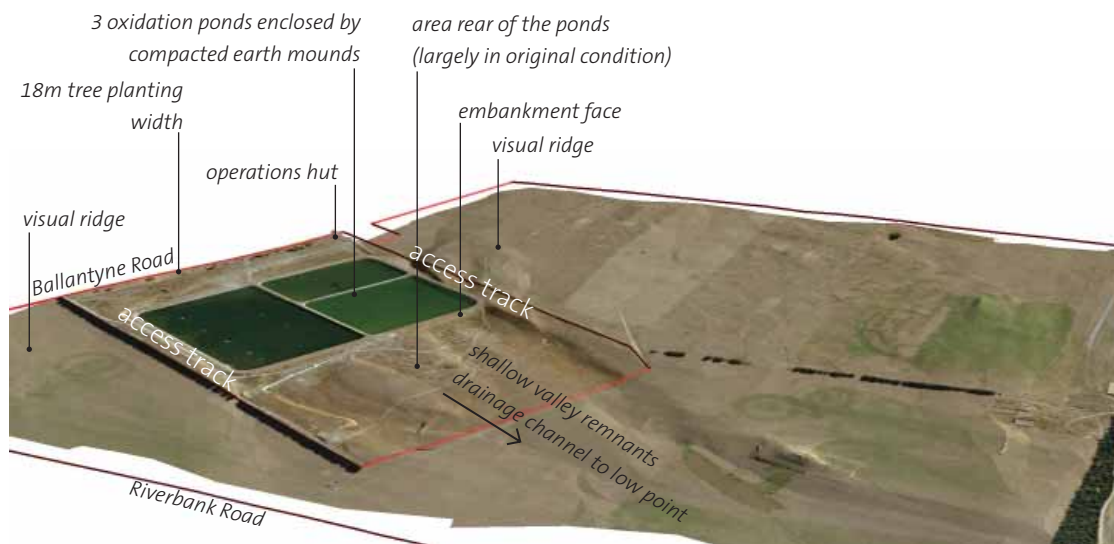


Photographic Viewpoints





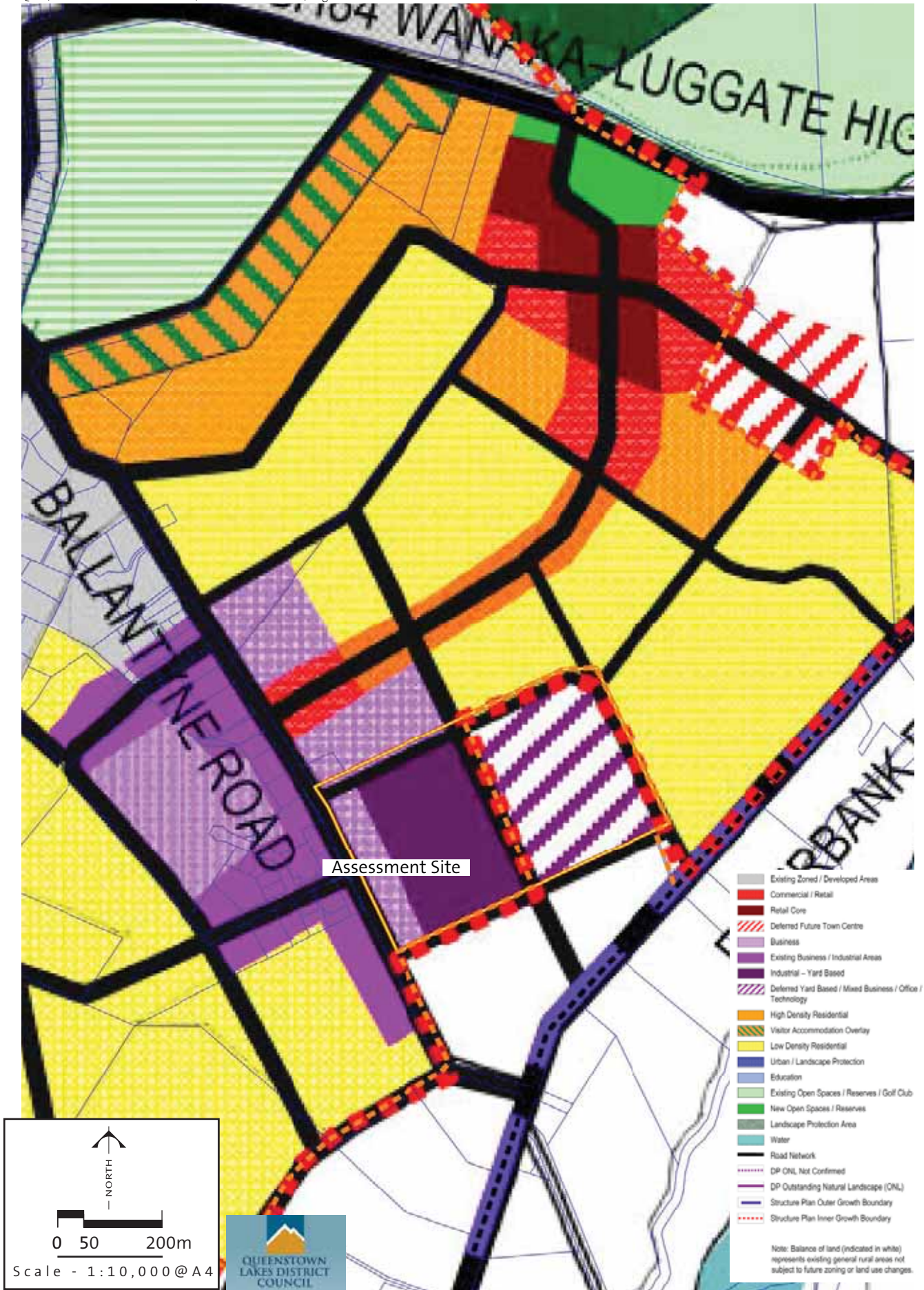
a - View from Mt Iron identifying natural (green) and manmade elements (black)



b - Computer model of pond formation set into the natural landform (manmade elements black)



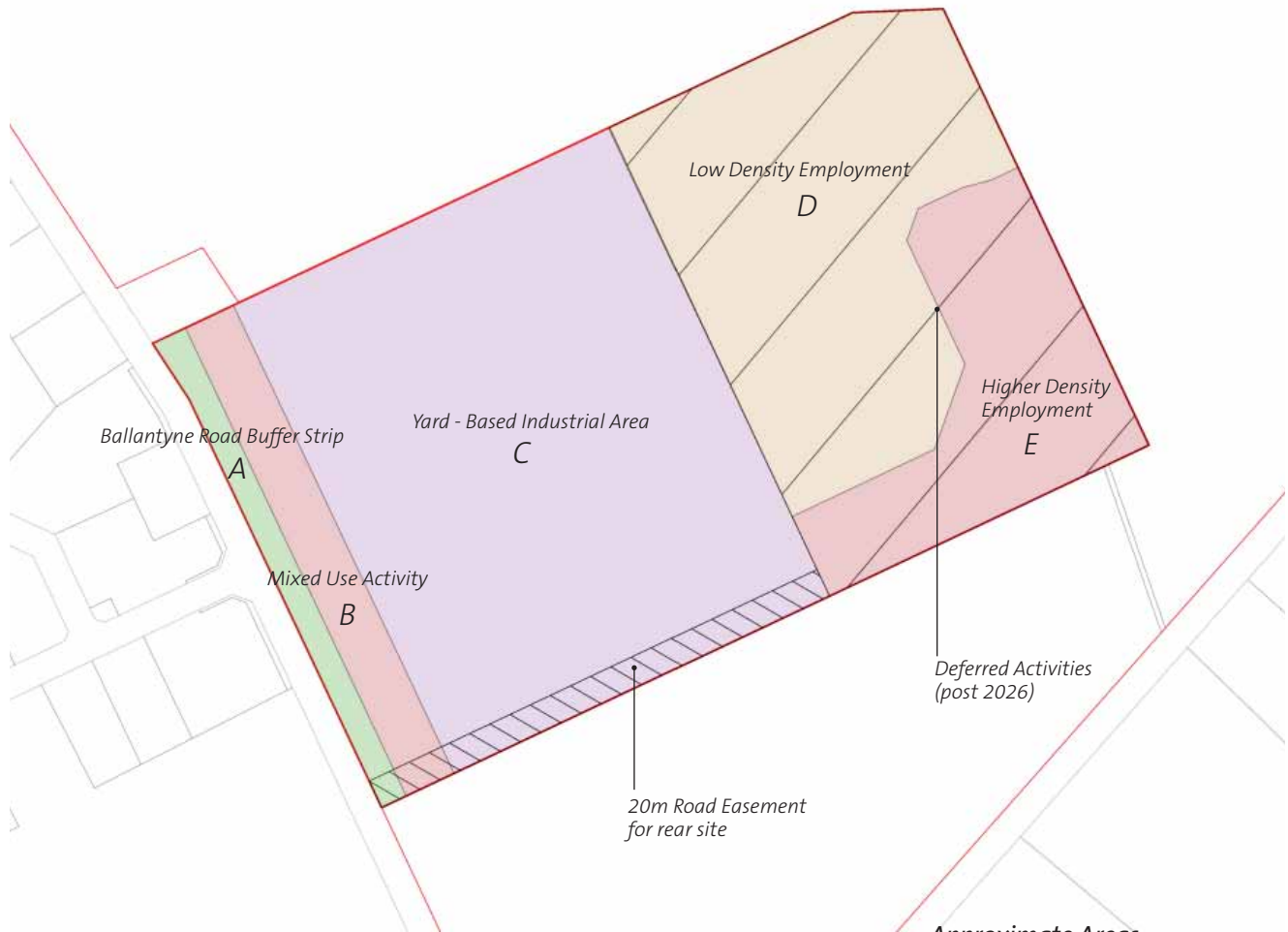
c - Summary of Valuable Site Resources



OXIDATION PONDS SITE, WANAKA
Section 32 Landscape Evaluation

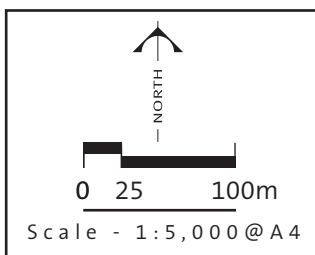
Figure 14
Revised Wanaka Structure Plan (Aug 2007)
across the Assessment Site

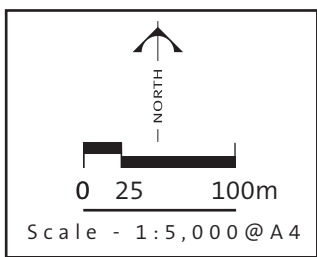
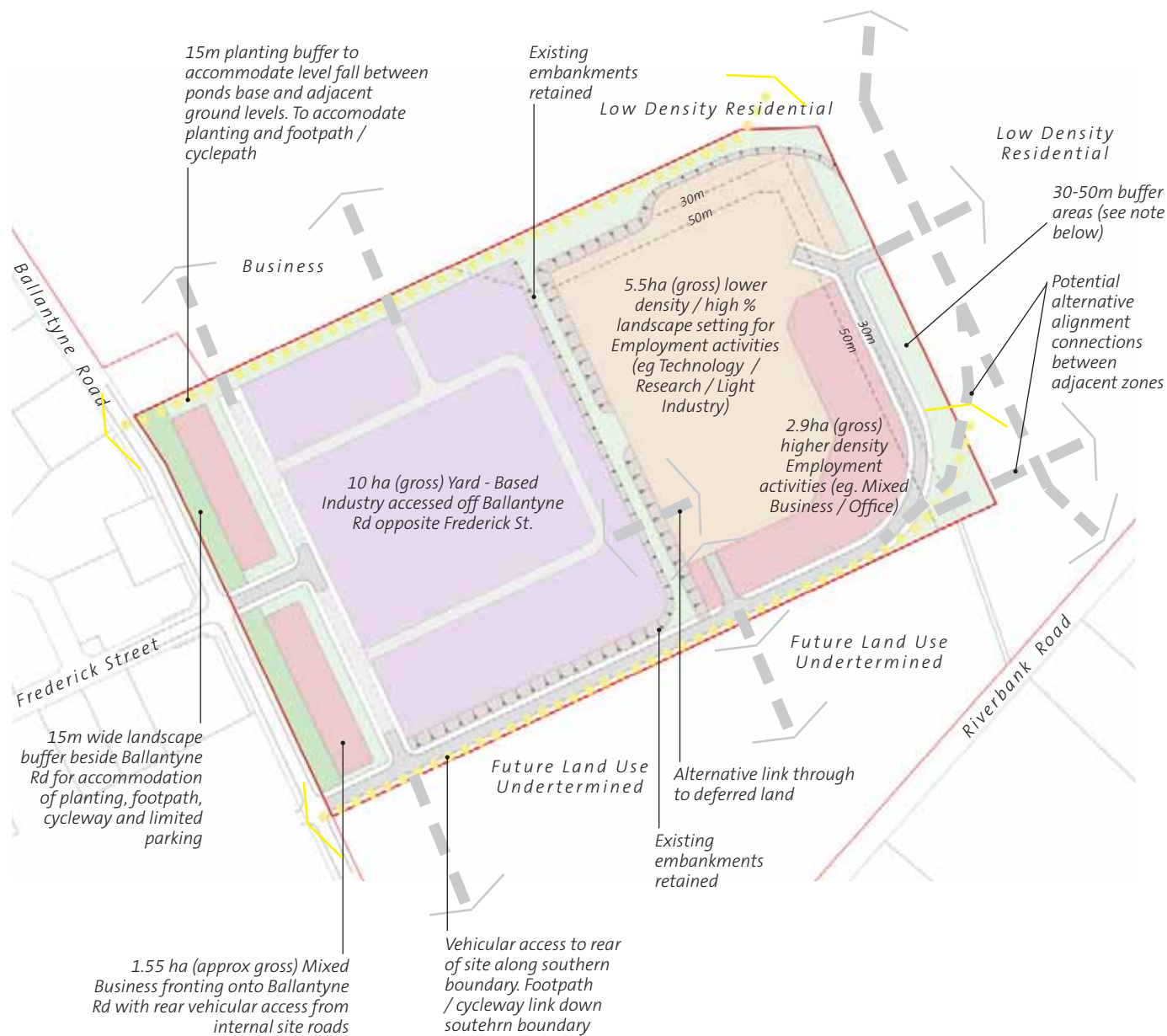
C06030_sec32_report_R01_20070905.indd



Approximate Areas

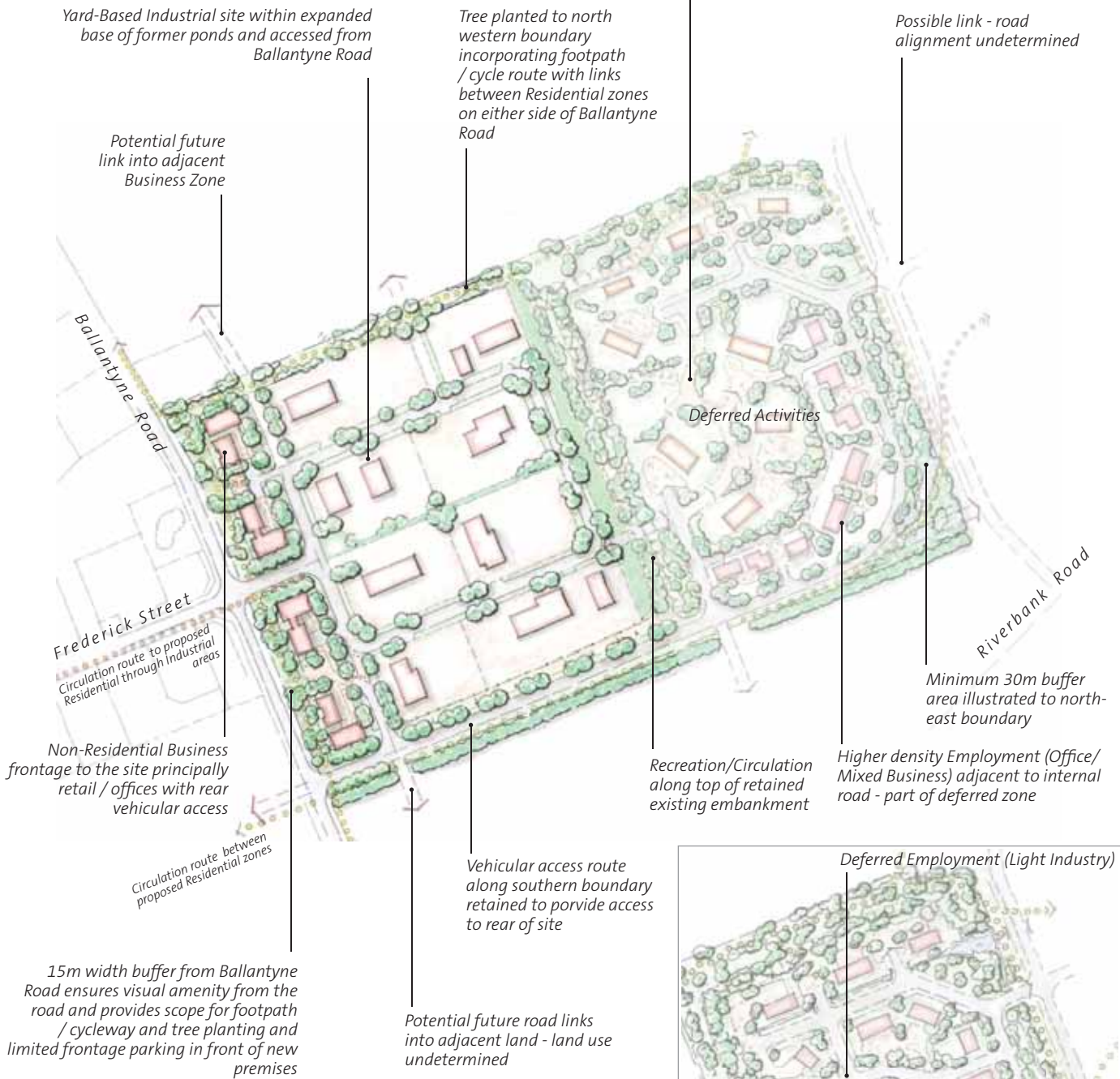
<i>Ballantyne Rd Buffer</i>	<i>0.53ha</i>
<i>Mixed Use</i>	<i>1.55ha</i>
<i>Yard - Based Industry</i>	<i>10ha</i>
<i>LD Employment (Technology / Research)</i>	<i>5.5ha</i>
<i>HD Employment (Mixed Business / Office)</i>	<i>2.9ha</i>
<i>Total (approximate)</i>	<i>20.4 ha</i>





NOTE:
 Adjacent land uses are not confirmed. It is assumed these would be Mixed Use / Light Industrial to the south of the site. Should the activity within the Deferred Zone generate industrial noise, the illustrated buffer arrangements may require widening, depending upon uses and proximity relationships. Buffer area to rear of site is likely to be between 30 and 50m depending on land uses within the Low Density Employment area.

Lower density / high % open landscape setting for Deferred Employment (Technology/Research)



Inset: Illustration demonstrating light industry option

