

Proposed Productive Planting Provisions

Gibbston Valley Station (Submitter #827)

Supplementary Planning Evidence of Brett Giddens (1 September 2017)

Chapter 13: Gibbston Character Zone

Insert new standards 23.5.14 and 23.5.15 in Table 2 (underlined)

23.1 Rules - Standards

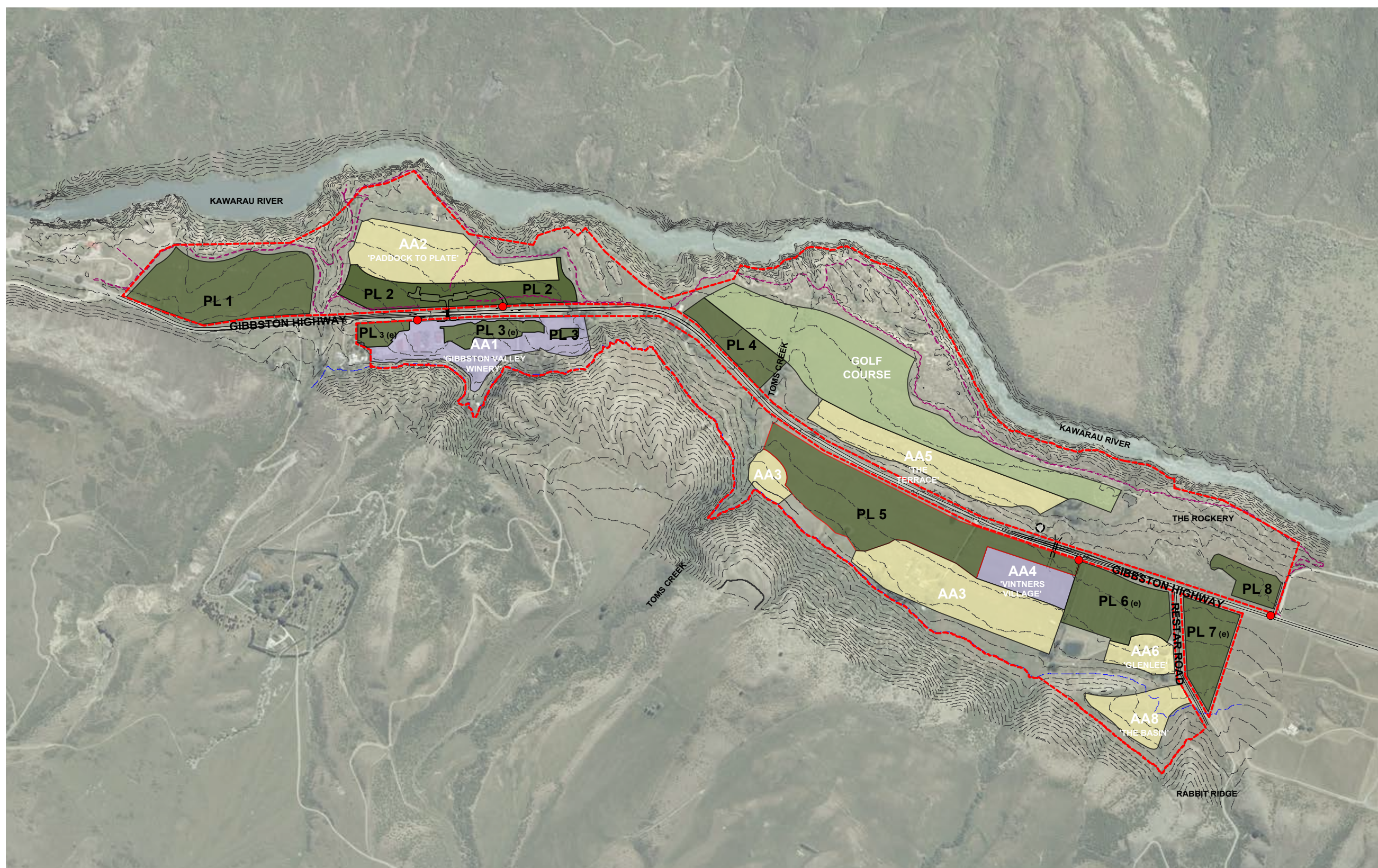
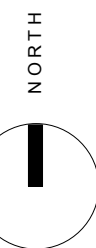
	Table 2: Standards for buildings	Non-compliance
<u>23.5.14</u>	<p><u>Productive Plantings – Viticulture and Horticulture – in Productive Landscape Areas PL3, PL6 and PL7 of Gibbston Valley Sub Zone</u></p> <p><u>Should the existing plantings in Productive Landscape Areas PL3, PL6 and PL7 of the Structure Plan become diseased or die, they shall be replaced with horticultural and/or viticultural plantings within the following planting season.</u></p> <p><u>A breach of this standard is a Restricted Discretionary Activity with the matters of discretion limited to:</u></p> <ul style="list-style-type: none"> <u>Whether additional time is required to achieve the feasible replacement of plantings</u> <u>The built form proposed in the respective activity area (refer to 23.5.15) and the extent of mitigation required from the Productive Landscape areas to reduce views from SH6</u> <u>Consistency between the coverage of proposed plantings compared to the coverage of those being replaced</u> <u>Methods and infrastructure to ensure longevity of new plantings</u> 	RD
<u>23.5.15</u>	<p><u>Productive Plantings – Viticulture and Horticulture – in Productive Landscape Areas PL1, PL2, PL4, PL5 and PL8 of Gibbston Valley Sub Zone</u></p> <p><u>Horticultural and/or viticultural plantings shall be put in place prior to the establishment of buildings in the respective Activity Areas of the Structure Plan, as set out as follows:</u></p> <ul style="list-style-type: none"> <u>AA2: PL1 and PL2</u> <u>AA3: PL5</u> 	RD

- AA4: PL5
- AA5: PL4 and PL8

In regard to this rule, “put in place” means that the plantings shall be in the ground with adequate infrastructure established to help maintain the plantings.

A breach of this standard is a Restricted Discretionary Activity with the matters of discretion limited to:

- Consistency between the Productive Landscape areas and the Structure Plan
- The built form proposed in the respective activity area and the extent of mitigation required from the Productive Landscape areas to reduce views from SH6
- Methods and infrastructure to ensure longevity of new plantings



LEGEND

- - - Subzone Boundary
- - - 380m Contour Line
- - - Public access walkways
- Heritage Feature
- Access points from SH6
- PL (e)** Existing Productive Landscape Planting
- PL** Productive Landscape Planting
- AA** Activity Area