

# Smarter journeys, together.

## COMMUNITY ENGAGEMENT SUMMARY



[www.qldc.govt.nz/wakatipu-way-to-go](http://www.qldc.govt.nz/wakatipu-way-to-go)

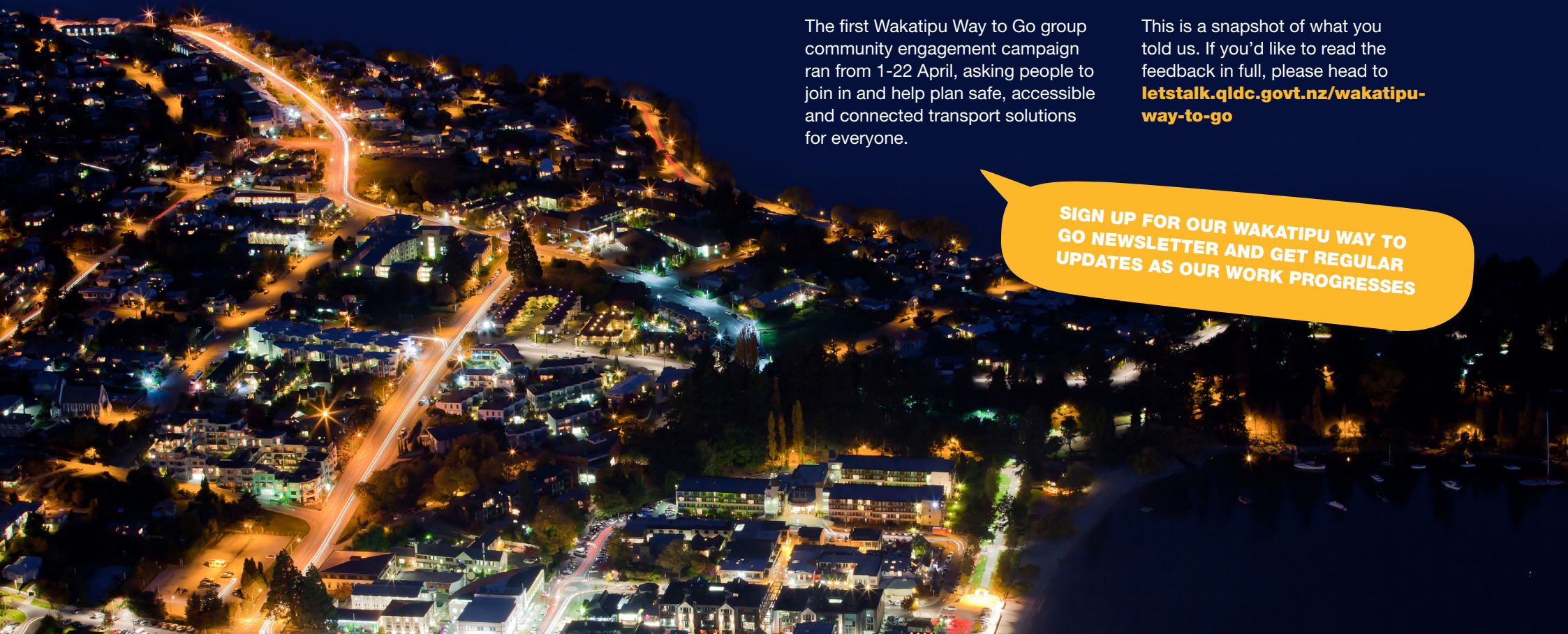


# Community engagement summary

The first Wakatipu Way to Go group community engagement campaign ran from 1-22 April, asking people to join in and help plan safe, accessible and connected transport solutions for everyone.

This is a snapshot of what you told us. If you'd like to read the feedback in full, please head to [letstalk.qldc.govt.nz/wakatipu-way-to-go](https://letstalk.qldc.govt.nz/wakatipu-way-to-go)

**SIGN UP FOR OUR WAKATIPU WAY TO GO NEWSLETTER AND GET REGULAR UPDATES AS OUR WORK PROGRESSES**



# Thanks for joining us

Thank you to everyone who took the time to take part in the transport planning process.

Through the Wakatipu Way to Go group, the Queenstown Lakes District Council, New Zealand Transport Agency and Otago Regional Council are committed to working together to provide an enduring, safe, affordable transport system which also provides you with transport choice.

We are grateful to everyone who took part in our recent survey, chatted to the team at our many events and shared insights on what would improve the travel experience.

We'll keep talking to you as our projects progress. In the meantime, we encourage you to read through the feedback and stick with us – we're working hard together to drive the change and get smart about how we move around Wakatipu.



**JIM BOULT**  
Mayor  
*Queenstown Lakes District*



**JIM HARLAND**  
Director Regional Relationships  
*New Zealand Transport Agency*

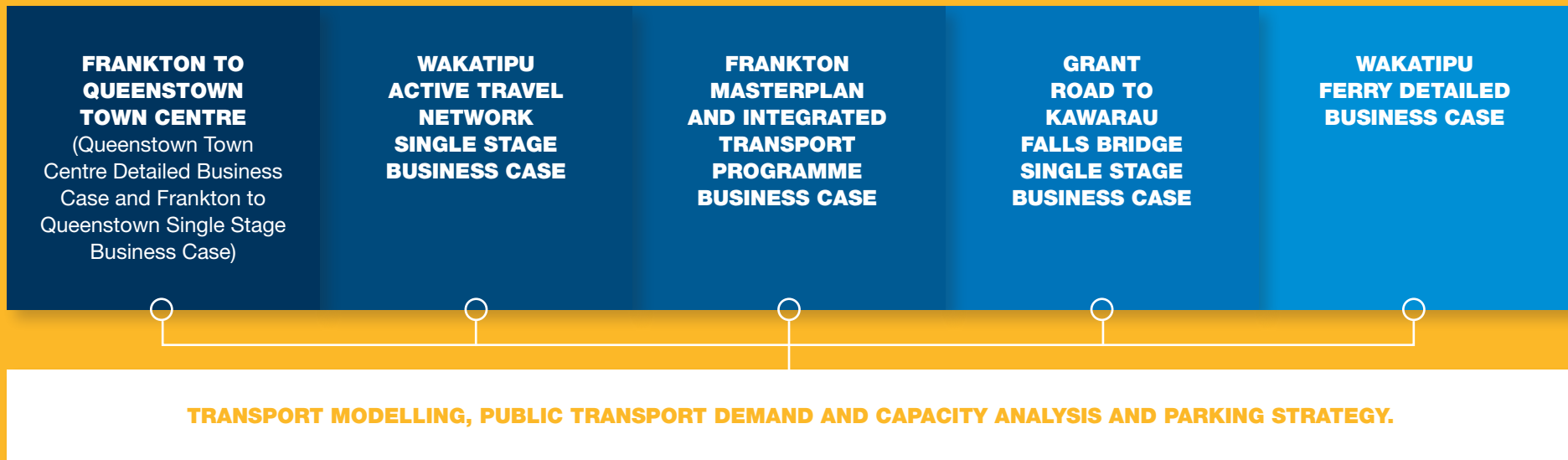


**STEPHEN WOODHEAD**  
Chairman  
*Otago Regional Council*

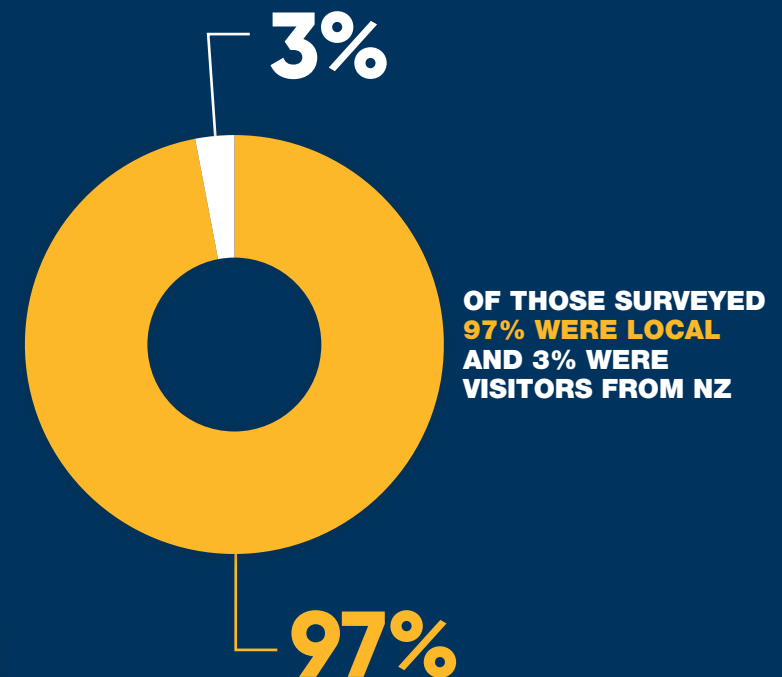
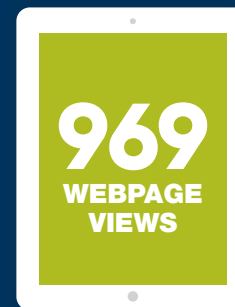
# What did we talk about?

The Wakatipu Way to Go group brings all of the transport investigations together to ensure that future solutions are being managed in an integrated way.

Over the three week engagement period we presented information about the key projects that over time will improve the Wakatipu transport experience.



# Over the 3 week period we had:



SPOKE TO OVER 700  
PEOPLE AT PRESENTATIONS,  
ENGAGEMENT STALLS, PHONE  
AND FACE TO FACE INTERACTIONS

100% 90% 80% 70% 60% 50% 40% 30% 20% 10%

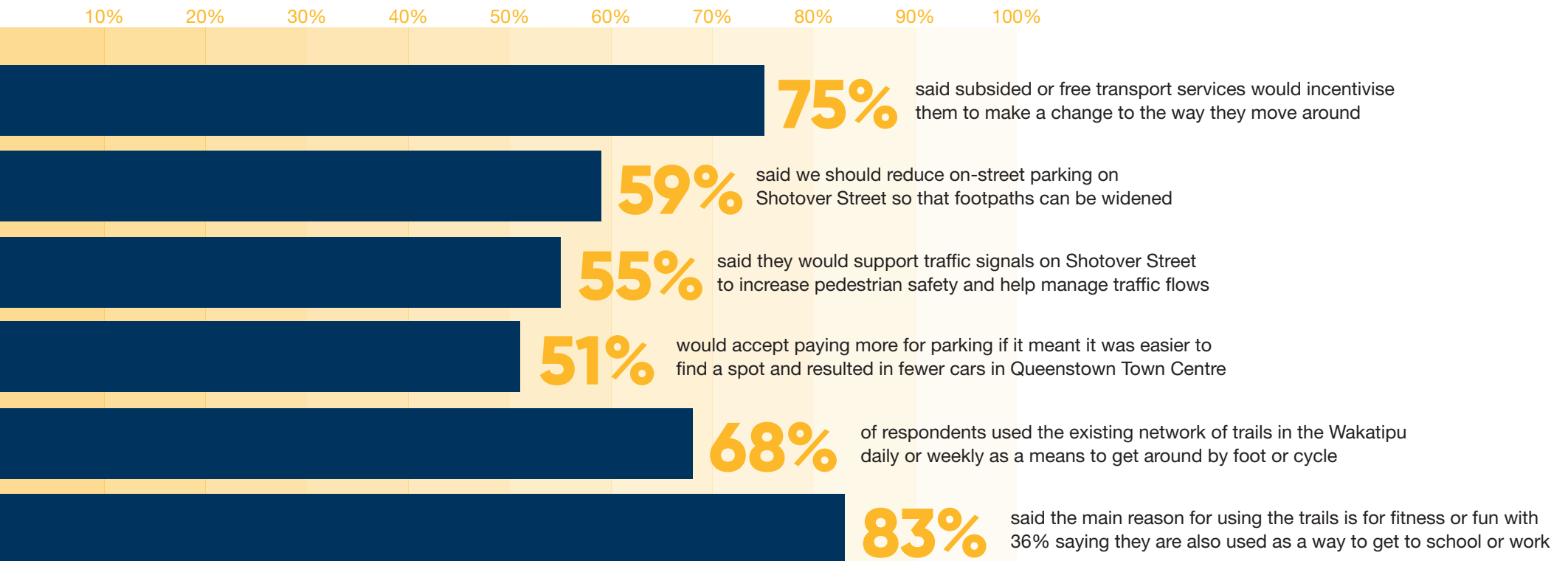
71% OF RESPONDENTS USUALLY TRAVEL AROUND THE WAKATIPU DAY TO DAY IN A PERSONAL CAR EITHER ON THEIR OWN OR WITH OTHER PEOPLE

# Results highlights

TAKE A LOOK AT ALL THE  
FEEDBACK IN MORE DETAIL AT  
[LETSTALK.QLDC.GOV.T.NZ](https://letstalk.qldc.govt.nz)

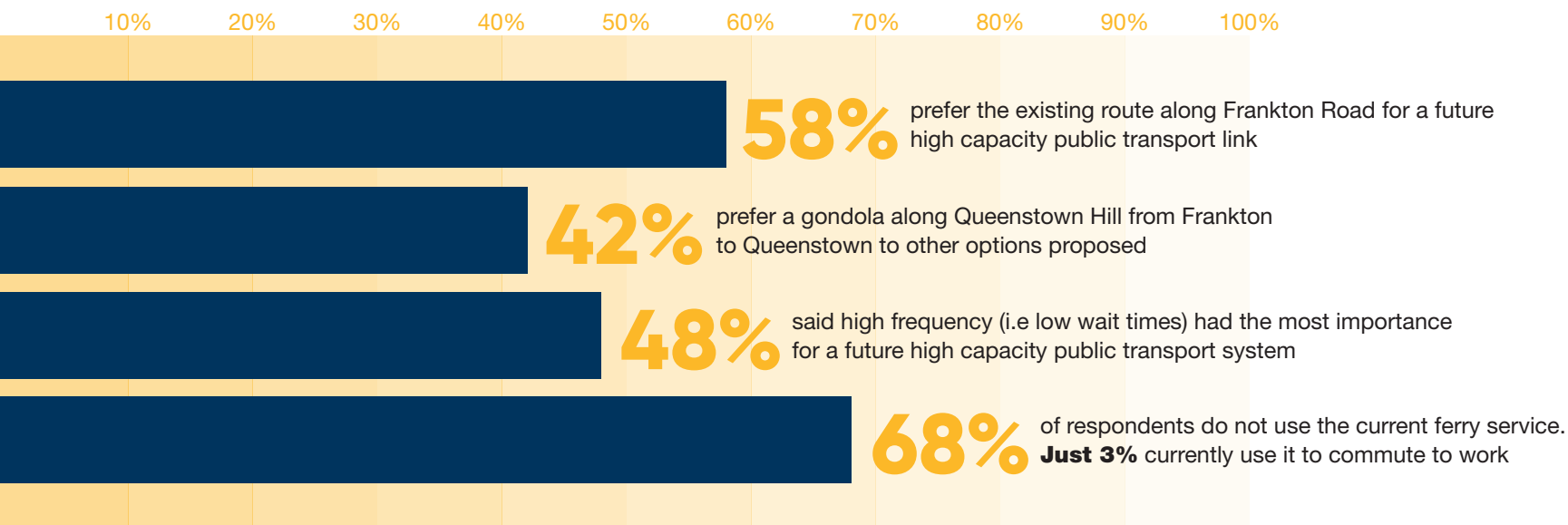
We asked a number of questions about how you currently move around Wakatipu, travel incentives, public transport, parking and future priorities for Frankton. We received some really interesting feedback – check out some of the highlights here:

## Making Travel Choices





## Getting around by Public Transport



**THE TOP 3** things that would encourage the respondents to use the ferry service more were:

- 1** Lower ticket fares
- 2** A ferry stop that is more convenient
- 3** A travel card allowing travel on any form of public transport

## Priorities for Frankton

**THE TOP 3** things that people think are immediately needed to make Frankton a great place to live:

- 1** Develop high quality pedestrian and cycle routes linking key destinations
- 2** Enhance the parks and reserves
- 3** High frequency localised public transport connections

# A snapshot of survey comments

On walking and cycling options, you said:

"The Frankton Road to central Queenstown should be sealed and laned for bike and scooter use. The path along Ladies Mile and into Lake Hayes Estate should also have asphalt."

"No asphalt. Too many issues with ice in winter. Speed of bikes on sealed cycle paths with runners, walkers, dogs etc is too dangerous. This is from the opinion of a road cyclist who would love more cycle lanes. But not at the shortcut expense of our beautiful trails."

"Protected cycle lanes are great to save having to stop for walkers blocking the path. Bike storage at key points for workers is important- Remarkables Park Centre, Frankton Hub and QT Centre."

"[Cycling] can feel a bit scary with tourist drivers on the roads and busy locals zooming out of driveways. Perhaps some more protection from the traffic?"

"Solar lights along all trails would make it safer for later trips, especially in winter when you struggle for daylight hours."

"There needs to be a safer alternative to biking over the main Shotover river bridge. Going over the old bridge is much longer and a harder route with more hills."

"Desperately need bike cages/bike racks in town. I would love to bike to work but there is simply nowhere to rack my bike safely in town near my office, so I don't bike because of this."

"More water fountains."

"Formal rest areas in middle of routes."

"Bike storage at bus stops; wifi at bus stops."



## On public transport improvements you said:

"Invest in high quality bus station infrastructure to provide the best user experience."

"Express bus every 15 minutes from main housing developments are key at the rush hour times only then just regular service between and after these times."

"We urgently need bus prioritisation for access to Shotover bridge from Shotover country, a direct bus route from Lake Hayes Estate to town and more frequent buses at peak times."

"Access for people with all abilities. Current bus network and ferry network are mostly inaccessible for people with disabilities."

"Whatever options you develop, please ensure prams and bicycles can be placed into/onto the public transport vehicles - free of charge."

"I use the ferry to commute 4 times a week... I would love to be able to take my bike on the ferry sometimes so that I could ride home."

"Have smaller more appropriate buses with more comprehensive routes round Wynyard, Sunshine Bay, over Edinburgh, Goldfields, Shotover Country."

"More frequent services. Later services. Direct route Arrowtown to Queenstown along Malaghans Road all day and evening, not just peak hours."

# Other ideas

Could we offer an incentive scheme to all the hotels/motels in town that if they run a shuttle service to from the airport/car rental pick up drop off, then we can encourage tourists to not rent a car when staying in Queenstown, they can use public transport and only rent the car for the tourist activities they do outside the central Queenstown area?

Bus stops at closer intervals. Some buses to stop at every stop and some to travel direct to town centre without frequent stops.

Yes, get a paint brush and create a Bus only lane in every conceivable piece of road applicable until more permanent solutions are implemented. If only one bus lane is possible technology is available to warn buses approaching one another. One of them only needs to merge with other traffic to allow them to pass safely.

Interest free loans for ebike purchases. E bike hire scheme for Queenstown using partner such as Uber.

Make whatever you choose environmentally friendly, not stinky old buses.

Easier and quick ways to pay for bus (i.e. tap and go, linked to bank card etc.).

Make existing options accessible with suitable bus stops for cold wind, and provide safety restraints.

A monthly card that covers all the public transport.

Promote car sharing. Promote buses. Promote bike-to-work-days. Promote ferries.

PLEASE consider— establishing a big Frankton transport Hub which gives many options for different people for their different directions and needs.

# Promoting awareness and engaging with the community



Engagement stall at Remarkables Farmers Market



Have your say board at Queenstown Event Centre



Public Transport Pop Up event



Wakatipu Way to Go and Shaping our Future presentation to community



# Smarter journeys, together.



[www.qldc.govt.nz/wakatipu-way-to-go](http://www.qldc.govt.nz/wakatipu-way-to-go)