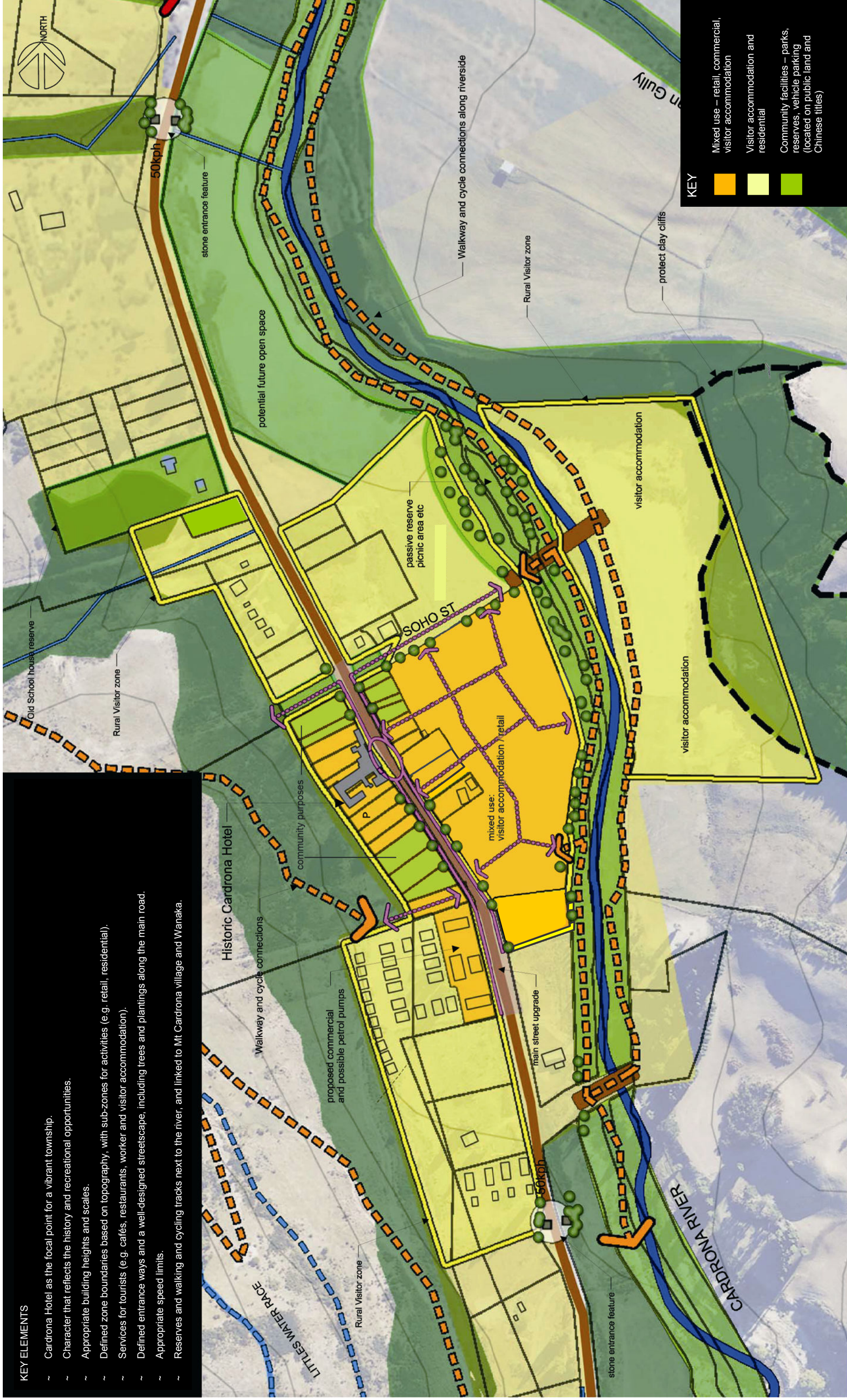


**KEY ELEMENTS**

- ~ Cardrona Hotel as the focal point for a vibrant township.
- ~ Character that reflects the history and recreational opportunities.
- ~ Appropriate building heights and scales.
- ~ Defined zone boundaries based on topography, with sub-zones for activities (e.g. retail, residential).
- ~ Services for tourists (e.g. cafés, restaurants, worker and visitor accommodation).
- ~ Defined entrance ways and a well-designed streetscape, including trees and plantings along the main road.
- ~ Appropriate speed limits.
- ~ Reserves and walking and cycling tracks next to the river, and linked to Mt Cardrona village and Wanaka.



**KEY**

	Mixed use – retail, commercial, visitor accommodation
	Visitor accommodation and residential
	Community facilities – parks, reserves, vehicle parking (located on public land and Chinese titles)



**CARDRONA**

**CARDRONA VILLAGE STRUCTURE PLAN  
VILLAGE CENTRE CONCEPT**

for: brooklynne properties ltd & queenstown lakes district council  
 July 2007  
 scale: 1:2500 (A1) 1:5000 (A3)