



DRAFT KAWARAU RIVERSIDE RESERVE MANAGEMENT PLAN – 2025

**Te Kirikiri Frankton, Queenstown
QLDC**

TABLE OF CONTENTS

1. Introduction	4
2. Reserves Description	4
3. Description of Primary Users and Activities	6
4. Vision	7
5. Objectives	7
6. Policies	8
7. Appendices	14

Other related documents:

Conservation Act 1987
Health and Safety Act 2015
Reserves Act 1973
Resource Management Act 1991

QLDC Alcohol Bylaw
QLDC Art in Public Places Policy
QLDC Operative and Proposed District Plans
QLDC Dog Bylaw
QLDC Events Strategy
QLDC Open Spaces Strategy
QLDC Plaques, Memorials & Monuments Policy
QLDC Disability Policy
QLDC Smoking Policy
QLDC Traffic and Parking Bylaw
QLDC Tree Policy
QLDC Film Permit - for drone use
QLDC Te Kirikiri/Frankton Masterplan 2020

Other relevant parameters for management and decision making:

QLDC Delegations Register – Community & Services Committee
QLDC Licenses, Leases & Permits

Other relevant parameters for management and decision making:

QLDC Delegations Register – Community and Services Committee (CSC)

Process for preparing a reserve management plan in accordance with the Reserves Act 1977:

2 November 2023 CSC approved creating plan
26 February 2024 Notice invited suggestions for the plan
25 March 2024 Suggestions closed
TBC xx xxx 2024 Notice invited submissions on the draft plan
TBC xx xxx 2024 Submissions close
TBC xx xxx 2024 Hearing held (*if required*)
TBC xx xxx 2024 Board recommends adopting plan
TBC xx xxx 2024 Full Council adopts plan

Review:

Generally, reserve management plans should be reviewed at a minimum of 10-year intervals by Parks Officers. This does not necessarily require a rewrite.

1. INTRODUCTION

Reserve Management Plan Purpose

The Reserves Act 1977 requires the Queenstown Lakes District Council (QLDC) to prepare Reserve Management Plans for all land classified as Recreation Reserve under council management or control.

This Reserve Management Plan (RMP) provides a vision for how the Kawarau Riverside Reserves are valued and experienced, currently, and long-term.

Objectives and policies outline the use, maintenance, protection, preservation, and development of the Kawarau Riverside Reserves. These assist with all decision making for the Reserves. Their purpose is to support the implementation of the community's vision for the Kawarau Riverside Reserves.

The Kawarau Riverside Reserves comprise seven adjoining parcels of QLDC administered recreation reserve land. However, there are several adjoining parcels of land that are either freehold QLDC land or LINZ land that form the open space corridor between the residential and Remarkables Park developments and the Kawarau River.

All parcels are currently used by the public and form part of the open space recreation experience. All QLDC land is maintained by QLDC as public open space. Including these parcels within this RMP ensures consistent management of the area. In this

document these parcels will be jointly referred to as the Kawarau Riverside Reserves, or the Reserves, see **Appendix One**.

A remaining section of private land is required by a Planning Tribunal Decision to be vested in QLDC through future subdivision processes. At such a time this is vested, it will be managed in accordance with this RMP see **Appendix 2**.

2. RESERVES DESCRIPTION

The Kawarau Riverside Reserves are for the enjoyment and benefit of the local community, residents and visitors, and to provide open space amenity, and community wellbeing.

They are bounded by the Kawarau River on one side and a mixture of lower-medium density residential and mixed use on the other. The remaining adjoining undeveloped private land is intended to be developed in future with commercial high density development, including a hotel.

The Reserves offer a natural buffer between land zoned in the district plan for urban development and the Kawarau River. They provide the opportunity to interact with the natural environment, access the Kawarau River and enjoy the expansive views of the Remarkables Mountain Range.

A natural green buffer exists between Lake Whakatipu and the Kawarau River, and the urban environment for large portions of the lake and river margins. The Reserves contribute significantly to

this wider blue and green network with the adjoining Frankton Domain to the north west and the Twin Rivers Trail to the north east currently held in road reserve.

A portion of the *Twin Rivers Trail* passes through the Reserves and form part of the Queenstown 'Great Ride' trail network,.

The Reserves are largely undeveloped with the exception of the well used Twin Rivers Trail. There are no formal carparks or public toilets and minimal reserve infrastructure. As such, the primary use is informal recreation and trail users.

The Reserves sit between the two high growth areas of Frankton and the Southern Corridor. The Frankton residential area would benefit from an enhanced reserve area that protects the natural character and connectivity it provides with the natural environment as the adjoining area continues to experience pressure from ongoing urban development. The Reserves provide potential for important Active Travel connections for the Southern Corridor community that should be considered in the ongoing management of the Reserves.

As the adjoining land undergoes continual development, this is an opportunity to protect the existing natural character of the Reserves and enhance them through native revegetation and amenity planting.

Legal Description

The Kawarau Riverside Reserves are situated on a combined area of 7.144 hectares. The Reserves are zoned Open Space & Recreation - Informal Recreation in the QLD Proposed District Plan (PDP) and located partly within Outstanding Natural Landscape (ONL), Outstanding Natural Feature (ONF) and Wāhi Tūpuna,

When the additional parcels, not currently classified as recreation reserve, are included the combined area is approximately 7.9 hectares **see Appendix 3**.

The Reserves are made up of three areas (identified in section 7) known as:

- Ivan Young Zoological Reserve
- Unnamed Reserve (Riverside Road Reserve)
- Kawarau Falls Reserve

Access:

Primary cycle and pedestrian access into the Reserves is via:

- Kawarau Place
- The Twin Rivers Trail

Vehicle access to the Reserves is via:

- Riverside Road
- Two points off Robertson Street

Some reserve parking exists on one of the Robertson St access points opposite Douglas St. - However, there are no formal entry nodes.

Mana Whenua

Placeholder – mana whenua to provide cultural narrative.

Ecology

The Reserves are typically open in nature on the upper terrace with mixed predominantly exotic vegetation being located along the banks of the Kawarau River.

There are small pockets of recently planted native species in the Kawarau Falls Reserve including Kowhai, Lancewoods, Beech, Ribbonwood and Rimu.

The Ivan Young Zoological Reserve has many mature exotic specimen trees. An avenue of mature Silver Birch, planted by the Young family, lines the entrance to the Reserve.

Several pest species are present across the Reserves including Crack Willow predominantly situated on the Kawarau riverbank. There are large areas of blackberry and gorse present with a smaller area of wilding conifers.

History

Ivan Young Zoological Reserve:

The area known as the *Ivan Young Zoological Reserve* was historically used as an unofficial rubbish dumping site. It subsequently became reserve land that Ivan Young, who resided in the adjoining property with his family, restored and enhanced.

The Young family began restoring the reserve in 1965. This consisted of extensive planting of mixed native and exotic species and included providing a safe space for rescued animals.

Ivan Young worked as the Curator for the Parks and Reserves Department at Council, all the while, dedicating his personal time to the restoration of the reserve and the establishment of the zoological gardens.

The reserve was reclassified in 1981 from a Local Purpose Reserve to a Recreation Reserve, reflecting the restoration efforts of Ivan Young and his family.

In 1983 Ivan and his wife Daphne Young obtained a 33-year lease for the reserve area, to operate a parkland for zoological purposes.

Ivan Young passed away in 2013 at the age of 89. In 2014, the reserve was officially renamed the *Ivan Young Zoological Reserve* at an opening ceremony that included the unveiling of a memorial sign highlighting the extensive work and dedication of

Ivan Young and to acknowledge his invaluable contribution to the community.

The high amenity values experienced by visitors to the Ivan Young Zoological Reserve today are in thanks to the vision and dedication of Ivan Young and the continual stewardship of the wider Young family.

Infrastructure

The Riverside Reserves contain minimal reserve infrastructure comprising

- Bench seats
- Dog waste bin
- Fences and gates
- Signage
- There is a wastewater pump station located on the southern corner above the Ivan Young Zoological Reserve.

3. DESCRIPTION OF PRIMARY USERS AND ACTIVITIES

The proximity of the Reserves to the surrounding residential area of Frankton and the connection they provide through to the Kawarau River makes it an important recreation reserve for the Frankton Community.

The Reserves are frequently used by residents and visitors for informal recreation, including walking, running, dog walking, cycling and enjoying views of the surrounding Remarkables Mountain Range.

The *Twin Rivers Trail* that dissects the Reserves provides an important Active Travel Route for commuters accessing Frankton and Queenstown Central. This trail is also highly used by residents and visitors for active recreation, and it forms part of the New Zealand Great Rides.

Leases

The Kidsfirst Kindergarten Frankton has a thirty three year lease that expires in 2049 over part of the Reserve adjoining their premises for access and car parking.

Events

Events such as the Queenstown Marathon utilise the Reserves and the Twin Rivers Trail.

4. VISION

The following vision is the community's overarching long-term outlook for the Kawarau Riverside Reserves:

The Kawarau Riverside Reserves' informal and natural qualities are protected and enjoyed by everyone who visits. A space to encourage physical activity, enhance the Frankton community's connection with the Kawarau River, and encourage the protection and improvement of the Reserves' biodiversity.

5. OBJECTIVES

The following objectives provide a framework to manage the Reserves and support the vision. They are overarching goals to support the Reserves' Purpose and Vision.

Objectives

- 5.1 To support and encourage the Frankton community's connection with and to, the Reserves and the Kawarau River.
- 5.2 To accommodate appropriate activities for all ages and abilities that enhance the community's access to, use, and enjoyment of the Reserves.
- 5.3 To maintain and develop the Reserves in a planned manner as appropriate to achieve quality open space that provides opportunities for enjoyment and a range of uses by residents and visitors.
- 5.4 To protect and enhance the ecological values within the Reserves, through removal of pest species, enhancement of indigenous ecology and succession.
- 5.5 To allow for recreation infrastructure to enhance public use of the Reserves and that positively contributes to the amenity of the area and provides public benefit.
- 5.6 To facilitate mana whenua participation to ensure Kāi Tahu values are embedded in decision making in relation to the management of the Reserves.

6. POLICIES:

The following policies are the actions that support the implementation of the objectives. They guide how all the Reserves will be managed in order to achieve the goals. They are clear, informed, inclusive and achievable.

Policies 6.1

6.1.1 Community

- a) Encourage the community's active participation in planning, maintaining, and enhancing the Reserves.
- b) Encourage community engagement and involvement in planting and caring for the Reserves' vegetation and biodiversity.
- c) Support Kāi Tahu cultural representation, interpretation and expression, such as sculptures and art, where it is relevant to the Reserve and where it sits within its landscape context.
- d) Support community initiatives and activities which uphold the objectives of the Plan.
- e) Support community initiatives and activities that provide ecological and/or educational benefits, such as native planting and wetland restoration.
- f) Consider plantings of productive (food) trees and plants i.e an orchard that benefit the community where the overall natural and informal character of the Reserves is retained.
- g) Support the vesting and classification of the additional land parcels, identified in

Appendix 2, and the management of them in accordance with this RMP.

6.1.2 Recreation

- a) Consider new recreation opportunities where they do not conflict with existing uses and are consistent with the character of the Reserves.
- b) Consider all ages and abilities and safety when new trails and facilities are provided and when existing trails and facilities are upgraded.
- c) Assess new trails based on community benefit, interaction with other reserve uses and long term maintenance.
- d) Enhance public connection to the river.
- e) Support the enhancement of the informal natural characteristics of the Reserve.

6.1.3 Infrastructure

Infrastructure refers to development such as buildings, car parks, fences, structures to support active travel, signage and services.

- a) Consider the development of built structures, as necessary, to provide for the function and support of passive recreation activities on the Reserves for the benefit of the community.

- b) Encourage a collaborative and non-exclusive use of built structures, to limit the built footprint on the Reserves.
- c) Consider the construction of public toilets and shelters on the Reserve, to meet the needs of reserve users.
- d) Enhance connectivity to the existing active transport network to reduce the need for car parking on the Reserves.
- e) Consider structures associated with improving the active travel network and support the co-location of services with this infrastructure to mitigate the effects of built form on the Reserves.
- f) Allow pest control fencing to control and manage rabbits as required.
- g) Support the placement of park furniture i.e., water fountains, picnic tables, seating and BBQs in appropriate locations where they enhance the Reserves for the community.
- h) Improve and rationalise signage and wayfinding, particularly at access points.
- i) Prohibit the use of the Reserves for processing/attenuating offsite stormwater, including any diverted overland flow paths originating from outside the Reserve boundary.

6.1.4 Access

- a) Enhance connectivity to the surrounding urban area and encourage new connections where opportunities arise that benefit the community and reserve users.

6.1.5 Ecology

- a) Enable the ecological values of the Reserves to be enhanced through native revegetation and habitat restoration.
- b) Monitor and control pest species, such as noxious weeds, wilding trees and rabbits, where practicable.
- c) Retain and maintain mature trees both exotic and native, in accordance with the QLDC Tree Policy.

6.1.6 Community Events

- a) Permit the use of the Reserves for community events that are of an appropriate scale.
- b) Ensure that community events do not compromise the primary functions of the Reserves.

6.1.7 Commercial Use, Leases and Licences

- a) Consider commercial recreation opportunities, permits and licenses for

ancillary services where they do not conflict with existing uses and are consistent with the character of the Reserves.

- b) Only consider commercial activities where they support anticipated reserve uses and provide benefit to the Reserve.

6.1.8 Services

- a) Consider the placement and maintenance of utility services where the Reserves will not be materially altered or permanently damaged, and the rights of the public using the Reserves will not be permanently affected.
- b) Site underground utility services to avoid existing and anticipated features, including trees and waterways.

6.1.9 Encroachment

- a) Ensure adjacent properties do not encroach into the Reserves, including by extending landscaping, lawn areas and structures within the Reserves' boundaries, or using the Reserves for the storage of property.
- b) Ensure the Reserves are not used for the permanent storage of private kayaks and watercraft.

- c) Manage the Reserves to ensure they are not used for the dumping of waste, including green waste.

6.1.10 Smoke and Vape Free

Ensure the Reserves are smoke and vape free to promote the health of all users.

DRAFT

Reserve Specific Policies 6.2

6.2.1 Kwarau Falls Reserve

Kwarau Falls Reserve is a linear reserve bordering the Kwarau River, which contains mature bush, a track and has steep banks down to the river. There is an avenue of silver birch and other exotic and native park trees. The historic Brunswick Flour Mill at Kwarau Falls was located very close to this reserve.

The large, undulating open area of the Reserve has seen the emergence of unauthorised bike jumps. This can have an adverse effect on the Reserve, including the loss of valuable open space, damage to natural features, and potential health and safety risks for both users and other visitors.

- a) Support the enhancement of the esplanade reserve adjacent to Ōterotu (Kwarau Falls) to support Kāi Tahu values and build a stronger association with cultural heritage.
- b) Support successional native planting, particularly along the riparian margin to improve biodiversity and protect the water quality of the Kwarau River.
- c) Support the community (or key stakeholders) to develop a plan that formalises the jump area and explores other beginner bike opportunities such as a skills area or pump track.



6.2.2 Unnamed Reserve (Riverside Road Reserve)

The Riverside Road Reserves form a linear reserve area creating an open space corridor between the Kawarau River and the Ivan Young Zoological Reserve to the southwest and private land to the north. It provides an important buffer between the increasingly urbanising environment and the natural water network.

- a) Support the creation of an arrival node that enhances the passive and active recreation purpose of the Reserves and maintains the natural character.
- b) Support the naming of the Reserve to foster community connection to the Reserves.
- c) Consider the development of car parking at the end of Riverside Road to the extent that it does not limit the capacity of the Reserve to provide quality recreation open space. This means there must be consideration to limit hard surfaces and maintain open space and ecological benefits of the Reserves.
- d) Allow for the existing pump station to be relocated and upgraded and require the existing pump station to be decommissioned.

- e) Require the vesting of the remaining private land, identified in **Appendix 2**, to the north of Riverside Road, and for it to be managed in accordance with this RMP.



6.2.3 Ivan Young Zoological Reserve

The Ivan Young Zoological Reserve borders the Kawarau River and contains many mature exotic tree specimens. The Reserve was renamed the Ivan Young Zoological Reserve in 2014 in memory of Ivan Young who transformed the area into a zoological garden.

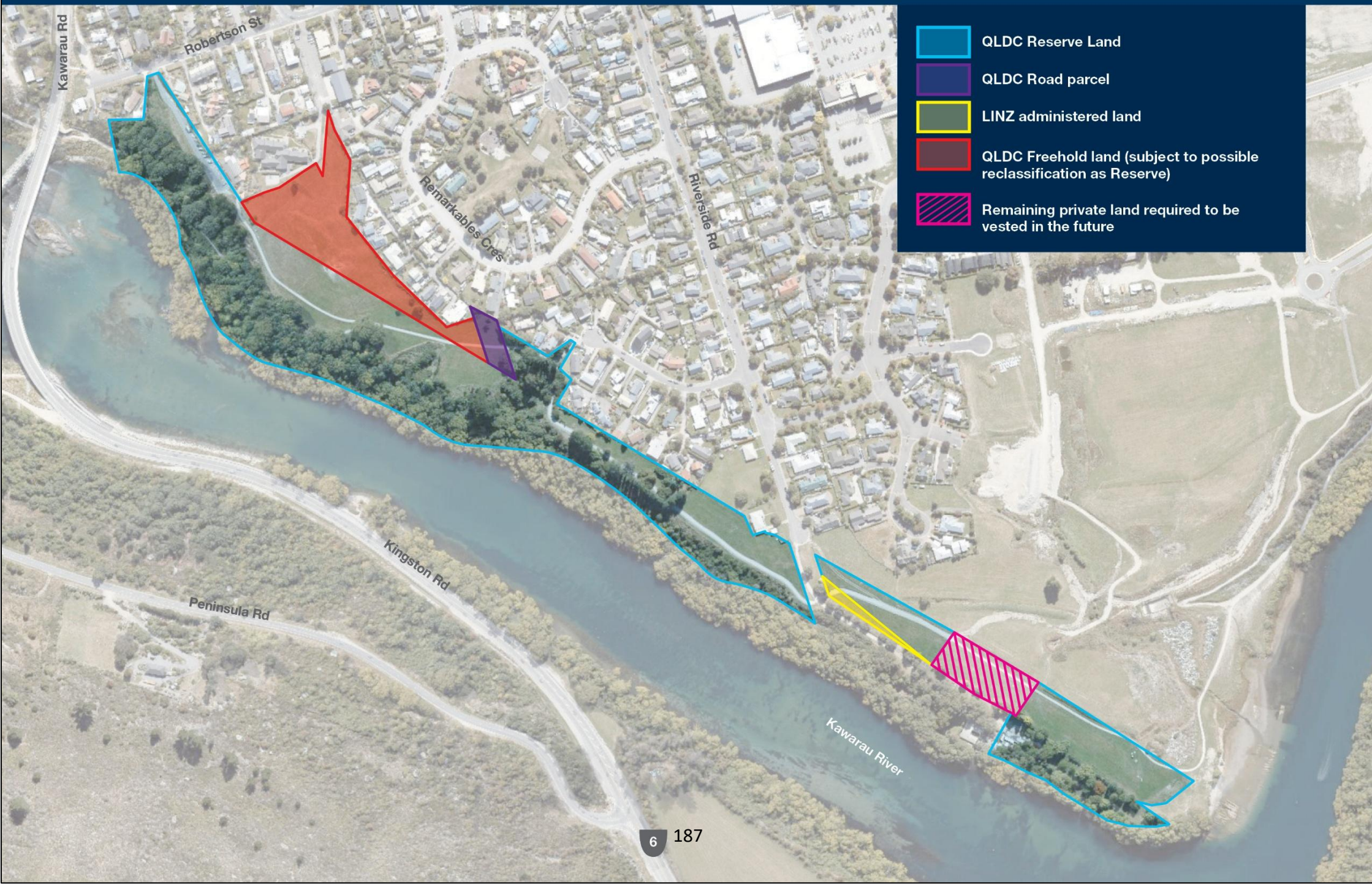
- a) Assess and remove unnecessary fences, gates and signage to encourage public access to the Reserve.
- b) Improve signage, wayfinding and paths to facilitate and enhance the public use and experience of the Reserve.
- c) Acknowledge and retain existing native and exotic mature planting established by Ivan Young, where it provides public benefit.





- 1 Robertson Street Access
- 2 Kawarau Place Access
- 3 Riverside Road Access
- 4 Ivan Young Zoological Reserve
- 5 Future Remarkables Park mixed development
- Twin Rivers Trail
- Kindergarten Lease Area

Appendix 2 Land Classification



Appendix 3 – Land Parcel Classification Table

Legal Description / Parcel ID	Land Classification	Area (m ²)	Location
Lot 603 DP 24569	QLDC Recreation Reserve	5,168	Riverside Road Reserve
Lot 604 DP 24571	QLDC Recreation Reserve	1,836	Riverside Road Reserve
Lot 605 DP 25645	QLDC Recreation Reserve	260	Riverside Road Reserve
Lot 706 DP 24399	QLDC Recreation Reserve	911	Riverside Road Reserve
Lot 701 DP 24131	QLDC Recreation Reserve	2,486	Riverside Road Reserve
Section 159 Block I Shotover SD	LINZ administered land	675	Riverside Road Reserve
Section 167 Block I Shotover SD	QLDC Recreation Reserve	4,500	Ivan Young Zoological Reserve
Section 29 Block XVIII Town of Frankton	QLDC Recreation Reserve	50,000	Kawarau Falls Reserve
Lot 19 DP 20484	QLDC Local Purpose Reserve (Recreation)	2,398	Kawarau Falls Reserve
Lot 2 DP 412692	QLDC Freehold	1,425	Kawarau Falls Reserve
Lot 2 DP 392200	QLDC Freehold	10,847	Kawarau Falls Reserve
3172983	Road	1,149	Kawarau Falls Reserve