

**From:** [Mark Williams | Queenstown Trails Trust](#)  
**To:** [Christine Edgley](#)  
**Cc:** [Jeff Brown](#)  
**Subject:** RE: The Hills  
**Date:** Friday, 7 February 2025 12:00:33 pm  
**Attachments:** [image003.png](#)  
[image003.png](#)

Hi Christine,

Better really, as its closer to the Centennial Ave connection onto the Arrow River Bridges Trail

Cheers  
Willy

**Mark Williams** | CEO | **Queenstown Trails**  
**M:** +64 (0) 27 5540941 | **E:** [mark.williams@queenstowntrails.org.nz](mailto:mark.williams@queenstowntrails.org.nz)  
[www.queenstowntrails.org.nz](http://www.queenstowntrails.org.nz)



**From:** Christine Edgley <[Christine@brownandcompany.co.nz](mailto:Christine@brownandcompany.co.nz)>  
**Sent:** Friday, 7 February 2025 11:44 am  
**To:** Mark Williams | Queenstown Trails Trust <[mark.williams@queenstowntrails.org.nz](mailto:mark.williams@queenstowntrails.org.nz)>  
**Cc:** Jeff Brown <[jeff@brownandcompany.co.nz](mailto:jeff@brownandcompany.co.nz)>  
**Subject:** RE: The Hills

Hi Willy,

Thanks very much for that feedback, which all makes sense – hopefully it makes it more tolerable that the straight green stretch you mentioned is actually relatively short, and flat.

With regards to the relocated exit onto McDonnell Road, in terms of the connection with the Arrow River Trail, did you have any thoughts about whether this relocated exit was better or worse than the previous location in terms of user experience when making that connection? Or is it a bit of a six-of-one / half-dozen situation?

Regards,



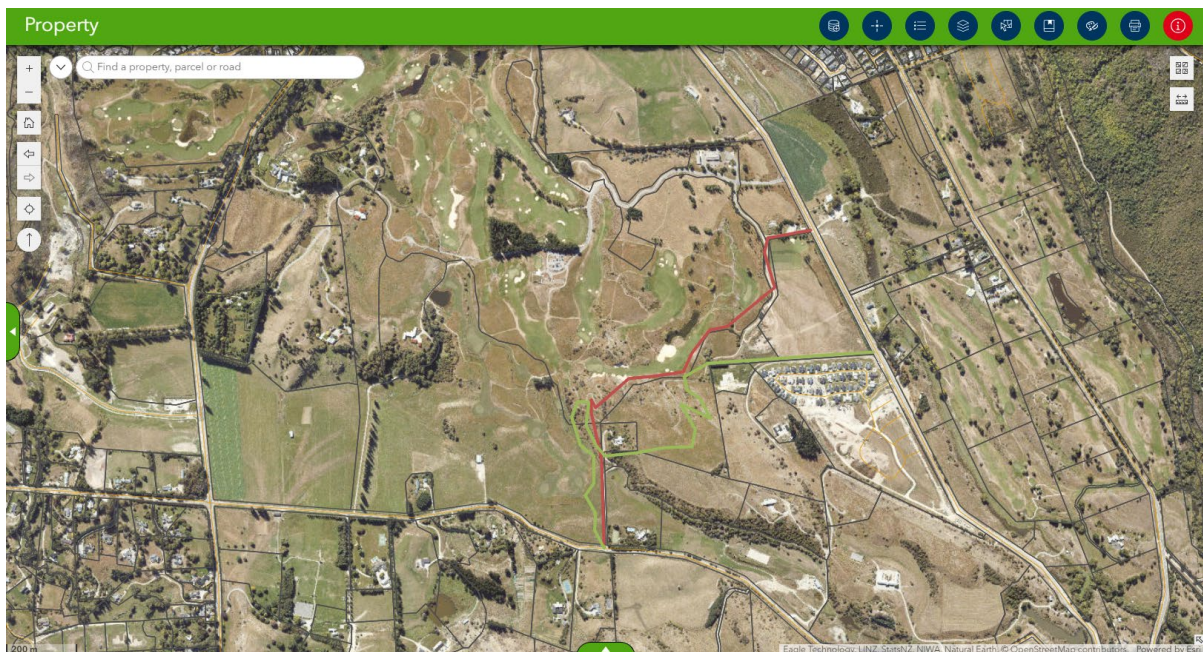
This message contains confidential information and is intended only for the recipient. If you are not the recipient you should not disseminate, distribute or copy this e-mail. Please notify the sender immediately by e-mail if you have received this e-mail by mistake and delete this e-mail from your system. E-mail transmission cannot be guaranteed to be secure or error-free as information could be intercepted, corrupted, lost, destroyed, arrive late or incomplete, or contain viruses. The sender therefore does not accept liability for any errors or omissions in the contents of this message, which arise as a result of e-mail transmission. If verification is required please request a hard-copy version.

**From:** Mark Williams | Queenstown Trails Trust <[mark.williams@queenstowntrails.org.nz](mailto:mark.williams@queenstowntrails.org.nz)>  
**Sent:** Thursday, 30 January 2025 3:21 pm  
**To:** Christine Edgley <[Christine@brownandcompany.co.nz](mailto:Christine@brownandcompany.co.nz)>  
**Cc:** Jeff Brown <[jeff@brownandcompany.co.nz](mailto:jeff@brownandcompany.co.nz)>  
**Subject:** RE: The Hills

Hi Christine,

My apologies, this slipped through the cracks. I think the new proposed line is a hybrid of the one I walked with Emma?

I've tried to re-create both alignments on the screenshot below – The original line (red) was potentially a bit in no-mans land, but closer to Brodie Ave – the new line (green) services the retirement village better, and links to the Arrow River Trail on the gravel links from Centennial Ave but there is nothing worse than a long straight section of trail (like the geen section from McDonnell Road) to numb the enjoyment factor – so following a contour/desire line would be beneficial.



Otherwise, the end point and connection to Hogans Gully is the same, and achieving a manageable gradient will be the most important aspect – which is what I think we managed to achieve?

Cheers  
Willy

**Mark Williams** | CEO | **Queenstown Trails**  
**M:** +64 (0) 27 5540941 | **E:** [mark.williams@queenstowntrails.org.nz](mailto:mark.williams@queenstowntrails.org.nz)  
[www.queenstowntrails.org.nz](http://www.queenstowntrails.org.nz)



**From:** Christine Edgley <[Christine@brownandcompany.co.nz](mailto:Christine@brownandcompany.co.nz)>  
**Sent:** Thursday, 30 January 2025 12:19 pm  
**To:** Mark Williams | Queenstown Trails Trust <[mark.williams@queenstowntrails.org.nz](mailto:mark.williams@queenstowntrails.org.nz)>  
**Cc:** Jeff Brown <[jeff@brownandcompany.co.nz](mailto:jeff@brownandcompany.co.nz)>  
**Subject:** RE: The Hills

Hi Willy,

Hope you're well.

Just checking that you received my email below with the plans you requested ok, or if you needed anything else to understand the proposed changes?

Many thanks,

Christine Edgley

Senior Planner

03 409 2258 | 027 588 8824

BROWN & COMPANY

PLANNING GROUP

This message contains confidential information and is intended only for the recipient. If you are not the recipient you should not disseminate, distribute or copy this e-mail. Please notify the sender immediately by e-mail if you have received this e-mail by mistake and delete this e-mail from your system. E-mail transmission cannot be guaranteed to be secure or error-free as information could be intercepted, corrupted, lost, destroyed, arrive late or incomplete, or contain viruses. The sender therefore does not accept liability for any errors or omissions in the contents of this message, which arise as a result of e-mail transmission. If verification is required please request a hard-copy version.

**From:** Christine Edgley

**Sent:** Monday, 13 January 2025 11:13 am

**To:** Mark Williams | Queenstown Trails Trust <[mark.williams@queenstowntrails.org.nz](mailto:mark.williams@queenstowntrails.org.nz)>

**Cc:** Jeff Brown <[jeff@brownandcompany.co.nz](mailto:jeff@brownandcompany.co.nz)>

**Subject:** RE: The Hills

Hi Willy,

Of course – please see attached copies of the both the existing Structure Plan, and the proposed amended Structure Plan.

I've indicated with an arrow the McDonnell Road connection point on both plans for easy spotting, although you can also zoom in on either plan for greater clarity on the indicative location of the trail within the zone too.

Regards,

Christine Edgley

Senior Planner

03 409 2258 | 027 588 8824

BROWN & COMPANY

PLANNING GROUP

This message contains confidential information and is intended only for the recipient. If you are not the recipient you should not disseminate, distribute or copy this e-mail. Please notify the sender immediately by e-mail if you have received this e-mail by mistake and delete this e-mail from your system. E-mail transmission cannot be guaranteed to be secure or error-free as information could be intercepted, corrupted, lost, destroyed, arrive late or incomplete, or contain viruses. The sender therefore does not accept liability for any errors or omissions in the contents of this message, which arise as a result of e-mail transmission. If verification is required please request a hard-copy version.

**From:** Mark Williams | Queenstown Trails Trust <[mark.williams@queenstowntrails.org.nz](mailto:mark.williams@queenstowntrails.org.nz)>

**Sent:** Monday, 13 January 2025 11:03 am

**To:** Christine Edgley <[Christine@brownandcompany.co.nz](mailto:Christine@brownandcompany.co.nz)>

**Cc:** Jeff Brown <[jeff@brownandcompany.co.nz](mailto:jeff@brownandcompany.co.nz)>

**Subject:** RE: The Hills

Hi Christine,

No problem – but could you send through a plan indicating the current alignment and proposed alignment again – It's much better for me to comment on effects if I can visualise the indicative routes and where people are heading.

Many thanks

Willy

**Mark Williams** | CEO | Queenstown Trails

**M:** +64 (0) 27 5540941 | **E:** [mark.williams@queenstowntrails.org.nz](mailto:mark.williams@queenstowntrails.org.nz)

[www.queenstowntrails.org.nz](http://www.queenstowntrails.org.nz)



**From:** Christine Edgley <[Christine@brownandcompany.co.nz](mailto:Christine@brownandcompany.co.nz)>

**Sent:** Monday, 13 January 2025 10:58 am

**To:** Mark Williams | Queenstown Trails Trust <[mark.williams@queenstowntrails.org.nz](mailto:mark.williams@queenstowntrails.org.nz)>

**Cc:** Jeff Brown <[jeff@brownandcompany.co.nz](mailto:jeff@brownandcompany.co.nz)>

**Subject:** The Hills

Hi Willy,

Hope you're well, and that you've had a relaxing holiday period.

We're getting in touch in relation to The Hills – you may recall that last year you were consulted regarding the location of the indicative future cycleway/trail within The Hills Resort Zone (as shown on the Structure Plan for the zone) in light of changes proposed to the location or extent of a number of activity areas in the zone. The primary change to the trail aspect was to have the connection to McDonnell Road moved approximately 400m to the south - from its current location south of the existing main access to The Hills, to adjacent to Arrowtown Retirement Village's northern boundary.

A formal plan change was lodged with QLDC in November – it included the relocated indicative cycleway/trail. The Council have since requested further information regarding the change to the location of the cycleway and the effect of this on trail users, and we were hoping to get some initial comment from you on this matter (noting that plan change is still to be publicly notified, and trail users themselves will be able to submit when it is).

Would you have any initial concerns, or anticipate a reduced user experience, as a result of relocating the McDonnell Rd connection / entry point? We are in the process of getting expert traffic input to address any potential safety implications of the change, so it is more about whether, in your opinion, the change would have any adverse effect on trail user experience.

Happy to answer any questions you might have, or discuss any of the above further – feel free to phone or email either myself (details below) or Jeff (copied in, ph.: 021 529 745) anytime.

Kind regards,

Christine Edgley

Senior Planner

03 409 2258 | 027 588 8824

BROWN & COMPANY

PLANNING GROUP

This message contains confidential information and is intended only for the recipient. If you are not the recipient you should not disseminate, distribute or copy this e-mail. Please notify the sender immediately by e-mail if you have received this e-mail by mistake and delete this e-mail from your system. E-mail transmission cannot be guaranteed to be secure or error-free as information could be intercepted, corrupted, lost, destroyed, arrive late or incomplete, or contain viruses. The sender therefore does not accept liability for any errors or omissions in the contents of this message, which arise as a result of e-mail transmission. If verification is required please request a hard-copy version.