

## Item 2: Wānaka Lakefront Development ‘Stage 6’

**SESSION TYPE:** Workshop

**PURPOSE/DESIRED OUTCOME:**

The purpose is to seek direction from the Wānaka-Upper Clutha Community Board on whether Council should proceed with formal planning for a Wānaka Lakefront Development Plan ‘Stage 6’ between the Mount Aspiring carpark and the Watersports carpark.

**DATE/START TIME:**

Thursday, 7 August 2025 at 12.30pm

**TIME BREAKDOWN:**

Presentation: 10 minutes  
Debate/Discussion: 20 minutes

**Prepared by:**



**Name:** Kat Banyard  
**Title:** Senior Parks Advisor  
25 July 2025

**Reviewed and Authorised by:**



**Name:** Ken Bailey  
**Title:** General Manager Community Services  
25 July 2025

**ATTACHMENTS:**

A	Presentation
---	--------------

# Wānaka Lakefront Development – ‘Stage 6’

Wānaka-Upper Clutha Community Board Workshop  
7 August 2025

# Purpose

- > Seek direction from the Community Board on whether Council should begin formal planning for a Wānaka Lakefront 'Stage 6' (between Mount Aspiring Carpark and Watersports Carpark)



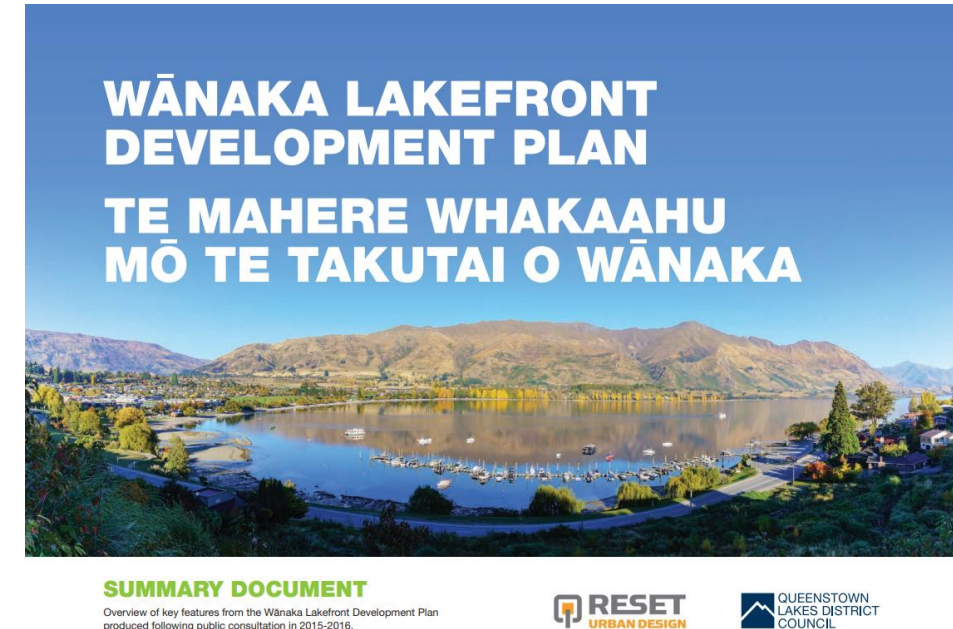
# Background

- > 2016 Wānaka Lakefront Development Plan (WLDP) didn't include this area due to uncertainty on the location of the Watersports Facility
- > Watersports upgrade in 2024 focused on active travel connection and a new bridge over Stoney Creek due to budget constraints
- > Ongoing issues like protection of green space and parking are being addressed through lots of small improvements e.g. new fencing

# Wānaka Lakefront Development Plan

‘Big moves’ that guide the Wānaka Lakefront Development Plan (WLDP), shaped by community feedback:

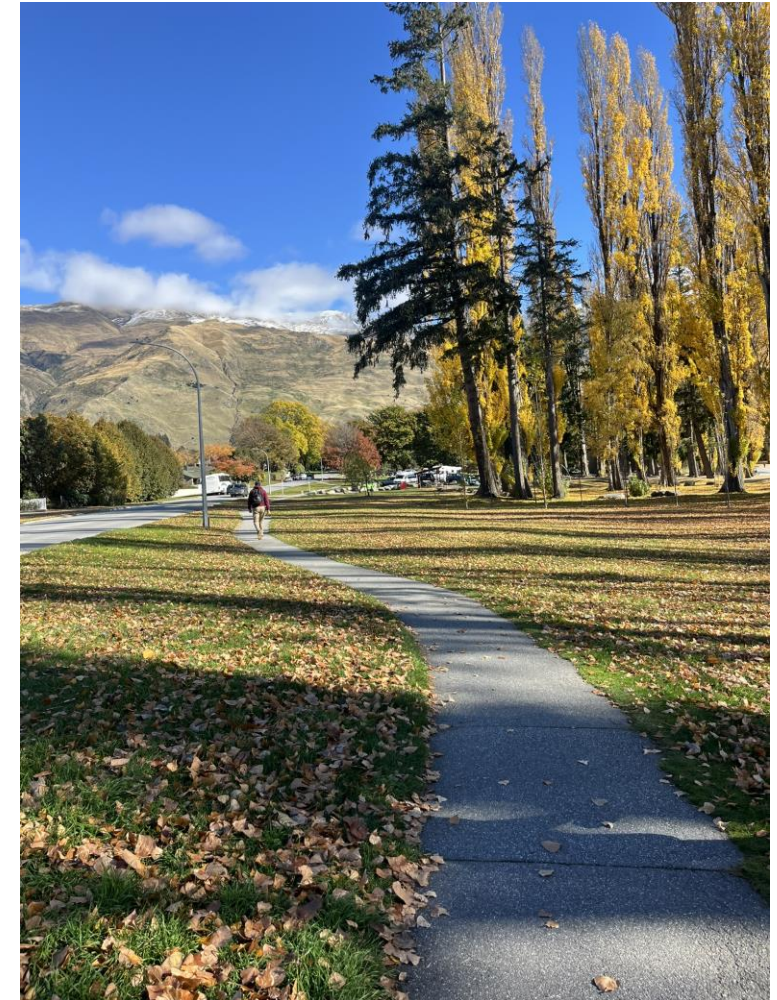
- > Restore and develop ecology through ecological enhancements and native revegetation planting.
- > Provide continuous access with a pedestrian/cycleway promenade around the lakefront.
- > Improve land use with lakefront linear parks and precincts.
- > Provide a range of facilities.





# Considerations

- > Bus and car parking
- > Native restoration
- > Active travel connections
- > Access to the lake
- > Signage
- > Furniture
- > Tree Succession
- > Continuity of maintenance



# Discussion

- > Status quo – Continue with ad hoc small changes.
- > Begin formal planning (landscape plan) for this area based on WLDP four big moves and input as a potential project into next Long Term Plan 2027/2037.

