



GIBBSTON VALLEY, QUEENSTOWN
(ASSEMBLY ARCHITECTS LTD)



JACKS POINT, QUEENSTOWN
(ASSEMBLY ARCHITECTS LTD)



JACKS POINT, QUEENSTOWN



241 TUCKER BEACH RD, QUEENSTOWN
(WARREN AND MAHONEY)

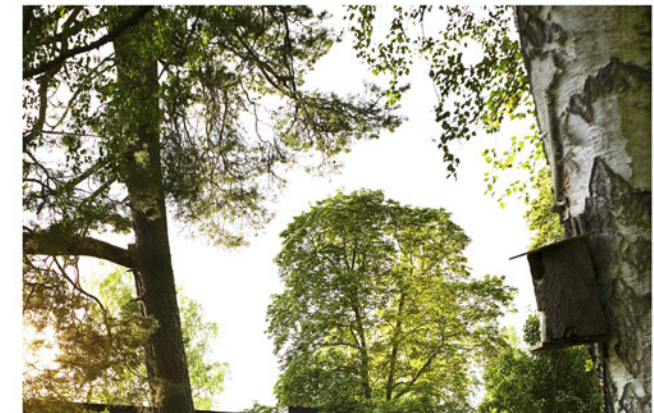
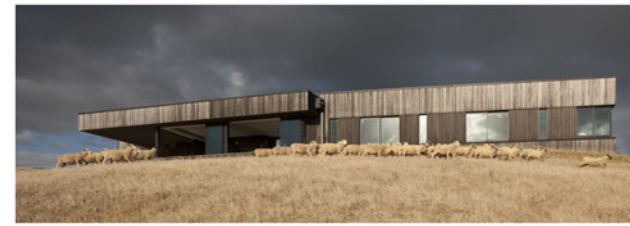


ARROWTOWN-LAKE HAYES RD, LAKE HAYES



RUTHERFORD RD, LAKE HAYES





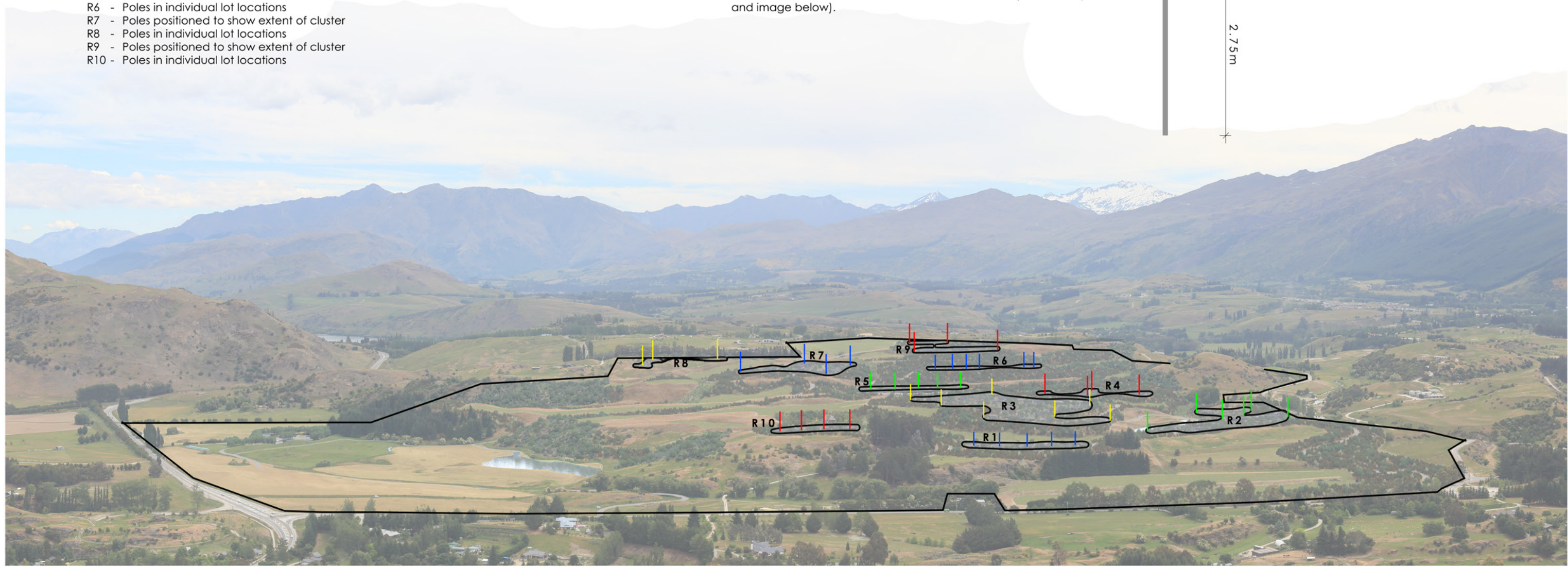
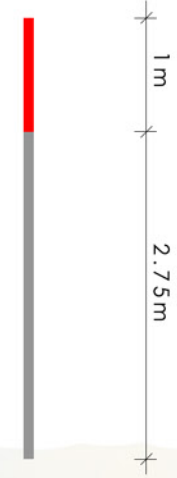


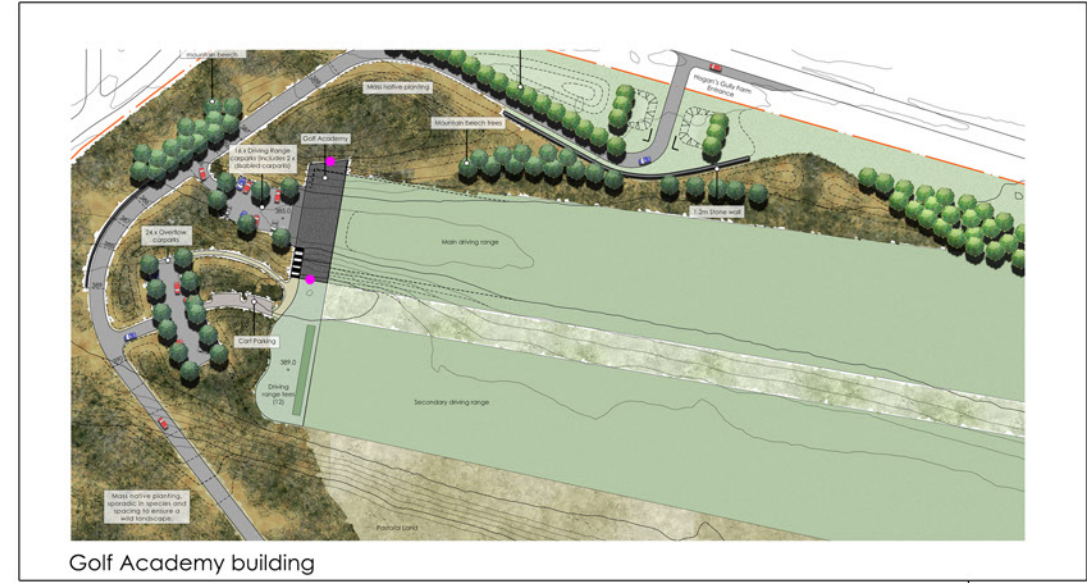
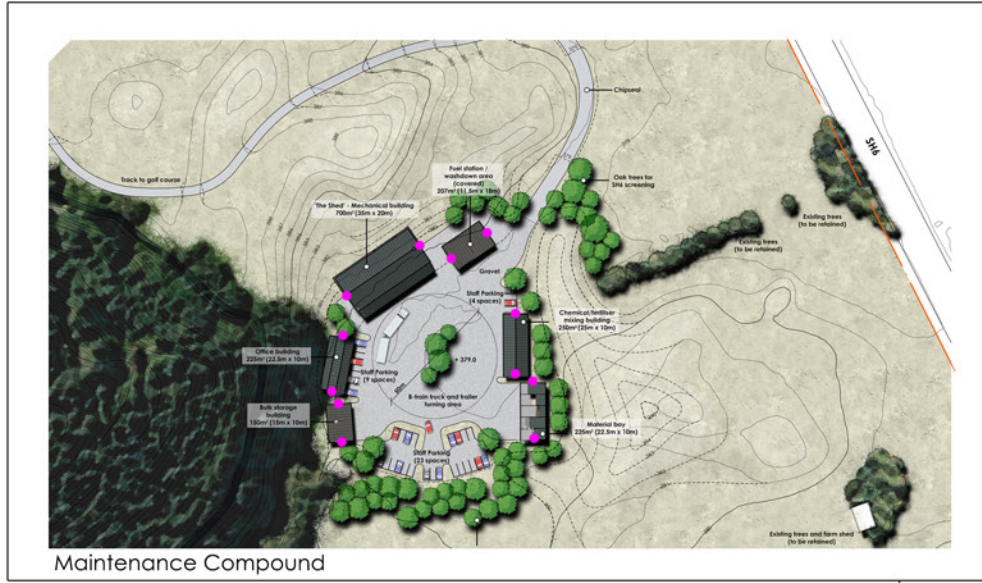
KEY

- R1 - Poles in individual lot locations
- R2 - Poles positioned to show extent of cluster
- R3 - Poles positioned to show extent of cluster
- R4 - Poles in individual lot locations
- R5 - Poles in individual lot locations
- R6 - Poles in individual lot locations
- R7 - Poles positioned to show extent of cluster
- R8 - Poles in individual lot locations
- R9 - Poles positioned to show extent of cluster
- R10 - Poles in individual lot locations

POLE DETAIL

- Pole height indicates top of roof for indicative dwellings at designed datum levels for lots and clusters.
- Each pole to have the top 1m painted in the specified colour for the extent of the residential cluster or individual lot (Refer to key and image below).





- F.F.L 379.0 - Bulk Storage building - Roof/Pole heights = 4.7m
- F.F.L 379.0 - Office building - Roof/Pole heights = 4.7m
- F.F.L 379.0 - 'The Shed' - Roof/Pole heights = 5.5m
- F.F.L 379.0 - Fuel Station/Washdown area - Roof/Pole heights = 4.7m
- F.F.L 379.0 - Chemical/Fertiliser building - Roof/Pole heights = 4.15m
- F.F.L 379.0 - Material Bay - Roof/Pole heights = 3.0m

- F.F.L 427.0 - Gym - Roof/Pole heights = 4.0m
- F.F.L 428.5 - Clubhouse - Roof/Pole heights = 4.0m
- F.F.L 428.5 - Cart Store - Roof/Pole heights = 4.0m

F.F.L 385.11 - Academy Building - Roof/Pole heights = 6.123m



Pole locations (in pink) indicated on individual plans above for Maintenance Compound buildings, Clubhouse, and Golf Academy



