



QUEENSTOWN PARK SUBMISSION

ANNEXURE D

Recommended amendment to the RR2
development area boundary

June 2017



Area that I consider future building development should be excluded from

Current RR3 Boundary

QUEENSTOWN PARK SUBMISSION

ANNEXURE E

Recommended amendment to the RR3 development area boundary

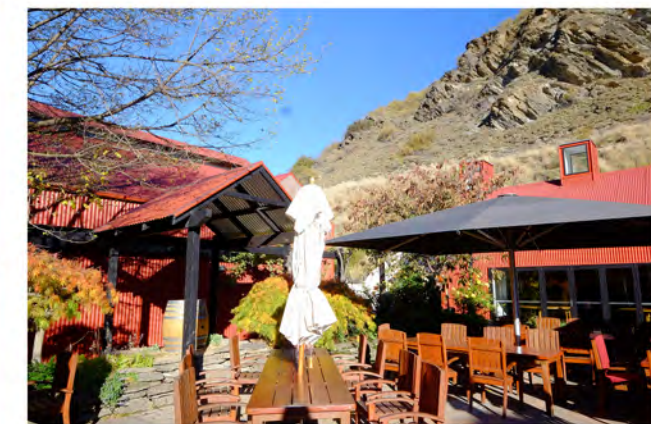
June 2017



Lincoln University Campus



Craggy Range Winery, Hawkes Bay



Gibbston Valley Winery



Arrowtown



The Hermitage, Mt Cook / Aoraki

QUEENSTOWN PARK SUBMISSION

ANNEXURE F₂

New Zealand villages & village - like development

June 2017

Bibury, Cotswolds UK



Waits River Village, Vermont



Arcadia, New England, USA



Gruyeres, Switzerland

Letcombe Regis, UK



Sighisoara, Romania

The Hermitage / M. Cook / Aoraki

QUEENSTOWN PARK SUBMISSION

ANNEXURE F₄

International villages & village - like development

June 2017

ReGen Village concept, Denmark



Zionstar village concept



Seaside, Florida, USA

QUEENSTOWN PARK SUBMISSION

ANNEXURE F₅

International villages & village - like development

June 2017



Cambridge Terrace, Terrace Downs



Blanket Bay



Black Barn, Hawkes Bay

QUEENSTOWN PARK SUBMISSION

ANNEXURE F₆

Lodges & Residential Development

June 2017

Chard Farm



Atamisque Lodges, Argentina



Cape Kidnappers Lodge

Tarureka Estate, Wairarapa

b r o w n



High Barn, The Granary



Fiordland Lodge



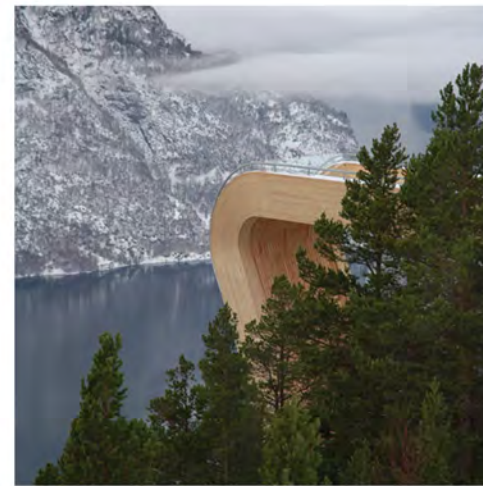


QUEENSTOWN PARK SUBMISSION

ANNEXURE F₉

Lodges & Residential Development

June 2017

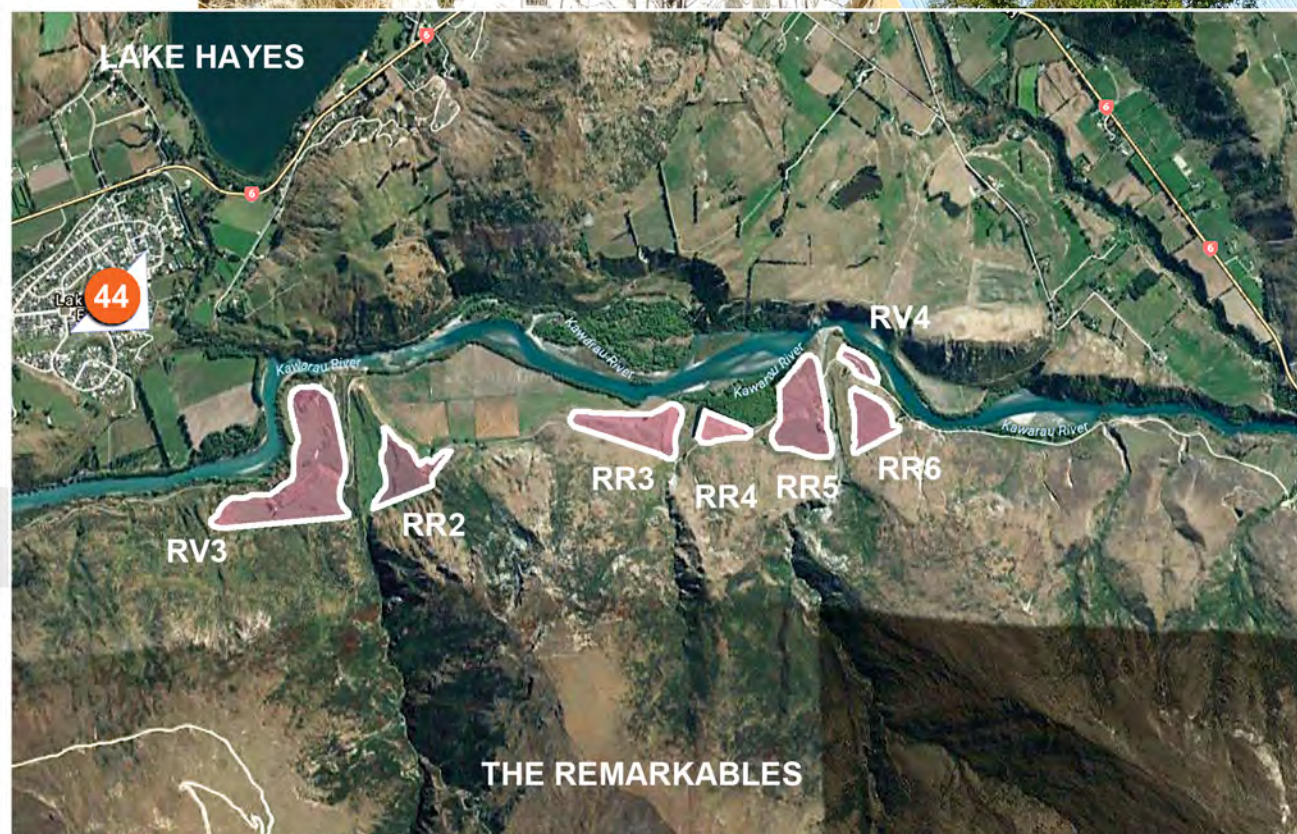


QUEENSTOWN PARK SUBMISSION

ANNEXURE F₁₀

Lodges & Residential Development

June 2017

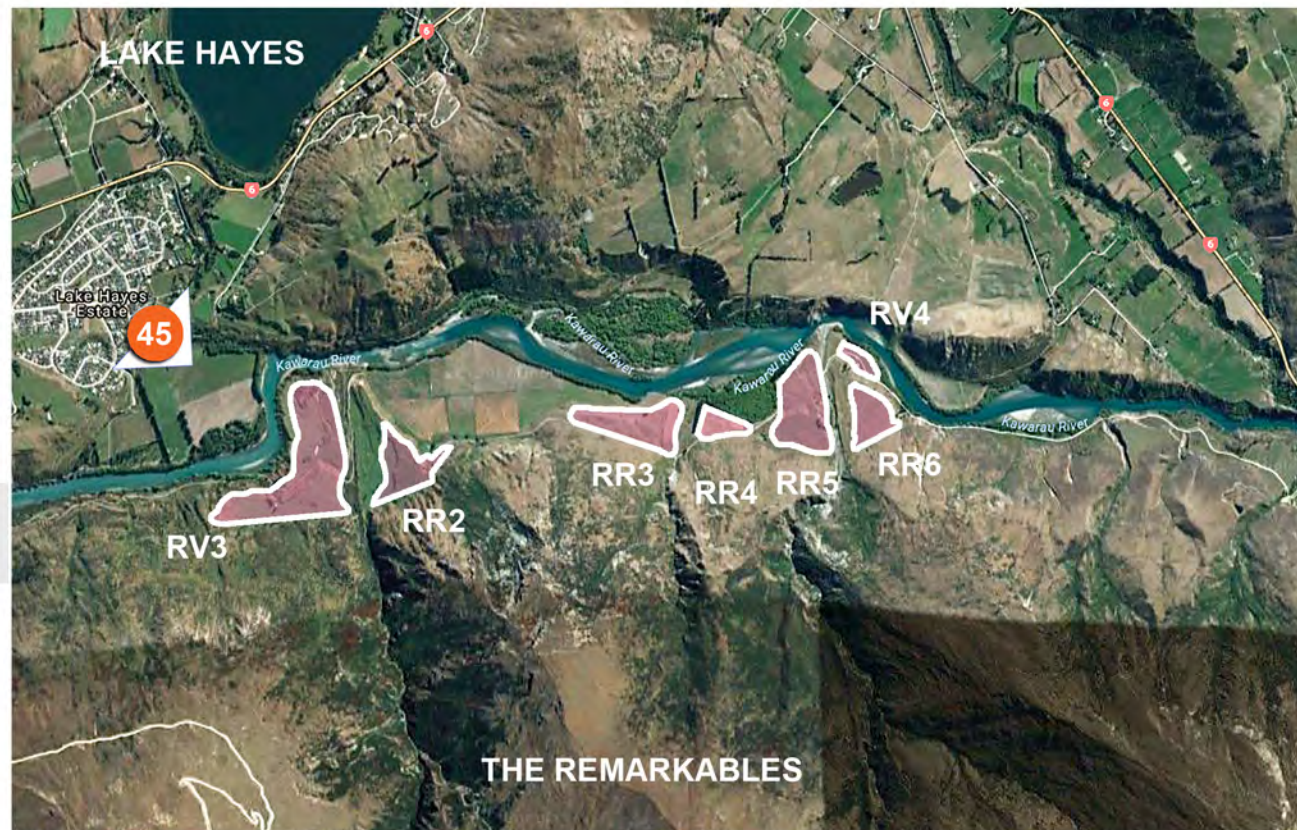


QUEENSTOWN PARK SUBMISSION

ANNEXURE G

Photo Location 44: Looking from the reserve within Lake Hayes Estate towards the terraces of RV3

June 2017

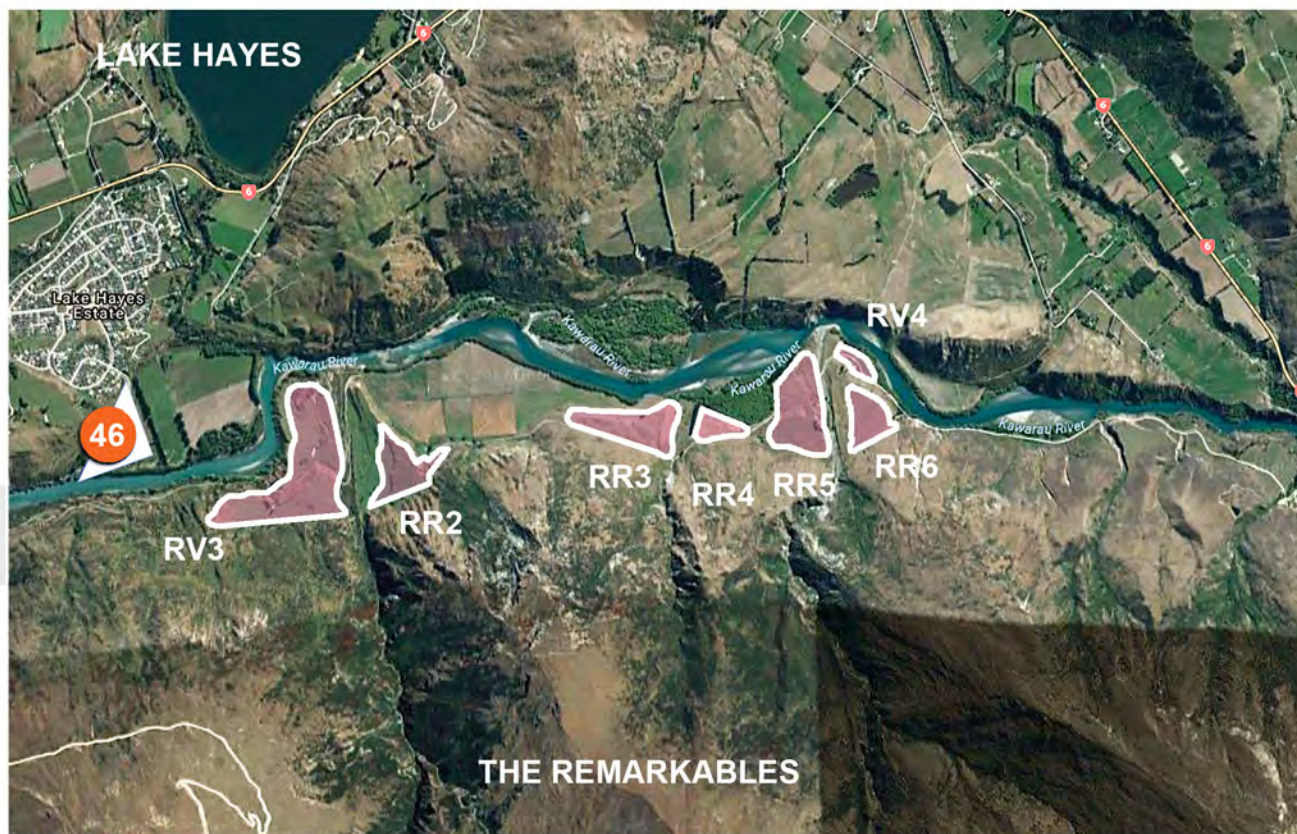


QUEENSTOWN PARK SUBMISSION

ANNEXURE G

Photo Location 45: Looking from Judge & Jury
Close within Lake Hayes Estate towards the
terraces of RV3

June 2017

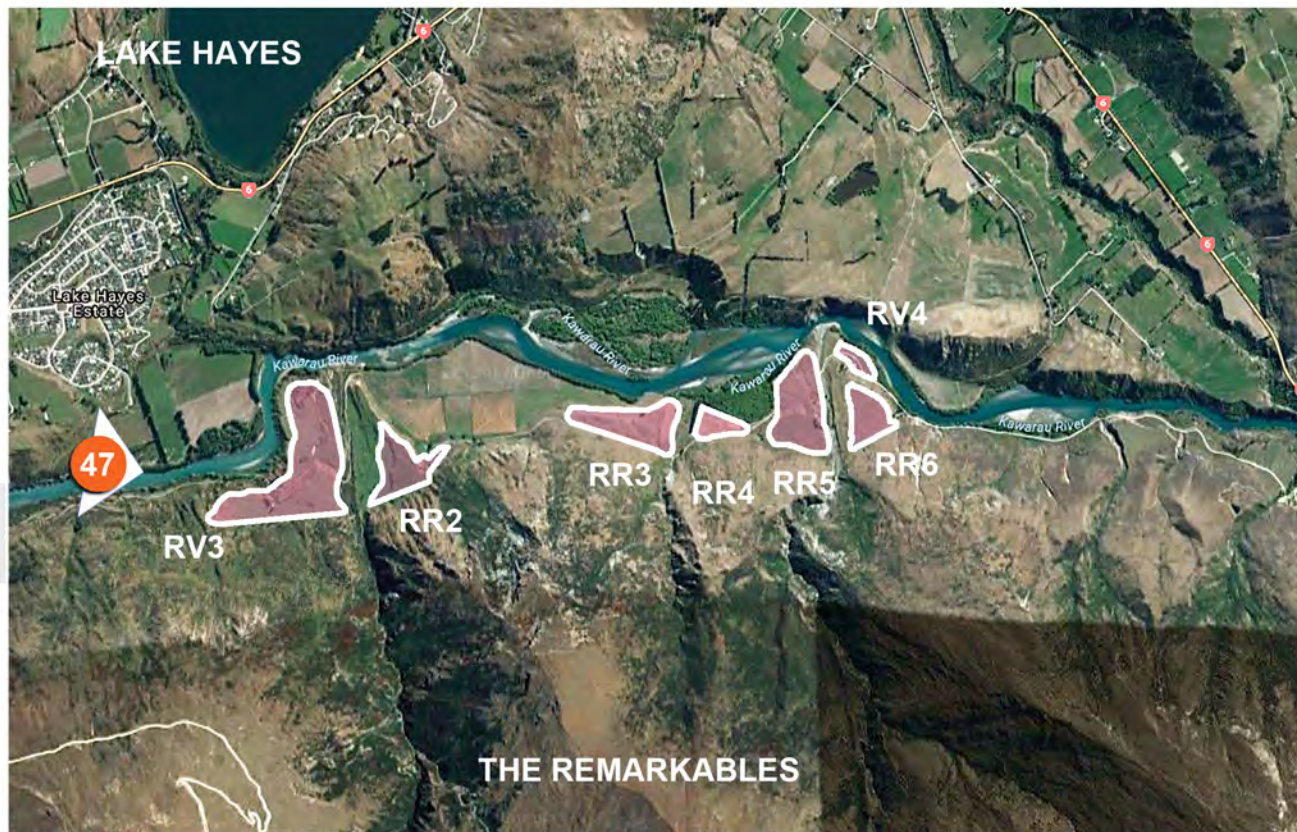


QUEENSTOWN PARK SUBMISSION

ANNEXURE G

Photo Location 46: Looking towards RV3 from the public walkway near the Kawarau River - below Lake Hayes Estate

June 2017

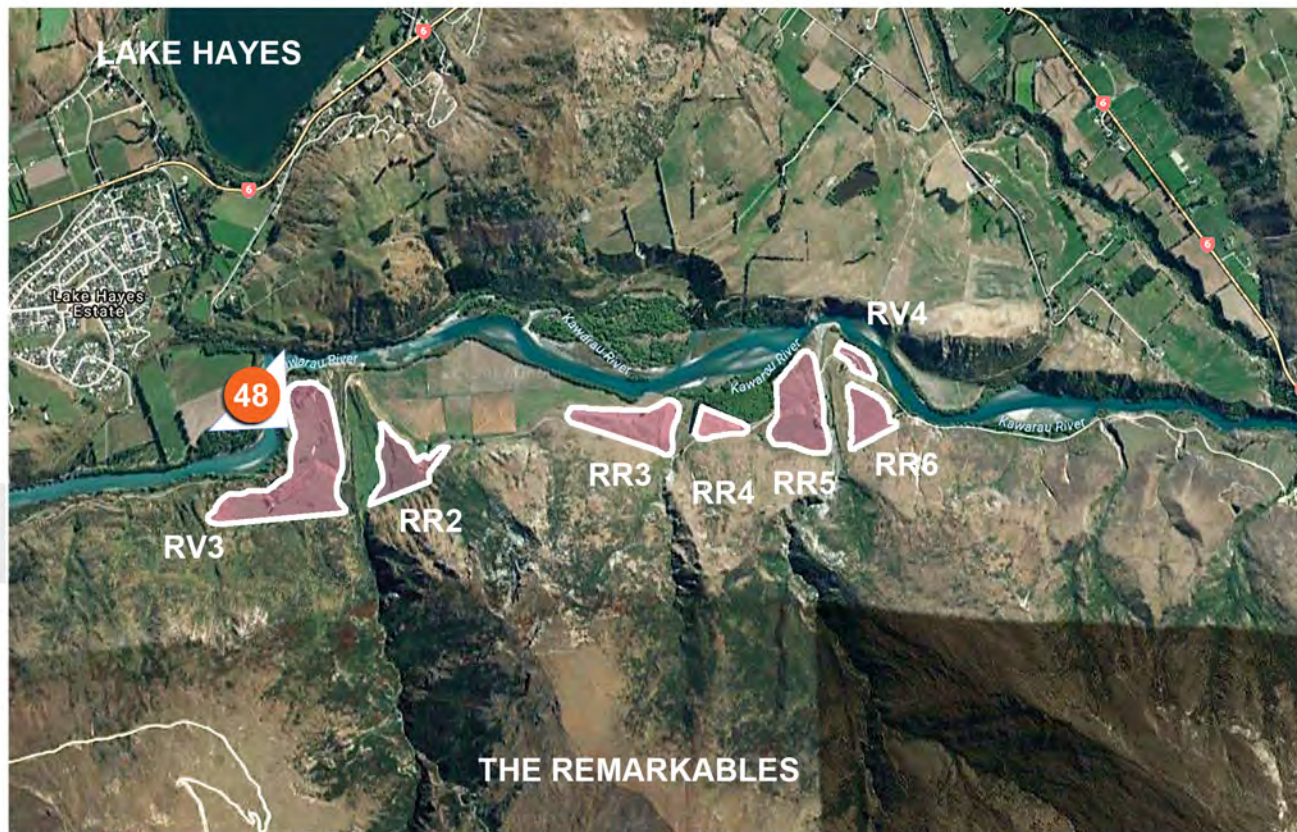


QUEENSTOWN PARK SUBMISSION

ANNEXURE G

Photo Location 47: Looking towards RV3 from the edge of the Kawarau River below Lake Hayes Estate

June 2017

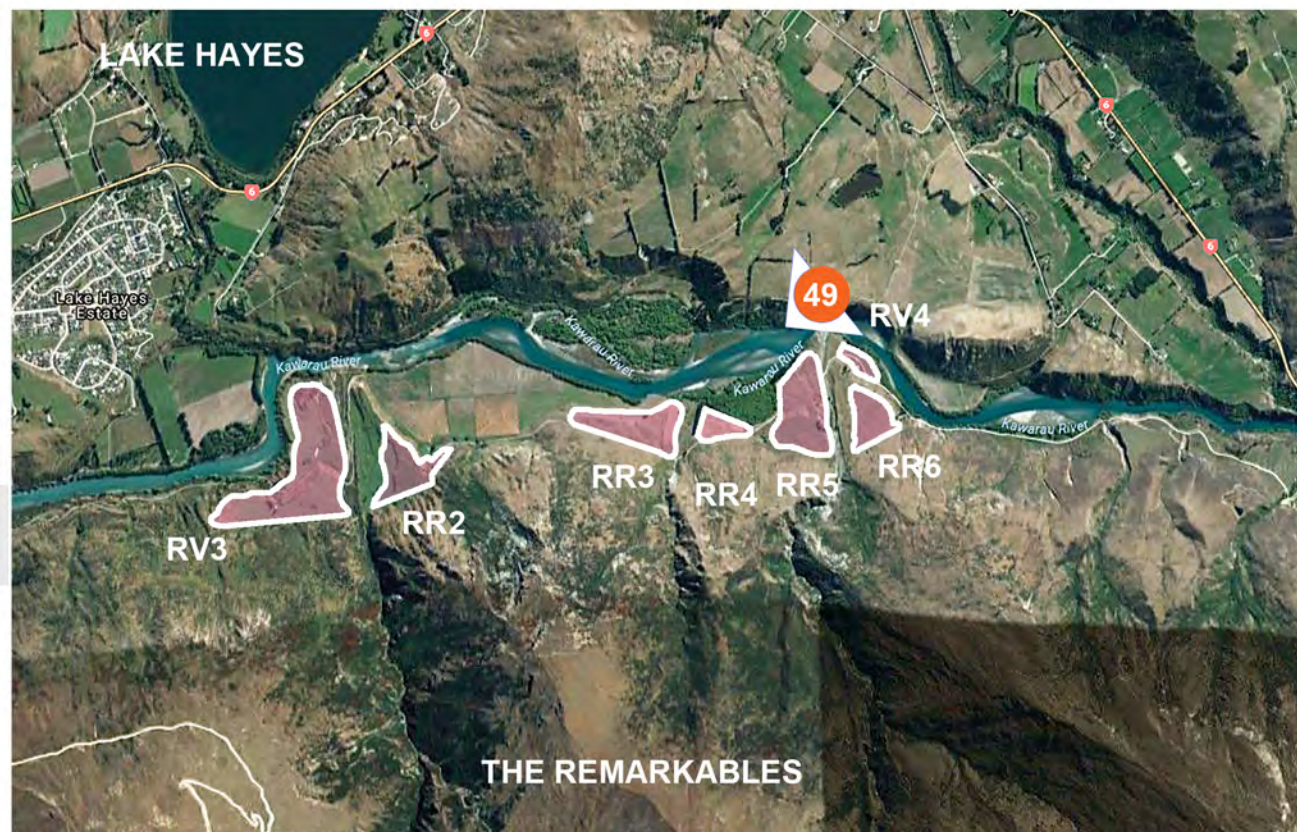


QUEENSTOWN PARK SUBMISSION

ANNEXURE G

Photo Location 48: looking directly towards RV3 from the opposite side of the Kawarau River near Lake Hayes Estate

June 2017

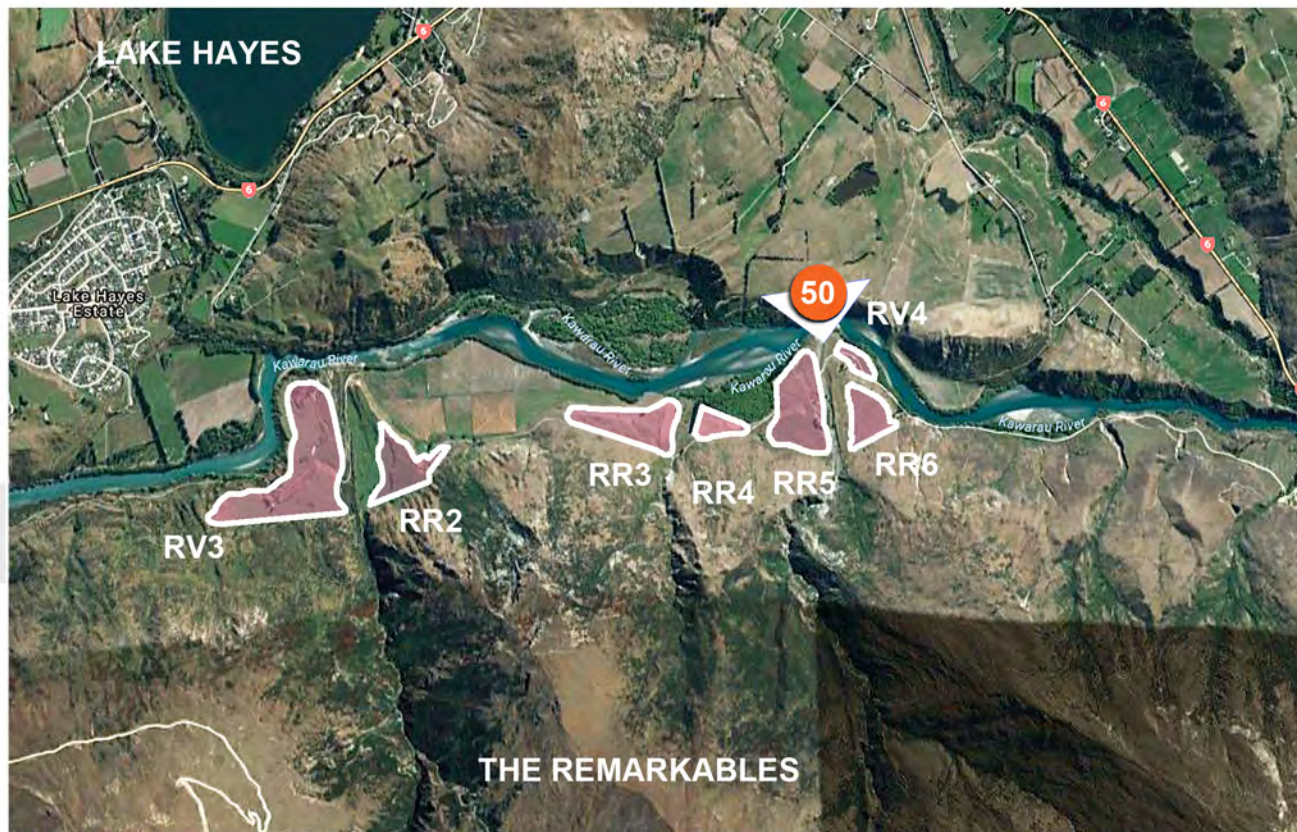


QUEENSTOWN PARK SUBMISSION

ANNEXURE G

Photo Location 49: looking towards the RR4, RR3 & RR2 development areas from part of the cycle trail past Morven Hill

June 2017



QUEENSTOWN PARK SUBMISSION

ANNEXURE G

Photo Location 50: looking down on the RR5, RR6 & RV4 development areas from part of the cycle trail past Morven Hill

June 2017



QUEENSTOWN PARK SUBMISSION

ANNEXURE H₅₁

Photo Locations for "Sketch Up" montages of indicative village concept within the RV3 development area

June 2017



ANNEXURE H₅₂

"Sketch Up" view from Lake Hayes Estate
towards the RV3 village (indicative only)

June 2017



ANNEXURE H₅₃

"Sketch Up" view from the edge of the Kawarau River towards the RV3 village (indicative only)

June 2017



ANNEXURE H₅₄

"Sketch Up" view from the edge of the Kawarau River towards the RV3 village (indicative only)

June 2017