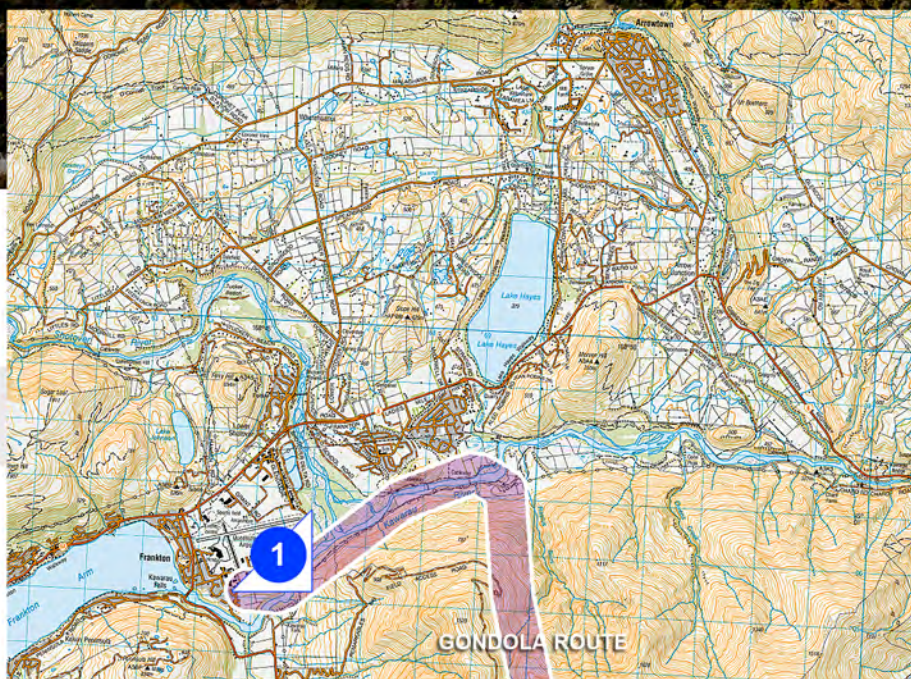




EVIDENCE OF STEPHEN BROWN (LANDSCAPE) **ANNEXURES A - H**

- ANNEXURE A SERIES:** photos towards gondola corridor
- ANNEXURE B SERIES:** aerial views of gondola corridor
- ANNEXURE C SERIES:** site photos of proposed development areas
- ANNEXURE D:** proposed amendments to development area RR2
- ANNEXURE E:** proposed amendments to development area RR3
- ANNEXURE F SERIES:** images of villages, lodges & residential development
- ANNEXURE G SERIES:** photos towards proposed development areas
- ANNEXURE H SERIES:** "sketch up" montages of the RV3 village area

June 2017

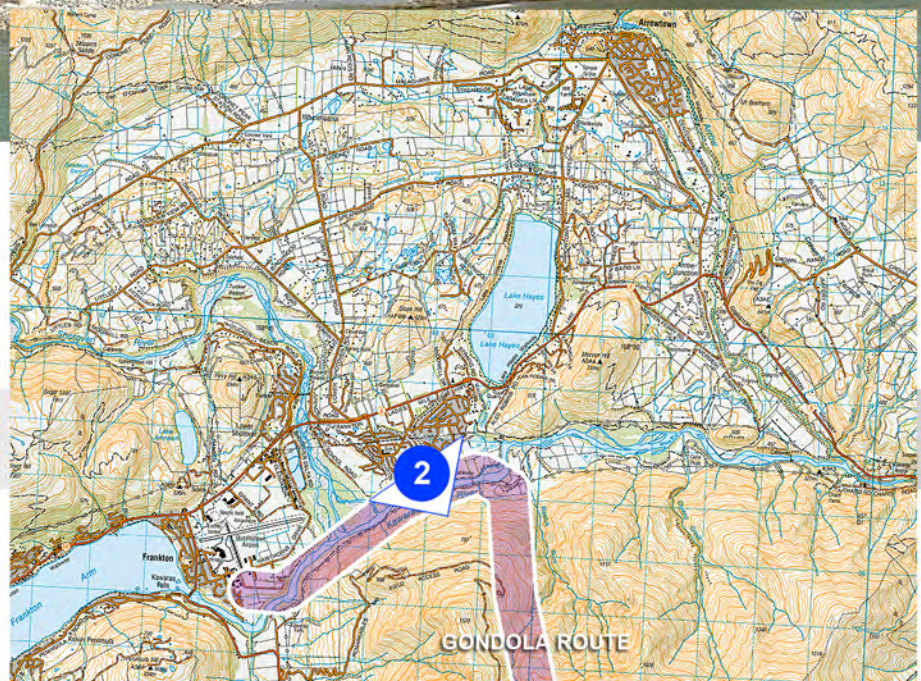


QUEENSTOWN PARK SUBMISSION

ANNEXURE A

Photo Location 1: the cycle trail near Queenstown Airport & the RPZ

June 2017

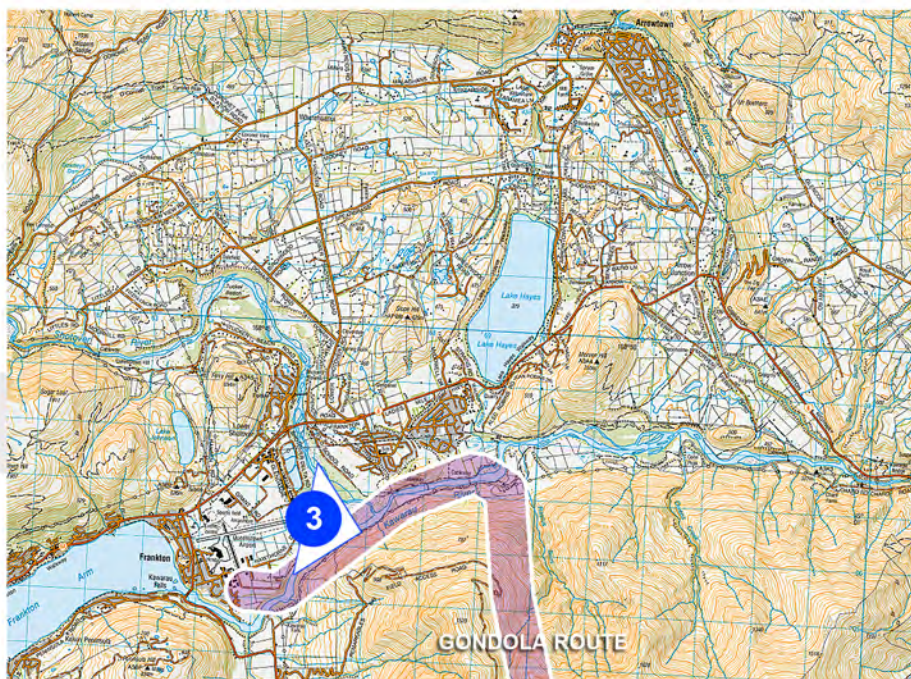


QUEENSTOWN PARK SUBMISSION

ANNEXURE A

Photo Location 2: the cycle trail next to the Kawarau River near Lake Hayes Estate

June 2017

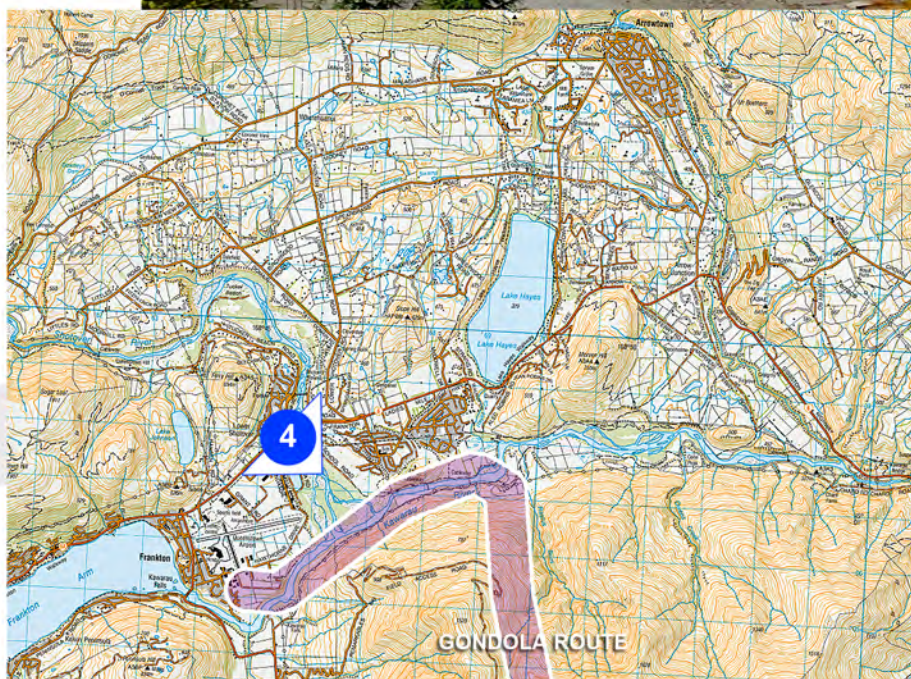


QUEENSTOWN PARK SUBMISSION

ANNEXURE A

Photo Location 3: Hawthorne Drive overlooking the Shotover & Kawarau Rivers

June 2017

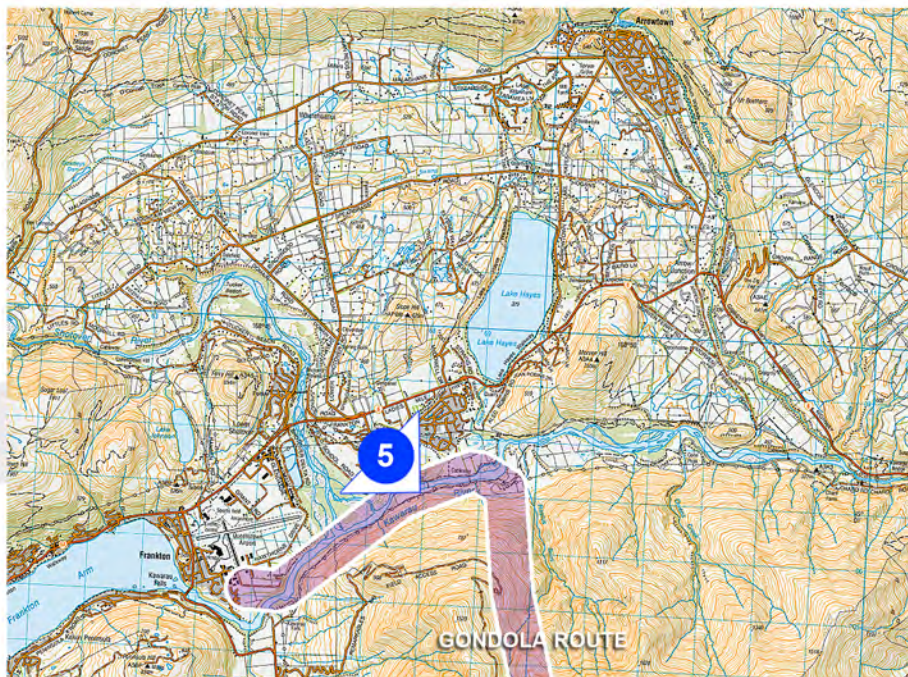


QUEENSTOWN PARK SUBMISSION

ANNEXURE A

Photo Location 4: SH6 Bridge over the Shotover River

June 2017

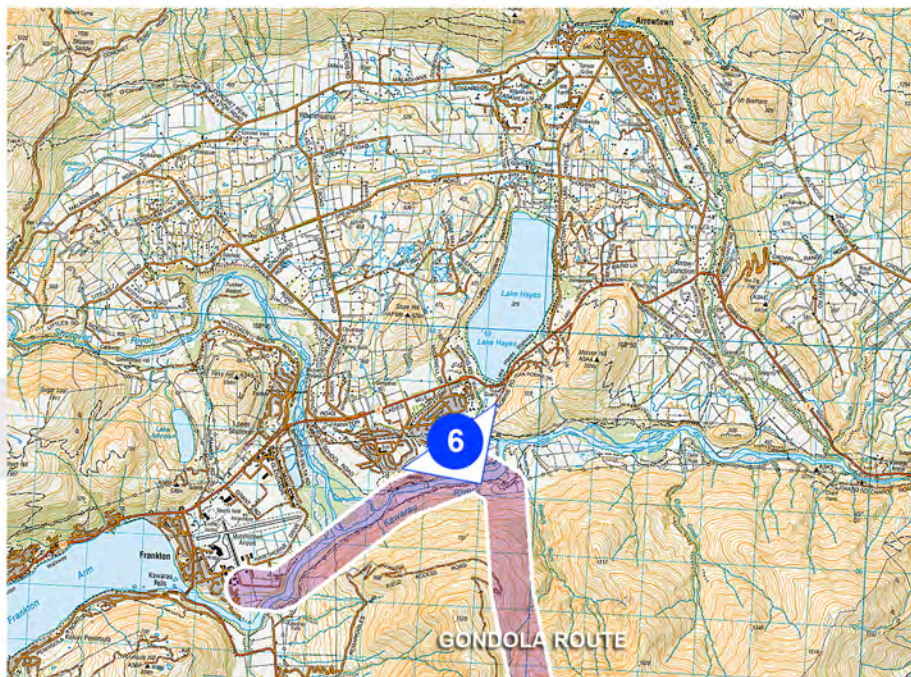


QUEENSTOWN PARK SUBMISSION

ANNEXURE A

Photo Location 5: outside the primary school within the Shotover Country Estate

June 2017



QUEENSTOWN PARK SUBMISSION

ANNEXURE A

Photo Location 6: Judge & Jury Close on the edge of Lake Hayes Estate

June 2017

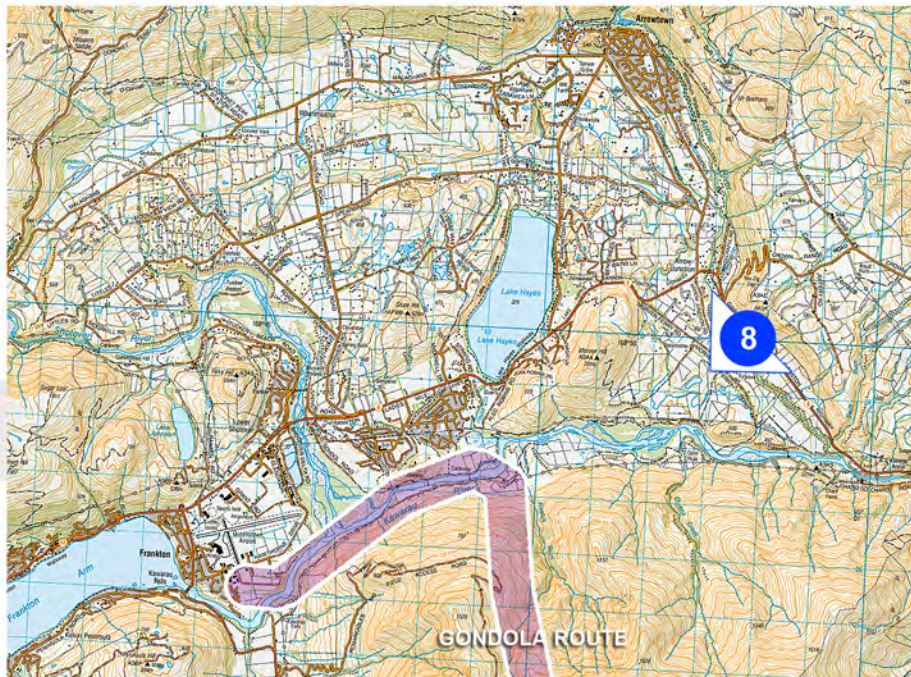


QUEENSTOWN PARK SUBMISSION

ANNEXURE A

Photo Location 7: the cycle trail on Morven Hill looking up the Kawarau River valley

June 2017

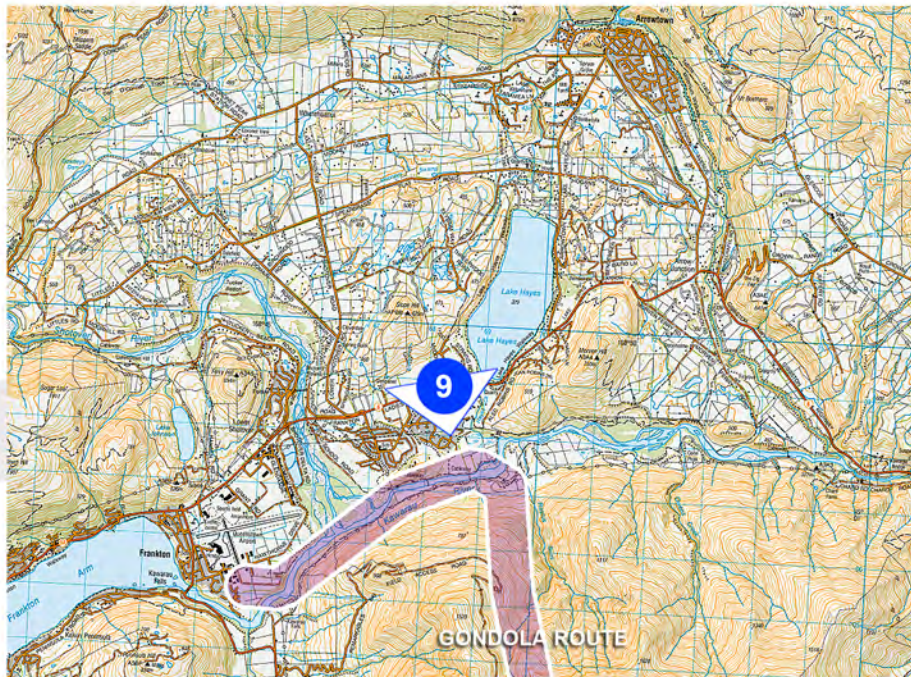


QUEENSTOWN PARK SUBMISSION

ANNEXURE A

Photo Location 8: SH6 between Morven Hill & the Gibbston Valley (Google Earth image)

June 2017

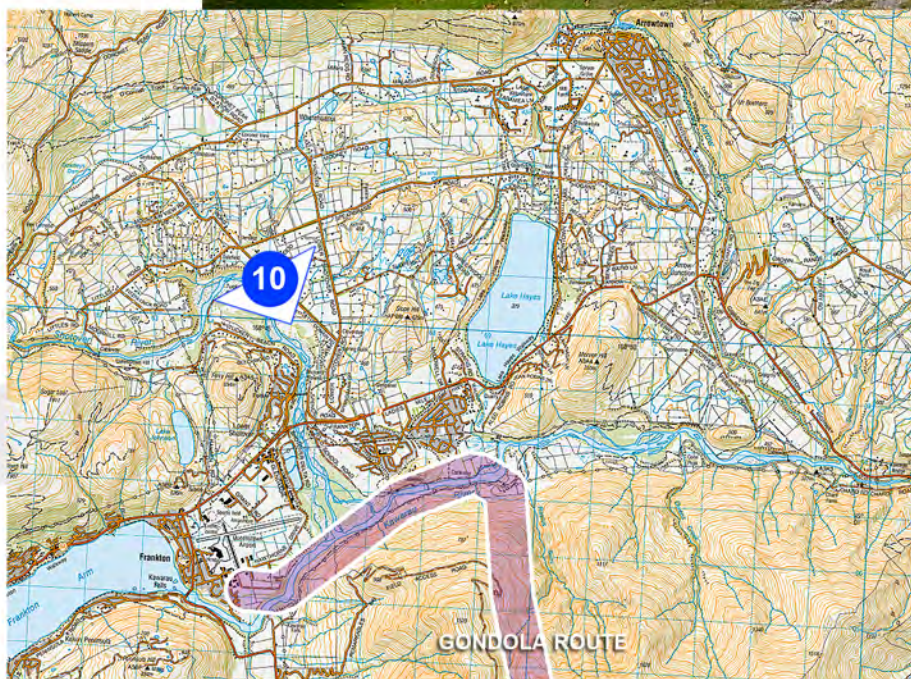


QUEENSTOWN PARK SUBMISSION

ANNEXURE A

Photo Location 9: SH6 / Ladies Mile Highway
above Lake Hayes Estate

June 2017

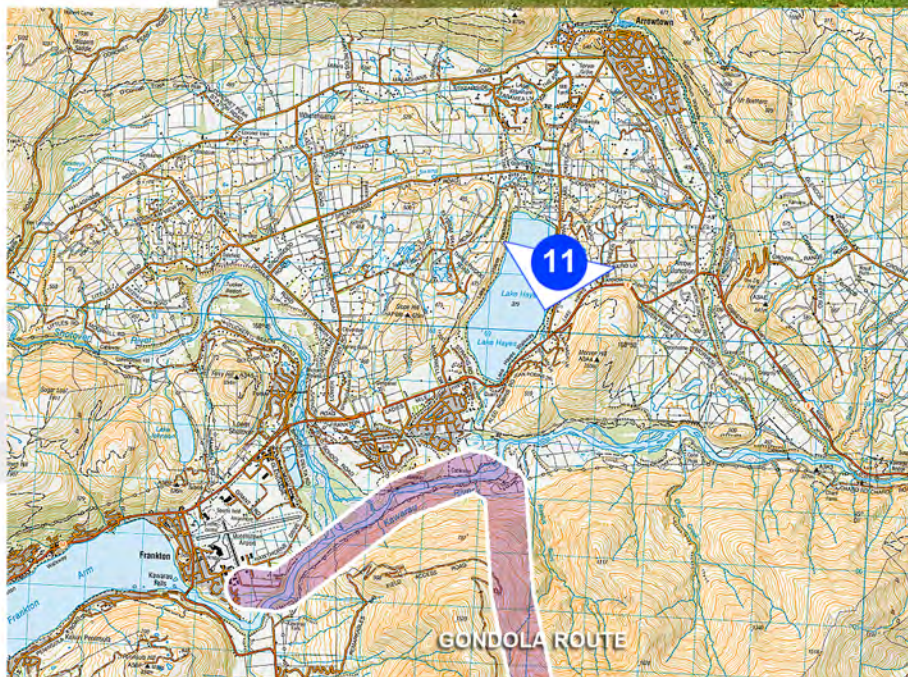


QUEENSTOWN PARK SUBMISSION

ANNEXURE A

Photo Location 10: Domain Road near
Brichwood Road

June 2017

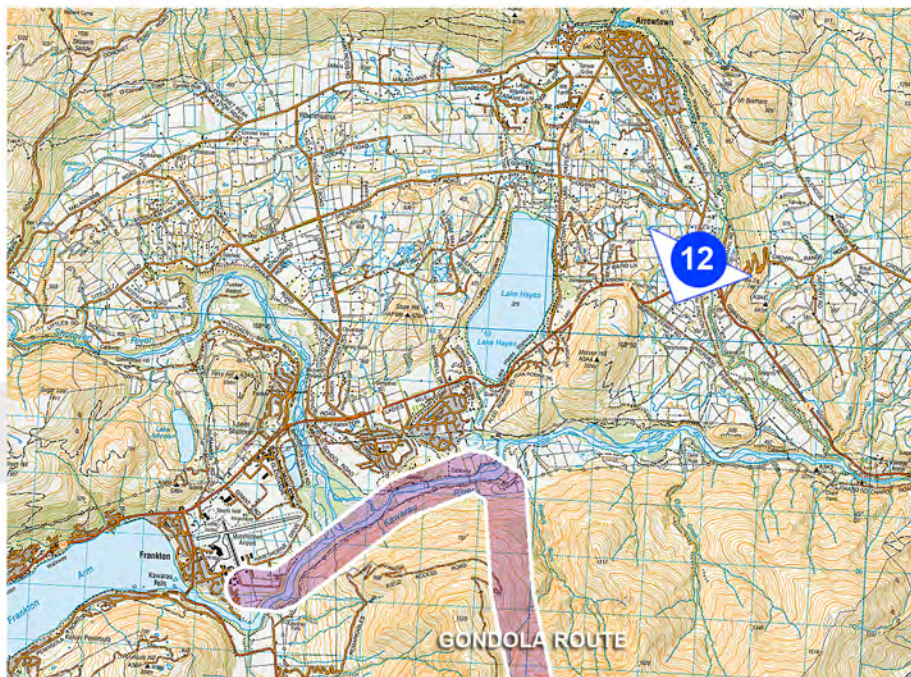


QUEENSTOWN PARK SUBMISSION

ANNEXURE A

Photo Location 11: Arrowtown Lake Hayes Road near Bendemeer Station

June 2017



QUEENSTOWN PARK SUBMISSION

ANNEXURE A

Photo Location 12: McDonnell Road near Arrow Junction

June 2017

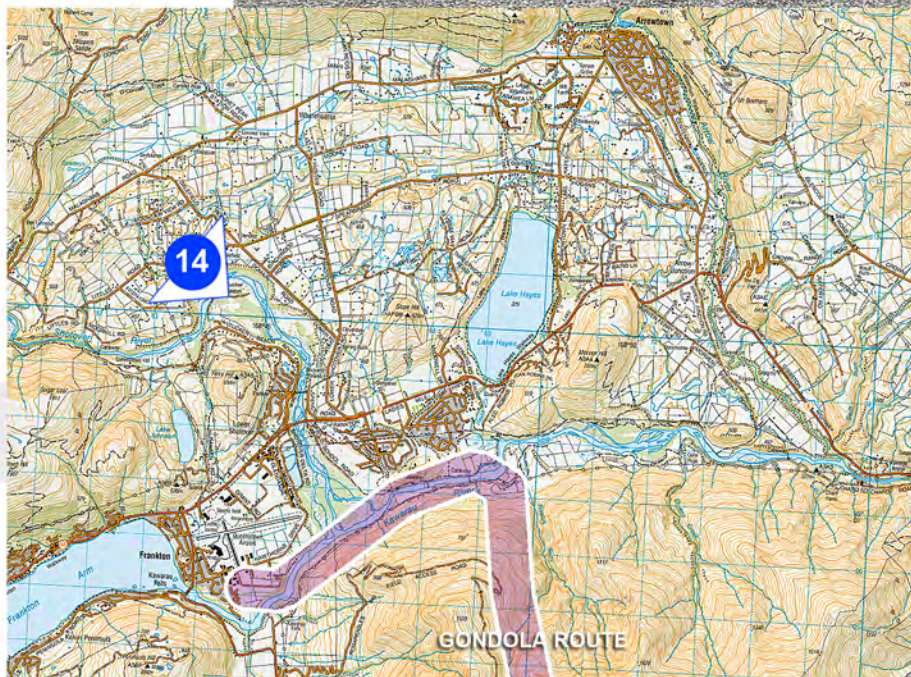


QUEENSTOWN PARK SUBMISSION

ANNEXURE A

Photo Location 13: Littles Road near the Shotover Terrace

June 2017

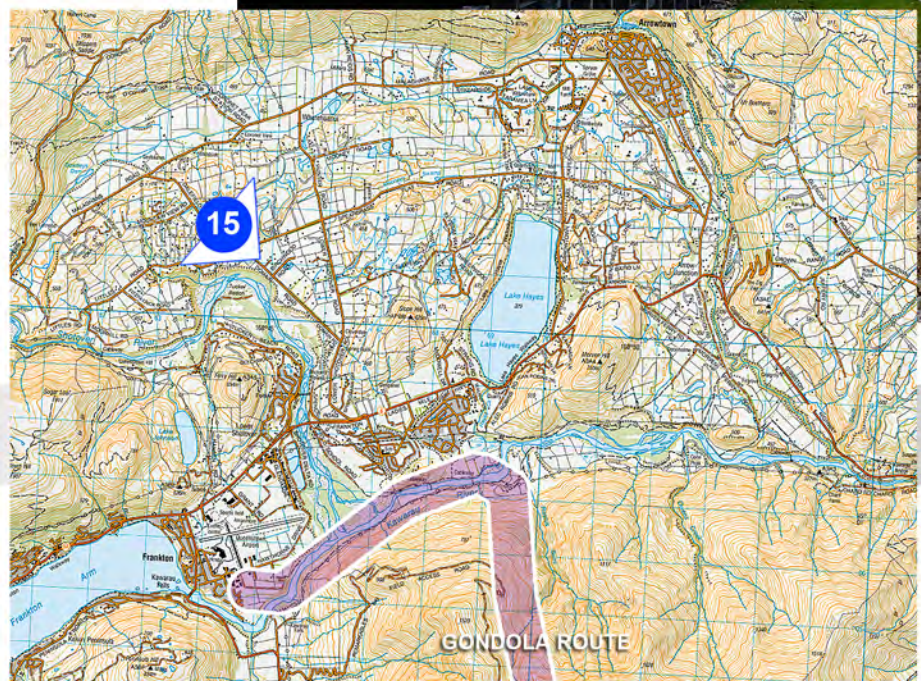


QUEENSTOWN PARK SUBMISSION

ANNEXURE A

Photo Location 14: Littles Road west of Dalefield and Domain Road

June 2017

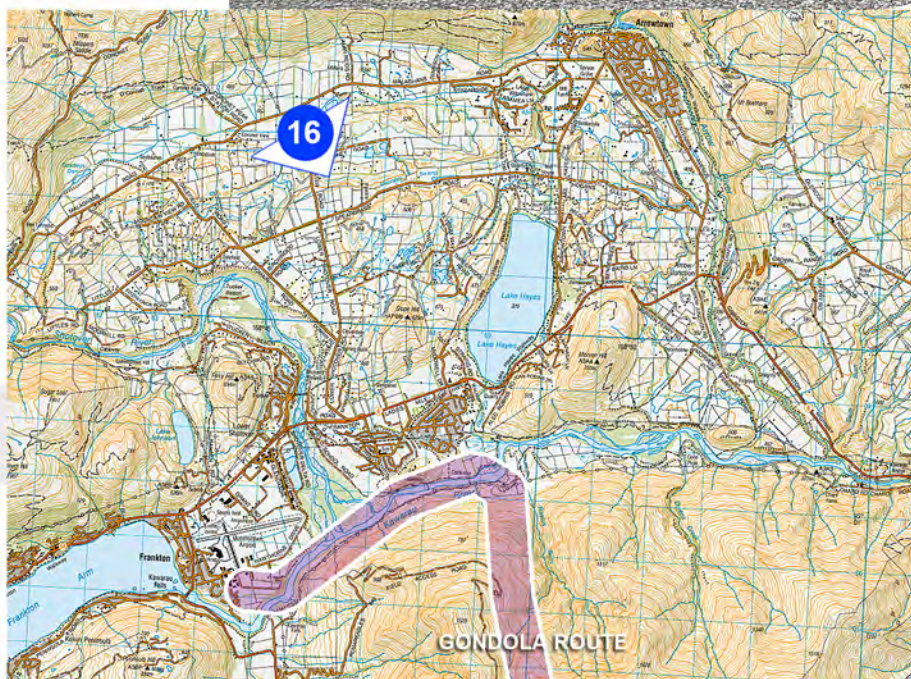


QUEENSTOWN PARK SUBMISSION

ANNEXURE A

Photo Location 15: Dalefield Road south of Mountain View Road

June 2017

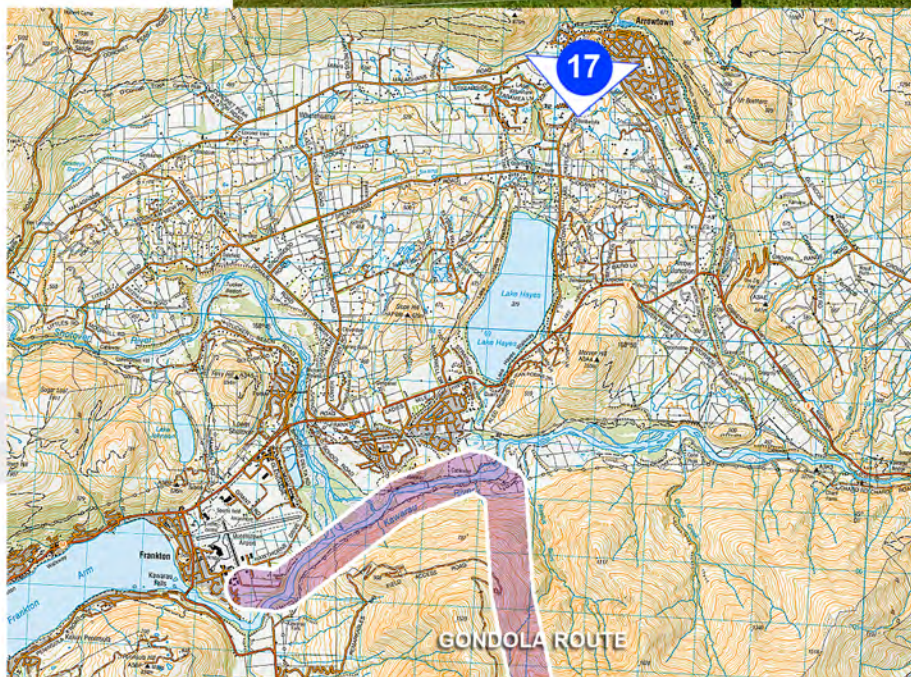


QUEENSTOWN PARK SUBMISSION

ANNEXURE A

Photo Location 16: Wharehuanui Road near Malaghans Road

June 2017



QUEENSTOWN PARK SUBMISSION

ANNEXURE A

Photo Location 17: Malaghans Road opposite the Millbrook Golf Course driving range

June 2017

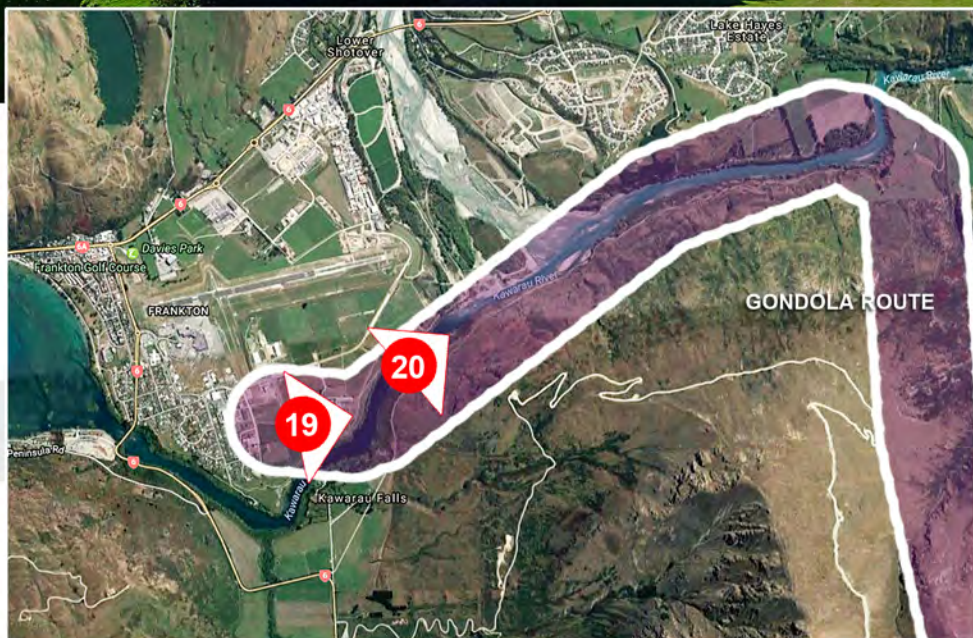


QUEENSTOWN PARK SUBMISSION

ANNEXURE A

Photo Location 18: Coronet Peak

June 2017

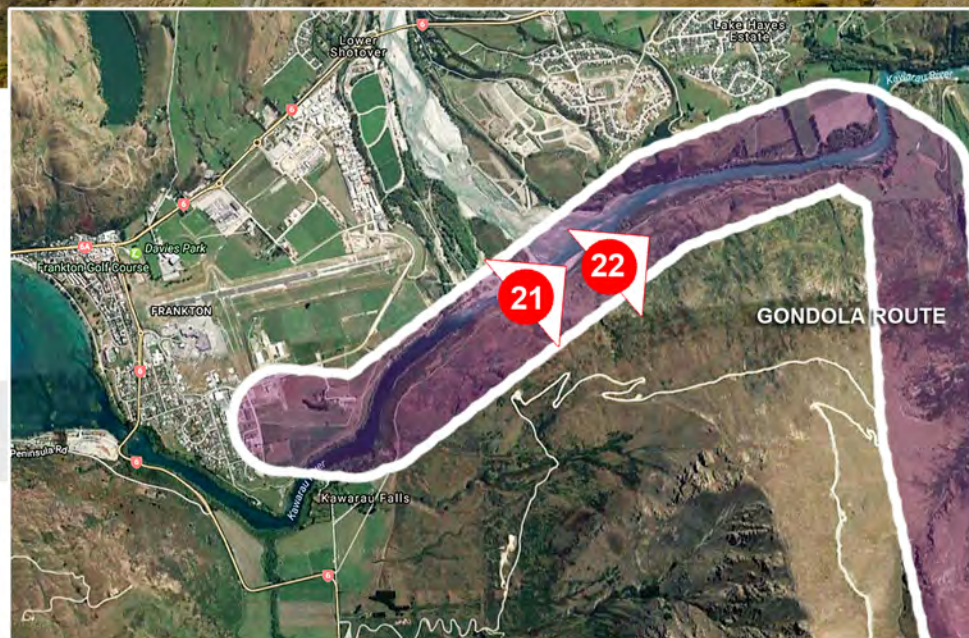


QUEENSTOWN PARK SUBMISSION

ANNEXURE B

Photo Locations 19 & 20: helicopter flight path following the proposed gondola route

June 2017

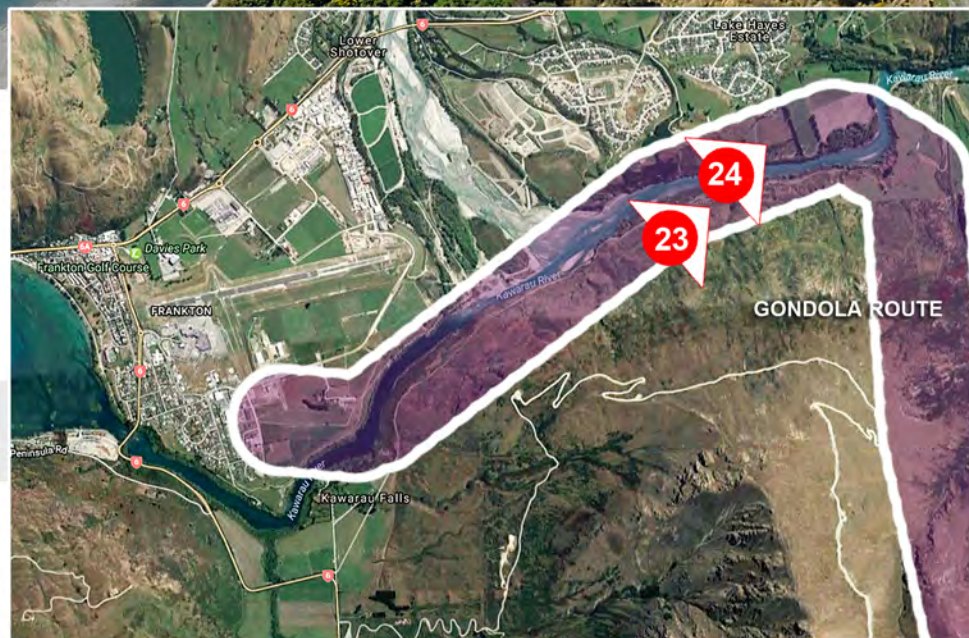


QUEENSTOWN PARK SUBMISSION

ANNEXURE B

Photo Locations 21 & 22: helicopter flight path following the proposed gondola route

June 2017

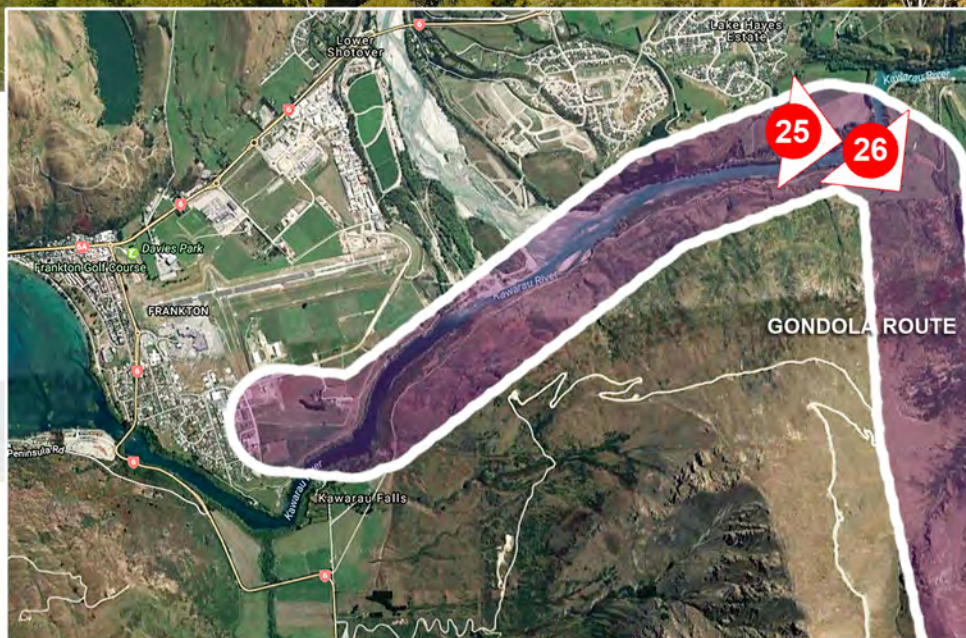


QUEENSTOWN PARK SUBMISSION

ANNEXURE B

Photo Locations 23 & 24: helicopter flight path following the proposed gondola route

June 2017

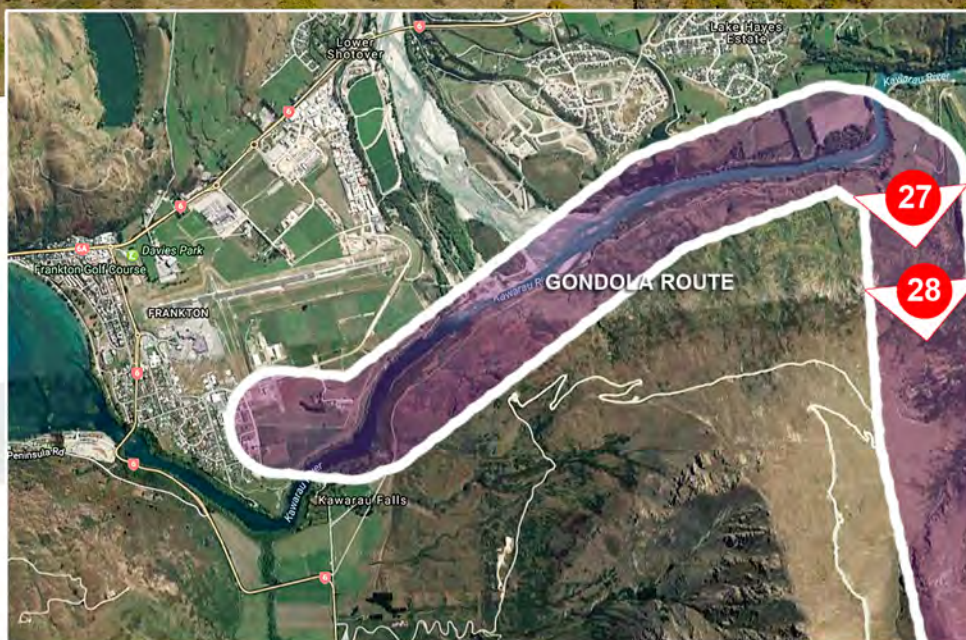
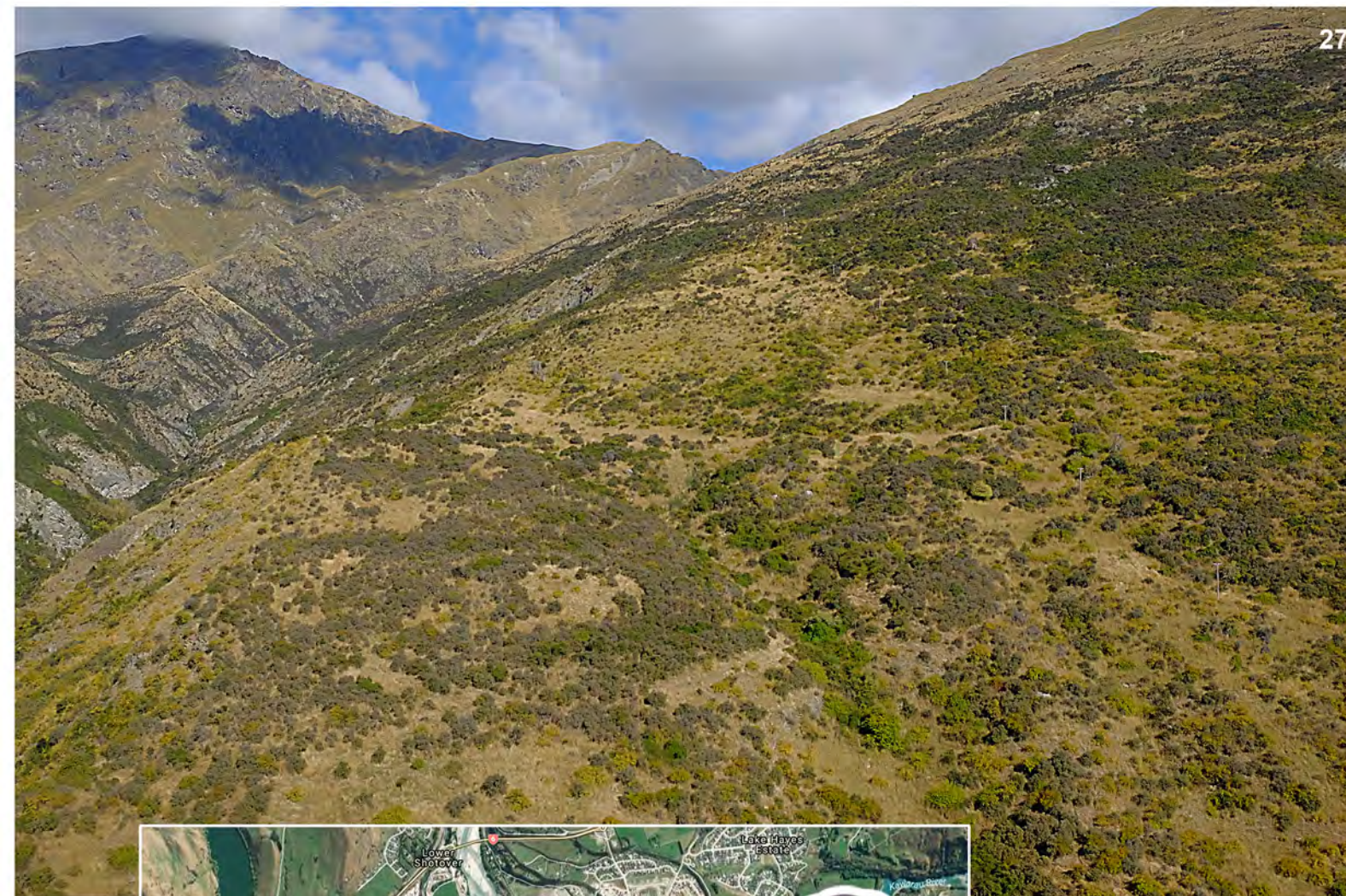


QUEENSTOWN PARK SUBMISSION

ANNEXURE B

Photo Locations 25 & 26: helicopter flight path following the proposed gondola route

June 2017



QUEENSTOWN PARK SUBMISSION

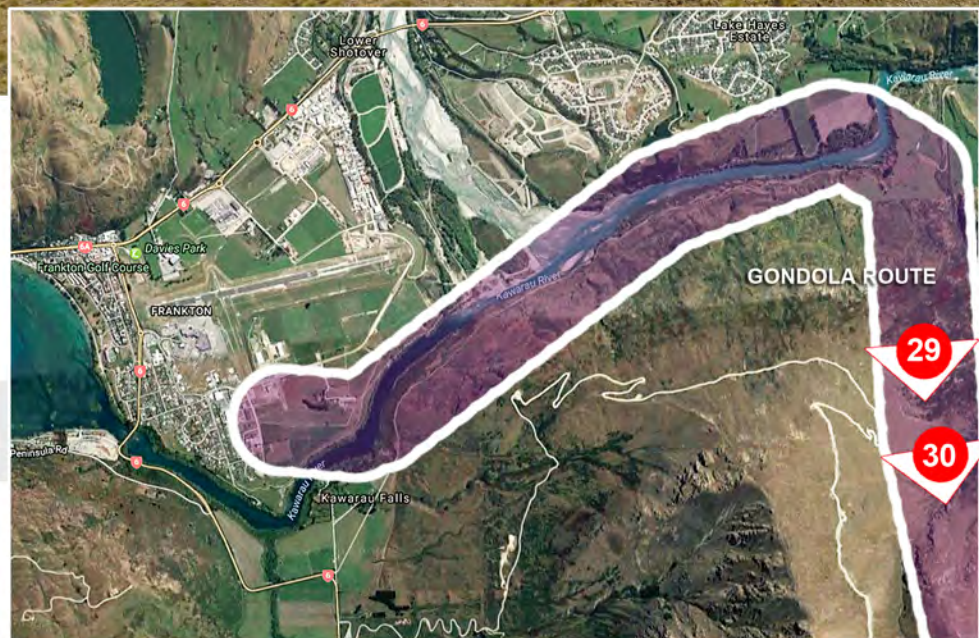
ANNEXURE B

Photo Locations 27 & 28: helicopter flight path following the proposed gondola route

June 2017

29

30

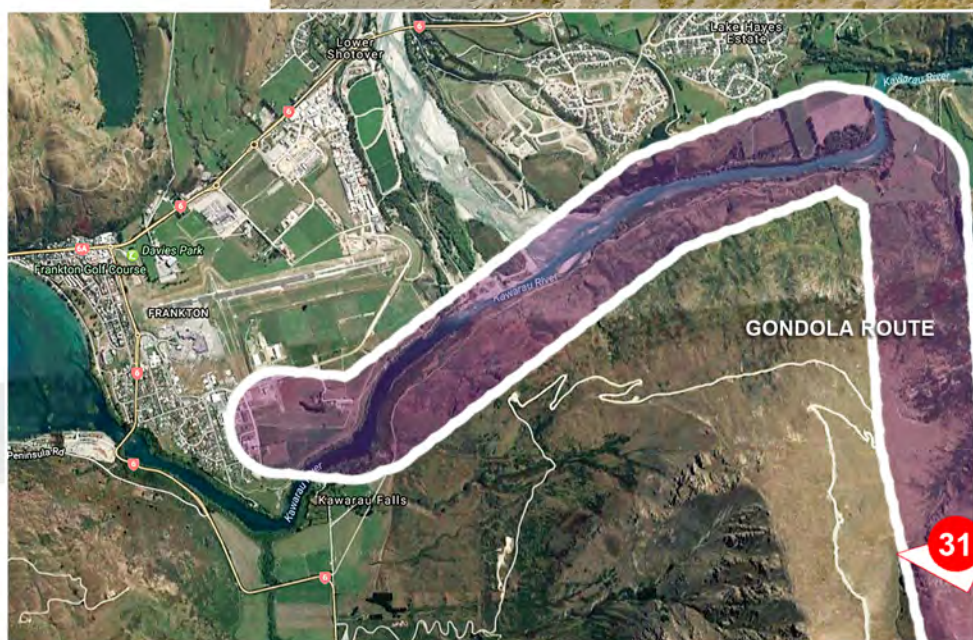


QUEENSTOWN PARK SUBMISSION

ANNEXURE B

Photo Locations 29 & 30: helicopter flight path following the proposed gondola route

June 2017

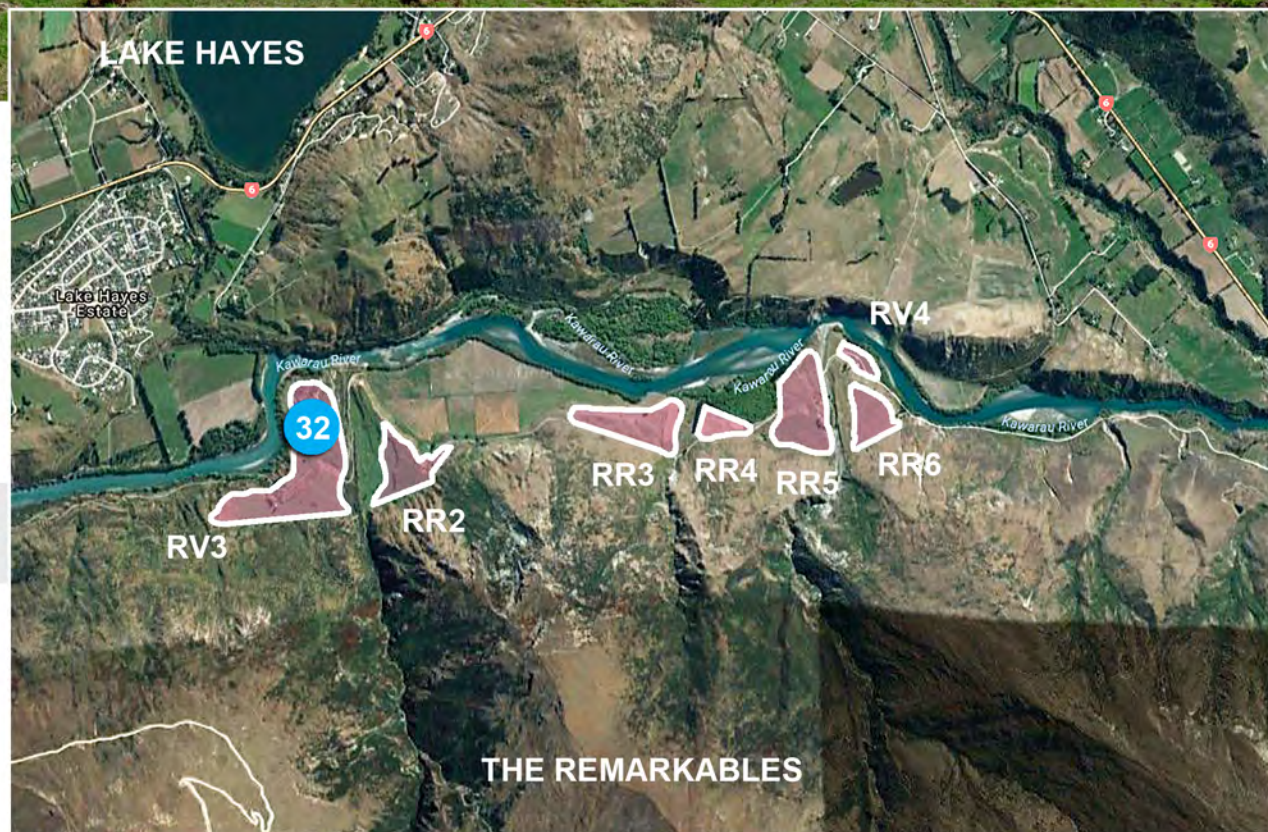


QUEENSTOWN PARK SUBMISSION

ANNEXURE B

Photo Location 31: helicopter flight path following the proposed gondola route

June 2017

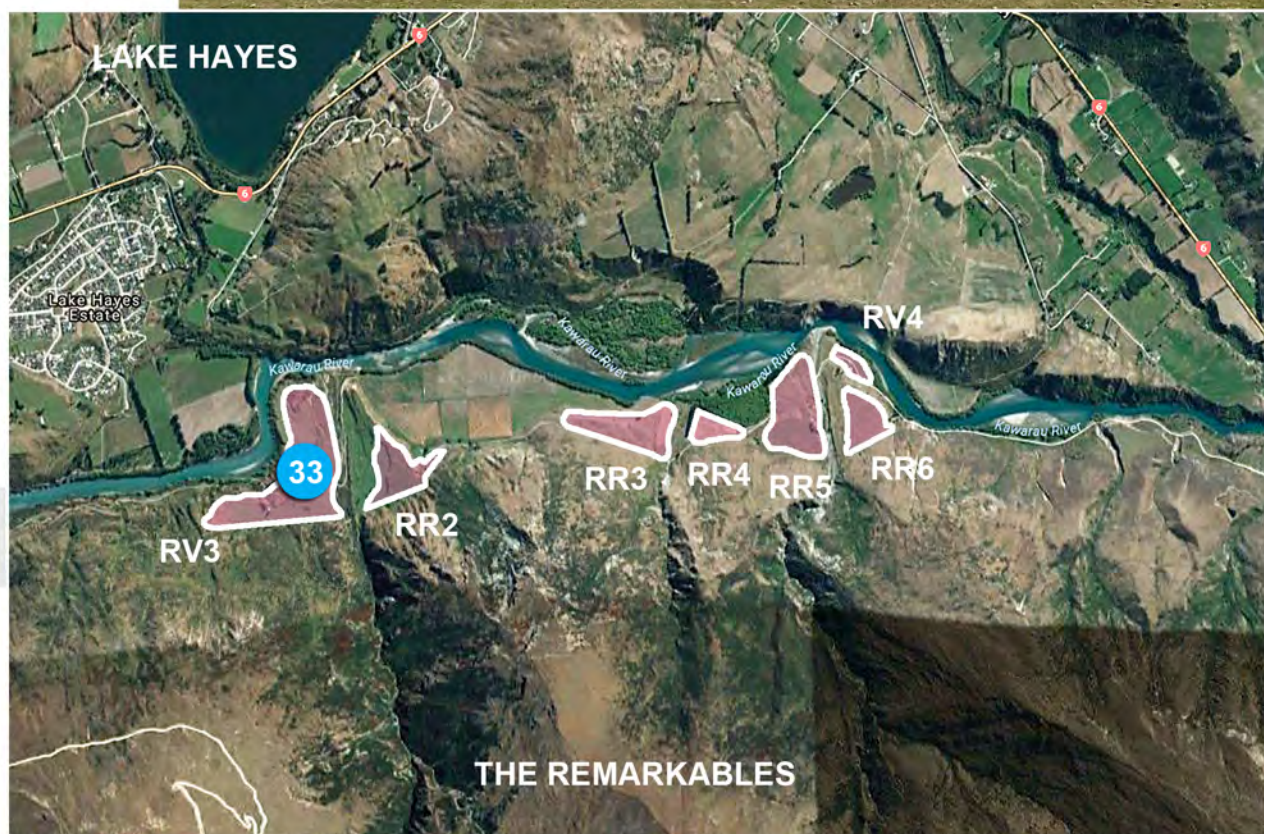


QUEENSTOWN PARK SUBMISSION

ANNEXURE C

Photo Location 32: the lower river terrace within the RV3 development area

June 2017

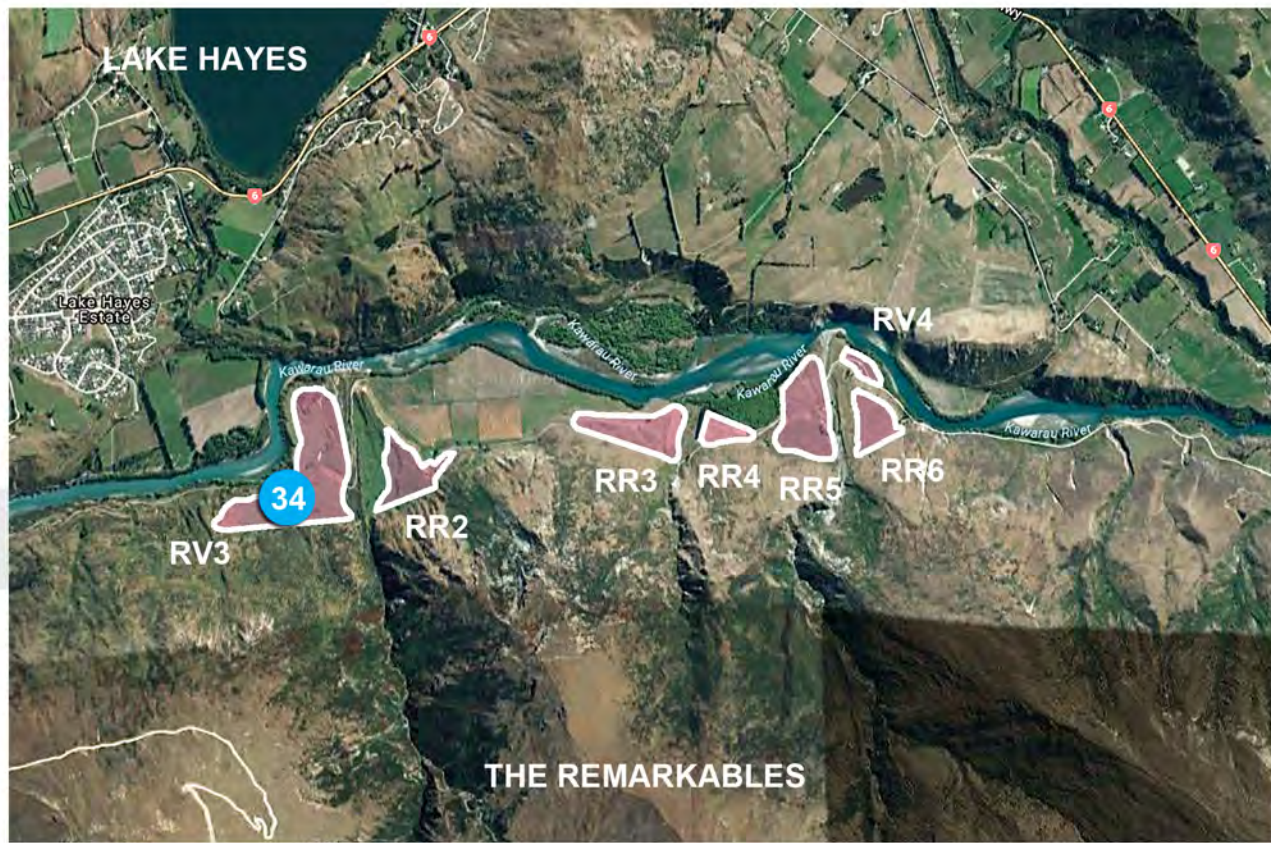


QUEENSTOWN PARK SUBMISSION

ANNEXURE C

Photo Location 33: the lower river terrace within the RV3 development area & Lake Hayes Estate

June 2017

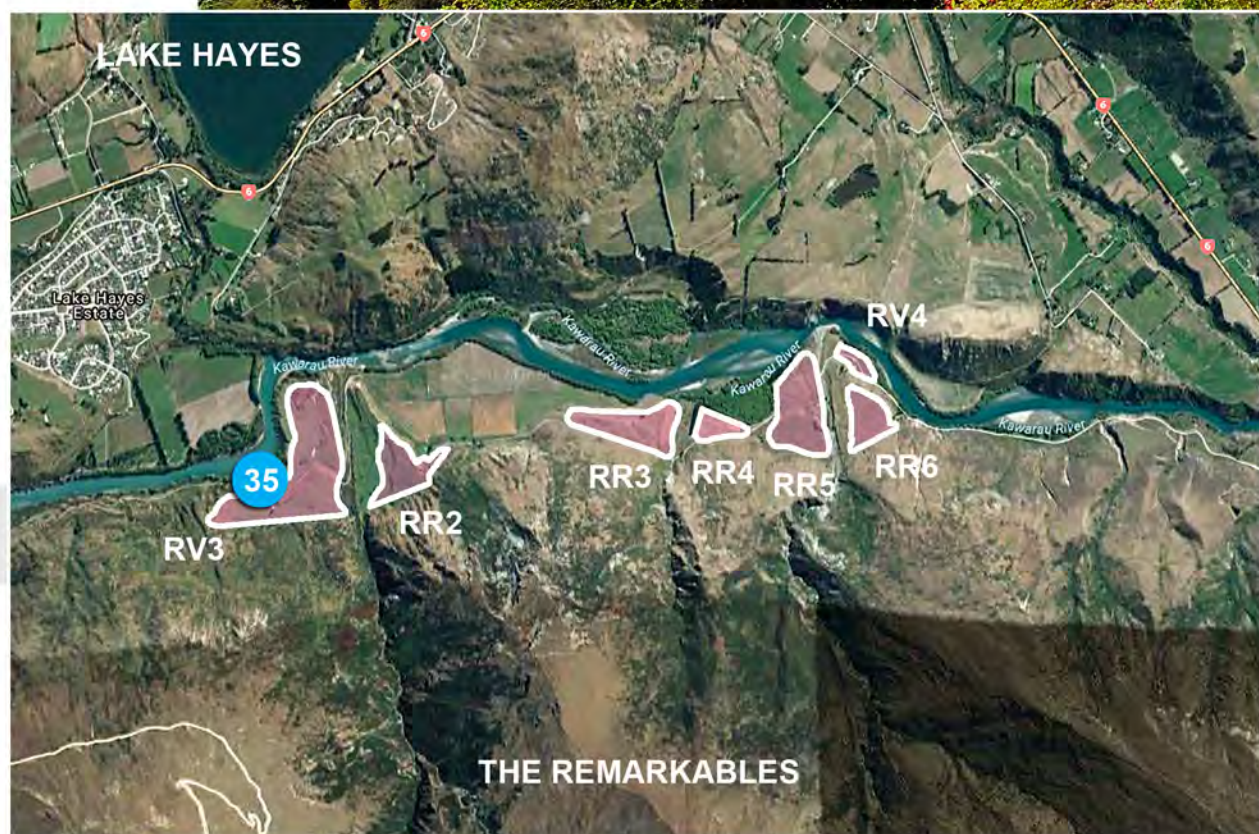


QUEENSTOWN PARK SUBMISSION

ANNEXURE C

Photo Location 34: the upper river terrace within the RV3 development area & Lake Hayes Estate

June 2017

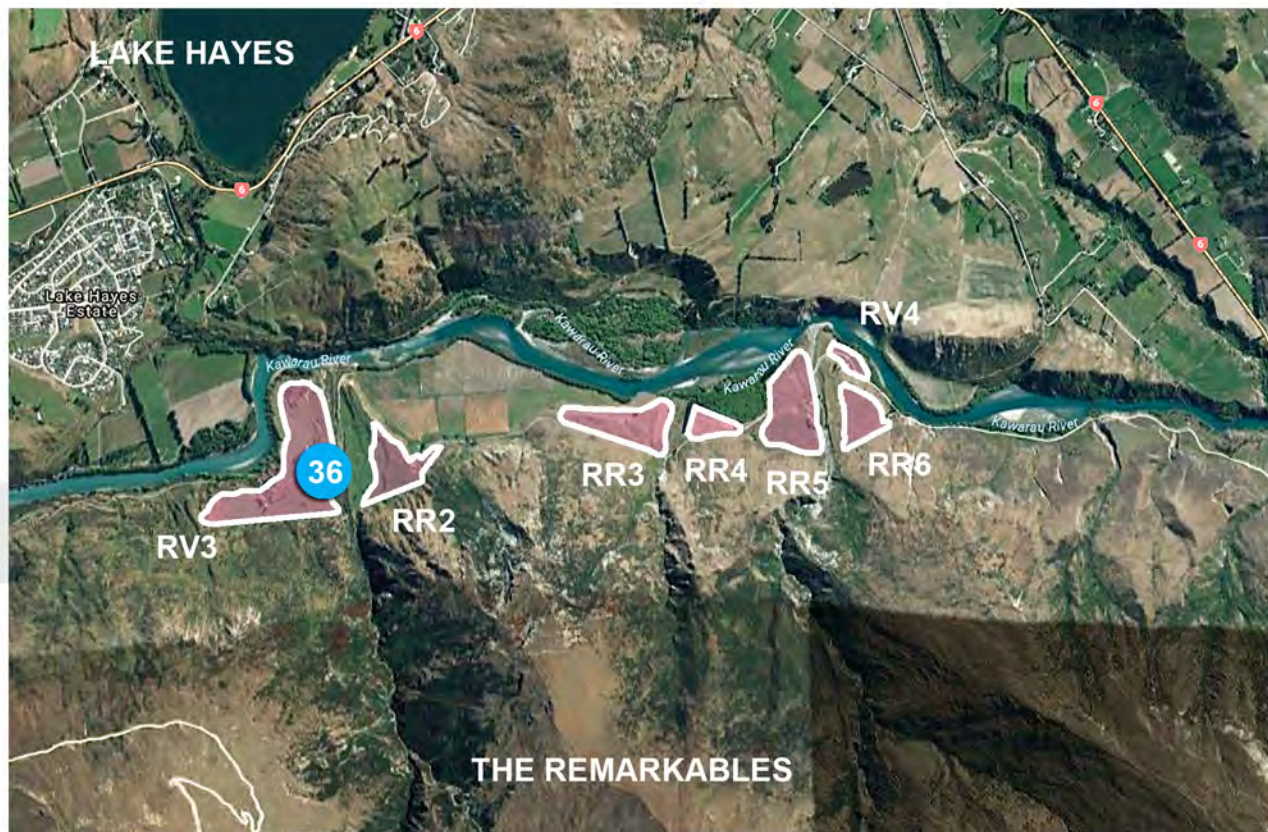


QUEENSTOWN PARK SUBMISSION

ANNEXURE C

Photo Location 35: the escarpment between RV3's upper and lower terraces

June 2017

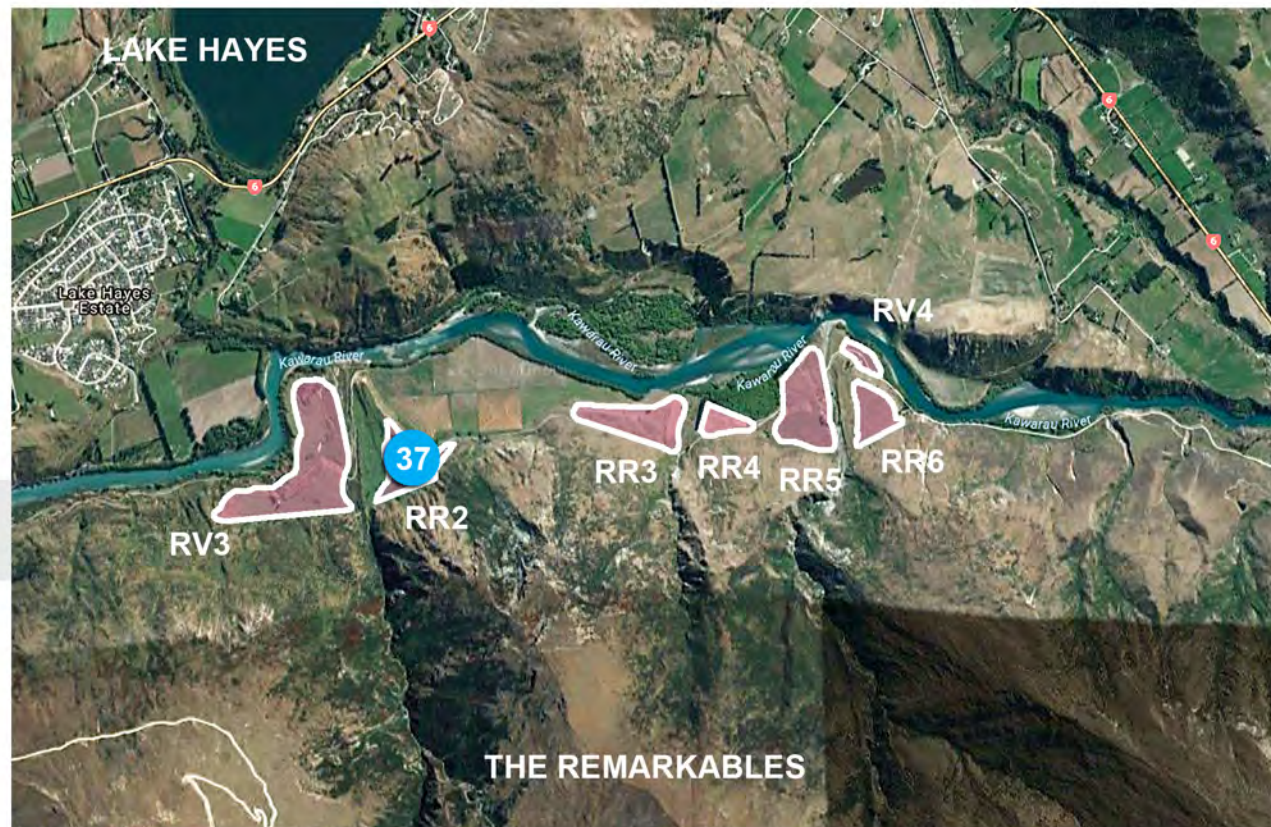


QUEENSTOWN PARK SUBMISSION

ANNEXURE C

Photo Location 36: looking across the Rastus Burn towards the western edge of the RR2 area

June 2017

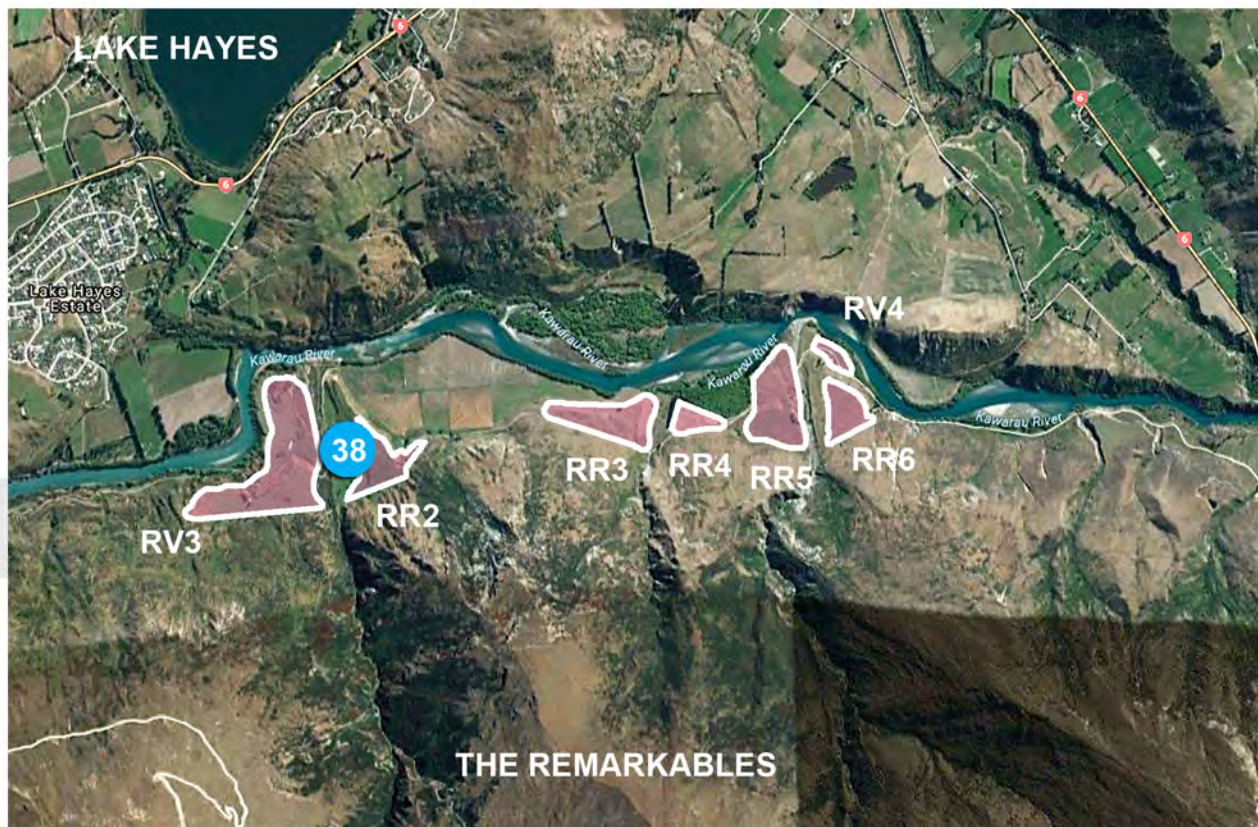


QUEENSTOWN PARK SUBMISSION

ANNEXURE C

Photo Location 37: the elevated river terrace of the RR2 development area

June 2017

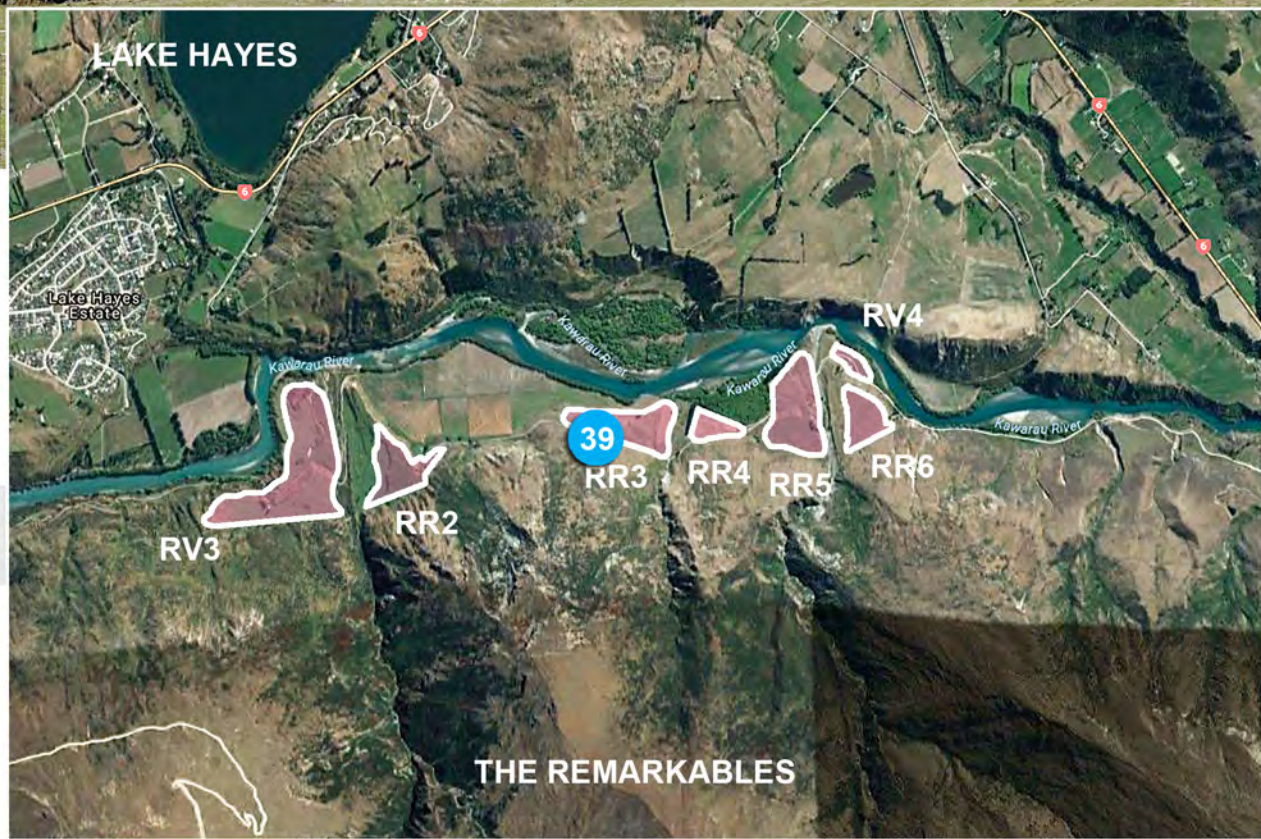


QUEENSTOWN PARK SUBMISSION

ANNEXURE C

Photo Location 38: the elevated river terrace of the RR2 development area near the Rastus Burn

June 2017

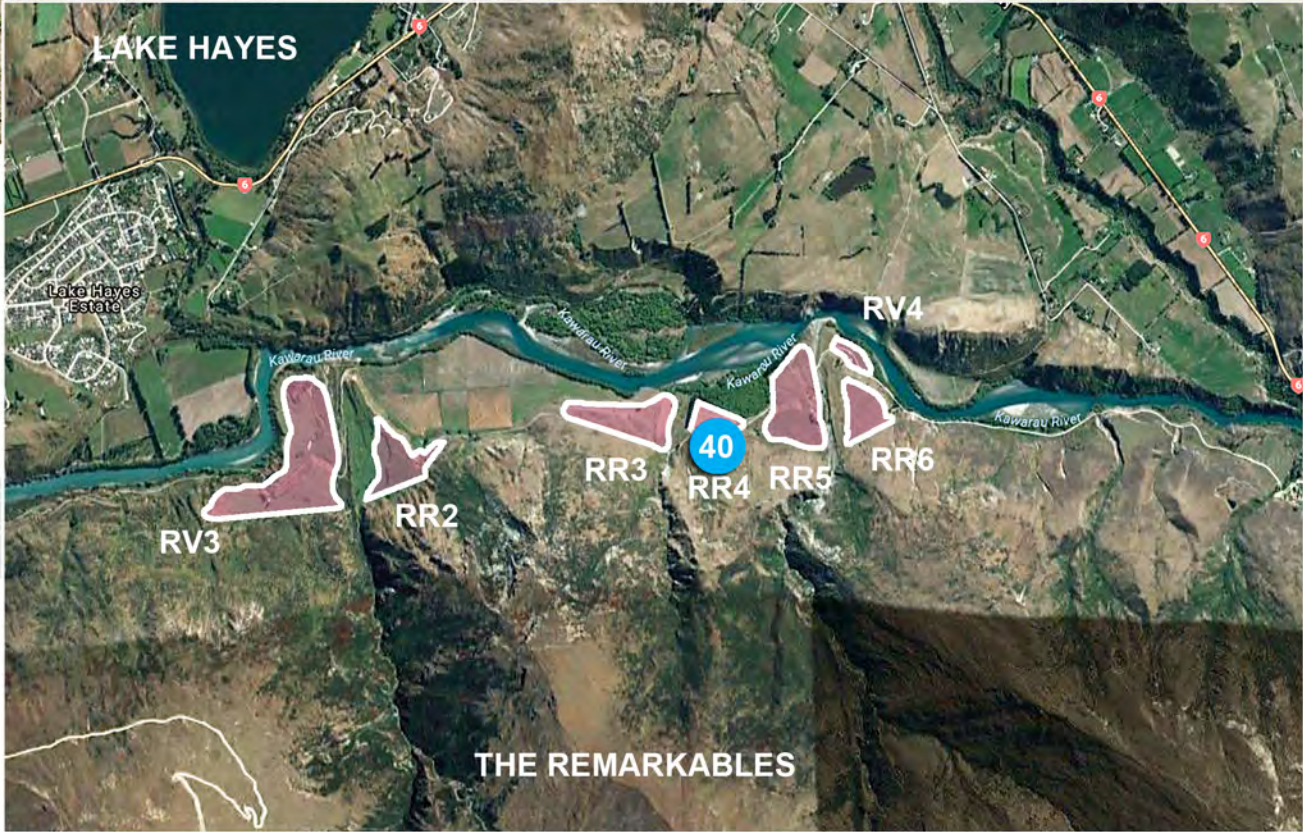


QUEENSTOWN PARK SUBMISSION

ANNEXURE C

Photo Location 39: proposed development area RR3 above the Kawarau River

June 2017

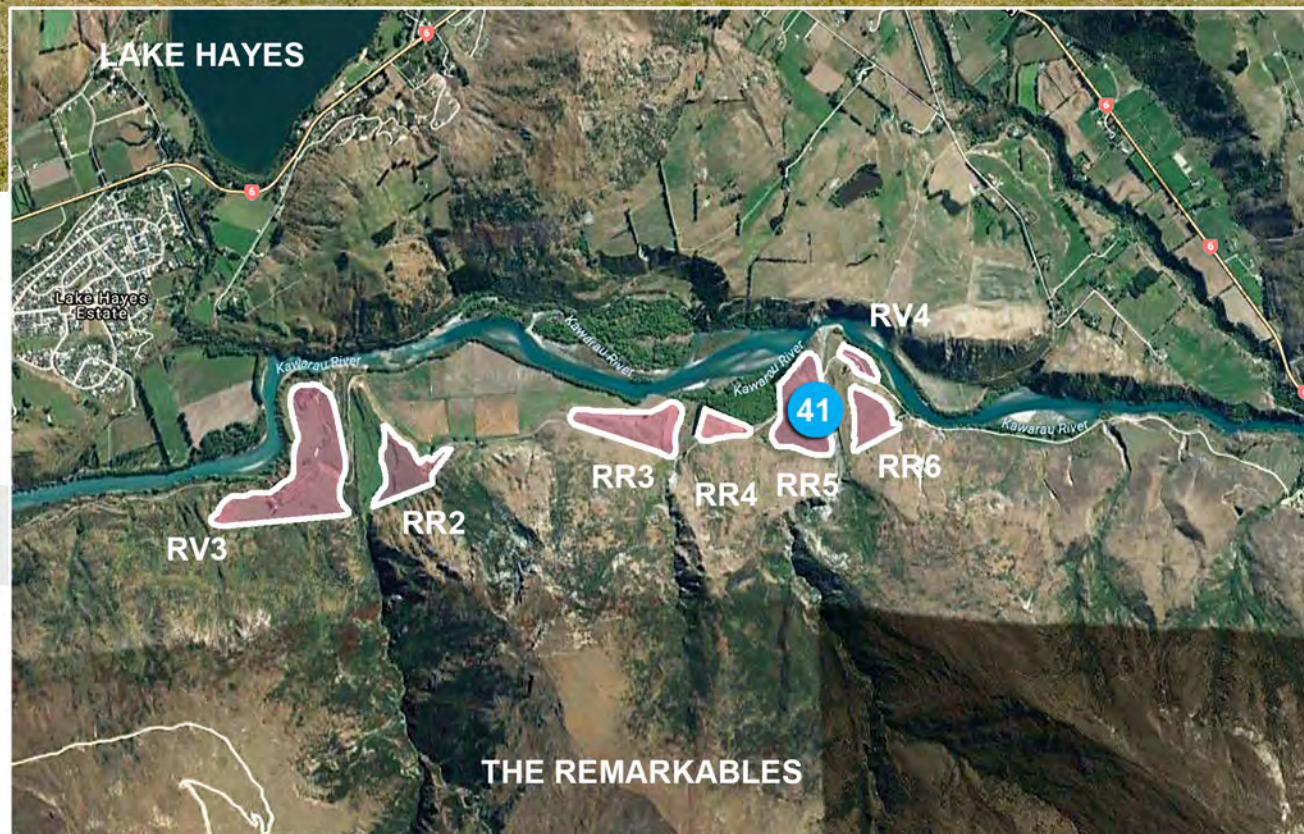


QUEENSTOWN PARK SUBMISSION

ANNEXURE C

Photo Location 40: the low terrace of proposed development area RR4 near the Kawarau River

June 2017

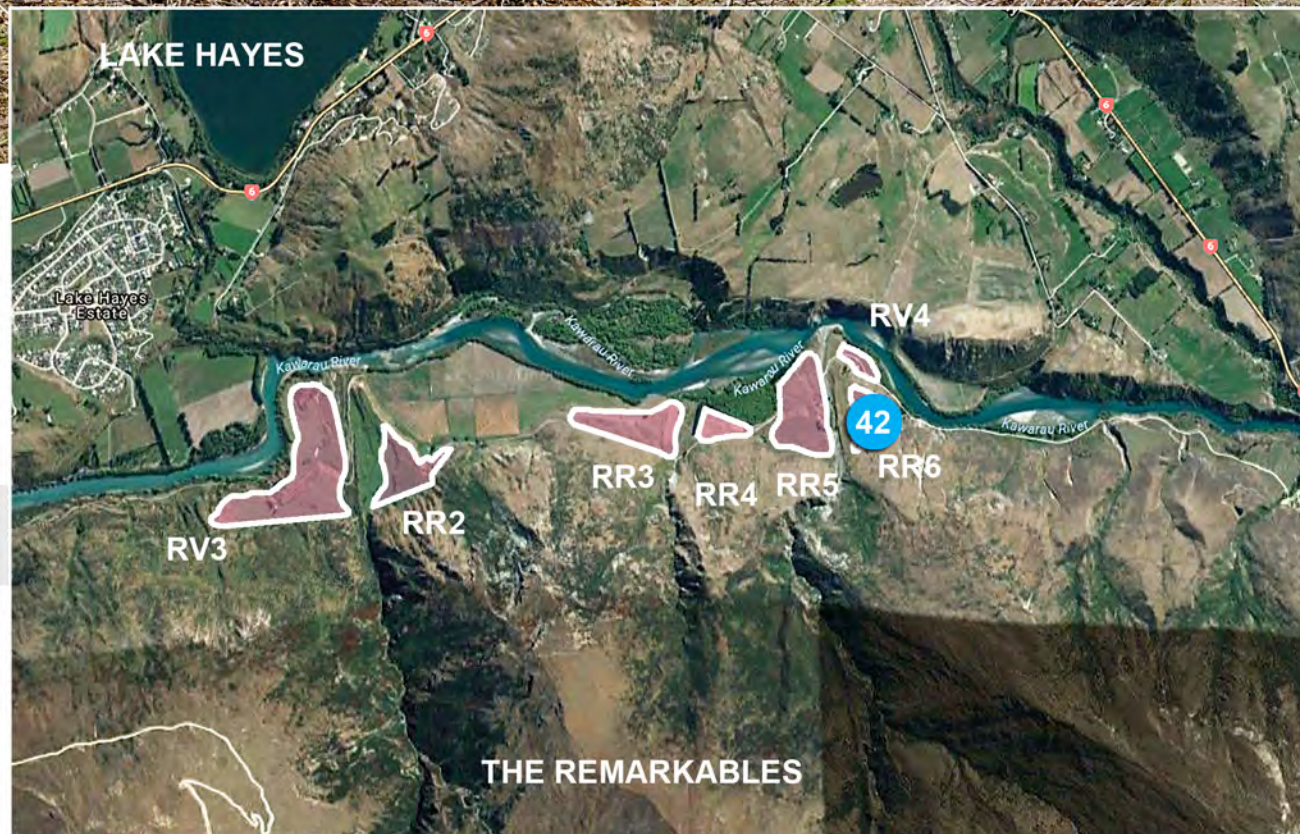


QUEENSTOWN PARK SUBMISSION

ANNEXURE C

Photo Location 41: the river terrace of proposed development area RR5 west of Owens Creek

June 2017

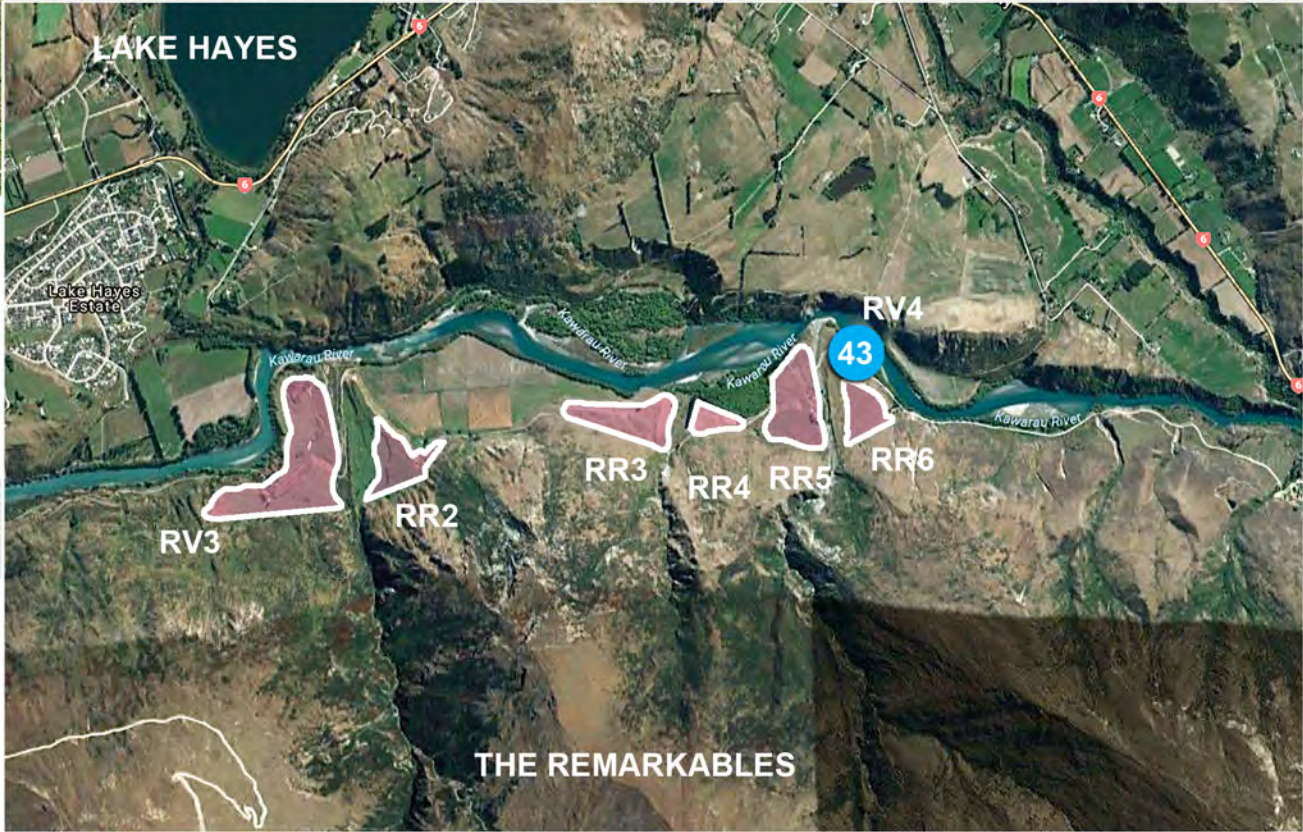


QUEENSTOWN PARK SUBMISSION

ANNEXURE C

Photo Location 42: the river terrace of proposed development area RR6 east of Owens Creek

June 2017



QUEENSTOWN PARK SUBMISSION

ANNEXURE C

Photo Location 43: the low-lying river terrace of development area RV4 next to the Kāwharau River

June 2017