





Remarkables Station  
Catchment

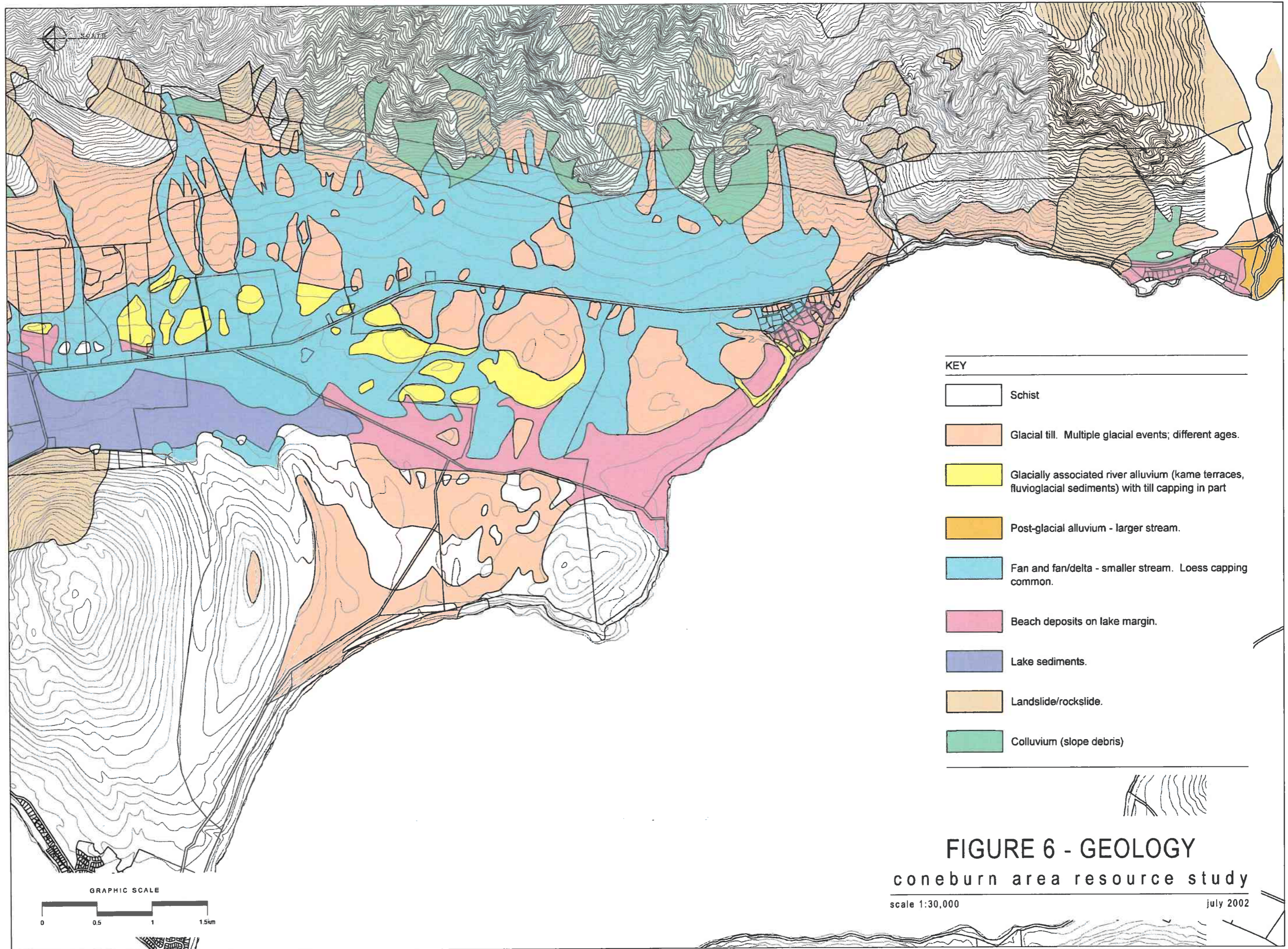
Henley Downs  
Catchment

Lake Catchment

KEY	
Study Area Boundary	
Cadastral Boundaries	
Ephemeral Streams	
Catchment Boundaries	

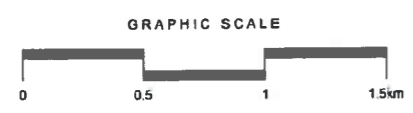
**FIGURE 5 - HYDROLOGY  
AND OVERLAND FLOW PATHS**  
coneburn area resource study  
scale 1:30,000  
July 2002

GRAPHIC SCALE  
0 0.5 1 1.5km

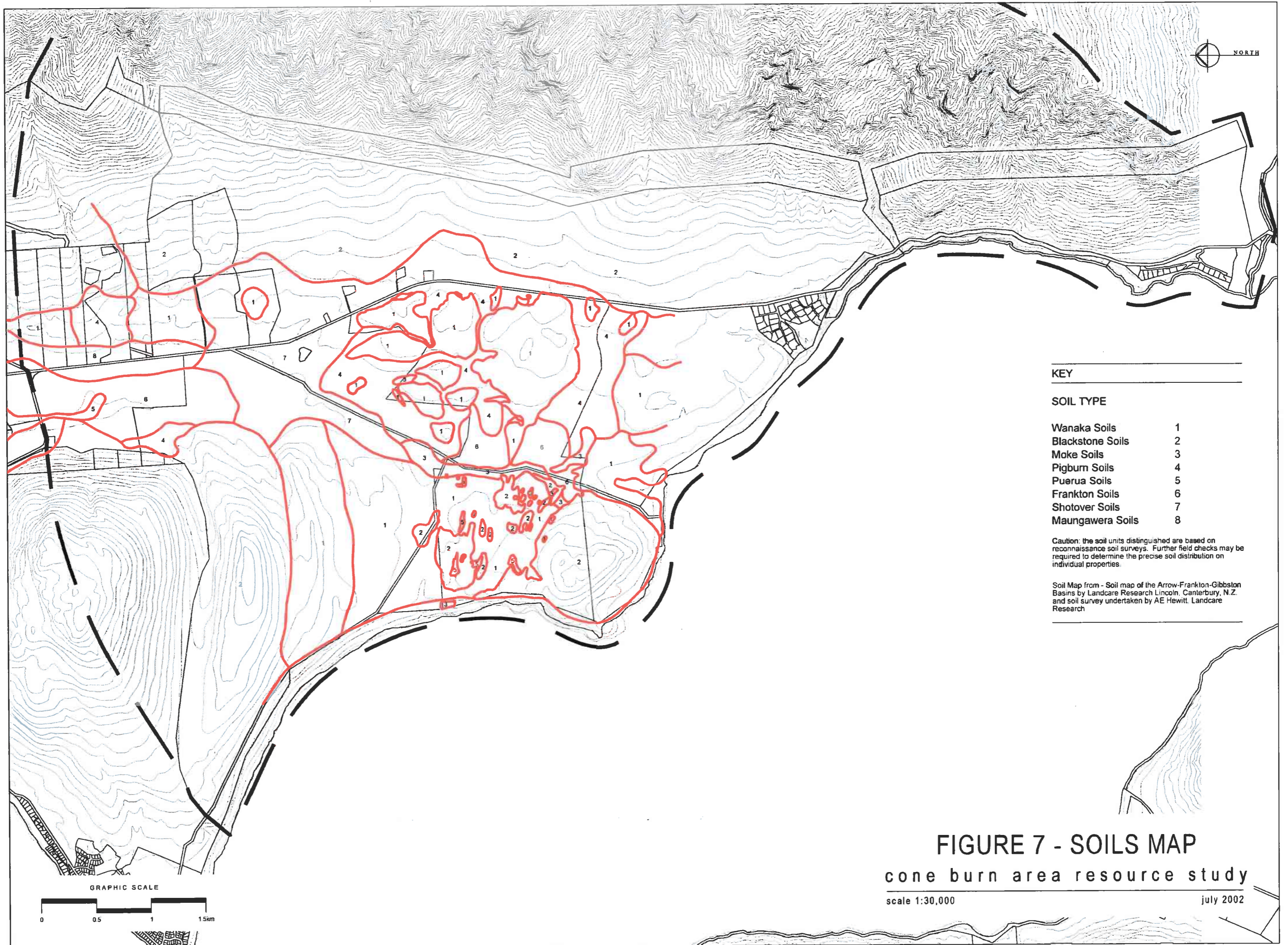


KEY

- Schist
- Glacial till. Multiple glacial events; different ages.
- Glacially associated river alluvium (kame terraces, fluvio-glacial sediments) with till capping in part
- Post-glacial alluvium - larger stream.
- Fan and fan/delta - smaller stream. Loess capping common.
- Beach deposits on lake margin.
- Lake sediments.
- Landslide/rockslide.
- Colluvium (slope debris)



**FIGURE 6 - GEOLOGY**  
 coneburn area resource study  
 scale 1:30,000      july 2002



**KEY**

**SOIL TYPE**

Wanaka Soils	1
Blackstone Soils	2
Moke Soils	3
Pigburn Soils	4
Puerua Soils	5
Frankton Soils	6
Shotover Soils	7
Maungawera Soils	8

Caution: the soil units distinguished are based on reconnaissance soil surveys. Further field checks may be required to determine the precise soil distribution on individual properties.

Soil Map from - Soil map of the Arrow-Frankton-Gibston Basins by Landcare Research Lincoln, Canterbury, N.Z. and soil survey undertaken by AE Hewitt, Landcare Research

**FIGURE 7 - SOILS MAP**  
 cone burn area resource study

scale 1:30,000

july 2002

GRAPHIC SCALE



